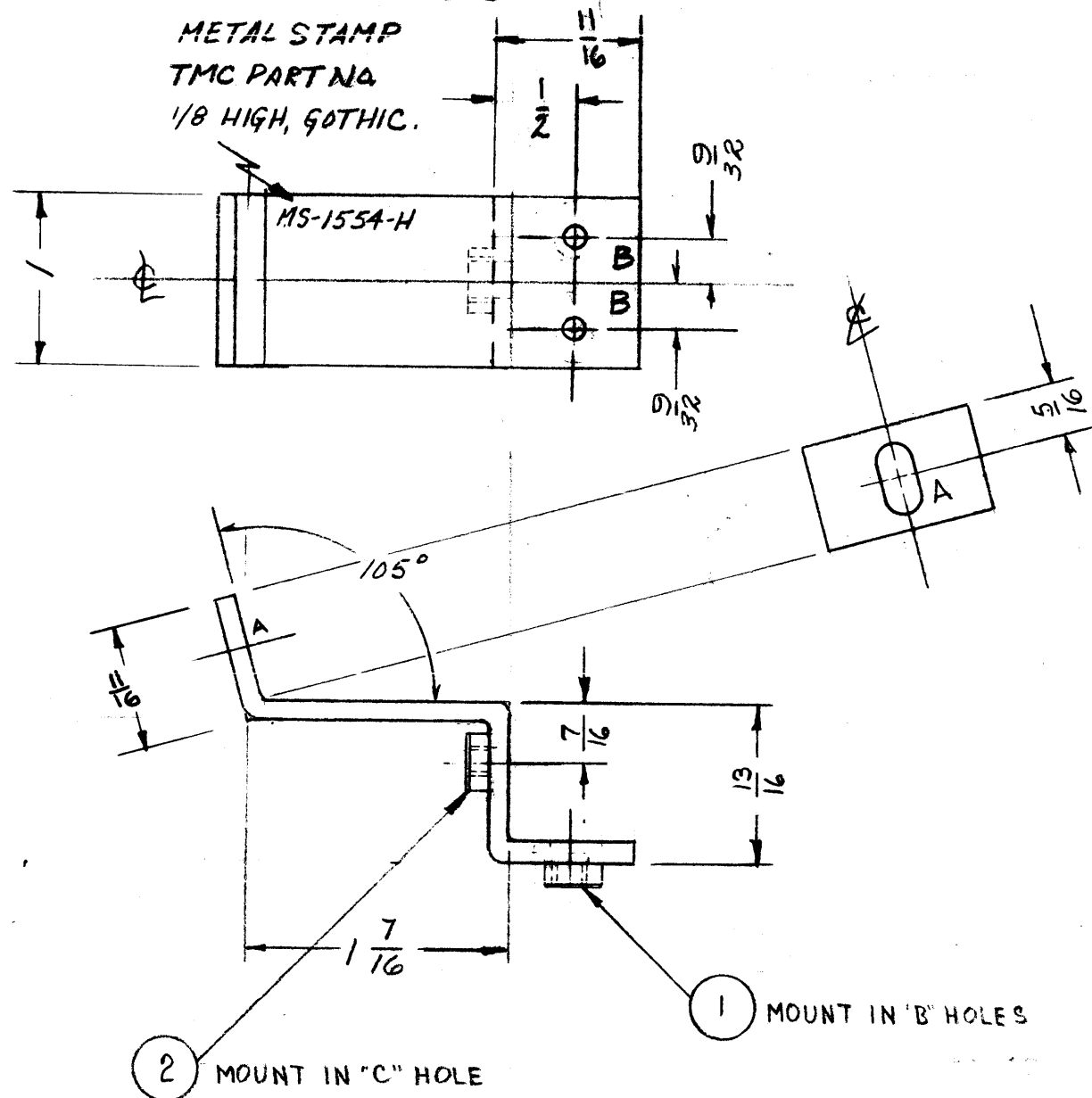
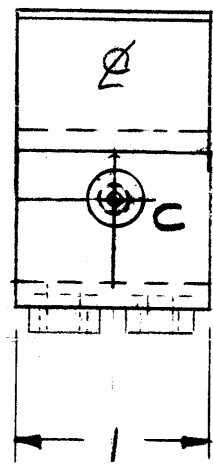


MS-1554 H



METAL STAMP  
TMC PART NO  
1/8 HIGH, GOTHIC.

A- $\frac{13}{64} \times \frac{13}{32}$  SLOT 1 Req  
B- $\frac{.191}{.194}$  D. For NT-129-632-4 2 Req  
C- $\frac{.221}{.224}$  D. For NT-129-832-4 1 Req



NOTICE TO PERSONS RECEIVING THIS DRAWING

THE TECHNICAL MATERIEL CORPORATION claims proprietary right in the material disclosed hereon. This drawing is issued in confidence for engineering information only and may not be reproduced or used to manufacture anything shown hereon without permission from THE TECHNICAL MATERIEL CORPORATION to the user. This drawing is loaned for mutual assistance and is subject to recall at any time.

Property of:  
THE TECHNICAL MATERIEL CORPORATION  
MAMARONECK, NEW YORK

H	1	A'SLOT WAS $\frac{13}{64}$ D. HOLE	11-8-62	7630	GR	JL	JL
G	2	C HOLE WAS C. SINK FOR SM-107-33 (8-32)	8-22-60	2831	RL	JCS	JL
F	1	B HOLE WAS C. SINK FOR SM-107-33 (8-32)					
F	3	DIM. $\frac{1}{8}$ DELETED					
F	2	DIM. $\frac{7}{16}$ ADDED	2-26-60	1871	MF	JL	JL
F	1	DIM. $\frac{13}{16}$ ADDED					
E	2	"C" HOLE WAS .221-.224 FOR NT-129-832-4	2-4-60	1823	MF	JL	JL
E	1	"B" HOLE WAS .191-.194 FOR NT-129-632-4					
D	1	GPT-40K ADDED	1-27-60	-	MF	JL	JL
C	1	S-404 WAS S-101	12/15/59	1001	MS	JL	EMN
B		NT-129's were SM-107's HOLE CHECK'D	12/10/59	1649	JL	JL	JL
A	1	REDIMENSIONED	" 25 59	1595	JL	JL	JL

3	AT-101	GPT-40K	1-27-60
3	AM-109	GPT-40K	1-27-60
2	AX-107	GPT-10K	2-18-59
3	AX-173	GPT-10K	2-18-59
REQ. PER UNIT	MODEL	PROJECT NO.	A BY. NO.
			DATE

1	2	NT-129-832-4	NUT ROUND SWAGE	C
2	1	NT-129-632-4	NUT ROUND SWAGE	B
REQ. ITEM		PART NO.	DESCRIPTION	SYMBOL
		.064	THE TECHNICAL MATERIEL CORP.	
		STOCK SIZE	MAMARONECK, NEW YORK	
		ALUMINUM	SUPPORT PANEL BOTTOM	
		MATERIAL		
		5052-H32		
		TYPE & TEMPER	HEAT TREAT. PEG.	DRAWN
		S-404 YELLOW IRIDIFE		FINAL APPR.
		5114 ZINC CHROMATE		
		2115 THE GRAY		
		FINISH & SPEC. NO.		
				MS-1554 H