

IF IT IS FOUND DESIRABLE TO CHANGE ANY TOLERANCE OR OTHER DETAIL SPECIFIED ON THIS DRAWING NOTIFY THE PURCHASER PROMPTLY.

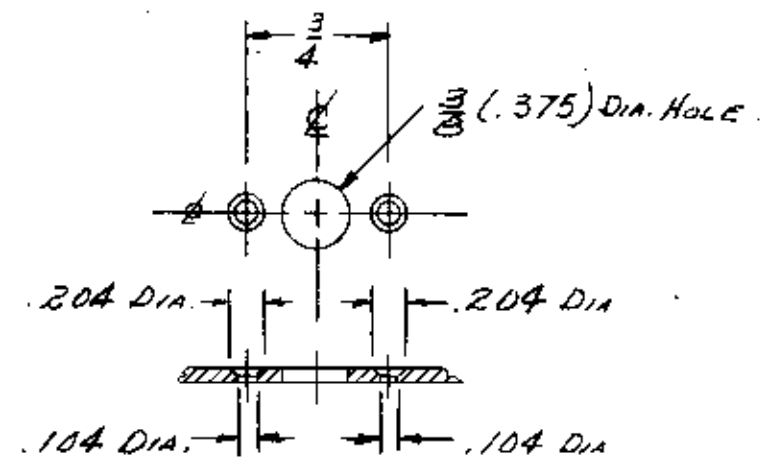
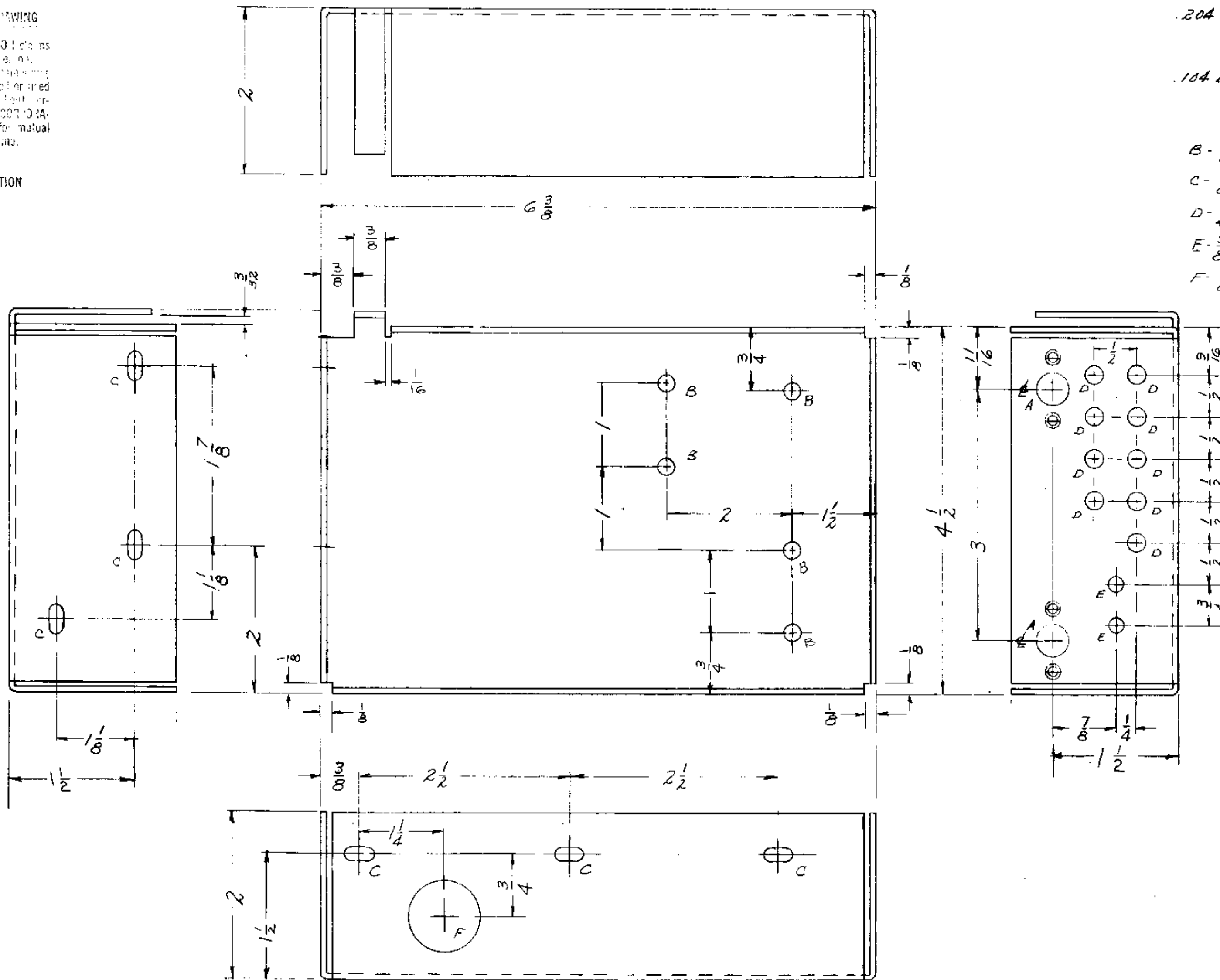
MAXIMUM ALLOWABLE TOLERANCES HAVE BEEN DETERMINED AND DEVIATIONS WILL BE CAUSE FOR REJECTION. REMOVE ALL BURRS AND SHARP EDGES.

NOTICE TO PERSONS RECEIVING THIS DRAWING

THE TECHNICAL MATERIEL CORPORATION claims proprietary right in the information contained herein. This drawing is issued in confidence for manufacturing information only and may not be copied or used to manufacture any item shown hereon without permission from THE TECHNICAL MATERIEL CORPORATION to the user. This drawing is loaned for mutual assistance and is subject to recall at any time.

Property of:

THE TECHNICAL MATERIEL CORPORATION
MAMARONECK, NEW YORK



- DRILLING "A"**
- B - $\frac{3}{16}$ (.187) DIA. HOLE - 5 REQ.
 - C - $\frac{13}{64} \times \frac{13}{32}$ SLOT - 6 REQ.
 - D - $\frac{1}{4}$ (.250) DIA. HOLE - 9 REQ.
 - E - $\frac{3}{8}$ (.375) DIA. HOLE - 2 REQ.
 - F - $\frac{7}{8}$ (.875) DIA. HOLE - 1 REQ.

MS-1545 **D**

| ISSUE | ITEM | CHANGED FROM | DATE | CH. NO. | DRAFTER | CHECKER | ENG. APP. |
|-------|------|--|---------|---------|---------|-------------|-------------|
| D | 1 | TOP LIP CUTOUT DECREASED FR 5/8 TO 3/8 | 3-19-45 | 13641 | RL | SP | [Signature] |
| C | 1 | ØB HOLE ADDED | 7-25-61 | 6907 | SP | SP | [Signature] |
| B | 2 | DELETED 1 "D" HOLE ADDED NEW DIM. | 7-10-59 | 282 | Rid | [Signature] | [Signature] |
| A | 1 | ADDED 2 "B" HOLES | 4/1/59 | | RL | [Signature] | [Signature] |

| TOLERANCES | | SCALE: |
|------------|----------------|--------|
| ALL | DEC. DIM. ± | 1/4 |
| OTHER | FRAC. DIM. ± | |
| | ANGULAR DIM. ± | |

DRILL, PUNCH, COMMERCIAL STOCK SIZES AND MANUFACTURERS TOLERANCES ARE NOT INCLUDED.

UNLESS OTHERWISE SPECIFIED DIMENSIONS ARE IN INCHES AND INCLUDE CHEMICALLY APPLIED OR PLATED FINISHES

| | |
|----------|-----------|
| DECIMALS | FRACTIONS |
| ± .005 | ± 1/64 |
| ± .01 | ± 1/32 |
| ± .015 | ± 1/16 |

ANGLES ± 30'

SIZE HERE GUARANTEED 2-58

| | | | | |
|---------------|---------|-------------|-----------|--------------------|
| 1 | QPT-10K | AX-236, 238 | DATE | 7-59 |
| REQ. PER UNIT | MODEL | PROJECT NO. | ASSY. NO. | DATE |
| | | | | 5904 IRIDITE |
| | | | | FINISH & SPEC. NO. |

Ref. 4LD-580

| REQ. | ITEM | PART NO. | DESCRIPTION | SYMBOL |
|------|------|--------------------|------------------------------|--------|
| | | .081 THICK | THE TECHNICAL MATERIEL CORP. | |
| | | STOCK SIZE | MAMARONECK, NEW YORK | |
| | | ALUMINUM | SIDEPLATE, RIGHT SIDE | |
| | | MATERIAL | CONTROL PANEL | |
| | | 5052-H32 | | |
| | | TYPE & TEMPER | | |
| | | HEAT TREAT. SPEC. | | |
| | | FINISH & SPEC. NO. | | |

DRAWN: [Signature] ELEC. DES. APP. [Signature] MECH. DES. APP. [Signature]

CHECKED: [Signature] FINAL APPROVAL: [Signature]

MS-1545 **D**