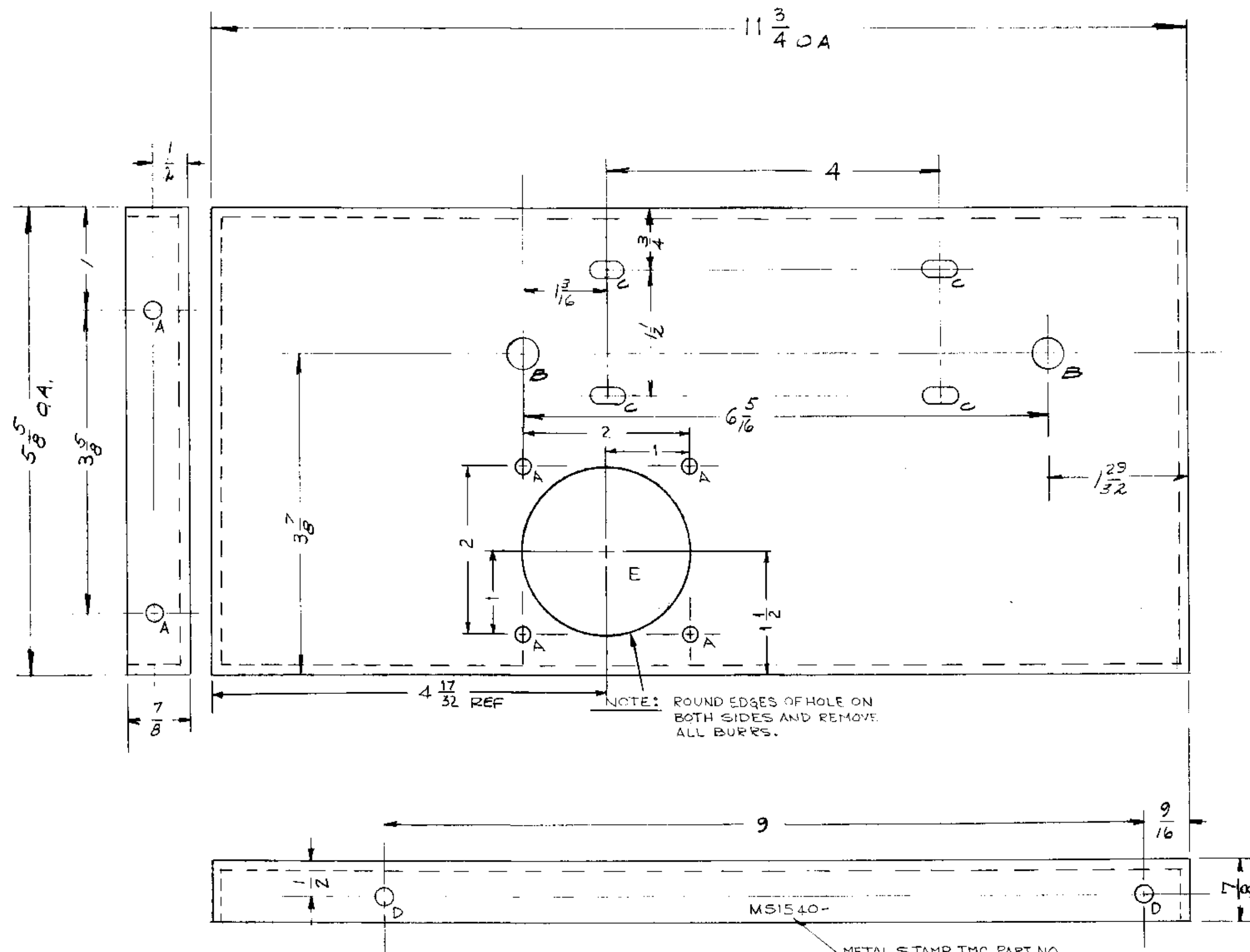


IF IT IS FOUND DESIRABLE TO CHANGE ANY TOLERANCE OR OTHER DETAIL SPECIFIED ON THIS DRAWING NOTIFY THE PURCHASER PROMPTLY.

MAXIMUM ALLOWABLE TOLERANCES HAVE BEEN DETERMINED AND DEVIATIONS WILL BE CAUSE FOR REJECTION. REMOVE ALL BURRS AND SHARP EDGES.

HOLES	REQ'D.
A - 13/64 DIA.	7
B - 7/16 DIA.	2
C - SLOTTED 13/32 x 13/64	4
D - 17/64 DIA	2
E 2 DIA	1



MS-1540 G

MS1540-

METAL STAMP TMC. PART NO 1/8 HIGH, GOTHIC, W/LATEST REV. LETTER.

ISSUE	ITEM	CHANGED FROM	DATE	CH. NO.	DRAFTS	CHECKER	ENG. APP.
G		CHG'D 'E' & 'A' HOLE LOC.	11-23-46	17312	RME		
F	1	3/4 DIA DELETED @ 'E' HOLE AND @ 'A' HOLES ADDED	6/11/47	1423	F		
E	1	NOTE ADDED	7-12-62	7325	SR		
D	1	'B' HOLE WAS 3/8 DIA	7-2-62	6861	R.T.		
C	1	on bottom view 'D' holes were 1/8" holes	7-14-61	5234	G.D.L.		
B	1	Dim 1/16 Was 9/16	6-1-61	5000	RY		
A	1	11 3/4 Dim was 10 3/4	4-2-59	1096	J.C.B.		

UNLESS OTHERWISE SPECIFIED DIMENSIONS ARE IN INCHES AND INCLUDE CHEMICALLY APPLIED OR PLATED FINISHES

DECIMALS	FRACTIONS
.1 ± .005	1/64
.2 ± .01	ANGLES
.3 ± .005	± 0° 30'

REQ. PER UNIT	MODEL	PROJECT NO.	ASSY. NO.	DATE
1	DDT-13K	AT-100		1-30-59

REQ. ITEM	PART NO.	DESCRIPTION	SYMBOL
1/8 THICK		THE TECHNICAL MATERIEL CORP. MAMARONECK, NEW YORK	
ALUMINUM		LEFT SIDE PLATE	
5052-H32		ANT. TUNER	
TYPE & TEMPER		DRAWN	ELEC. DES. APP.
		CHECKED	FINAL APPROVAL
HEAT TREAT. SPEC.			
1EIDITE			
FINISH & SPEC. NO.			