

IF IT IS FOUND DESIRABLE TO CHANGE ANY TOLERANCE OR OTHER DETAIL SPECIFIED ON THIS DRAWING NOTIFY THE PURCHASER PROMPTLY.

MAXIMUM ALLOWABLE TOLERANCES HAVE BEEN DETERMINED AND DEVIATIONS WILL BE CAUSE FOR REJECTION. REMOVE ALL BURRS AND SHARP EDGES.

A -  $\frac{9}{16}$  (.562) D. HOLE

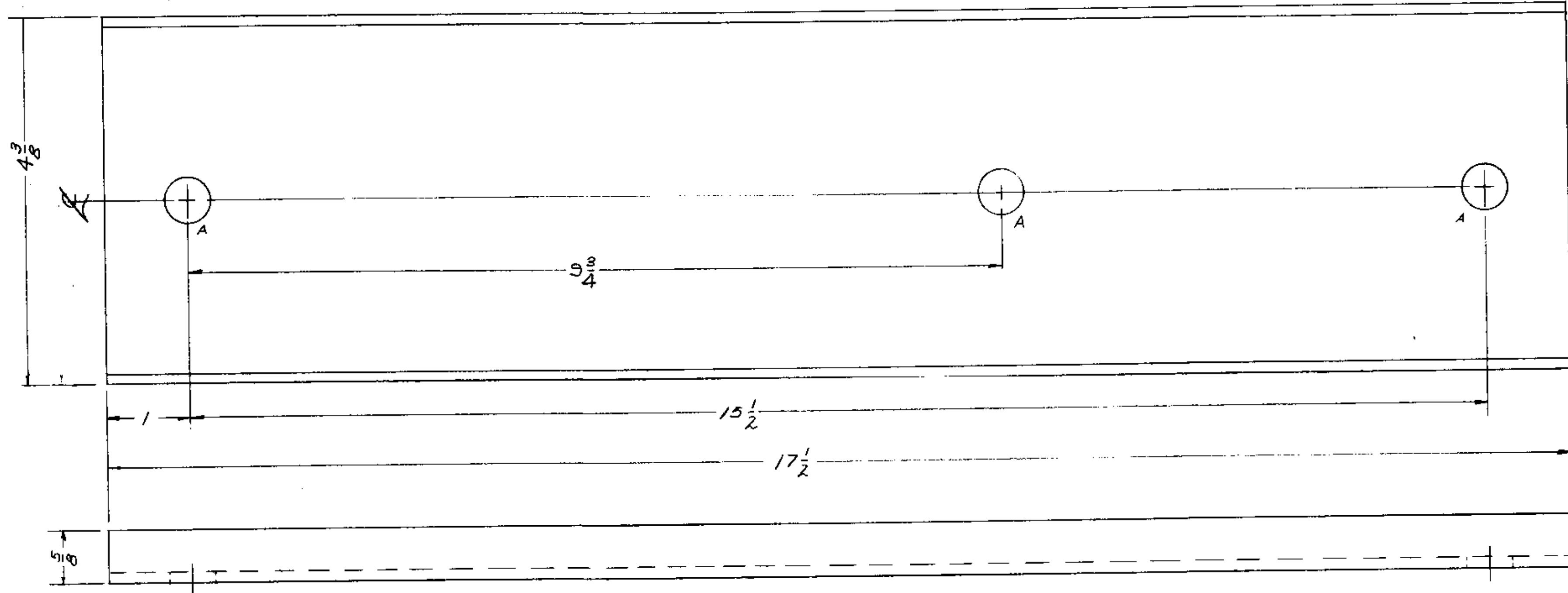
3 REQ.

**NOTICE TO PERSONS RECEIVING THIS DRAWING**

THE TECHNICAL MATERIEL CORPORATION claims proprietary right in the material disclosed hereon. This drawing is issued in confidence for engineering information only and may not be reproduced or used to manufacture anything shown hereon without permission from THE TECHNICAL MATERIEL CORPORATION to the user. This drawing is loaned for mutual assistance and is subject to recall at any time.

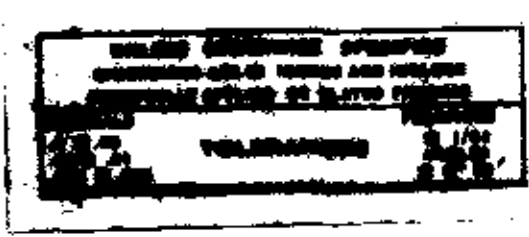
Property of:

THE TECHNICAL MATERIEL CORPORATION  
MAMARONECK, NEW YORK



MS-1522

ISSUE	ITEM	CHANGED FROM	DATE	CH. NO.	DRAFTS	CHECKER	ENG. APP.
TOLERANCES		SCALE: <i>1/16</i>					
ALL	DEC. DIM. ±	DRILL, PUNCH, COMMERCIAL STOCK					
OTHERS	FRAC. DIM. ± $\frac{1}{64}$	SIZES AND MANUFACTURERS					
	ANGULAR DIM. ±	TOLERANCES ARE NOT INCLUDED.					



REQ. PER UNIT	MODEL	PROJECT NO.	ASBY. NO.	DATE
	GPT-10KW	TS DECK		4-7-59
USED ON				

REQ.	ITEM	PART NO.	DESCRIPTION	SYMBOL
		1/8 THICK	THE TECHNICAL MATERIEL CORP.	
		STOCK SIZE	MAMARONECK, NEW YORK	
		ALUMINUM	CAPACITOR, MOUNTING PLATE	
		MATERIAL	WEIGHT PER PC.	
		5052-H32		
		TYPE & TEMPER.	DRAWN	ELEC. DES. APP.
		HEAT TREAT. SPEC.	CHECKED	FINAL APPROVAL
		3404 IRRIDITE		MS-1522
		FINISH & SPEC. NO.		