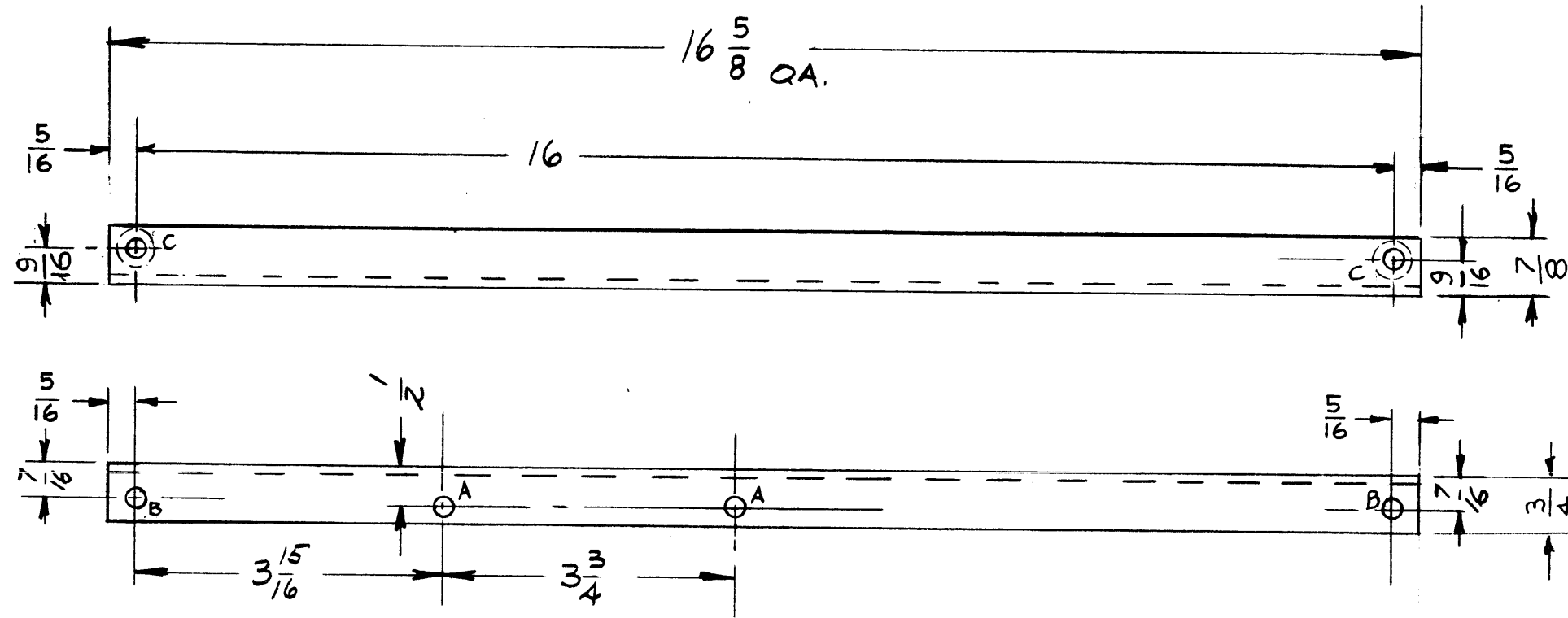


MS-1511 C



- A - $\frac{13}{64}$ DIA. HOLES _____ 2 REQ'D.
- B - $\frac{17}{64}$ DIA. _____ 2 REQ'D.
- C - Dr. & C'SINK FOR 10-32 FHS _____ 2 REQ'D.

NOTICE TO PERSONS RECEIVING THIS DRAWING

THE TECHNICAL MATERIEL CORPORATION claims proprietary right in the material disclosed hereon. This drawing is issued in confidence for engineering information only and may not be reproduced or used to manufacture anything shown hereon without permission from THE TECHNICAL MATERIEL CORPORATION to the user. This drawing is loaned for mutual assistance and is subject to recall at any time.

Property of:
 THE TECHNICAL MATERIEL CORPORATION
 MAMARONECK, NEW YORK

C	2	5/16 DIMS. WERE 3/8	19/31/61	5782	L6	RD	QCB
	1	16-5/8 DIM. WAS 16-3/4					
B	2	⊙ C Holes were B Holes	7-10-61	5234	G.D.L.	QCB	QCB
	1	B Holes were 15/64 DIA.					
A	2	⊙ B Holes were A Holes	6-1-61	5000	RD	QCB	QCB
	1	Dim 9/16 Was 7/16 - 7/8 Was 3/4					
ISSUE	ITEM	CHANGED FROM	DATE	CH. NO.	DRAFTS	CHECKER	ENG. APP.
TOLERANCES			SCALE:				
DEC. DIM. ±			MAXIMUM ALLOWABLE TOLERANCES HAVE BEEN DETERMINED AND ANY DEVIATIONS WILL BE CAUSE FOR REJECTION.				
FRAC. DIM. ± 1/64			REMOVE ALL BURRS AND SHARP EDGES				
ANGULAR DIM. ±							

1	GPT-10K	AT-100	1-30-59
REQ. PER UNIT	MODEL	PROJECT NO.	DATE
USED ON			

REQ. ITEM	PART NO.	DESCRIPTION	SYMBOL
		1/8 THICK STOCK SIZE	
		ALUMINUM	
		MATERIAL	
		5052-H32	
		TYPE & TEMPER	
		HEAT TREAT. SPEC.	
		DRAWN	
		CHECKED	
		FINAL APPROVAL	
		IRIDITE	
		FINISH & SPEC. NO.	
		ELEC. DES. APP.	
		MECH. DES. APP.	
		MS-1511	C