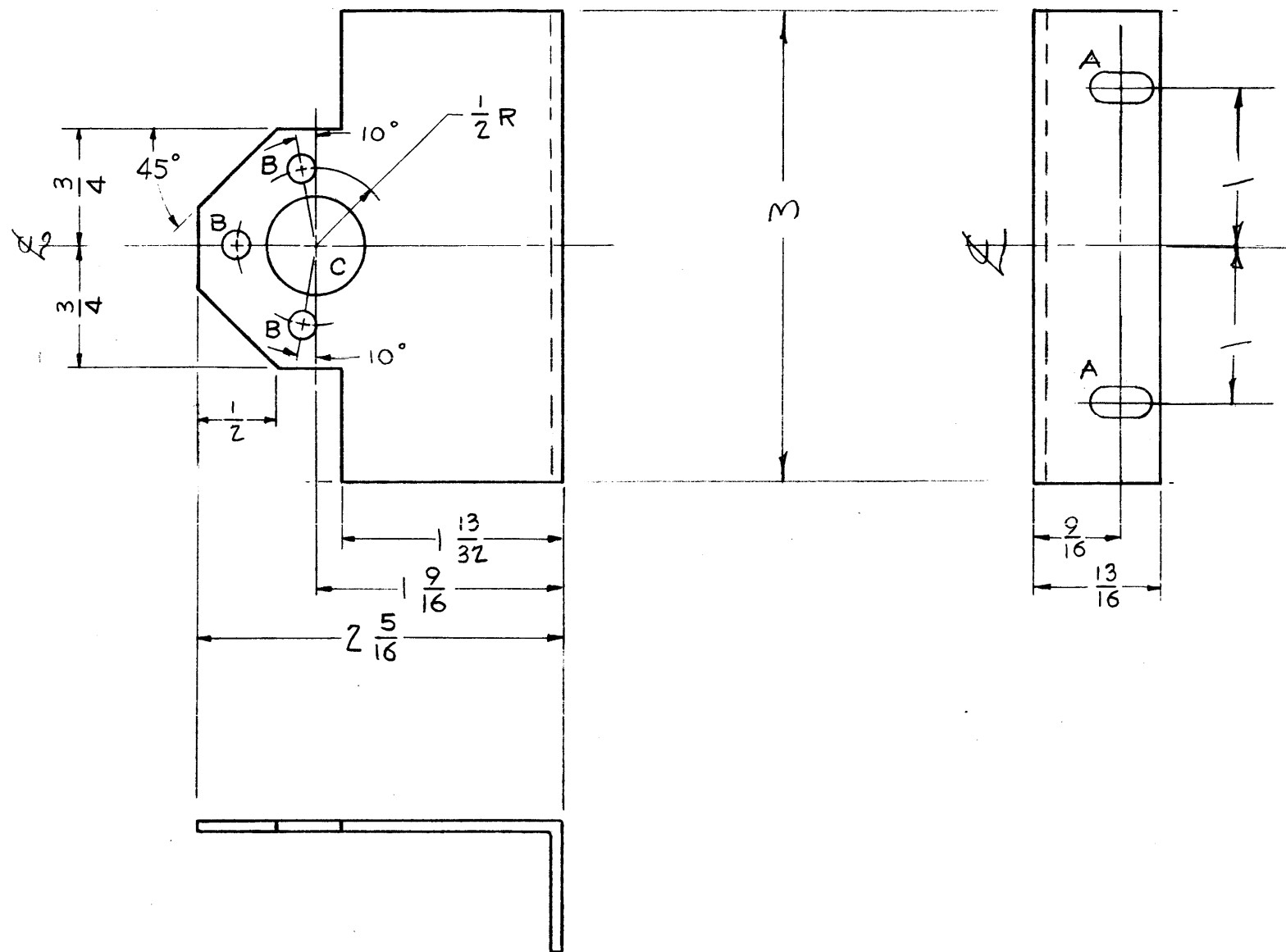


MS-1402 C



HOLE LEGEND
 A - 13/64 x 13/32 2 SLOTS REQ.
 B - 11/64 (.171) DIA. 3 HOLES "
 C - 5/8 (.625) DIA. 1 HOLE "

NOTICE TO PERSONS RECEIVING THIS DRAWING
 THE TECHNICAL MATERIEL CORPORATION claims proprietary right in the material disclosed hereon. This drawing is issued in confidence for engineering information only and may not be reproduced or used to manufacture anything shown hereon without permission from THE TECHNICAL MATERIEL CORPORATION to the user. This drawing is loaned for mutual assistance and is subject to recall at any time.
 Property of:
 THE TECHNICAL MATERIEL CORPORATION
 MAMARONECK, NEW YORK

ISSUE	ITEM	CHANGED FROM	DATE	CH. N.	DRAFTS	CHECKER	ENG. APP.
C	1	S-404 WAS S-101	12/15/59	1001	AB		EMN
B	1	No. Req. was 3	4/16/59	2	J.C.B.	KB	AK
A	1	"A" Hole was 5/32 x 5/16 Rot. 90° 1" to "A" Hole was 1-1/2" (ERROR)	11/17/58	1	KB	AK	AK

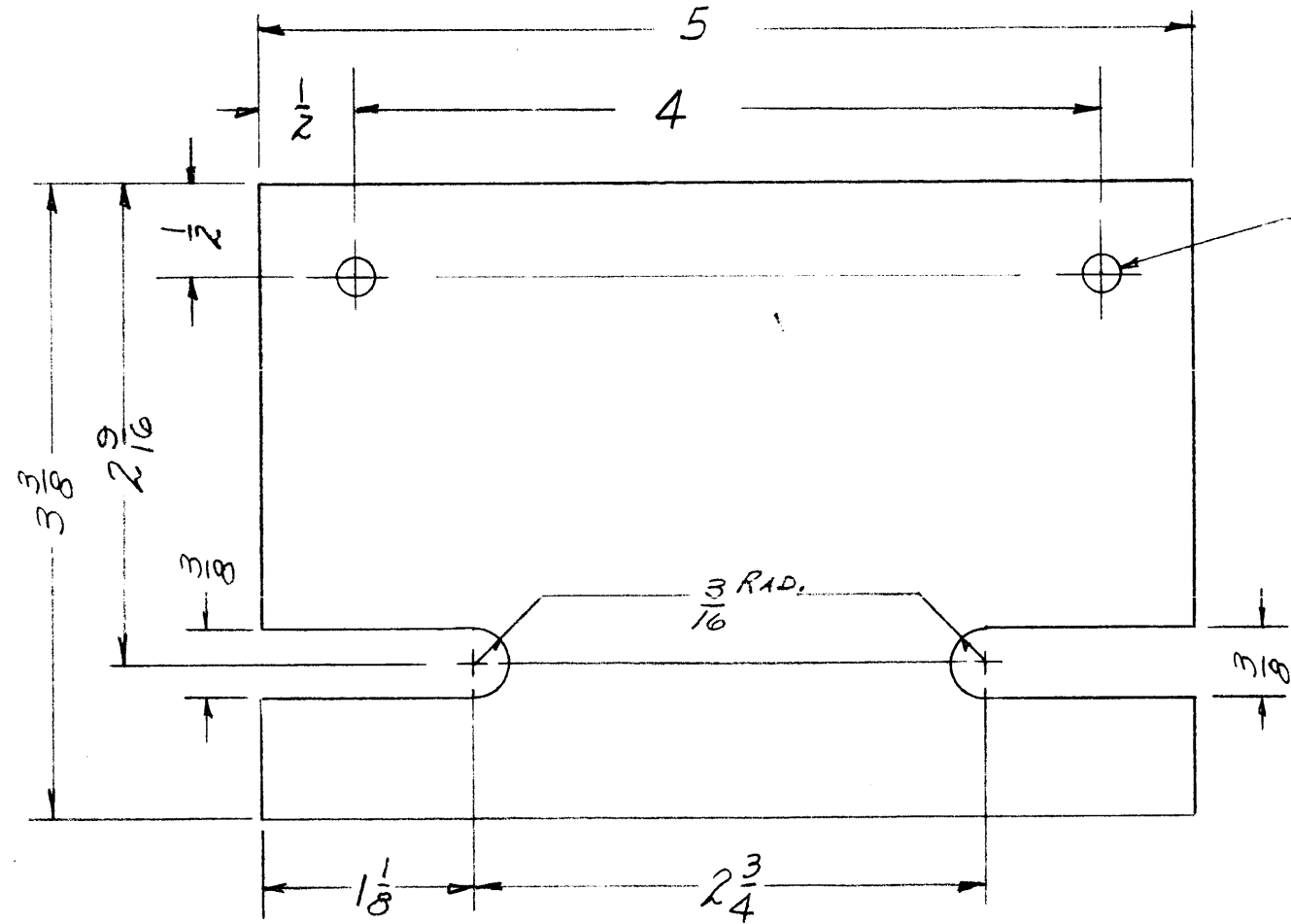
TOLERANCE: DEC. DIM. ±, FRAC. DIM. ± 1/64, ANGULAR DIM. ±

SCALE: MAXIMUM ALLOWABLE TOLERANCE HAVE BEEN DETERMINED AND ANY DEVIATIONS WILL BE CAUSE FOR REJECTION: REMOVE ALL BURRS AND SHARP EDGES

2	RTF-2	Pow/AMP	11-3-58
REQ. PER UNIT	MODEL	PROJECT NO.	DATE
USED ON			

REQ.	ITEM	PART NO.	DESCRIPTION	SYMBOL
		.064	THE TECHNICAL MATERIEL CORP.	
		STOCK SIZE	MAMARONECK, NEW YORK	
		ALUMINUM	BRACKET, CONDENSER	
MATERIAL				
		5052 H32	J.C. BIELE	
		TYPE & TEMPER	DRAWN	CHECKED
		S-404 YELLOW IRIDITE		FINAL APPROVAL
		FINISH & SPEC. NO.	ELEC. DES. APP	MECH. DES. APP
				MS-1402 C

MS-1406
A



$\frac{13}{64}$ (.203) DIA. HOLE - 2 REQ.

NOTICE TO PERSONS RECEIVING THIS DRAWING

THE TECHNICAL MATERIEL CORPORATION claims proprietary right in the material disclosed hereon. This drawing is issued in confidence for engineering information only and may not be reproduced or used to manufacture anything shown hereon without permission from THE TECHNICAL MATERIEL CORPORATION to the user. This drawing is loaned for mutual assistance and is subject to recall at any time.

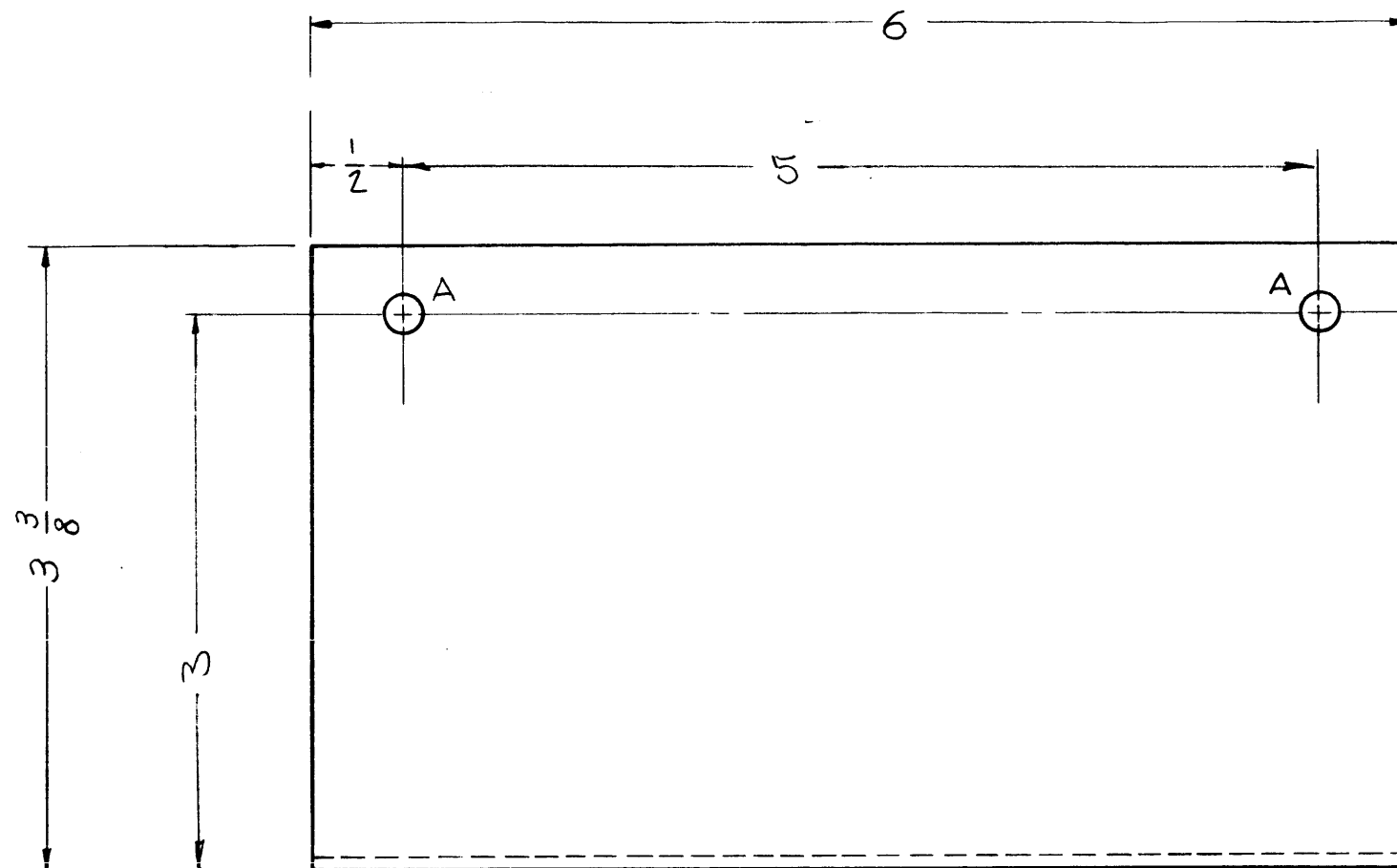
Property of:
THE TECHNICAL MATERIEL CORPORATION
MAMARONECK, NEW YORK

A	1	S-404 WAS S-101	12/15/59	1001	AB		EMN
ISSUE	ITEM	CHANGED FROM	DATE	CH. NO.	DRAFTS	CHECKER	ENG. APP.
TOLERANCES			SCALE: FULL SIZE				
DEC. DIM. \pm			MAXIMUM ALLOWABLE TOLERANCES HAVE BEEN DETERMINED AND ANY DEVIATIONS WILL BE CAUSE FOR REJECTION. REMOVE ALL BURRS AND SHARP EDGES				
FRAC. DIM. \pm 1/64							
ANGULAR DIM. \pm							

1	RTP-2			11-12-58
REQ. PER UNIT	MODEL	PROJECT NO.	ASS'Y. NO.	DATE
USED ON				

REQ. ITEM	PART NO.	DESCRIPTION			SYMBOL
.064 THICK		THE TECHNICAL MATERIEL CORP.			
STOCK SIZE		MAMARONECK, NEW YORK			
ALUMINUM		PLATE, CABLE, TUBE CAPS			
MATERIAL					
5052-H32		11-12-58			
TYPE & TEMPER	HEAT TREAT. SPEC.	DRAWN	CHECKED	FINAL APPROVAL	
S-404 YELLOW IRIDITE				MS-1406 A	
FINISH & SPEC. NO.		ELEC. DES. APP.	MECH. DES. APP.		

MS-1407 A



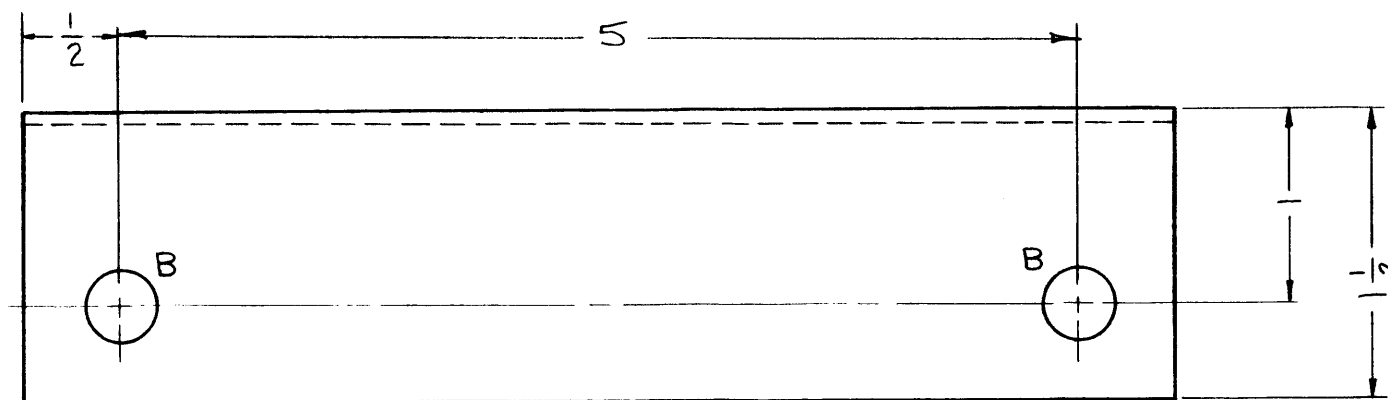
HOLE LEGEND

A ~ 13/64 (203) DIA. 2 HOLES REQ.
 B ~ 3/8 (.375) DIA. 2 " "

NOTICE TO PERSONS RECEIVING THIS DRAWING

THE TECHNICAL MATERIEL CORPORATION claims proprietary right in the material disclosed hereon. This drawing is issued in confidence for engineering information only and may not be reproduced or used to manufacture anything shown hereon without permission from THE TECHNICAL MATERIEL CORPORATION to the user. This drawing is loaned for mutual assistance and is subject to recall at any time.

Property of:
 THE TECHNICAL MATERIEL CORPORATION
 MAMARONECK, NEW YORK

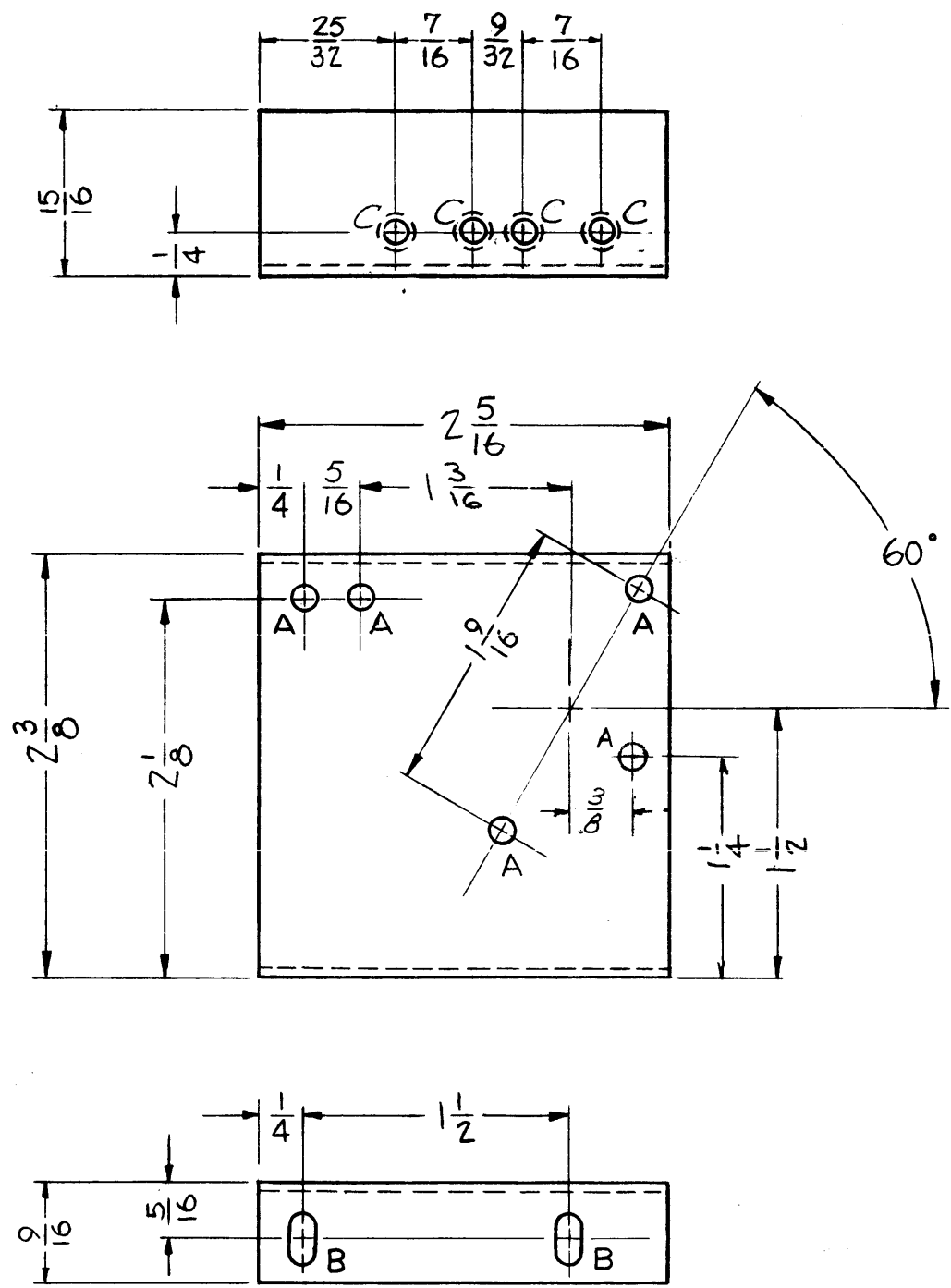


A	1	S-404 WAS S-101	12/15/59	1001	AB		EMN
ISSUE	ITEM	CHANGED FROM	DATE	CH. NO.	DRAFTS	CHECKER	ENG. APP.
TOLERANCES			SCALE: $\frac{1}{2}$				
DEC. DIM. \pm			MAXIMUM ALLOWABLE TOLERANCES HAVE BEEN DETERMINED AND ANY DEVIATIONS WILL BE CAUSE FOR REJECTION. REMOVE ALL BURRS AND SHARP EDGES				
FRAC. DIM. \pm							
ANGULAR DIM. \pm							

1	RTM-2			11-8-58
REQ. PER UNIT	MODEL	PROJECT NO.	ASS'Y. NO.	DATE
USED ON				

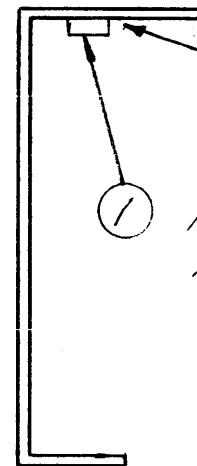
REQ. ITEM	PART NO.	DESCRIPTION	SYMBOL
	.064	THE TECHNICAL MATERIEL CORP.	
	STOCK SIZE	MAMARONECK, NEW YORK	
	ALUMINUM	PLATE, CABLE RETAINER	
MATERIAL			
5052-H-32		J.C. BIELE	
TYPE & TEMPER	HEAT TREAT. SPEC.	DRAWN	CHECKED
S-404 YELLOW IRIDITE			
FINISH & SPEC. NO.	ELEC. DES. APP.	MECH. DES. APP.	
			MS-1407 A

MS 1418 D



A ~ 9/64 (140) DIA.
 B ~ 9/64 X 9/32 SLOTS
 C ~ .161 ± .003

5 HOLES REQ'D.
 2 SLOTS REQ'D.
 4 HOLES REQ.



MARK TMC P/N (MS1418)
 1/8 HIGH GOTHIC W/LATEST
 REVISION LETTER.

MT. AS SHOWN IN 4 'C' HOLES
 AFTER FINISHING

NOTE TO PERSONS RECEIVING THIS DRAWING

THE TECHNICAL MATERIEL CORPORATION claims proprietary right in the material disclosed hereon. This drawing is issued in confidence for engineering information only and may not be reproduced or used to manufacture anything shown hereon without permission from THE TECHNICAL MATERIEL CORPORATION to the user. This drawing is loaned for mutual assistance and is subject to recall at any time.

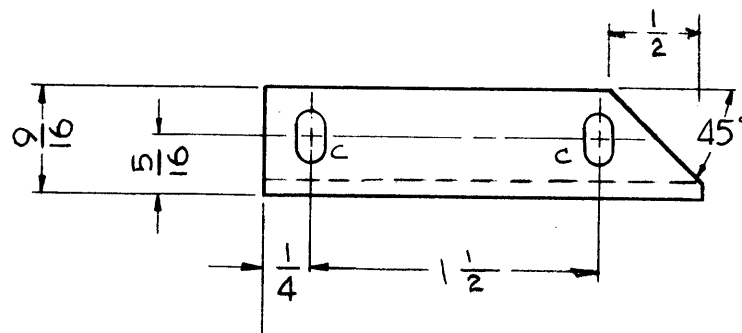
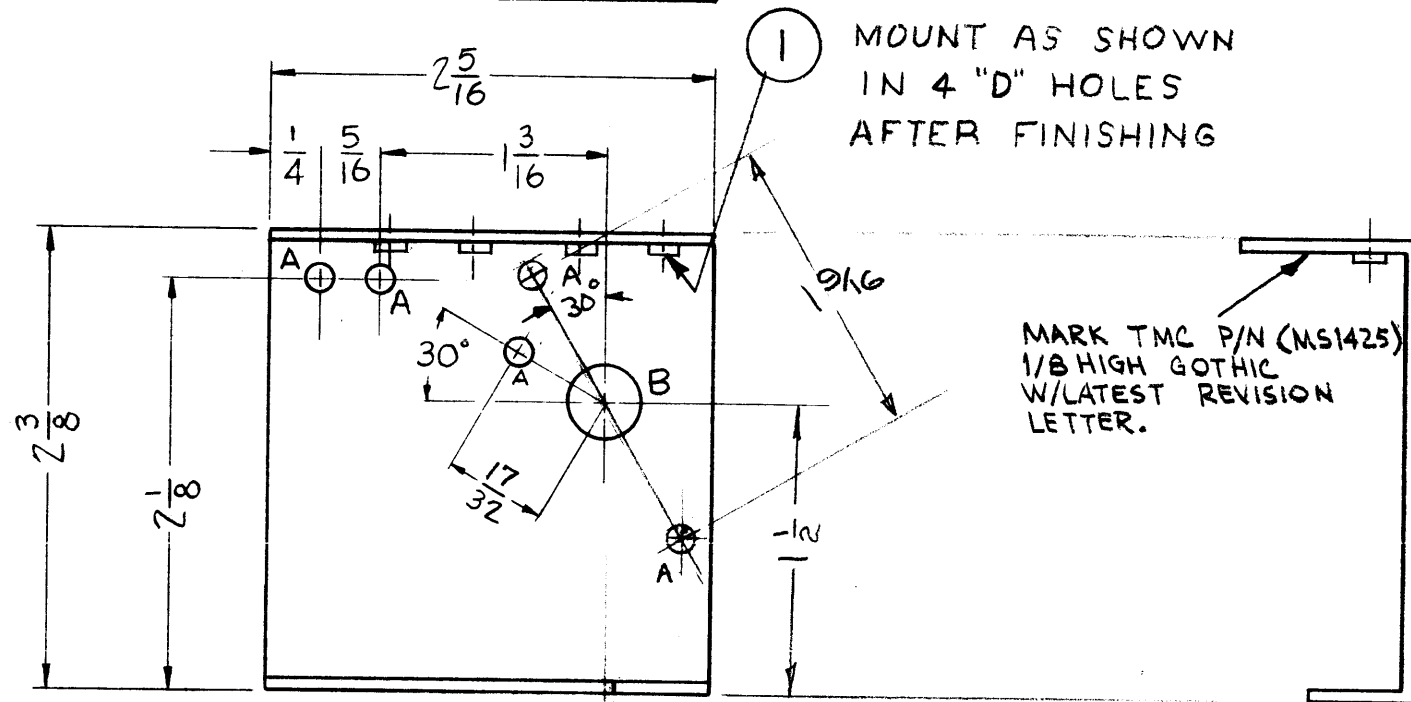
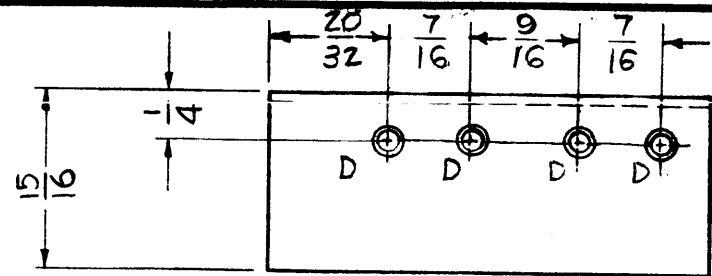
Property of:
 THE TECHNICAL MATERIEL CORPORATION
 MAMARONECK, NEW YORK

REF. LD 476

①	ADD IT. 1	1/16/70	20061	GE	CO	PEB	
C	ADD MARKING NOTE	11/15/66	17262	RME		JCS/MSB	
B	1 S-404 WAS S-101	12/5/59	1001	AB		EMN	
A	1 ADDED 'A' HOLE	12/22/58	601	ave		WJ/ATK	
ISSUE	ITEM	CHANGED FROM	DATE	CH. NO.	DRAFTS	CHECKER	ENG. APP.
TOLERANCES		SCALE:					
DEC. DIM. ±		MAXIMUM ALLOWABLE TOLERANCES HAVE BEEN DETERMINED AND ANY DEVIATIONS WILL BE CAUSE FOR REJECTION.					
FRAC. DIM. ±		REMOVE ALL BURRS AND SHARP EDGES					
ANGULAR DIM. ±							
1	REQ. PER UNIT	RTF-2	MULT.		12-2-58		
		MODEL	PROJECT NO.	ASS'Y. NO.	DATE		
USED ON							

4	1	NT129-0440-4	NUT ROUND SWAGE TYPE
REQ. ITEM	PART NO.		DESCRIPTION
.062		THE TECHNICAL MATERIEL CORP. MAMARONECK, NEW YORK	
STOCK SIZE		BRACKET, BAND SW, REAR	
ALUMINUM			
MATERIAL			
5052 H-32		J.C. BIELE	JADE
TYPE & TEMPER	HEAT TREAT. SPEC.	DRAWN	CHECKED
S-404 YELLOW IRIDITE			
FINISH & SPEC. NO.		ELEC. DES. APP.	MECH. DES. APP.
			MS 1418 D

MS 1425 B



- A ~ 9/64 (.140) DIA.
- B ~ 3/8 (.375) DIA.
- C ~ 9/64 X 9/32 SLOTS
- D ~ .161 ^{+0.003} _{-0.000}

- 5 HOLES REQ'D
- 1 HOLE REQ'D
- 2 SLOTS REQ'D
- 4 HOLES REQ'D

NOTICE TO PERSONS RECEIVING THIS DRAWING
 THE TECHNICAL MATERIEL CORPORATION claims proprietary right in the material disclosed hereon. This drawing is issued in confidence for engineering information only and may not be reproduced or used to manufacture anything shown hereon without permission from THE TECHNICAL MATERIEL CORPORATION to the user. This drawing is loaned for mutual assistance and is subject to recall at any time.

Property of:
 THE TECHNICAL MATERIEL CORPORATION
 MAMARONECK, NEW YORK

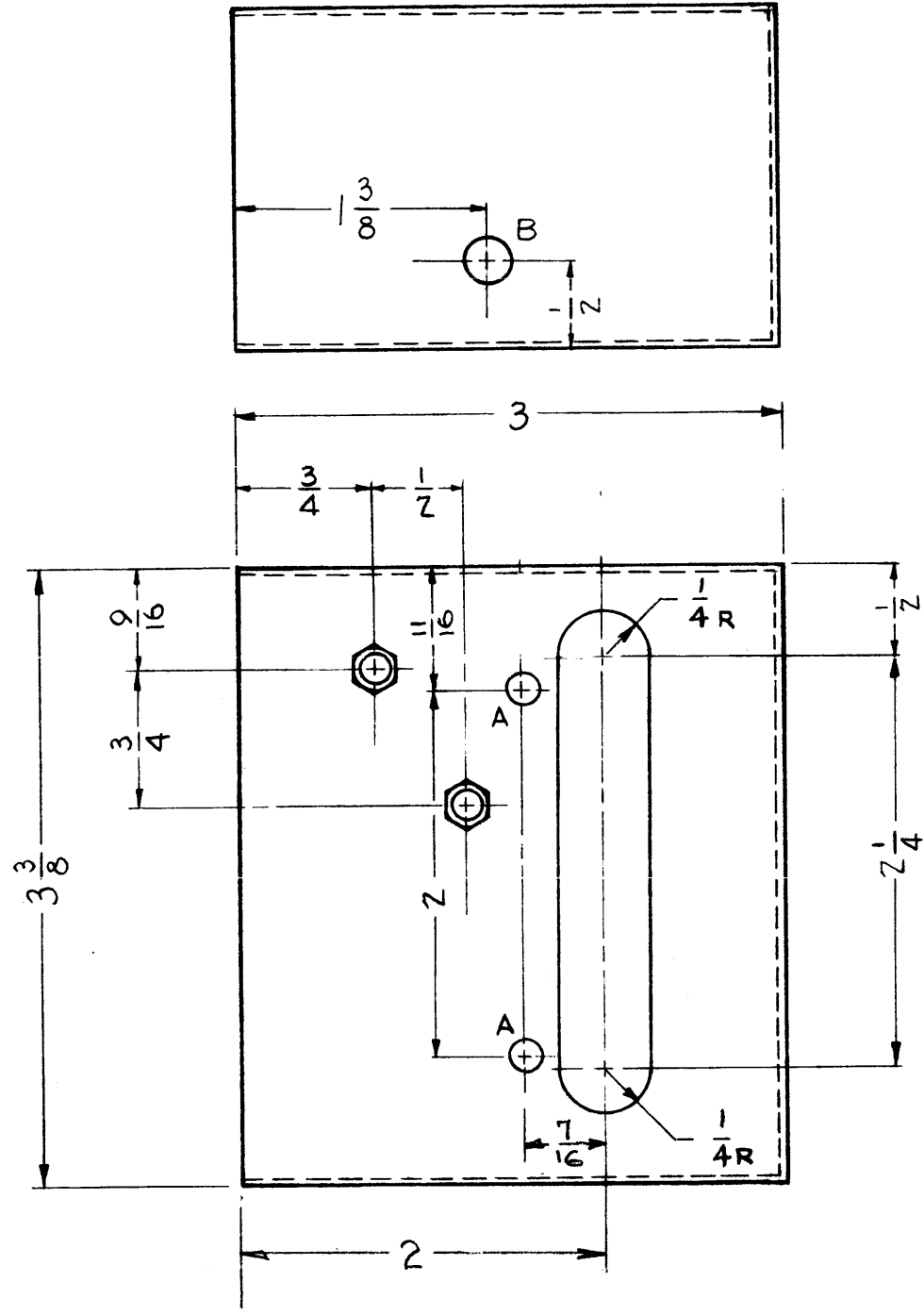
REF LD 469

C	ADD 'D' & ITEM 1	11/17/70	20067	R7	W	PEL	
B	ADD MARKING NOTE	11/15/66	17262	RME	W	PEL	
A	1 S-404 WAS S-101	12/19/59	1001	AB		EMN	
IS USE	ITEM	CHAN ED FROM	DATE	CH. NO.	DRAFTS	CHECKER	ENG. APP.
TOLERANCES		SCALE:					
DEC. DIM. ±	MAXIMUM ALL WABLE TOLERANCES HAVE BEEN DETERMINED AND ANY DEVIATIONS WILL BE CAUSE FOR REJECTION: REMOVE ALL BURRS AND SHARP ED ES						
FRAC. DIM. ±							
ANGULAR DIM. ±							

1	RTF-2	MULT	11-26-58
REQ. PER UNIT	MODEL	PROJECT NO.	ASSY. NO.
			DATE
USED ON			

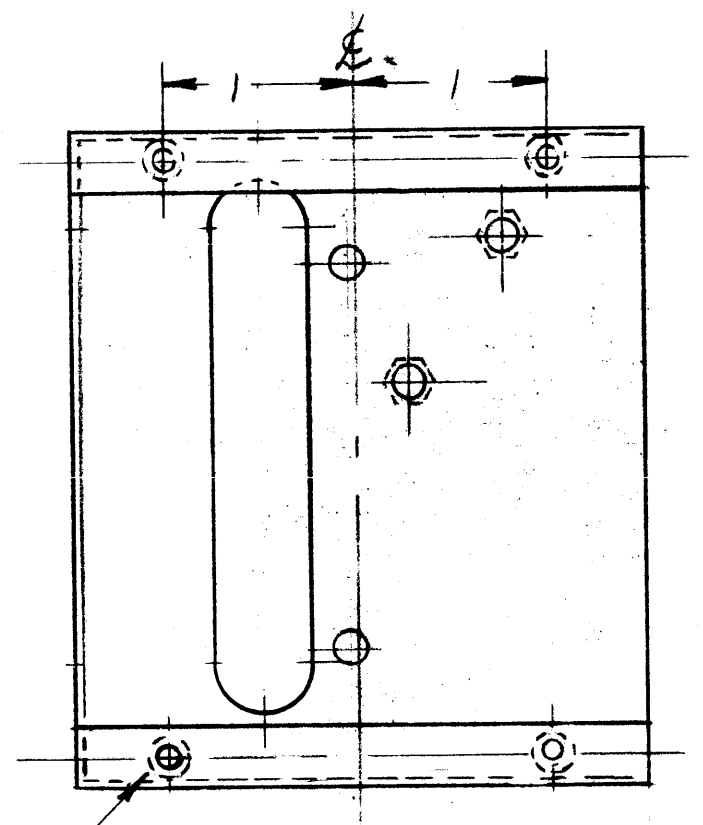
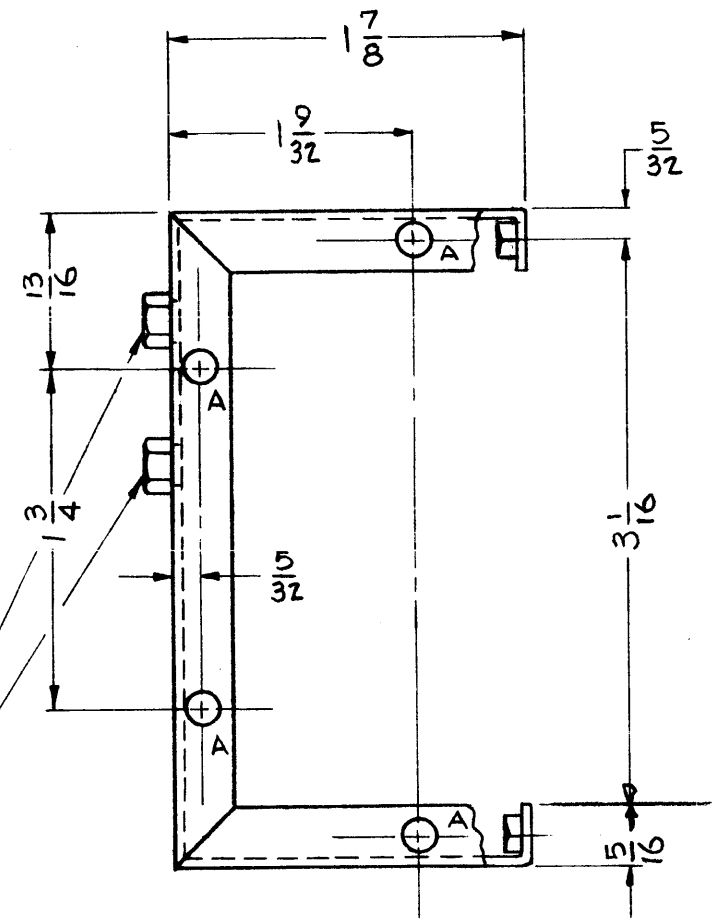
4	1	NT129-440-4	NUT, ROUND, SWAGE TYPY	
REQ.	ITEM	PART NO.	DESCRIPTION	SYMBOL
		.064	THE TECHNICAL MATERIEL CORP.	
		STOCK SIZE	MAMARONECK, NEW YORK	
		ALUMINUM	BRACKET, BAND SW, FRONT	
		MATERIAL		
		5052-H32	J.C. BIELE	
		TYPE & TEMPER	DRAWN	CHECKED
		HEAT TREAT. SPEC.		FINAL
		S404 YEL IRIDITE		
		FINISH & PEC. NO.	REC. DES. APP.	TECH. DES. APP.
				MS 1425 C

MS-1437 C

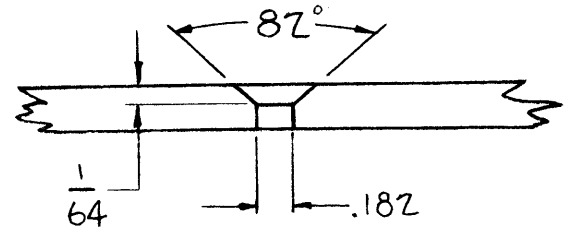


A - 11/64 (.171) DIA.
B - 1/4 (.250) DIA.

6 REQ'D.
1 REQ'D.



SM-107-12 - 2 REQ'D.
#14 DRILL (.182)
CTS'K 82° 1/64 DP.



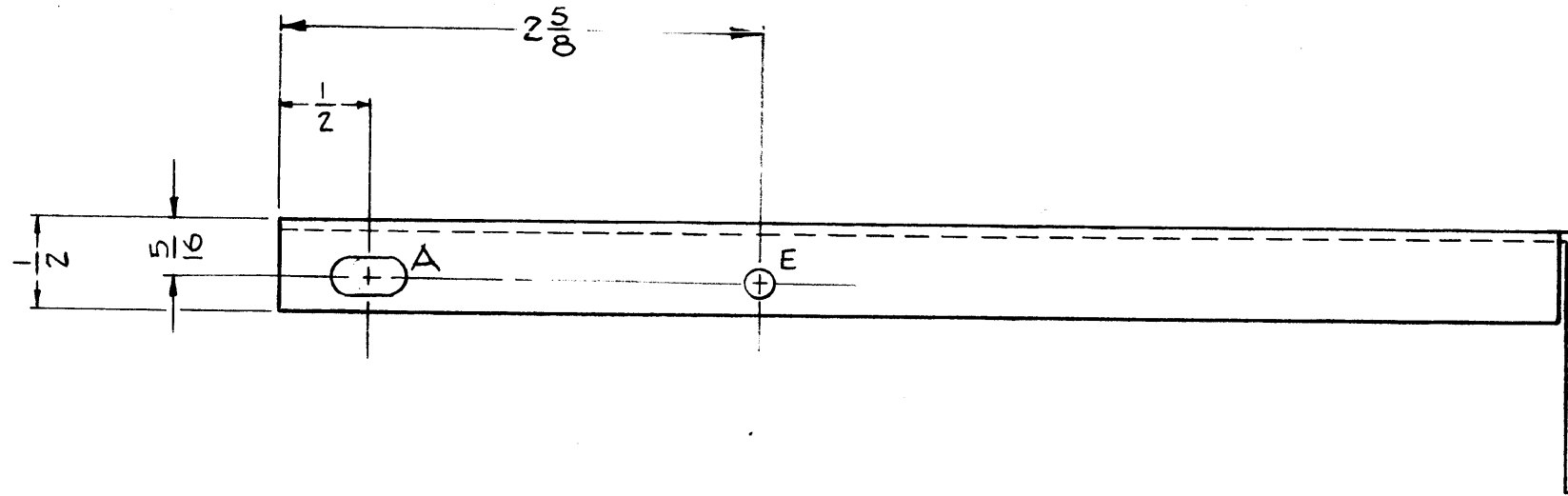
SWAGE NUTS TMC # NT-129-440-3
4 REQ'D.
MOUNTING HOLE .160 DIA.

ISSUE	ITEM	CHANGED FROM	DATE	CH. NO.	DRAFTS	CHECKER	ENG. APP.
C	1	S-404 WAS S-101	12/15/59	1001	AB		EMN
B	2	SWAGE NUTS ADDED	1/21/59	671	JCB		
	1	FOUR SM-107-2 Deleted					
A	1	B HOLE ADDED	12-19-58	596	J.C.B.		
TOLERANCES			SCALE:				
DEC. DIM. ±			MAXIMUM ALLOWABLE TOLERANCE HAVE BEEN DETERMINED AND ANY DEVIATIONS WILL BE CAUSE FOR REJECTION: REMOVE ALL BURRS AND SHARP ED ES				
FRAC. DIM. ± 1/64							
ANGULAR DIM. ±							

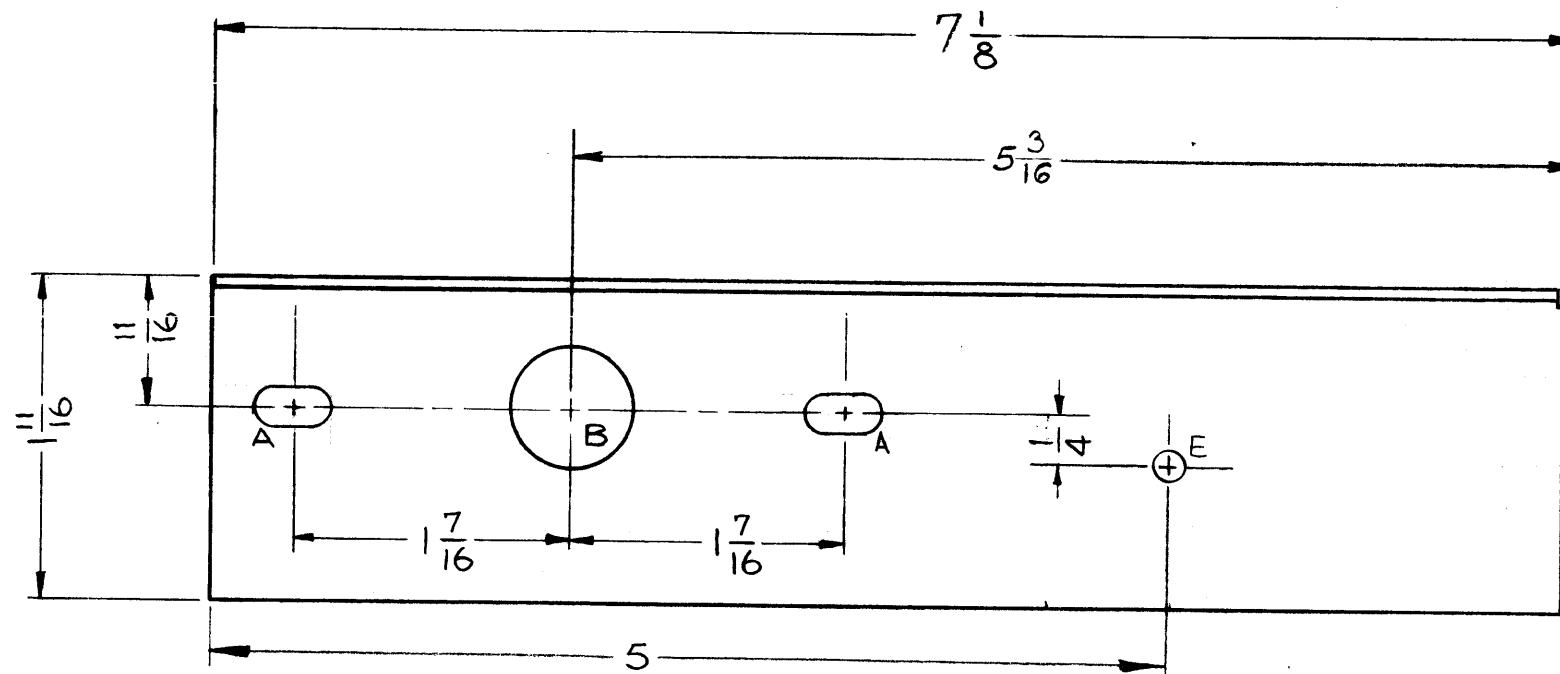
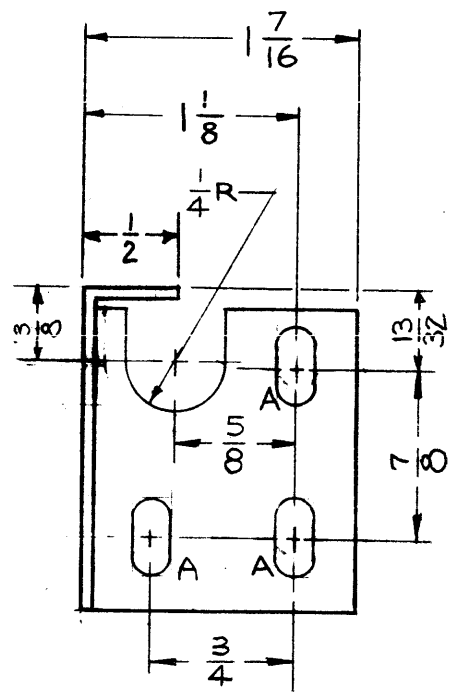
REQ. PER UNIT	MODEL	PROJECT NO.	AS Y. NO.	DATE
1	GPT-10,500	IPA	685-2	12-15-58
USED ON				

REQ.	ITEM	PART NO.	DESCRIPTION		SYMBOL
		.051	THE TECHNICAL MATERIEL CORP.		
		STOCK SIZE	MAMARONECK, NEW YORK		
		ALUMINUM	DUCT, BLOWER		
		MATERIAL			
		5052-H32	J.C. BIELE		
		TYPE & TEMPER	DRAWN	CHECKED	FINAL APPROVAL
		S-404 YELLOW IRIDITE			
		FINISH & SPEC. N.	ELEC. DES. APP.	MECH. DES. APP.	

MS-1438 E



A - 13/64 x 13/32 SLOTS 6 REQ'D.
 B - 5/8 (.625) DIA. 1 "
 E - 5/32 (.156) DIA. 2 "



NOTICE TO PERSONS RECEIVING THIS DRAWING
 THE TECHNICAL MATERIEL CORPORATION claims proprietary right in the material disclosed hereon. This drawing is issued in confidence for engineering information only and may not be reproduced or used to manufacture anything shown hereon without permission from THE TECHNICAL MATERIEL CORPORATION to the user. This drawing is loaned for mutual assistance and is subject to recall at any time.
 Property of:
 THE TECHNICAL MATERIEL CORPORATION
 MAMARONECK, NEW YORK

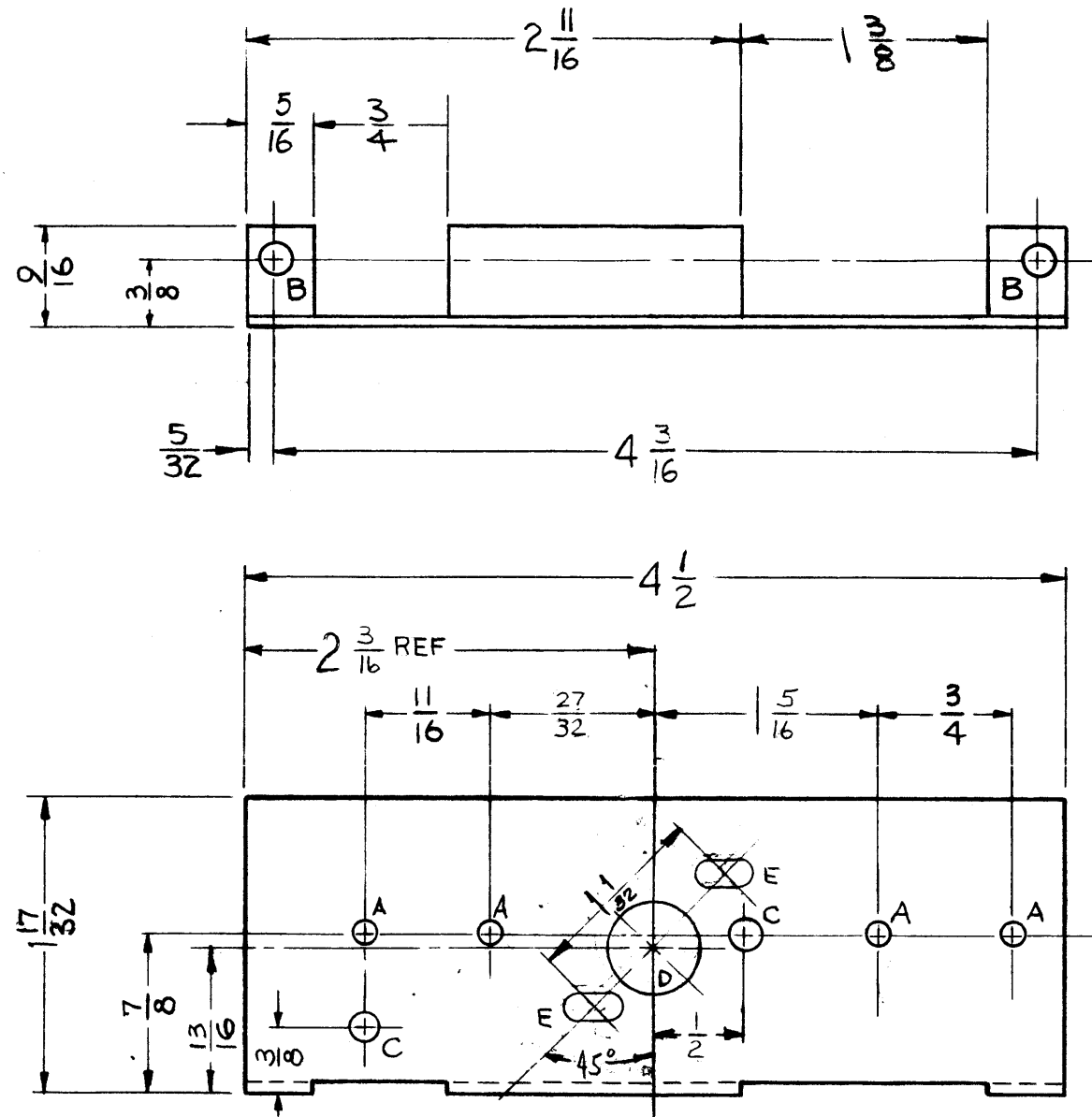
E	1	5 5/16 WAS 5 5/32 (CENTER)	12-19-60	3761	RU		
D	1	CHG. C HOLE TO V2 NOTCH	5-17-60	2288	CS		
C	1	DIM. CORRECTED 3 SLOTS 2 HOLES	12-1-59	1624	DM		
B	1	FINISH WAS 3101 3107	6/23/59				
A	1	ADDED 4 A-SLOTS 1 D HOLE	3/20/59		IDRUID		
ISSUE	ITEM	CHANGED FROM	DATE	CH. NO.	DRAFTS	CHECKER	ENG. APP.

TOLERANCES		SCALE: 1" = 1"
DEC. DIM. ±		
FRAC. DIM. ± 1/64		
ANGULAR DIM. ±		
MAXIMUM ALLOWABLE TOLERANCES HAVE BEEN DETERMINED AND ANY DEVIATIONS WILL BE CAUSE FOR REJECTION. REMOVE ALL BURRS AND SHARP ED ES		

1	RFC-1			12-19-60
1	RFD-1	PAL-1K		6-23-59
1	RFB-1	GPI-10K		12-4-58
REQ. PER UNIT	MODEL	PROJECT NO.	ASSY. NO.	DATE
USED ON				

REQ.	ITEM	PART NO.	DESCRIPTION		SYMBOL
		.081	THE TECHNICAL MATERIEL CORP.		
		STOCK SIZE	MAMARONECK, NEW YORK		
		ALUMINUM	BRACKET, FRONT SW		
		MATERIAL			
		5052-H32	J.C. BIELE		
		TYPE & TEMPER	DRAWN	CHECKED	FINAL APPROVAL
		HEAT TREAT. SPEC.			
		S404 IRIDITE			
		FINISH & SPEC. NO.	LEG. DES. APP. MECH. DES. APP.		MS-1438 E

MS-1441 G



- A - 1/8 (.125) DIA.
- B - 11/64 (.171) DIA.
- C - .161 DIA.
- D - 1/2 (.500) DIA.
- E - 9/64 X 9/32 SLOTS

- 4 REQ'D.
- 2 "
- 2 "
- 1 "
- 2 REQ

NOT TO BE REPRODUCED RECEIVING THIS DRAWING

THE TECHNICAL MATERIEL CORPORATION claims proprietary right in the material disclosed hereon. This drawing is issued in confidence for engineering information only and may not be reproduced or used to manufacture anything shown hereon without permission from THE TECHNICAL MATERIEL CORPORATION to the user. This drawing is loaned for mutual assistance and is subject to recall at any time.

Property of:
THE TECHNICAL MATERIEL CORPORATION
MAMARONECK, NEW YORK

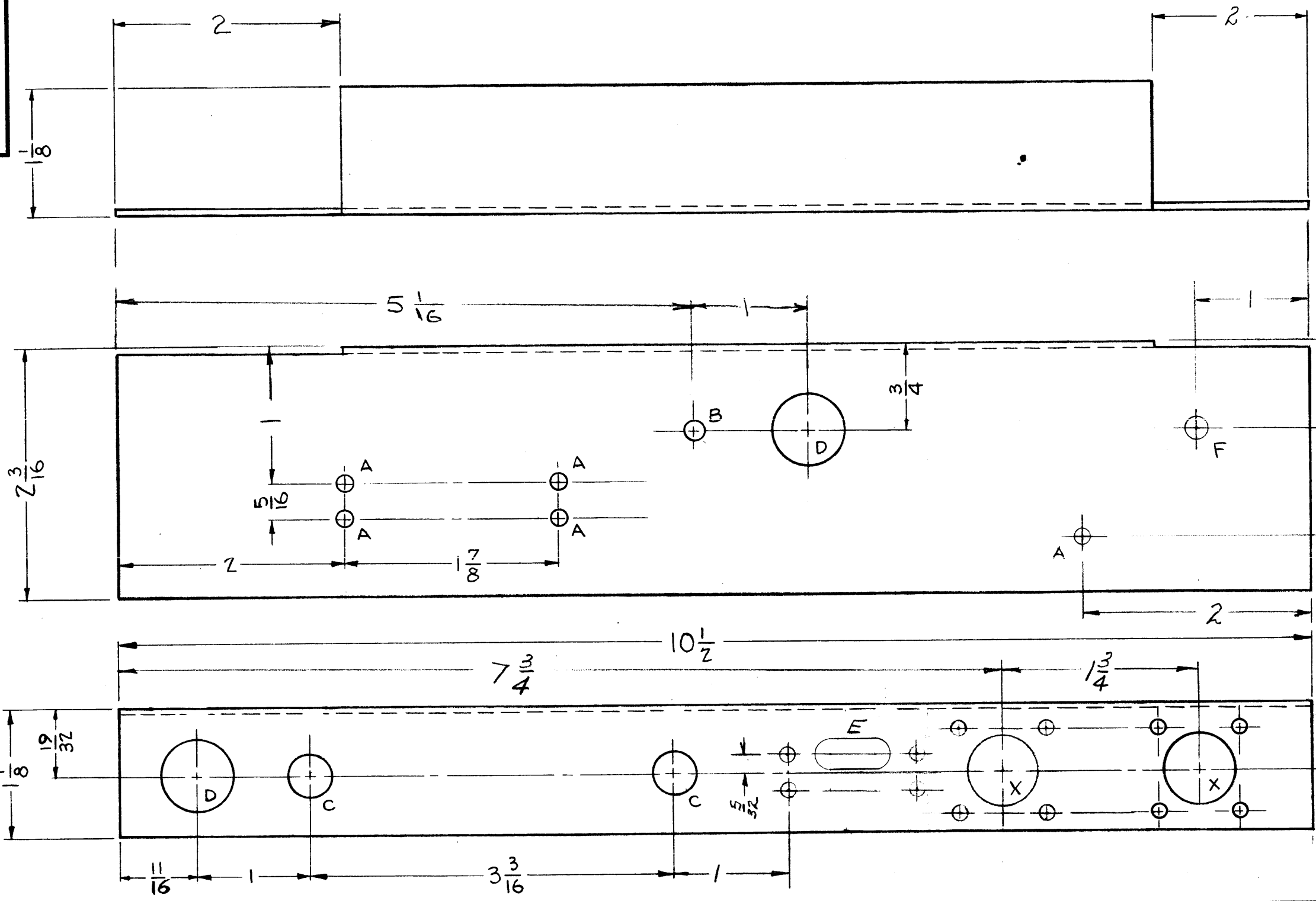
G	2	DIM CLASSED CHANGED	7-7-60	6353	GS		
F	3	DIM 4-1/2 WAS 4-9/16	6-26-61	5123	DLG	RU	
E	1	"D" HOLE WAS 5/8	5-18-60	2287	CM		
D	1	45° added	12-1-59	1623	DM		
C	1	Finish WAS S101, S-107	6/23/59				
B	1	"D" hole Relocated	3/20/59		DR R116		
A	1	hole added	2/4/59	7-71	J.C.B.		

REQ. PER UNIT	1	MODEL	RFC-1	PROJECT NO.	PAL-1K	A SY. NO.		DATE	11-22-60
	1		RFB-10		GPT-10K				6-23-59
									12-18-58

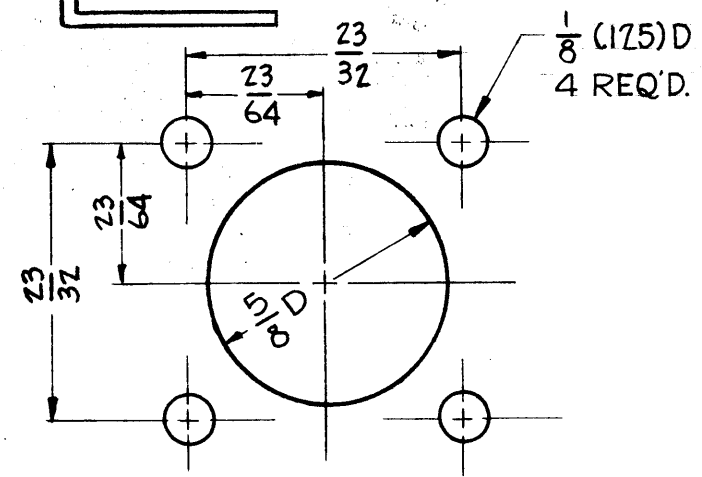
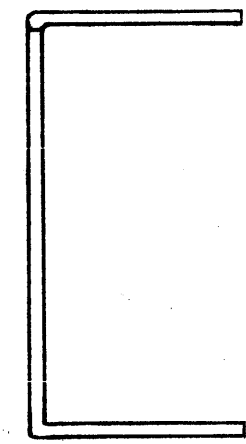
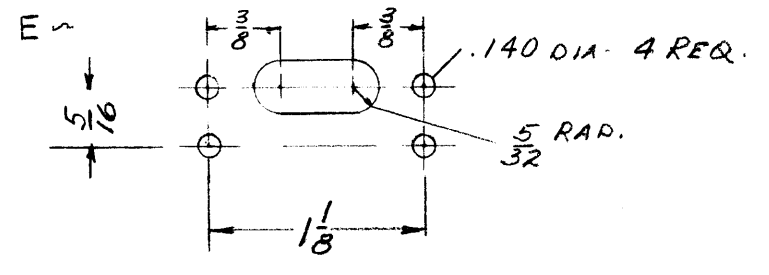
SCALE:	
DEC. DIM. ±	
FRAC. DIM. ± 1/64	
ANGULAR DIM. ±	
MAXIMUM ALLOWABLE TOLERANCES HAVE BEEN DETERMINED AND ANY DEVIATIONS WILL BE CAUSE FOR REJECTION. REMOVE ALL BURRS AND SHARP EDGES	

REQ. ITEM	PART NO.	DESCRIPTION	SYMB L
	.064	THE TECHNICAL MATERIEL CORP.	
		MAMARONECK, NEW YORK	
	ALUMINUM	BRACKET, SWITCH MOUNTING	
5052-H32		J.C.BIELE	
TYPE & TEMPER	HEAT TREAT. SPEC.	DRAWN	CHECKED
S404 IRIDITE			
FINISH & PEC. NO.		ELEC. DES. APP.	ENG. APP.
			MS-1441 G

MS-1445 B



- F ~ 13/64 (.203) DIA. 1 REQ'D
- A ~ 9/64 (.140) DIA. 5 REQ'D
- B ~ 11/64 (.171) DIA. 1 "
- C ~ 3/8 (.375) DIA. 2 "
- D ~ 5/8 (.625) DIA. 2 "



X DETAIL ~ 2 REQ'D.

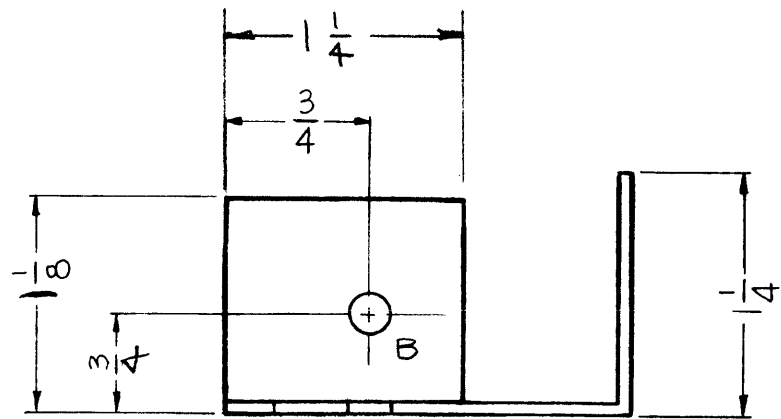
IS USE ITEM	CHANGED FROM	DATE	CH. N.	DRAFTS	CHECKER	ENG. APP.
B	S-404 WAS S-101	12/15/59	1001	AB		FMN
A	2" NOTCH WAS 1"	1/5/59	652	JHE	JH	JH

TOLERANCES		SCALE:	
DEC. DIM. ±	MAXIMUM ALLOWABLE TOLERANCES HAVE BEEN DETERMINED AND ANY DEVIATIONS WILL BE CAUSE FOR REJECTION: REMOVE ALL BURRS AND SHARP EDGES	1	AS SHOWN
FRAC. DIM. ±		REQ. PER UNIT	USED ON
ANGULAR DIM. ±			

REQ. PER UNIT	MODEL	PROJECT NO.	ASSY. NO.	DATE
1	GPT-10,000	IPA	685-2	12-15-58

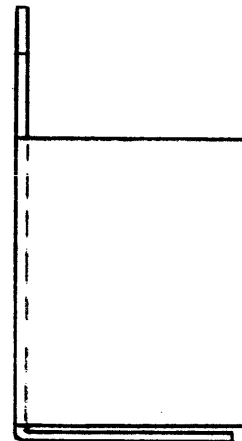
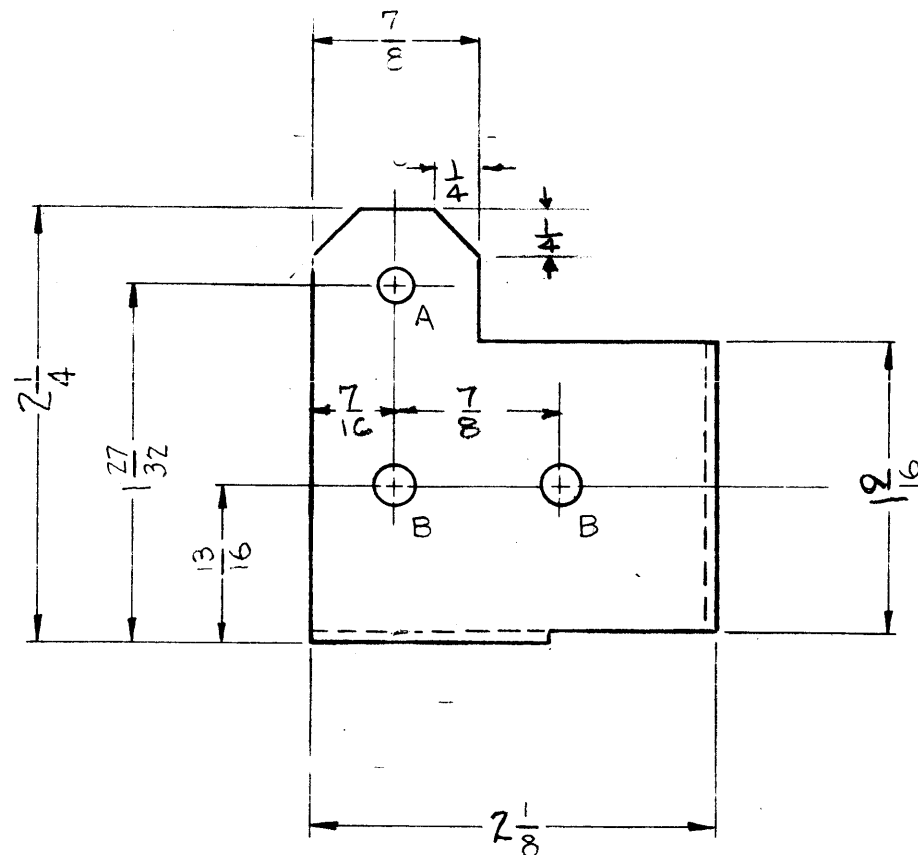
REQ. ITEM	PART NO.	DESCRIPTION	SYMBOL
	.064	THE TECHNICAL MATERIEL CORP.	
	STOCK SIZE	MAMARONECK, NEW YORK	
	ALUMINUM	CHASSIS, REAR CABLE EXCITER	
	MATERIAL		
5052-H32		J.C. BIELE	
	TYPE & TEMPER	DRAWN	CHECKED
	HEATTREAT. SPE.		FINAL APPROVAL
	S-404 YELLOW IRIDITE		
	FINISH & SPEC. N.		

MS-1454 A



A ~ 11/64 (.171) DIA.
 B ~ 13/64 (.203) DIA.

1 REQ.
 3 REQ.



NOTICE TO PERSONS RECEIVING THIS DRAWING
 THE TECHNICAL MATERIEL CORPORATION claims proprietary right in the material disclosed hereon. This drawing is issued in confidence for engineering information only and may not be reproduced or used to manufacture anything shown hereon without permission from THE TECHNICAL MATERIEL CORPORATION to the user. This drawing is loaned for mutual assistance and is subject to recall at any time.

Property of:
 THE TECHNICAL MATERIEL CORPORATION
 MAMARONECK, NEW YORK

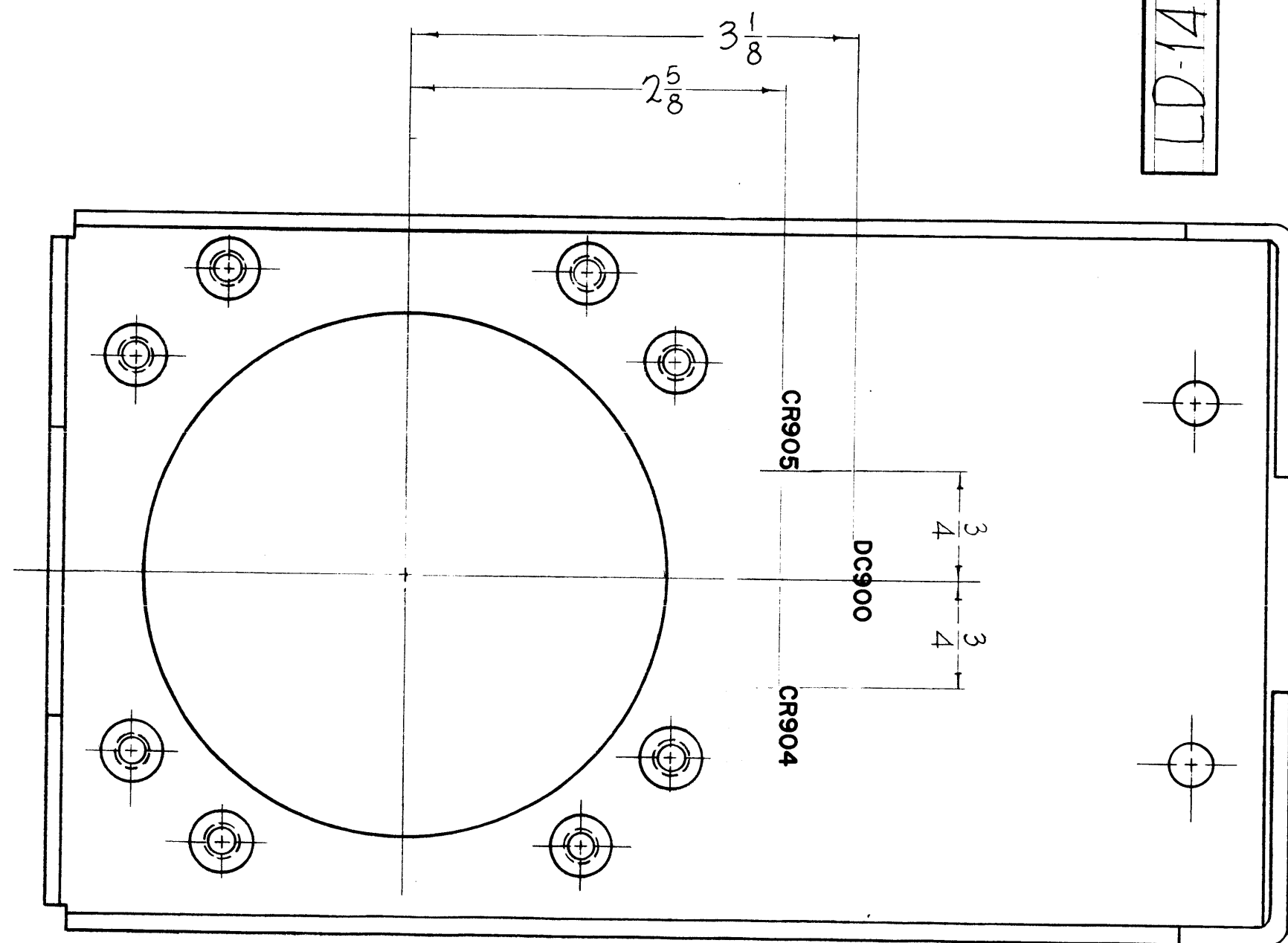
A	1	S-404 WAS S-101	12/15/59	1001	AB		EMN
ISSUE	ITEM	CHANGED FR M	DATE	CH. NO.	DRAFTS	CHECKER	ENG. APP.
TOLERANCES			SCALE: <i>H</i>				
DEC. DIM. ±			MAXIMUM ALLOWABLE TOLERANCES HAVE BEEN DETERMINED AND ANY DEVIATIONS WILL BE CAUSE FOR REJECTION: REMOVE ALL BURRS AND SHARP EDGES				
FRAC. DIM. ± <i>1/64</i>							
ANGULAR DIM. ±							

1	GPT-10,000	IPA		12-23-58
REQ. PER UNIT	MODEL	PROJECT NO.	ASSY. NO.	DATE
USED ON				

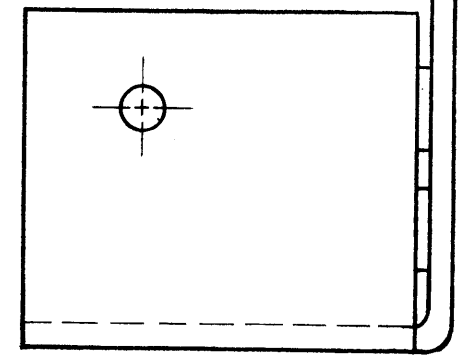
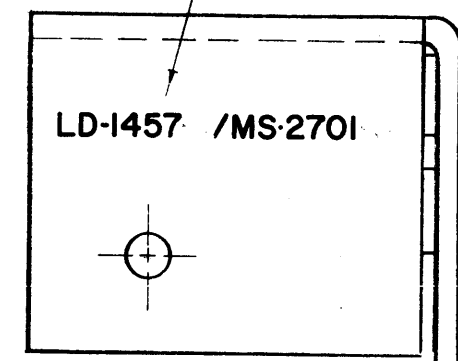
REQ.	ITEM	PART NO.	DESCRIPTION		SYMBOL
		.064	THE TECHNICAL MATERIEL CORP.		
		STOCK SIZE	MAMARONECK, NEW YORK		
		ALUMINUM	BRACKET, NEUTRALZER		
		MATERIAL			
		5052-H-32	J.C BIELE	<i>JCB</i>	<i>AMB</i>
		TYPE & TEMPER	DRAWN	CHECKED	FINAL APPROVAL
		S-404 YELLOW IRIDITE	<i>JCB</i>	<i>JCB</i>	
		FINISH & PEC. NO.	ELEC. DES. APP	MECH. DES. APP	MS-1454 A

LD-1457-A

REVISIONS					
SYM	DESCRIPTION	DATE	E.M.N. NO.	DRAFT	CHKD APPD
O	ORIGINAL RELEASE FOR PRODUCTION	5/11/64	O	A.M.	
A	CP 902 & CP 904 DELETED, CR905 WAS CR 902	5/11/64	NONE	A.M.	



MARK TMC PART NO. WITH LATEST REVISION LETTER



REF-TMC NO. MS-2701

MARKING PROCESS: AS PER TMC SPECIFICATION S-727.
LETTERING: 1/8 HIGH BLACK GOTHIC, LOCATED AS SHOWN.

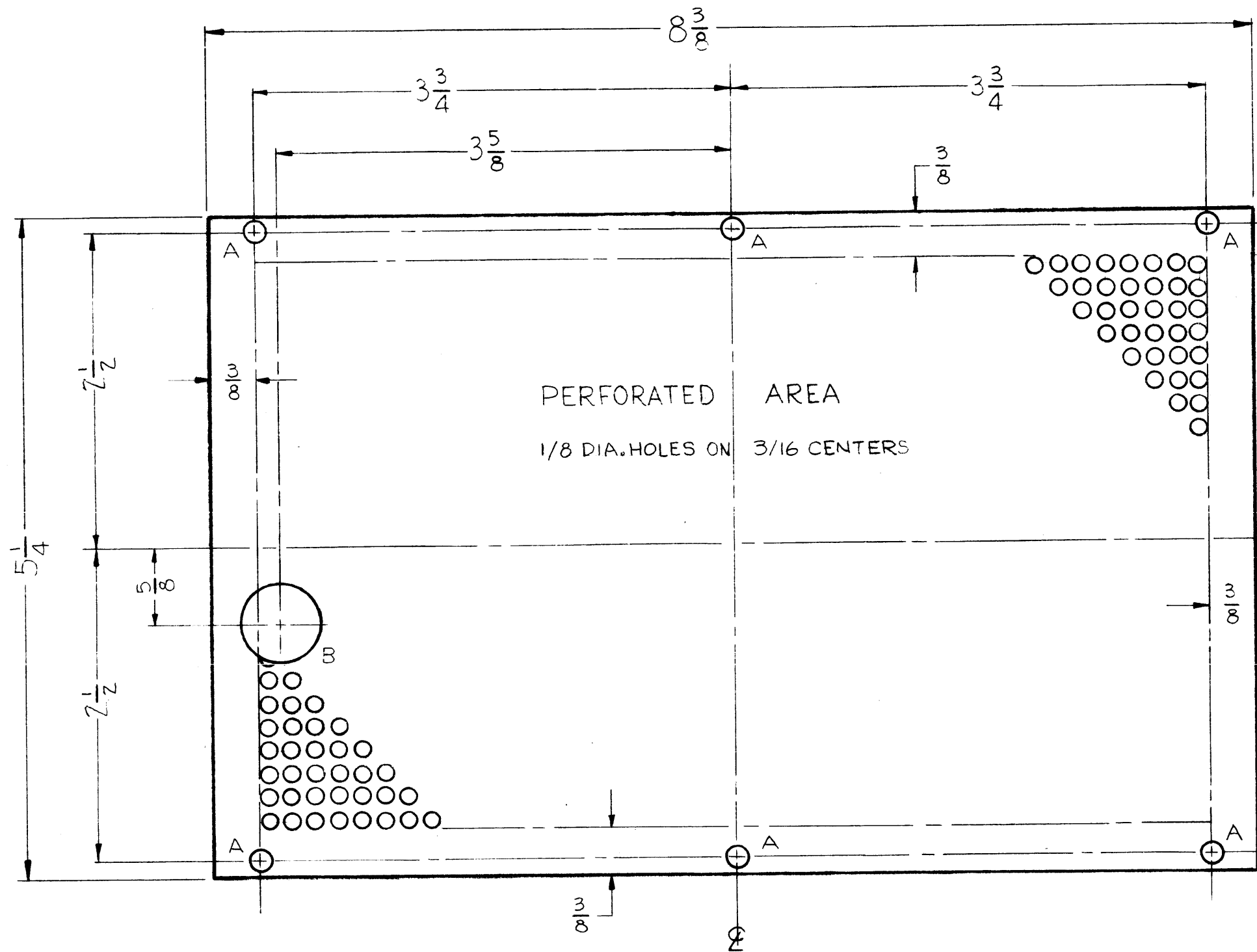
1	GPT10K()7(AX509)	A3426
Q'TY./UNIT	MODEL USED ON	ASS'Y. NO.
SCALE	CODE	
#	A	

NOTES

THE CONTENTS OF THIS DRAWING ARE THE EXCLUSIVE PROPERTY OF THE TECHNICAL MATERIEL CORP. ITS UNAUTHORIZED USE OR REPRODUCTION IN WHOLE OR IN PART IS STRICTLY FORBIDDEN.

REQ'D.	ITEM	PART NUMBER	DESCRIPTION	SYMBOL
F. BUDETTI LIST OF MATERIAL				
MATERIAL			THE TECHNICAL MATERIEL CORP. MAMARONECK, NEW YORK	
FINISH			TITLE MARKING BRACKET COUPLER MTG. MARKING METHOD: AS PER TMC SPEC S-727	
UNLESS OTHERWISE SPECIFIED DIMENSIONS ARE IN INCHES AND INCLUDE CHEMICALLY APPLIED OR PLATED FINISHES			DRAWN John C. Biele CHECKED [Signature] ELECT. DES. [Signature] MECH. DES. [Signature]	DATE 5/11/64 DATE 5/11/64 DATE
DECIMALS .X ± .05 .XX ± .01 .XXX ± .005			FRACTIONS ± 1/64 ANGLES ± 0° 30'	FINAL APPROVAL [Signature] DATE SHEET LD-1457 REV. LTR. A

MS-1467A



A ~ 11/64 (.171) DIA.
 B ~ 5/8 (.625) DIA.

6 REQ.
 1 REQ.

NOTICE TO PERSONS RECEIVING THIS DRAWING

THE TECHNICAL MATERIEL CORPORATION claims proprietary right in the material disclosed hereon. This drawing is issued in confidence for engineering information only and may not be reproduced or used to manufacture anything shown hereon without permission from THE TECHNICAL MATERIEL CORPORATION to the user. This drawing is loaned for mutual assistance and is subject to recall at any time.

Property of:
 THE TECHNICAL MATERIEL CORPORATION
 MAMARONECK, NEW YORK

REF-TMC DWG# MS-1468

ISSUE	ITEM	CHANGED FROM	DATE	CH. NO.	DRAFTS	CHECKER	ENG. APP.
A	1	S-404 WAS S-101	12/15/58	1001	MB		EMN
TOLERANCES			SCALE:				
DEC. DIM. ±			MAXIMUM ALLOWABLE TOLERANCES HAVE BEEN DETERMINED AND ANY DEVIATIONS WILL BE CAUSE FOR REJECTION: REMOVE ALL BURRS AND SHARP ED ES				
FRAC. DIM. ±							
ANGULAR DIM. ±							

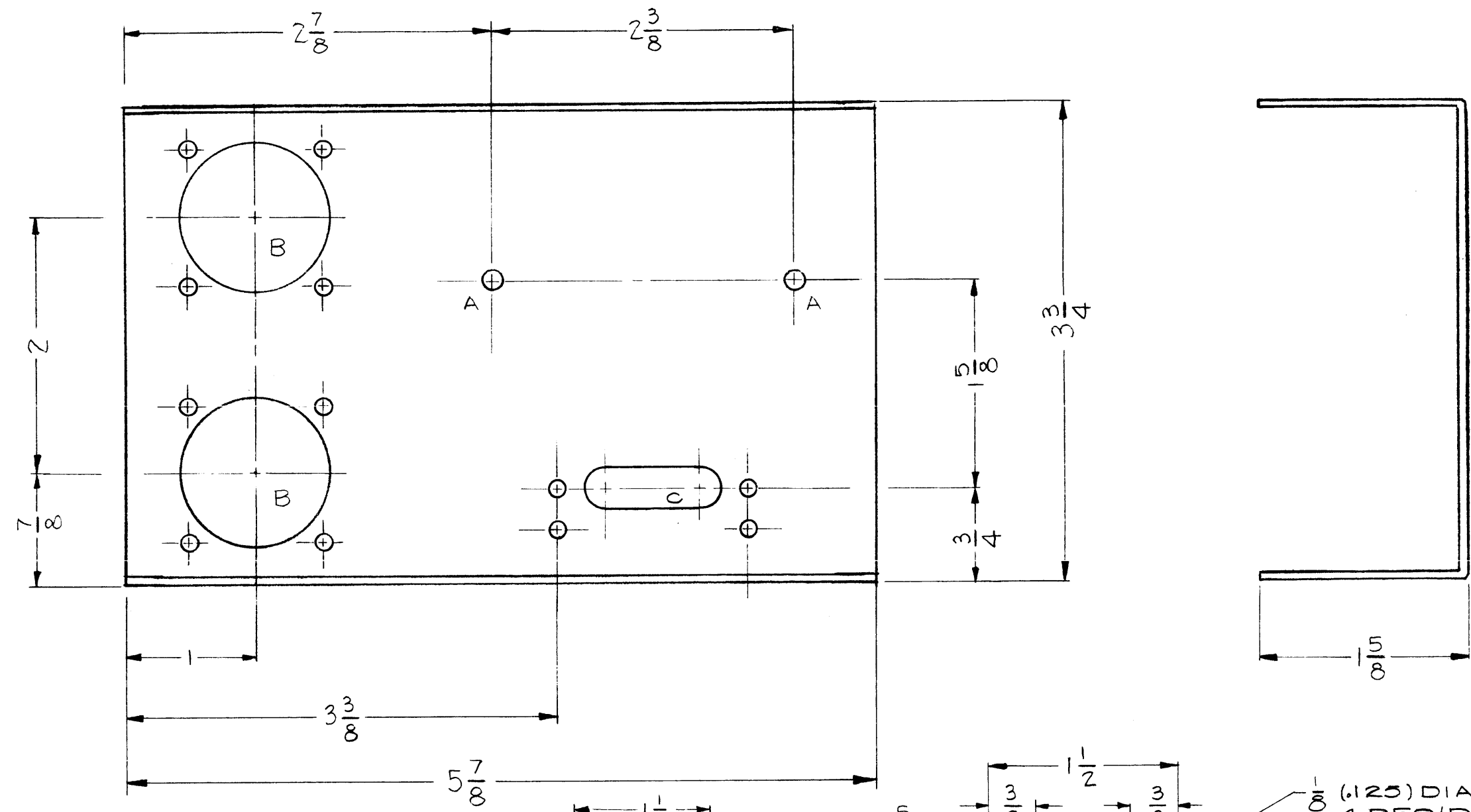
REQ. PER UNIT	9PT-10,000	IPA		12-24-58
	MODEL	PROJECT NO.	ASSY. NO.	DATE
USED ON				

REQ.	ITEM	PART NO.	DESCRIPTION	SYMBOL
		.064	THE TECHNICAL MATERIEL CORP.	
		STOCK SIZE	MAMARONECK, NEW YORK	
		ALUMINUM	SHIELD, R.F.	
MATERIAL				
		5052-H32	J.C.BIELE	<i>MB</i>
		TYPE & TEMPER	DRAWN	CHECKED
		S-404 YELLOW IRIDITE	<i>MB</i>	<i>MB</i>
		FINISH & SPEC. NO.	ELEC. DES. APP	MECH. DES. APP
				MS-1467A

MS-1474

A ~ 5/32 (.156) DIA.

2 REQ'D.

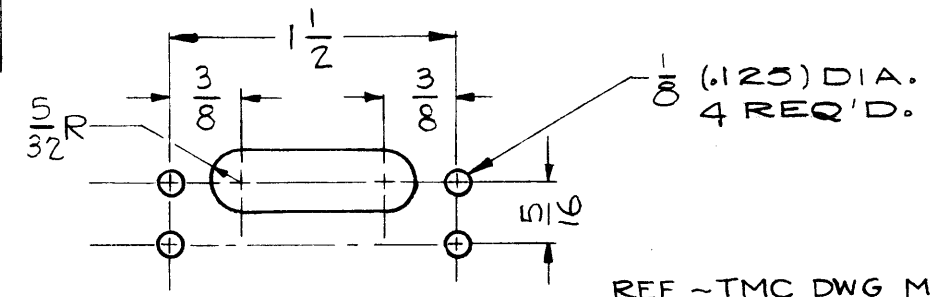
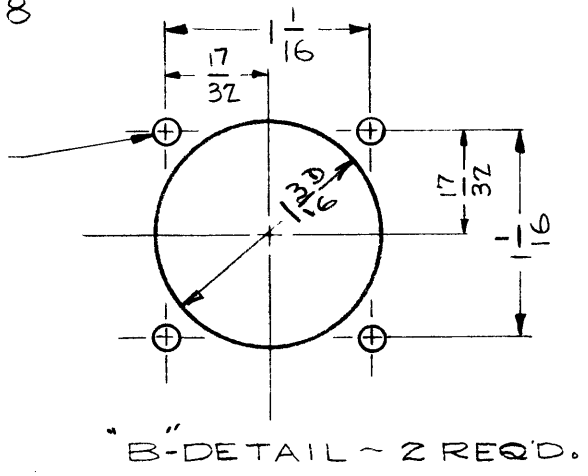


NOTICE TO PERSONS RECEIVING THIS DRAWING
 THE TECHNICAL MATERIEL CORPORATION claims proprietary right in the material disclosed hereon. This drawing is issued in confidence for engineering information only and may not be reproduced or used to manufacture anything shown hereon without permission from THE TECHNICAL MATERIEL CORPORATION to the user. This drawing is loaned for mutual assistance and is subject to recall at any time.

Property of:
 THE TECHNICAL MATERIEL CORPORATION
 MAMARONECK, NEW YORK

REF ~ TMC DWG MS-1360 SHEET 5 (REAR VIEW)

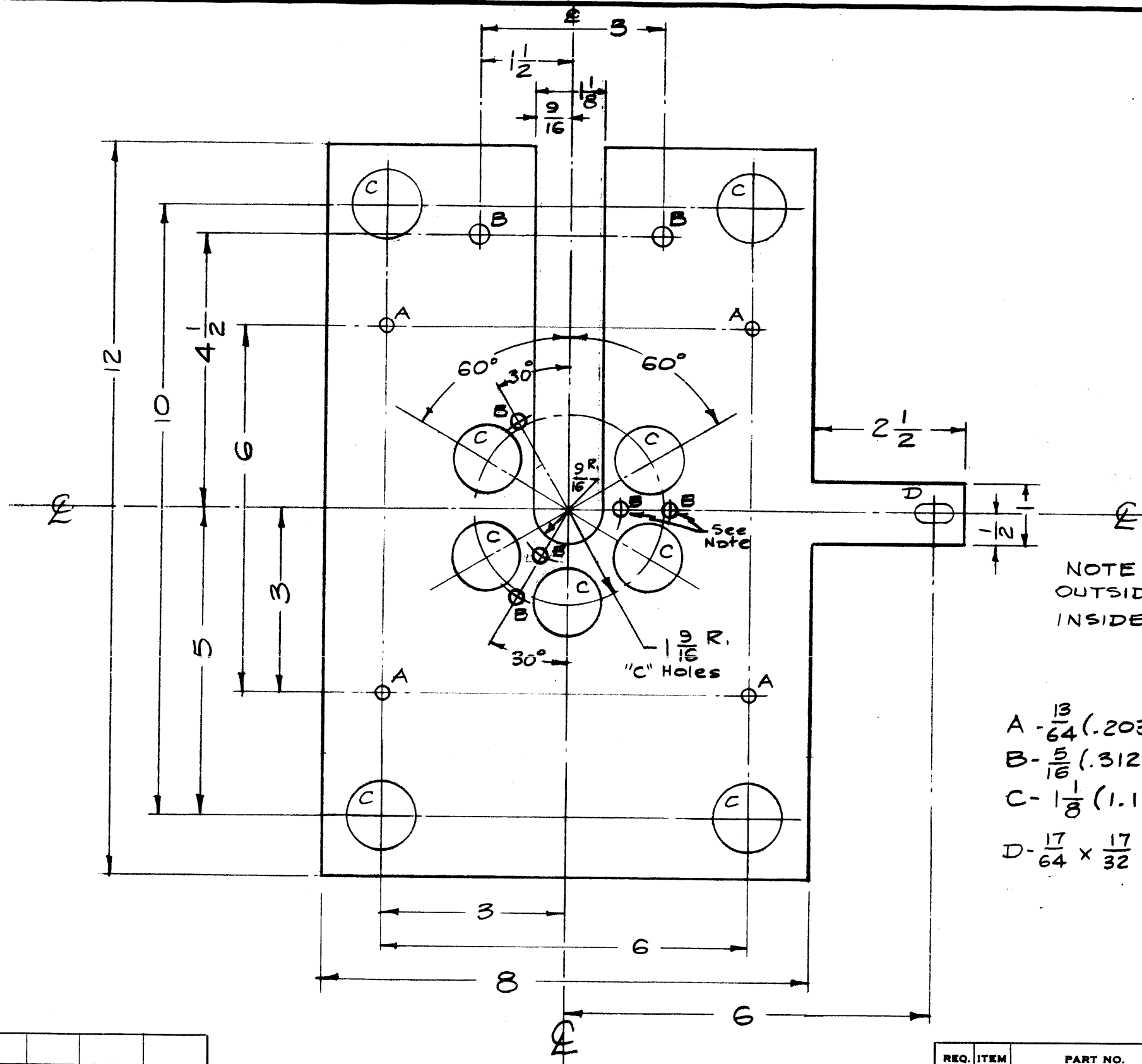
ISSUE	ITEM	CHAN	ED	FR	M	DATE	CH. NO.	DRAFTS	CHECKER	ENG. APP.
TOLERANCES						SCALE:				
DEC. DIM. ±						MAXIMUM ALLOWABLE TOLERANCES HAVE BEEN DETERMINED AND ANY DEVIATIONS WILL BE CAUSE FOR REJECTION:				
FRAC. DIM. ± 1/64						REMOVED ALL BURRS AND SHARP EDGES				
AN ULAR DIM. ±										



1	CAB-7		1-12-59
REQ. PER UNIT	MODEL	PROJECT NO.	DATE
		ASSY. NO.	

REQ. ITEM	PART NO.	DESCRIPTION		SYMBOL
.062		THE TECHNICAL MATERIEL CORP.		
STEEL		MAMARONECK, NEW YORK		
		MOUNTING PLATE, CONNECTOR		
		J.C. BIELE		
		DRAWN	CHECKED	FINAL APPROVAL
				MS-1474
		ELEC. DES. APP.	MECH. DES. APP.	

MS-1481



NOTICE TO PERSONS RECEIVING THIS DRAWING
 THE TECHNICAL MATERIEL CORPORATION claims proprietary right in the material disclosed hereon. This drawing is issued in confidence for engineering information only and may not be reproduced or used to manufacture anything shown hereon without permission from THE TECHNICAL MATERIEL CORPORATION to the user. This drawing is loaned for mutual assistance and is subject to recall at any time.

Property of:
 THE TECHNICAL MATERIEL CORPORATION
 MAMARONECK, NEW YORK

NOTE -
 OUTSIDE "B" HOLES (3) on $1 - \frac{5}{16}$ R.
 INSIDE "B" HOLES (2) on $\frac{7}{8}$ R.

- A - $\frac{13}{64}$ (.203) D. 4 Req.
- B - $\frac{5}{16}$ (.312) D. 7 Req. See Note Above
- C - $\frac{1}{8}$ (1.125) D. 9 Req.
- D - $\frac{17}{64} \times \frac{17}{32}$ Slot 1 Req.

ISSUE	ITEM	CHANGED FROM	DATE	CH. NO.	DRAFTS	CHECKER	ENG. APP.

TOLERANCES
 DEC. DIM. \pm
 FRAC. DIM. $\pm 1/64$
 ANGULAR DIM. $\pm 1^\circ$

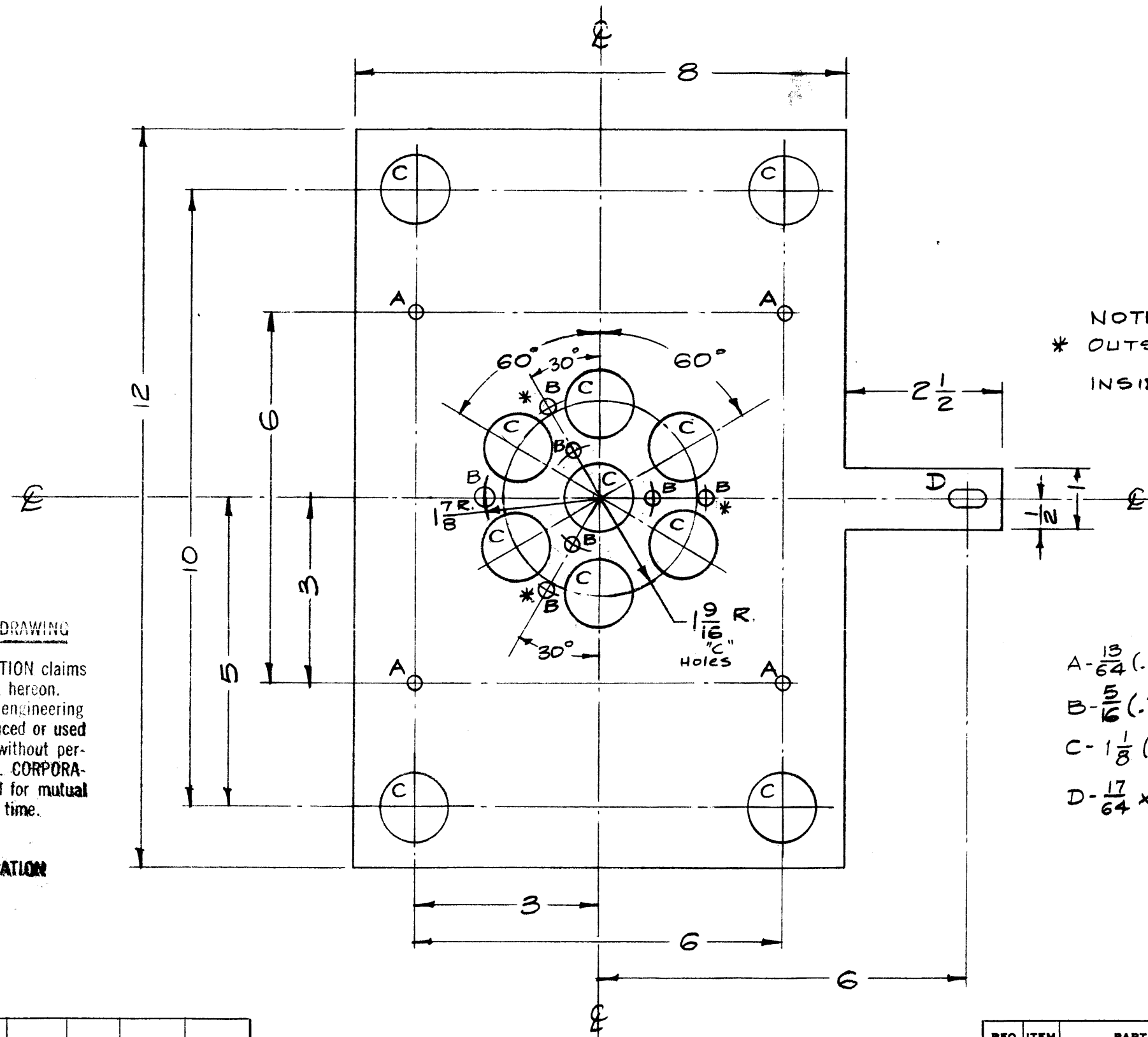
SCALE: 1/2

MAXIMUM ALLOWABLE TOLERANCES HAVE BEEN DETERMINED AND ANY DEVIATIONS WILL BE CAUSE FOR REJECTION. REMOVE ALL BURRS AND SHARP EDGES

2	TER-5000-70	2A-1635	1-26-59
REQ. PER UNIT	MODEL	PROJECT NO.	ASSY. NO.

USED ON

REQ. ITEM	PART NO.	DESCRIPTION	SYMBOL
.064 THK.		THE TECHNICAL MATERIEL CORP.	
STOCK SIZE		MAMARONECK, NEW YORK	
Aluminum		PLATE, CONTACT, BOTTOM	
MATERIAL			
5052-H32		16/24/59	
TYPE & TEMPER	HEAT TREAT. SPEC.	DRAWN	CHECKED
S404 Iridite		G.G.	
FINISH & SPEC. NO.		ELEC. DES. APP.	MECH. DES. APP.
			MS-1481



NOTICE TO PERSONS RECEIVING THIS DRAWING

THE TECHNICAL MATERIEL CORPORATION claims proprietary right in the material disclosed hereon. This drawing is issued in confidence for engineering information only and may not be reproduced or used to manufacture anything shown hereon without permission from THE TECHNICAL MATERIEL CORPORATION to the user. This drawing is loaned for mutual assistance and is subject to recall at any time.

Property of:

THE TECHNICAL MATERIEL CORPORATION
 MAMARONECK, NEW YORK

- A- $\frac{13}{64}$ (.203) D. 4 Req.
- B- $\frac{5}{16}$ (.312) D. 7 Req. SEE NOTE
- C- $\frac{1}{8}$ (1.125) D. 11 Req.
- D- $\frac{17}{64} \times \frac{17}{32}$ SLOT 1 Req.

ISSUE	ITEM	CHANGED FROM	DATE	CH. NO.	DRAFTS	CHECKER	ENG. APP.
TOLERANCES			SCALE: $\frac{1}{2}$				
DEC. DIM. \pm			MAXIMUM ALLOWABLE TOLERANCES HAVE BEEN DETERMINED AND ANY DEVIATIONS WILL BE CAUSE FOR REJECTION. REMOVE ALL BURRS AND SHARP EDGES				
FRAC. DIM. $\pm \frac{1}{64}$							
ANGULAR DIM. $\pm 1^\circ$							

2	TER-5000-70	2A-1634	1-27-59
REQ. PER UNIT	MODEL	PROJECT NO.	DATE
USED ON			

REQ. ITEM	PART NO.	DESCRIPTION	SYMBOL
.064 THK.		THE TECHNICAL MATERIEL CORP. MAMARONECK, NEW YORK	
STOCK SIZE			
Aluminum		PLATE, CONTACT, TOP	
MATERIAL			
5052-H32		16/27/59	
TYPE & TEMPER	HEAT TREAT. SPEC.	DRAWN	CHECKED
6404 Iridite		G.G.	
FINISH & SPEC. NO.	ELEC. DES. APP.	MECH. DES. APP.	MS-1482

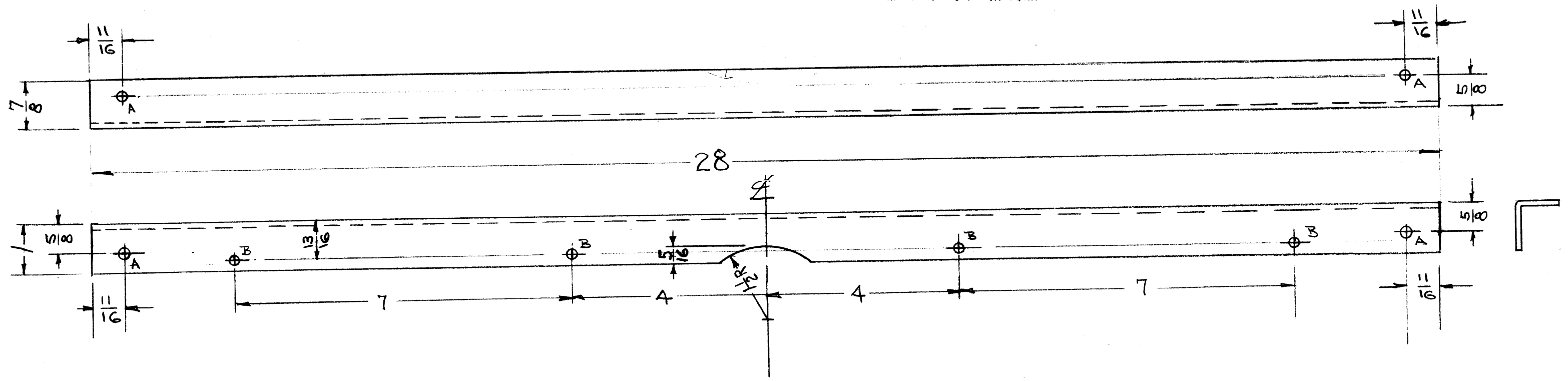
MS-1492 B

A - 13/64 D 4 HOLES
 B - 11/64 D 4 HOLES

NOTICE TO PERSONS RECEIVING THIS DRAWING

THE TECHNICAL MATERIEL CORPORATION claims proprietary right in the material disclosed hereon. This drawing is issued in confidence for engineering information only and may not be reproduced or used to manufacture anything shown hereon without permission from THE TECHNICAL MATERIEL CORPORATION to the user. This drawing is loaned for mutual assistance and is subject to recall at any time.

Property of:
 THE TECHNICAL MATERIEL CORPORATION
 MAMARONECK, NEW YORK



NOTE:
 USE MATERIAL THICKNESS FOR MAX. RADIUS ON ALL BENDS UNLESS OTHERWISE SPECIFIED.

ISSUE	ITEM	CHANGED FROM	DATE	CH. NO.	DRAFTS	CHECKER	ENG. APP.
B	2	ADDED SIDE VIEW	12-20-60	3762	M.A.F.	J.C.B.	[Signature]
A	1	1 1/2 R (Notch) x 5/16 OP. ADDED	5/18/59	10ZZ	J.C.B.	H6	[Signature]

TOLERANCES: DEC. DIM. ±, FRAC. DIM. ±, ANGULAR DIM. ±

SCALE: MAXIMUM ALLOWABLE TOLERANCES HAVE BEEN DETERMINED AND ANY DEVIATIONS WILL BE CAUSE FOR REJECTION. REMOVE ALL BURRS AND SHARP EDGES

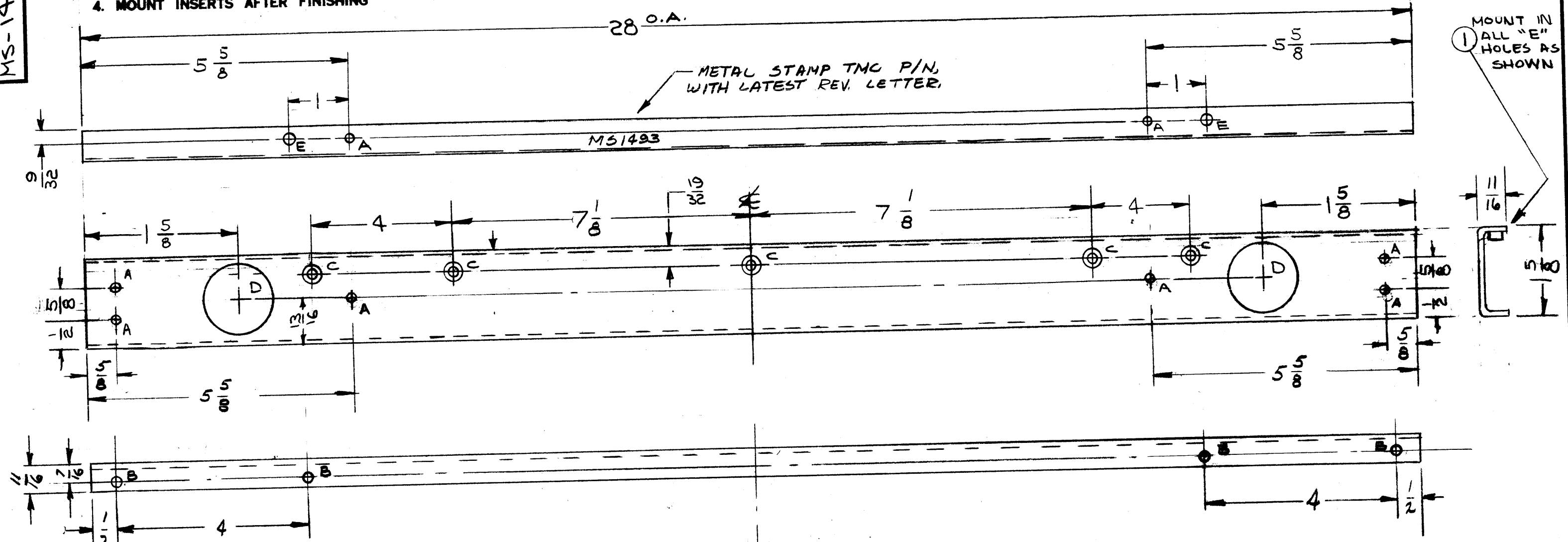
REQ. PER UNIT	1	MODEL	GPT-10K	PROJECT NO.	AX-104	ASS'Y. NO.		DATE	1-29-59
USED ON									

REQ. ITEM	PART NO.	DESCRIPTION	SYMBOL
1/8		THE TECHNICAL MATERIEL CORP. MAMARONECK, NEW YORK	
ALUMINUM		REAR BRACE, TOP	
5052-H32			
IRIDITE			
FINISH & SPEC. NO.		ELEC. DES. APP.	MECH. DES. APP.
		[Signature]	[Signature]
		MS-1492	B

MS-1493 C

UNLESS OTHERWISE SPECIFIED:

1. USE MATERIAL THICKNESS FOR MAXIMUM RADIUS ON ALL BENDS
2. ALL ANGULAR BENDS 90 DEGREES
3. REMOVE ALL BURRS AND SHARP EDGES
4. MOUNT INSERTS AFTER FINISHING



- A - 15/64 DIA - 8 REQ.
- B - 3/16 DIA - 4 REQ.
- C - .169 DIA, CSINK 82° TO .337 DIA. - 5 REQ.
- D - 1" DIA - 2 REQ.
- E - .191-.194 DIA - 2 REQ.

NOTICE TO PERSONS RECEIVING THIS DRAWING

THE TECHNICAL MATERIEL CORPORATION claims proprietary right in the material disclosed hereon. This drawing is issued in confidence for engineering information only and may not be reproduced or used to manufacture anything shown hereon without permission from THE TECHNICAL MATERIEL CORPORATION to the user. This drawing is loaned for mutual assistance and is subject to recall at any time.

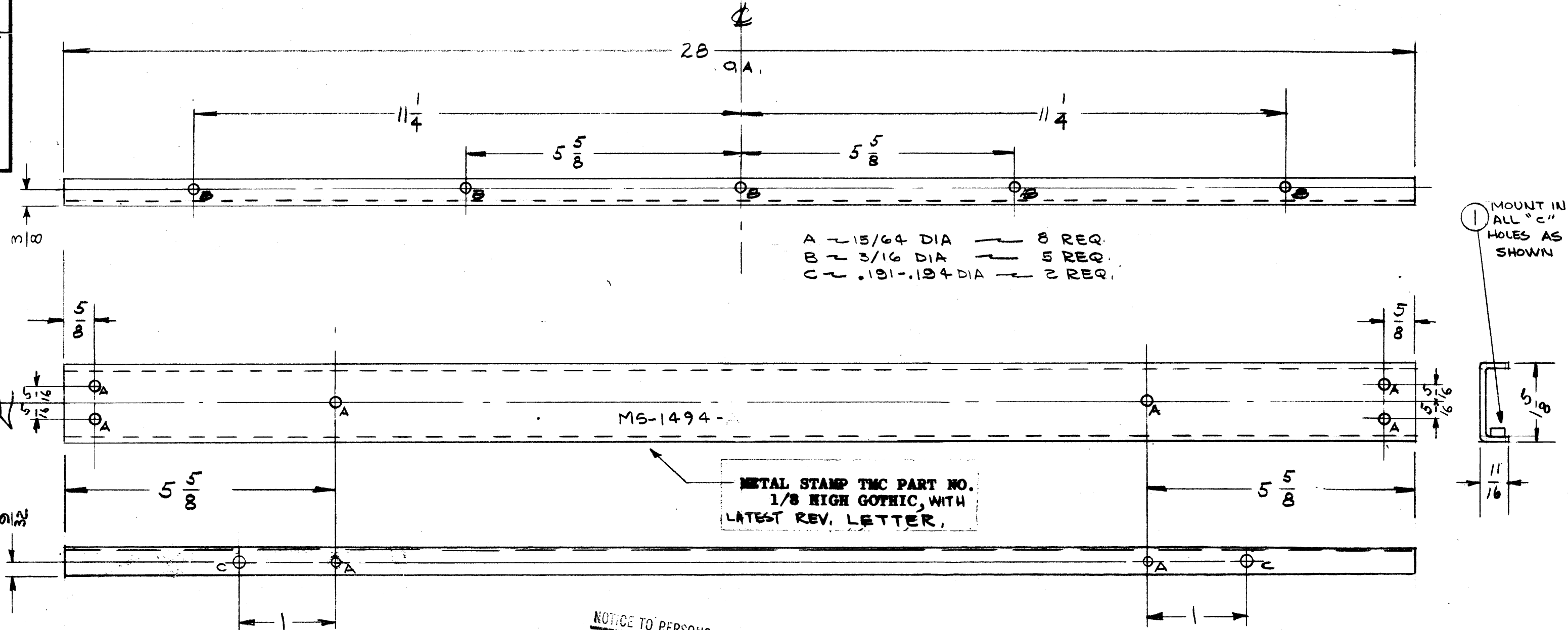
Property of:
THE TECHNICAL MATERIEL CORPORATION
MAMARONECK, NEW YORK

ISSUE	ITEM	CHAN ED FROM	DATE	CH. NO.	DRAFTS	CHECKER	ENG. APP.
C	1	COMPLETELY REVISED	3-22-65	13700	RU	JCB	ARB
B	1	DIM 19/32 WAS 27/32	12-20-60	3762	MUF	JCB	ARB
A	1	DIM 1 5/8 WAS 1 7/8 (SIDE VIEW)	11-19-60	3527	RU	JCB	ARB

REQ. PER UNIT	MODEL	PROJECT NO.	ASSY. N.	DATE
1	GPT-10K	AP126		3-5-65
1	GPT-10K	-AX-104		11-21-50

REQ.	ITEM	PART NO.	DESCRIPTION	SYMB L						
2	1	NT129-632-6	NUT, PLAIN, SPLINE	E						
1/8" THICK STOCK SIZE			THE TECHNICAL MATERIEL CORP. MAMARONECK, NEW YORK							
ALUMINUM MATERIAL			CHASSIS SUPPORT, REAR							
3052-H32			<table border="1"> <tr> <td>DRAWN</td> <td>CHECKED</td> <td>FINAL APPROVAL</td> </tr> <tr> <td>JCB</td> <td>JCB</td> <td>ARB</td> </tr> </table>	DRAWN	CHECKED	FINAL APPROVAL	JCB	JCB	ARB	
DRAWN	CHECKED	FINAL APPROVAL								
JCB	JCB	ARB								
IRIDITE FINISH & SPEC. NO.			MS-1493 C							

MS-1494 B.



A ~ 15/64 DIA ~ 8 REQ.
 B ~ 3/16 DIA ~ 5 REQ.
 C ~ .191-.194 DIA ~ 2 REQ.

METAL STAMP TMC PART NO.
 1/8 HIGH GOTHIC, WITH
 LATEST REV. LETTER.

1 MOUNT IN ALL "C" HOLES AS SHOWN

UNLESS OTHERWISE SPECIFIED:

1. USE MATERIAL THICKNESS FOR MAXIMUM RADIUS ON ALL BENDS
2. ALL ANGULAR BENDS 90 DEGREES
3. REMOVE ALL BURRS AND SHARP EDGES.
4. MOUNT INSERTS AFTER FINISHING

NOTICE TO PERSONS RECEIVING THIS DRAWING
 THE TECHNICAL MATERIEL CORPORATION claims
 proprietary right in the material disclosed hereon.
 This drawing is issued in confidence for engineering
 information only and may not be reproduced or used
 to manufacture anything shown hereon without per-
 mission from THE TECHNICAL MATERIEL CORPORA-
 tion to the user. This drawing is loaned for mutual
 convenience and is subject to recall at any time.

Property of:
 THE TECHNICAL MATERIEL CORPORATION
 MAMARONECK, NEW YORK

REF: MS1473 (FRONT PANEL)

IS USE ITEM	CHANGED FROM	DATE	CH. NO.	DRAFTS	CHECKER	ENG. APP.
B	1 COMPLETELY REVISED	3-22-65	13700	<i>Phan</i>	<i>CLS</i>	<i>[Signature]</i>
A	2 DIM 3/8 WAS 7/16 1 NOTES UPDATED	12/23/63	10637	<i>GL</i>	<i>File</i>	<i>[Signature]</i>

TOLERANCES		SCALE: DO NOT SCALE	
DEC. DIM. ±		MAXIMUM ALLOWABLE TOLERANCES HAVE BEEN DETERMINED AND ANY DEVIATIONS WILL BE CAUSE FOR REJECTION. REMOVE ALL BURRS AND SHARP EDGES	
FRAC. DIM. ±			
ANGULAR DIM. ±			

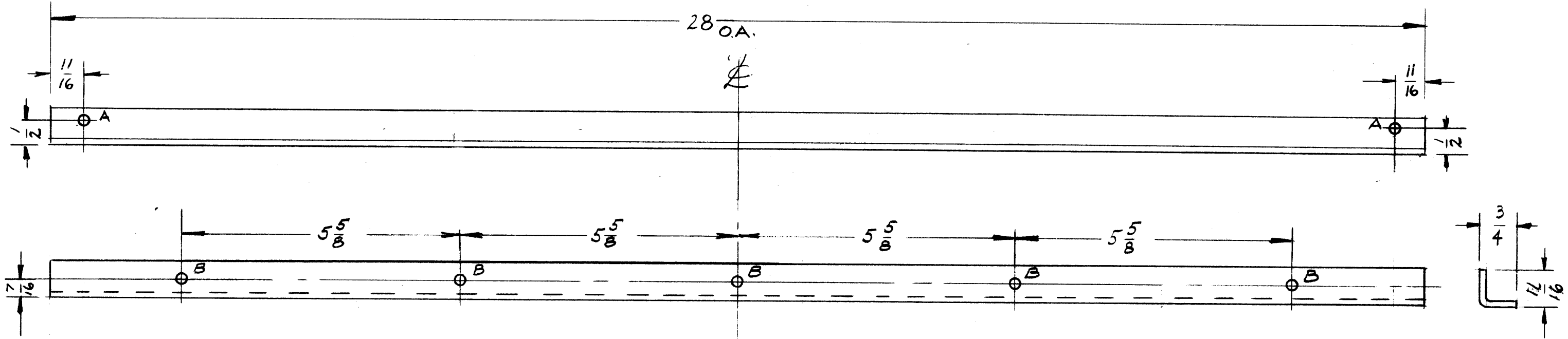
REQ. PER UNIT	MODEL	PROJECT NO.	ASSY. NO.	DATE
1	GPT-10K	AP126		3-5-65
1	GPT-10K	AX-104		11-21-58

REQ. ITEM	PART NO.	DESCRIPTION	SYMBOL
2	1	NT129-632-G NUT, PLAIN, SPLINE	C
1/8		THE TECHNICAL MATERIEL CORP. MAMARONECK, NEW YORK	
ALUMINUM		CHASSIS SUPPORT, FRONT	
5052-H32			
IRIDITE			
FINISH & SPEC. NO.		ELEC. DES. APP. MECH. DES. APP.	

MS-1495B

HOLE S
 A - (203) $\frac{13}{64}$
 B - (187) $\frac{3}{16}$

REQ'D.
 2
 5



NOTICE TO PERSONS RECEIVING THIS DRAWING
 THE TECHNICAL MATERIEL CORPORATION claims proprietary right in the material disclosed hereon. This drawing is issued in confidence for engineering information only and may not be reproduced or used to manufacture anything shown hereon without permission from THE TECHNICAL MATERIEL CORPORATION to the user. This drawing is loaned for mutual assistance and is subject to recall at any time.

Property of:
 THE TECHNICAL MATERIEL CORPORATION
 MAMARONECK, NEW YORK

REF: MS-1473 FRONT PANEL

ISSUE	ITEM	CHANGED FROM	DATE	CH. N.	DRAFTS	CHECKER	ENG. APP.
B	1	B HOLES WERE 8 REQ.	2-6-62	6319	LL	<i>[Signature]</i>	<i>[Signature]</i>
A	1	MATERIAL WAS STEEL (ERROR)	8/16/60	2803	RU	<i>[Signature]</i>	<i>[Signature]</i>

REQ.	ITEM	PART NO.	DESCRIPTION	SYMBOL
			$\frac{1}{8}$ THICK STOCK SIZE	
			ALUMINUM	
			MATERIAL	
			TYPE & TEMPER	
			HEATTREAT. SPEC.	
			DRAWN	
			CHECKED	
			FINAL APPROVAL	
			IRIDITE	
			FINI H	
			PEC. NO.	
			ELEC. DE . APP	
			MECH. DES. APP	

REQ. PER UNIT	MODEL	PROJECT NO.	ASSY. NO.	DATE
1	GPT-10K	AX-104		11-21-50

USED ON

MS-1495B