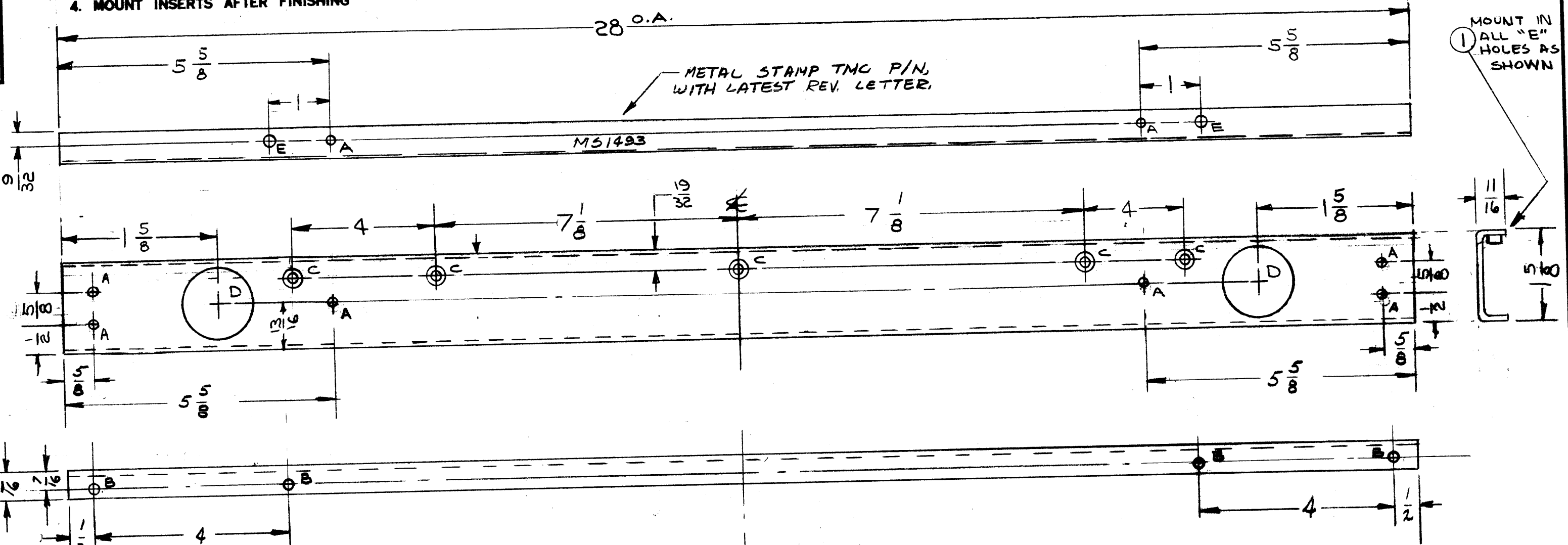


MS-1493 C

UNLESS OTHERWISE SPECIFIED:

1. USE MATERIAL THICKNESS FOR MAXIMUM RADIUS ON ALL BENDS
2. ALL ANGULAR BENDS 90 DEGREES
3. REMOVE ALL BURRS AND SHARP EDGES
4. MOUNT INSERTS AFTER FINISHING



- A - 15/64 DIA - 8 REQ.
- B - 3/16 DIA - 4 REQ.
- C - .169 DIA, CSINK 82° TO .337 DIA. - 5 REQ.
- D - 1" DIA - 2 REQ.
- E - .191-.194 DIA - 2 REQ.

NOTICE TO PERSONS RECEIVING THIS DRAWING

THE TECHNICAL MATERIEL CORPORATION claims proprietary right in the material disclosed hereon. This drawing is issued in confidence for engineering information only and may not be reproduced or used to manufacture anything shown hereon without permission from THE TECHNICAL MATERIEL CORPORATION to the user. This drawing is loaned for mutual assistance and is subject to recall at any time.

Property of:

THE TECHNICAL MATERIEL CORPORATION  
MAMARONECK, NEW YORK

ISSUE	ITEM	CHAN ED FROM	DATE	CH. NO.	DRAFTS	CHECKER	ENG. APP.
C	1	COMPLETELY REVISED	3-22-65	13700	RU	JCB	ARB
B	1	DIM 19/32 WAS 27/32	12-20-60	3762	MUF	JCB	ARB
A	1	DIM 15/8 WAS 17/8 (SIDE VIEW)	11-18-60	3527	RU	JCB	ARB

DEC. DIM. ±	FRAC. DIM. ±	ANGULAR DIM. ±

REQ. PER UNIT	MODEL	PROJECT NO.	ASSY. N.	DATE
1	GPT-10K	AP126		3-5-65
1	GPT-10K	-AX-104		11-21-50

REQ.	ITEM	PART NO.	DESCRIPTION	SYMB L
2	1	NT129-632-6	NUT, PLAIN, SPLINE	E
1/8" THICK STOCK SIZE			THE TECHNICAL MATERIEL CORP. MAMARONECK, NEW YORK	
ALUMINUM			CHASSIS SUPPORT, REAR	
MATERIAL				
3052-H32			DRAWN	CHECKED
TYPE & TEMPER HEATTREAT. SPEC.			FINAL APPROVAL	
IRIDITE			MS-1493 C	
FINISH & SPEC. NO.			ELEC. DES. APP. MECH. DES. APP.	