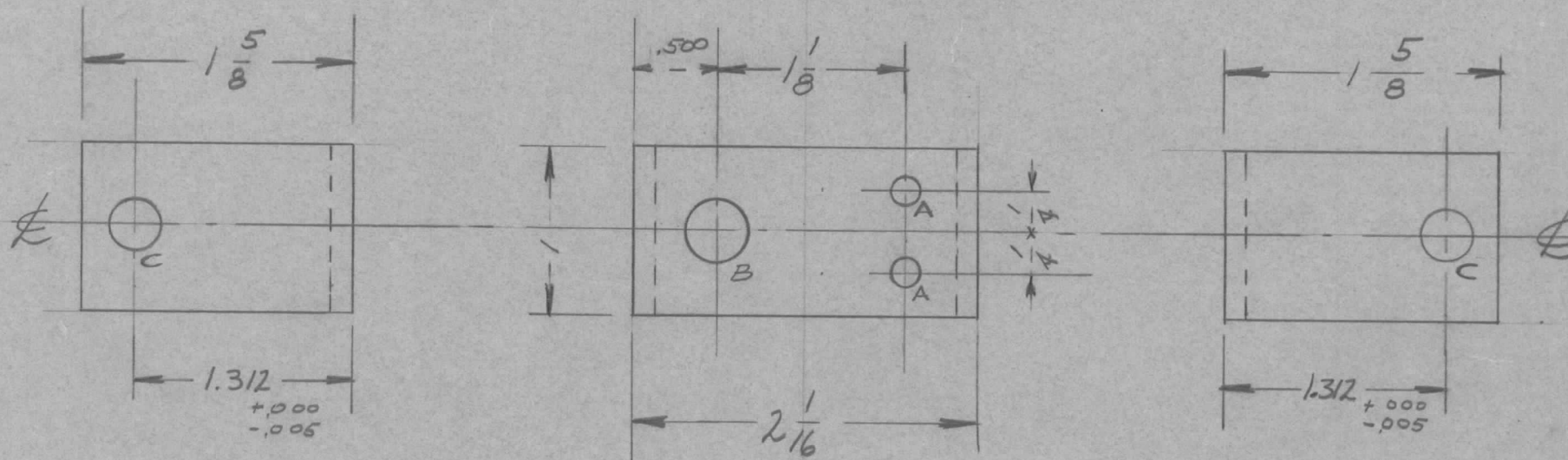


REQ. PER UNIT	USED ON			MS-1491	A
	MODEL	ASS'Y. NO.	DATE		
2	GPT-10K	AX-104	1-26-59		



NOTE:  
 ALL BENDS  $90^\circ \pm 1/2^\circ$   
 ALL BENDS  $1/8$  R

HOLES	REQ'D.
A - $1/64$ DIA.	2
B - $3/8$ DIA.	1
C - $5/16$ DIA.	2 (FOR BB-117-6)

REQ.	ITEM	PART NO.	DESCRIPTION				SYMBOL	
			THE TECHNICAL MATERIEL CORP. MAMARONECK, NEW YORK					
			LATCH BRACKET					
A	1		ALL BENDS $1/8$ R ADDED	4-4-60	1984	mf	file	ahh
ISSUE	ITEM	CHANGED FROM	DATE	CH. NO.	DRAFTS	CHECKER	ENG. APP.	
TOLERANCES			SCALE:					
DEC. DIM. $\pm$		$\pm .000$	MAXIMUM ALLOWABLE TOLERANCES HAVE BEEN DETERMINED AND ANY DEVIATIONS WILL BE CAUSE FOR REJECTION. REMOVE ALL BURRS AND SHARP EDGES					
FRAC. DIM. $\pm$		$-.015$						
ANGULAR DIM. $\pm$		$1/2^\circ$						
			5052-H32	IRIDITE		file	RLN	MS-1491
			TYPE & TEMPER	HEAT TREAT. SPEC.	DRAWN	CHECKED	FINAL APPROVAL	
			FINISH & SPEC. NO.		ELEC. DES. APP	MECH. DES. APP	A	