

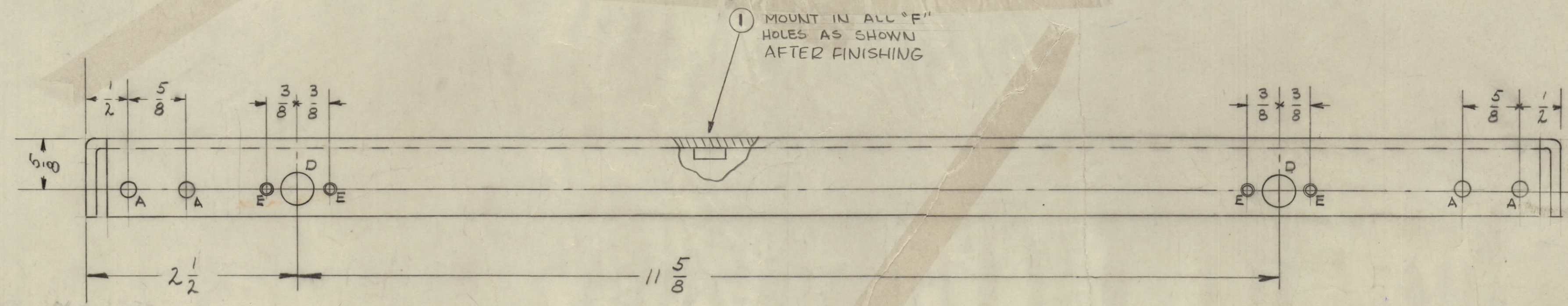
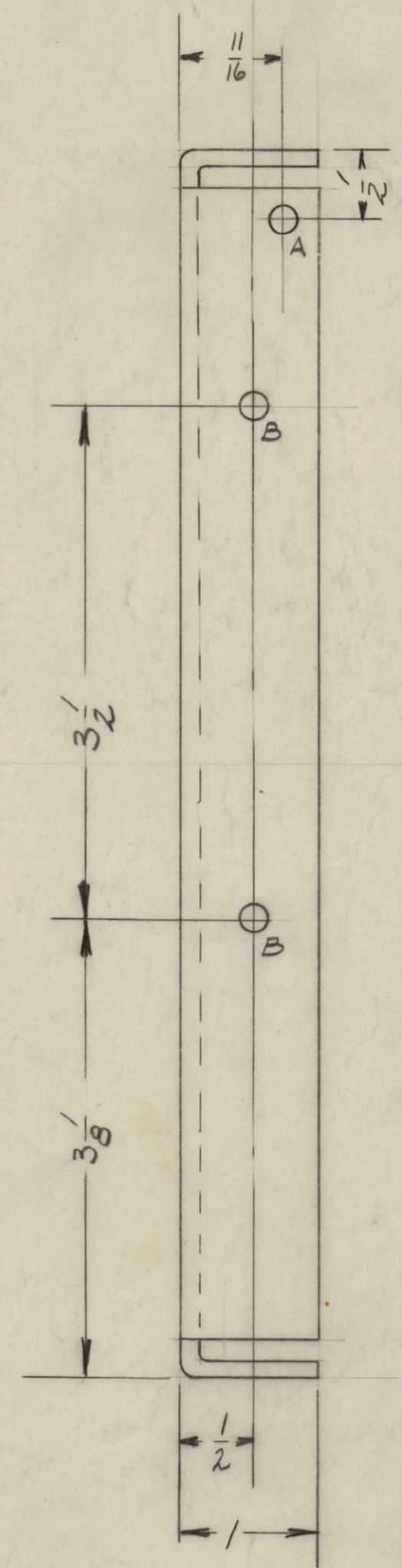
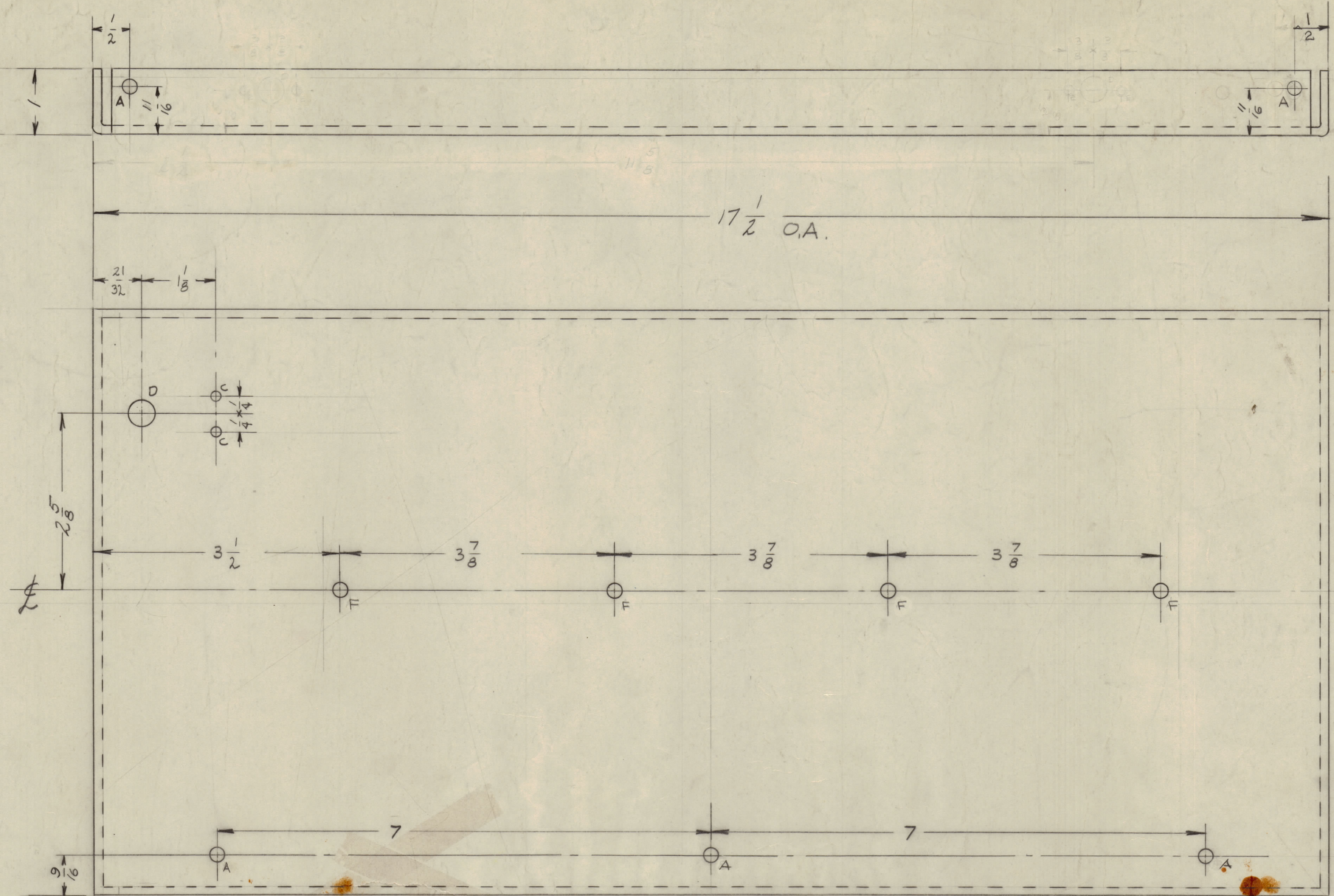
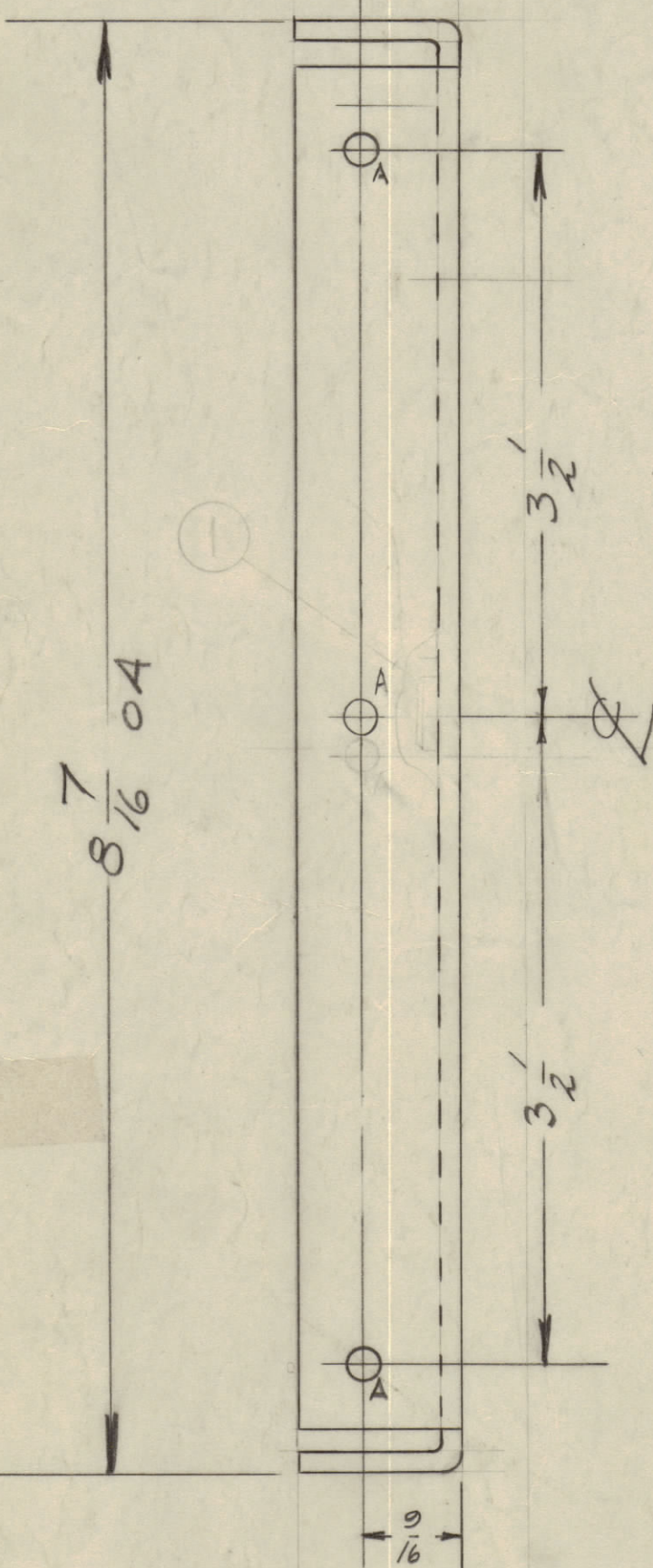
IF IT IS FOUND DESIRABLE TO CHANGE ANY TOLERANCE OR OTHER DETAIL SPECIFIED ON THIS DRAWING NOTIFY THE PURCHASER PROMPTLY.
 MAXIMUM ALLOWABLE TOLERANCES HAVE BEEN DETERMINED AND DEVIATIONS WILL BE CAUSE FOR REJECTION. REMOVE ALL BURRS AND SHARP EDGES

NOTICE TO PERSONS RECEIVING THIS DRAWING

THE TECHNICAL MATERIEL CORPORATION claims proprietary right in the material disclosed hereon. This drawing is issued in confidence for engineering information only and may not be reproduced or used to manufacture anything shown hereon without permission from THE TECHNICAL MATERIEL CORPORATION to the user. This drawing is loaned for mutual assistance and is subject to recall at any time.

Property of:
 THE TECHNICAL MATERIEL CORPORATION
 MAMARONECK, NEW YORK

HOLES	REQ'D.
A - 13/64 (.203)	13
B - 1/64 (.0156)	2
C - 6/32 CLEARANCE	2
D - 3/8 (.375)	3
E - DRILL + C'SINK FOR 3/16	4
F - .251 - .254 DIA	4



1 MOUNT IN ALL "F" HOLES AS SHOWN AFTER FINISHING

NOTE:
 MS-1488 - 1 RIGHT SIDE PLATE AS SHOWN
 MS-1488 - 2 LEFT SIDE PLATE OPPOSITE HAND.

ISSUE	ITEM	CHANGED FROM	DATE	CN. NO.	DRAFTS	CHECKER	ENG. APP.
C	2	(4) "F" HOLES WERE "A" HOLES	3-22-65	13	00		
	1	IT (1) & NEW MODEL ADDED	6-5				
B	1	DELETED 2 "D" HOLES & 4 "E" HOLES (TOP VIEW)	4-8-63	806			
A	2	17 "A" HOLES WERE 18 (MISCONT)	11-23-59	1586			
	1	HOLES CORRECTED TO SHOW CLEARANCE VIEWS SHOWN (TOP & BOTTOM)					

ALL OTHERS	DEC. DIM. ±	FRAC. DIM. ±	ANGULAR DIM. ±	SCALE:	DRILL PUNCH, COMMERCIAL STOCK SIZES AND MANUFACTURERS TOLERANCES ARE NOT INCLUDED.
		1/64			

REACH	GPT-10K	API2G	3-5-65
REQ PER UNIT	MODEL	PROJECT NO.	DATE
	AX-104		11-21-59

REQ. ITEM	PART NO.	DESCRIPTION	SYMBOL
4	1	UT129-1032-6 NUT, PLAIN, SPLINE	F
1/8 THICK STOCK SIZE			
ALUMINUM			
5052-H32			
TYPE & TEMPER			
HEAT TREAT. SPEC.			
IRIDITE			
FINISH & SPEC. NO.			

THE TECHNICAL MATERIEL CORP.
 MAMARONECK, NEW YORK
 DRIVER DRAW
 DRAWN: [Signature]
 ELEC. DES. APP. [Signature]
 MECH. DES. APP. [Signature]
 FINAL APPROVAL: [Signature]
 MS-1488 C