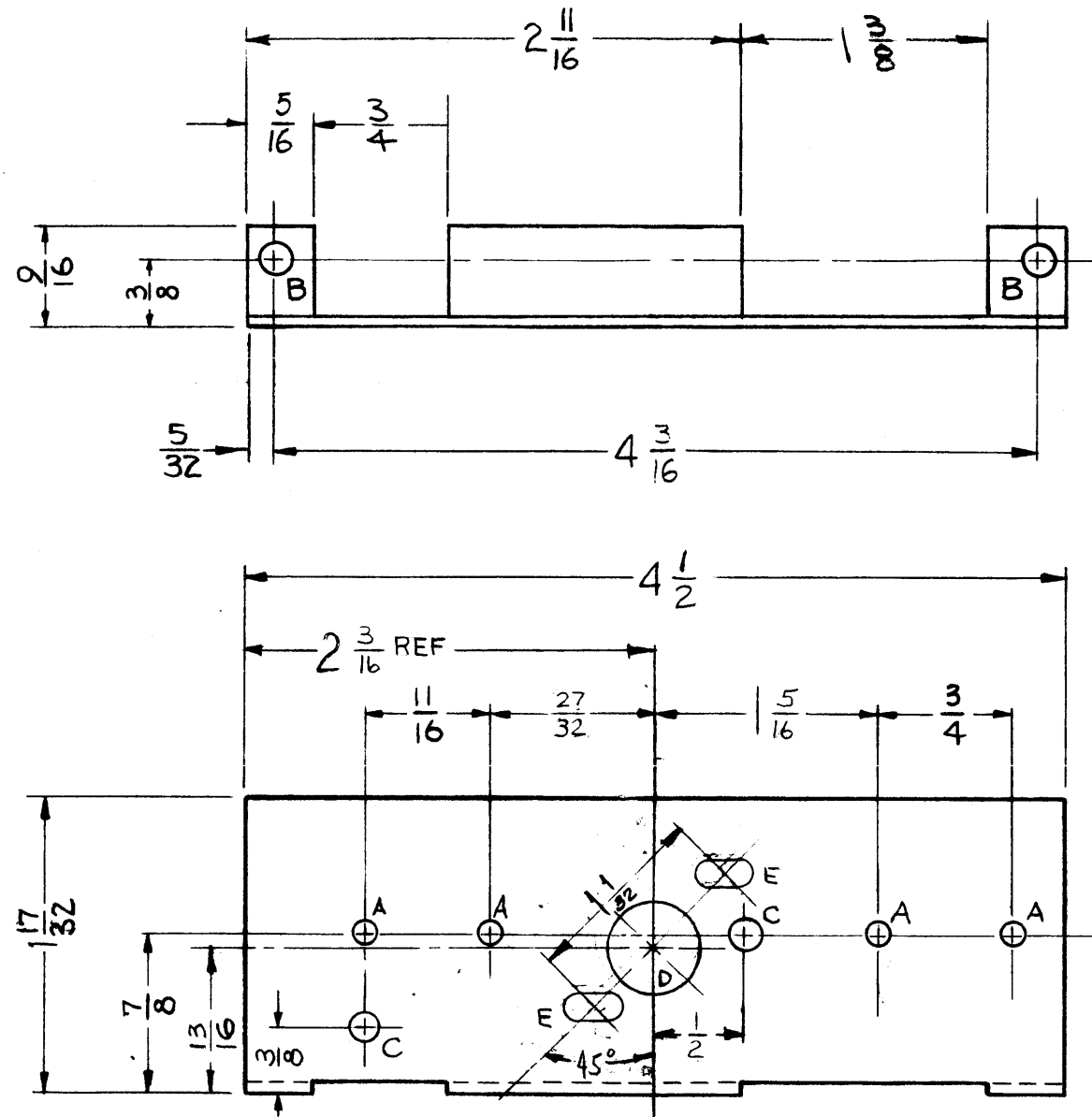


MS-1441 G



- A - 1/8 (.125) DIA.
- B - 11/64 (.171) DIA.
- C - .161 DIA.
- D - 1/2 (.500) DIA.
- E - 9/64 X 9/32 SLOTS

- 4 REQ'D.
- 2 "
- 2 "
- 1 "
- 2 REQ

NOT TO BE REPRODUCED RECEIVING THIS DRAWING

THE TECHNICAL MATERIEL CORPORATION claims proprietary right in the material disclosed hereon. This drawing is issued in confidence for engineering information only and may not be reproduced or used to manufacture anything shown hereon without permission from THE TECHNICAL MATERIEL CORPORATION to the user. This drawing is loaned for mutual assistance and is subject to recall at any time.

Property of:  
THE TECHNICAL MATERIEL CORPORATION  
MAMARONECK, NEW YORK

G	2	DIM CLASSED CHANGED	7-7-60	6353	GS		
F	3	DIM 4-1/2 WAS 4-9/16	6-26-61	5123	DLG	RU	
E	1	"D" HOLE WAS 5/8	5-18-60	2287	CM		
D	1	45° added	12-1-59	1623	DM		
C	1	Finish WAS S101, S-107	6/23/59				
B	1	"D" hole Relocated	3/20/59		DR R116		
A	1	hole added	2/4/59	7-71	J.C.B.		

REQ. PER UNIT	1	MODEL	RFC-1	PROJECT NO.	PAL-1K	A SY. NO.		DATE	11-22-60
	1		RFB-10		GPT-10K				6-23-59
									12-18-58

TOLERANCES	SCALE:	USED ON
DEC. DIM. ±	MAXIMUM ALLOWABLE TOLERANCES HAVE BEEN DETERMINED AND ANY DEVIATIONS WILL BE CAUSE FOR REJECTION. REMOVE ALL BURRS AND SHARP EDGES	
FRAC. DIM. ± 1/64		
ANGULAR DIM. ±		

REQ.	ITEM	PART NO.	DESCRIPTION	SYMB L
		.064	THE TECHNICAL MATERIEL CORP.	
		STOCK SIZE	MAMARONECK, NEW YORK	
		ALUMINUM	BRACKET, SWITCH MOUNTING	
		MATERIAL		
		5052-H32	J.C.BIELE	
		TYPE & TEMPER	CHECKED	
		HEAT TREAT. SPEC.	FINAL APPROV	
		S404 IRIDITE		MS-1441 G
		FINISH & PEC. NO.	ELEC. DES. APP	