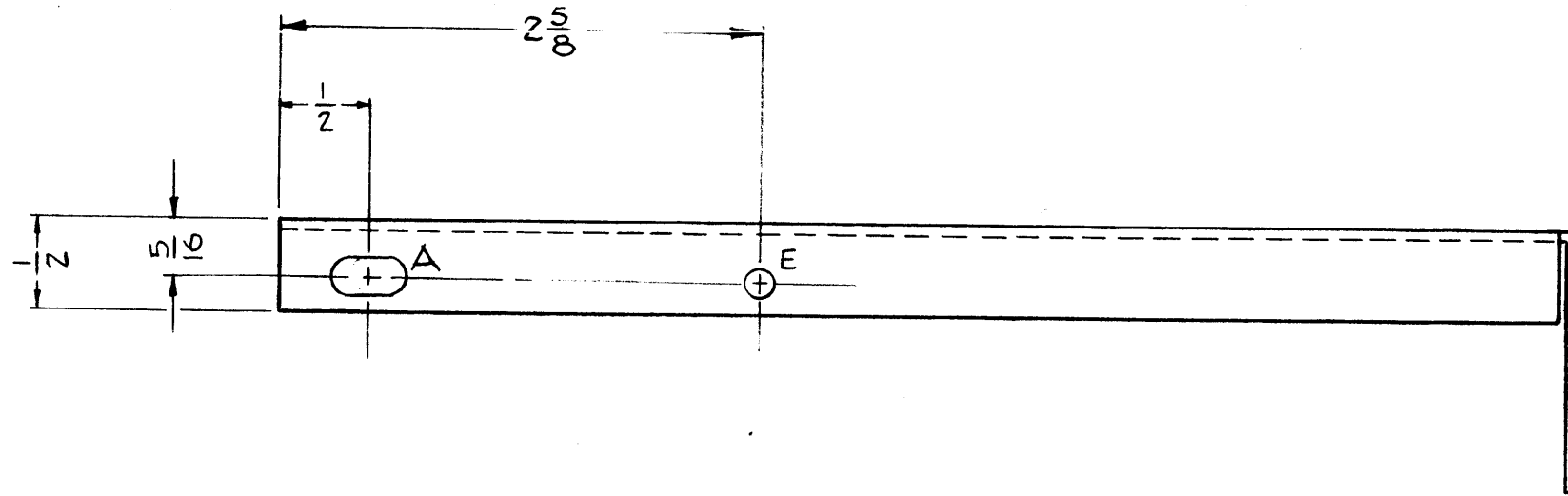
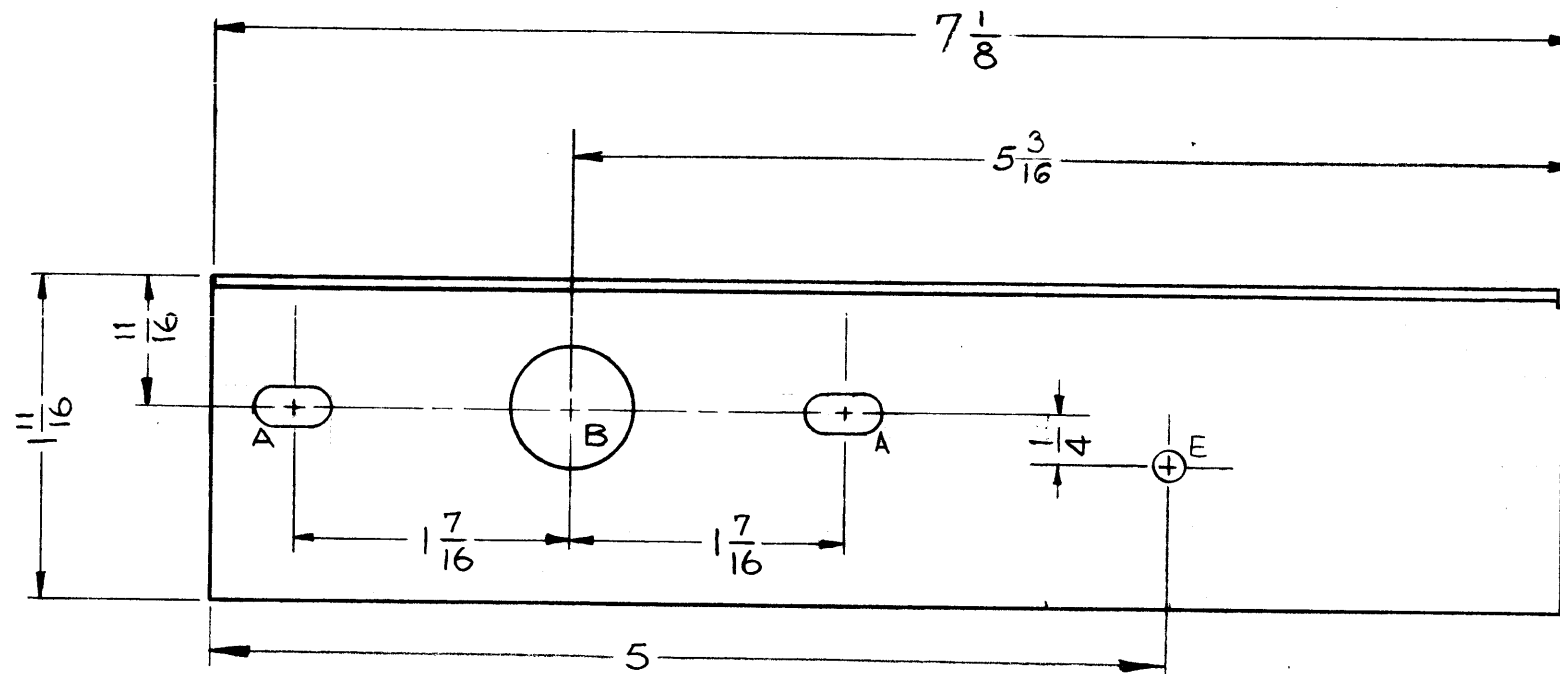
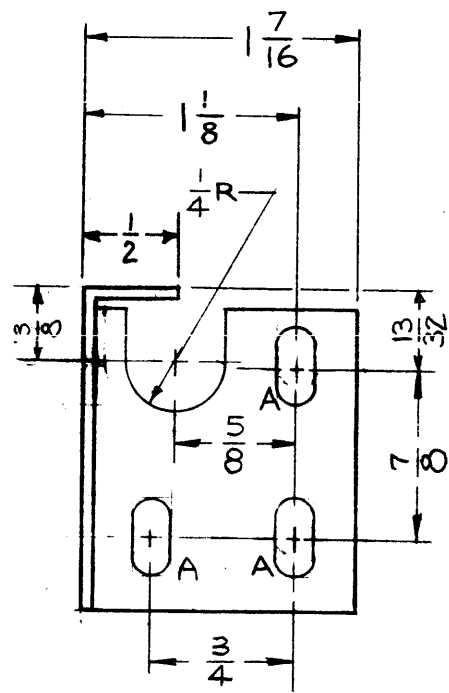


MS-1438 E



A ~ 13/64 x 13/32 SLOTS 6 REQ'D.
 B ~ 5/8 (.625) DIA. 1 "
 E ~ 5/32 (.156) DIA. 2 "



NOTICE TO PERSONS RECEIVING THIS DRAWING
 THE TECHNICAL MATERIEL CORPORATION claims proprietary right in the material disclosed hereon. This drawing is issued in confidence for engineering information only and may not be reproduced or used to manufacture anything shown hereon without permission from THE TECHNICAL MATERIEL CORPORATION to the user. This drawing is loaned for mutual assistance and is subject to recall at any time.
 Property of:
 THE TECHNICAL MATERIEL CORPORATION
 MAMARONECK, NEW YORK

E	1	5 5/16 WAS 5 5/32 (CENTER)	12-19-60	3761	RU		
D	1	CHG. C HOLE TO V2 NOTCH	5-17-60	2288	CS		
C	1	DIM. CORRECTED 3 SLOTS 2 HOLES	12-1-59	1624	DM		
B	1	FINISH WAS 3101	6/23/59				
A	1	ADDED 4 A-SLOTS " " " " " " " " " "	3/20/59		DRUID		

ISSUE		CHANGED FROM	DATE	CH. NO.	DRAFTS	CHECKER	ENG. APP.
TOLERANCES		SCALE: 1" = 1"					
DEC. DIM. ±		MAXIMUM ALLOWABLE TOLERANCES HAVE BEEN DETERMINED AND ANY DEVIATIONS WILL BE CAUSE FOR REJECTION. REMOVE ALL BURRS AND SHARP ED ES					
FRAC. DIM. ± 1/64							
ANGULAR DIM. ±							

1	RFC-1			12-19-60
1	RFD-1	PAL-1K		6-23-59
1	RFB-1	GPI-10K		12-4-58
REQ. PER UNIT	MODEL	PROJECT NO.	ASSY. NO.	DATE
USED ON				

REQ.	ITEM	PART NO.	DESCRIPTION		SYMBOL
		.081	THE TECHNICAL MATERIEL CORP.		
		STOCK SIZE	MAMARONECK, NEW YORK		
		ALUMINUM	BRACKET, FRONT SW		
		MATERIAL			
		5052-H32	J.C. BIELE		
		TYPE & TEMPER	DRAWN	CHECKED	FINAL APPROVAL
		S404 IRIDITE			
		FINISH & SPEC. NO.	LEG. DES. APP. MECH. DES. APP.		
					MS-1438 E