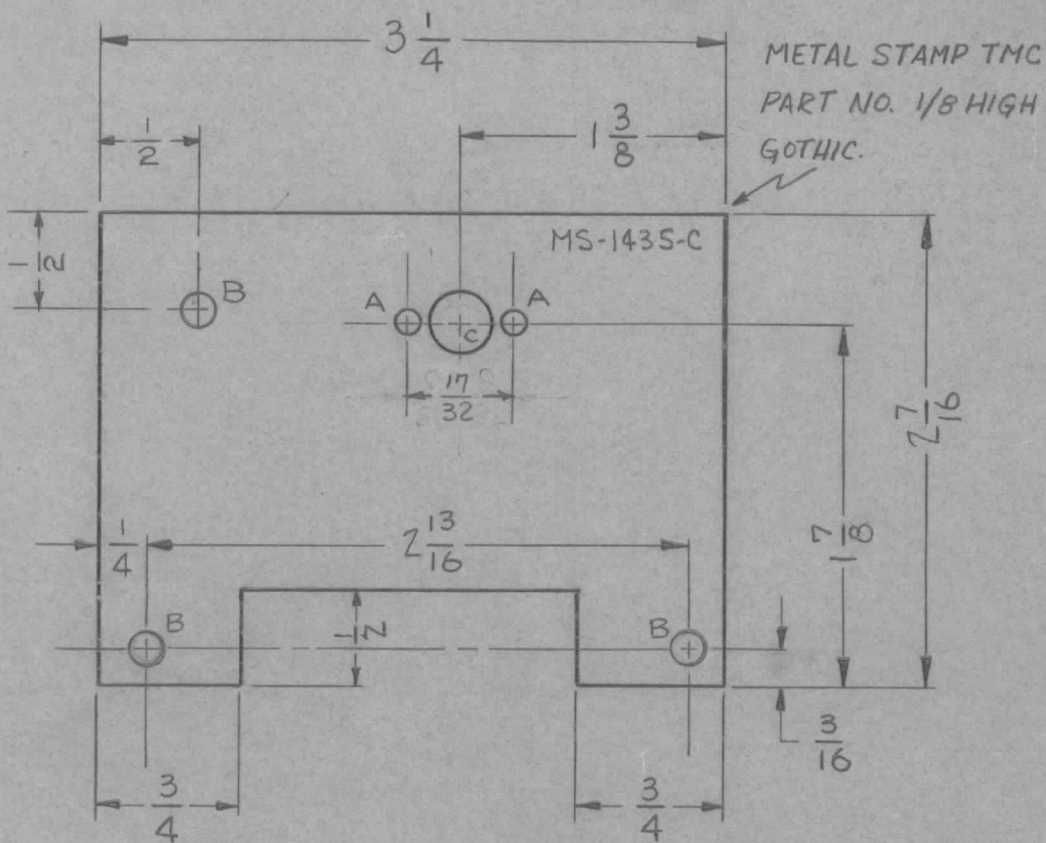


REQ. PER UNIT	USED ON		
	MODEL	ASS'Y. NO.	DATE
1	RFB-1	GPT-10K	12-10-58
1	RFD-1	PAL-1K	6-23-59
	RFC-1		11-22-60

MS-1435 C



- A - 1/8 (.125) DIA. 2 REQ'D.
- B - 11/64 (.171) DIA. 3 REQ'D.
- C - 5/16 (.312) DIA. 1 REQ'D.

ISSUE	ITEM	CHANGED FROM	DATE	CH. NO.	DRAFTS	CHECKER	ENG. APP.	REQ. ITEM	PART NO.	DESCRIPTION	SYMBOL		
C	1	17/32 DIM WAS 9/16	10-12-62	7426	JCB	JCB	JCB			THE TECHNICAL MATERIEL CORP. MAMARONECK, NEW YORK BRACKET, TRIMMER	C		
B	1	(1)" B HOLE ADDED	5-18-60	2287	JCB	JCB	JCB		.064				
A	1	FINISH WAS 3101, 3109	6/23/59		JCB	JCB	JCB		ALUMINUM				
TOLERANCES								MATERIAL					
DEC. DIM. ±								5052-H32		J.C. BIELE	JCB	ARB	
FRAC. DIM. ± 1/64								TYPE & TEMPER		DRAWN	CHECKED	FINAL APPROVAL	
ANGULAR DIM. ±								S404 IRIDITE			JCB		MS-1435 C
SCALE:								HEAT TREAT. SPEC.		ELEC. DES. APP	MECH. DES. APP		
MAXIMUM ALLOWABLE TOLERANCES HAVE BEEN DETERMINED AND ANY DEVIATIONS WILL BE CAUSE FOR REJECTION: REMOVE ALL BURRS AND SHARP EDGES								FINISH & SPEC. NO.					