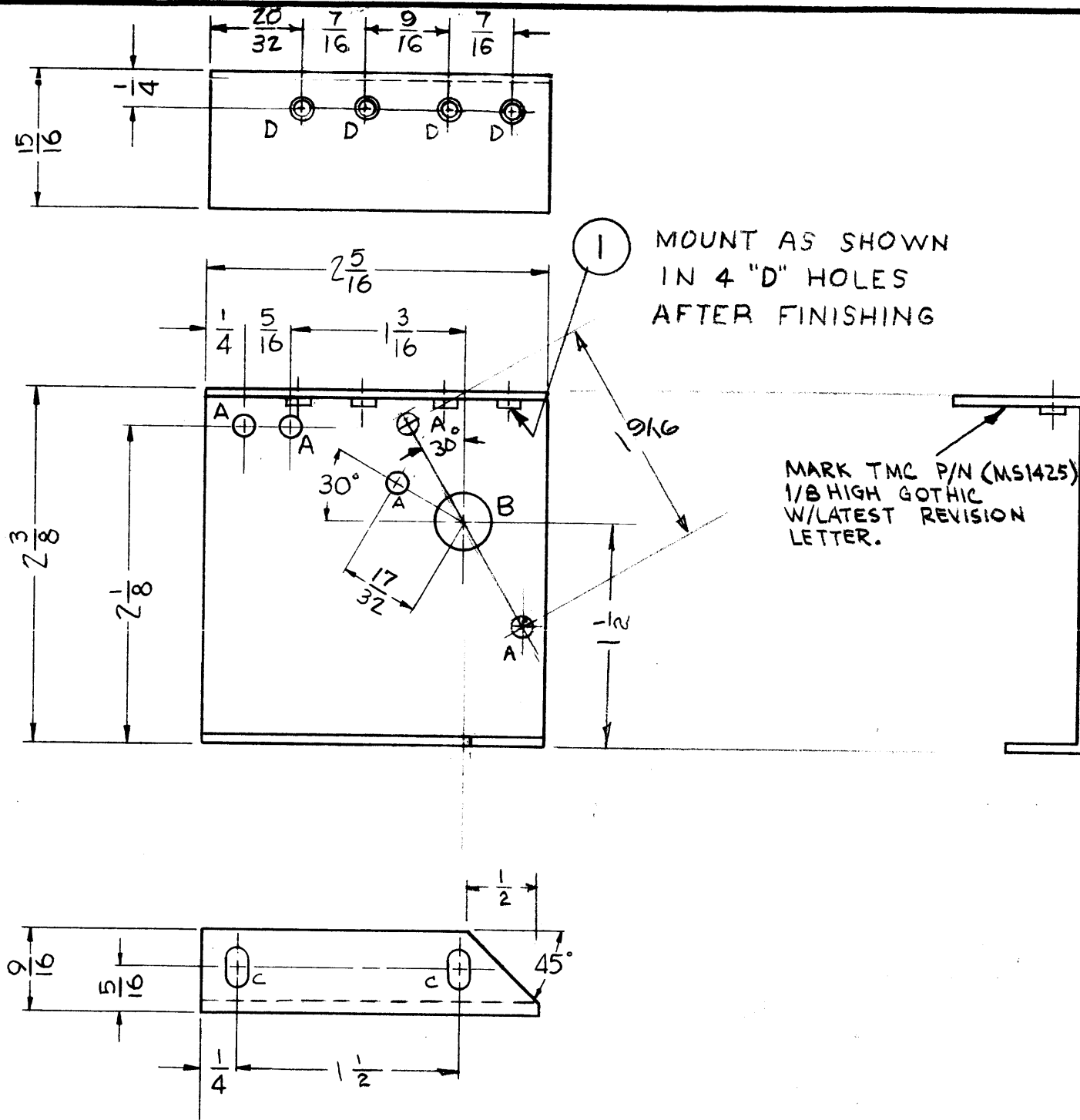


MS 1425 B



A ~ 9/64 (.140) DIA.
 B ~ 3/8 (.375) DIA.
 C ~ 9/64 X 9/32 SLOTS
 D ~ .161 ^{+0.003}/_{-0.000}

5 HOLES REQ'D
 1 HOLE REQ'D
 2 SLOTS REQ'D
 4 HOLES REQ'D

NOTICE TO PERSONS RECEIVING THIS DRAWING
 THE TECHNICAL MATERIEL CORPORATION claims proprietary right in the material disclosed hereon. This drawing is issued in confidence for engineering information only and may not be reproduced or used to manufacture anything shown hereon without permission from THE TECHNICAL MATERIEL CORPORATION to the user. This drawing is loaned for mutual assistance and is subject to recall at any time.

Property of:
 THE TECHNICAL MATERIEL CORPORATION
 MAMARONECK, NEW YORK

REF LD 469

IS USE	ITEM	CHAN ED FROM	DATE	CH. NO.	DRAFTS	CHECKER	ENG. APP.
	C	ADD 'D' & ITEM 1	11/17/70	20067	R7	W	EMN
	B	ADD MARKING NOTE	11/15/66	17262	RME	W	EMN
	A	1 S-404 WAS S-101	12/19/59	1001	AB		EMN

TOLERANCES		SCALE:	
DEC. DIM. ±		1	RTF-2
FRAC. DIM. ±			MULT
ANGULAR DIM. ±			

MAXIMUM ALL WABLE TOLERANCES HAVE BEEN DETERMINED AND ANY DEVIATIONS WILL BE CAUSE FOR REJECTION: REMOVE ALL BURRS AND SHARP ED ES

REQ. PER UNIT	MODEL	PROJECT NO.	ASSY. NO.	DATE
				11-26-58

USED ON

REQ.	ITEM	PART NO.	DESCRIPTION	SYMBOL
4	1	NT129-440-4	NUT, ROUND, SWAGE TYPY	
		.064	STOCK SIZE	
		ALUMINUM	MATERIAL	
		5052-H32	TYPE & TEMPER	
			HEAT TREAT. SPEC.	
		5404 YEL IRIDITE	FINISH & PEC. NO.	
			THE TECHNICAL MATERIEL CORP. MAMARONECK, NEW YORK	
			BRACKET, BAND SW, FRONT	
		J. C. BIELE	DRAWN	
			CHECKED	
			FINAL APPROVAL	
			REC. DES. APP.	
			TECH. DES. APP.	

MS 1425 C