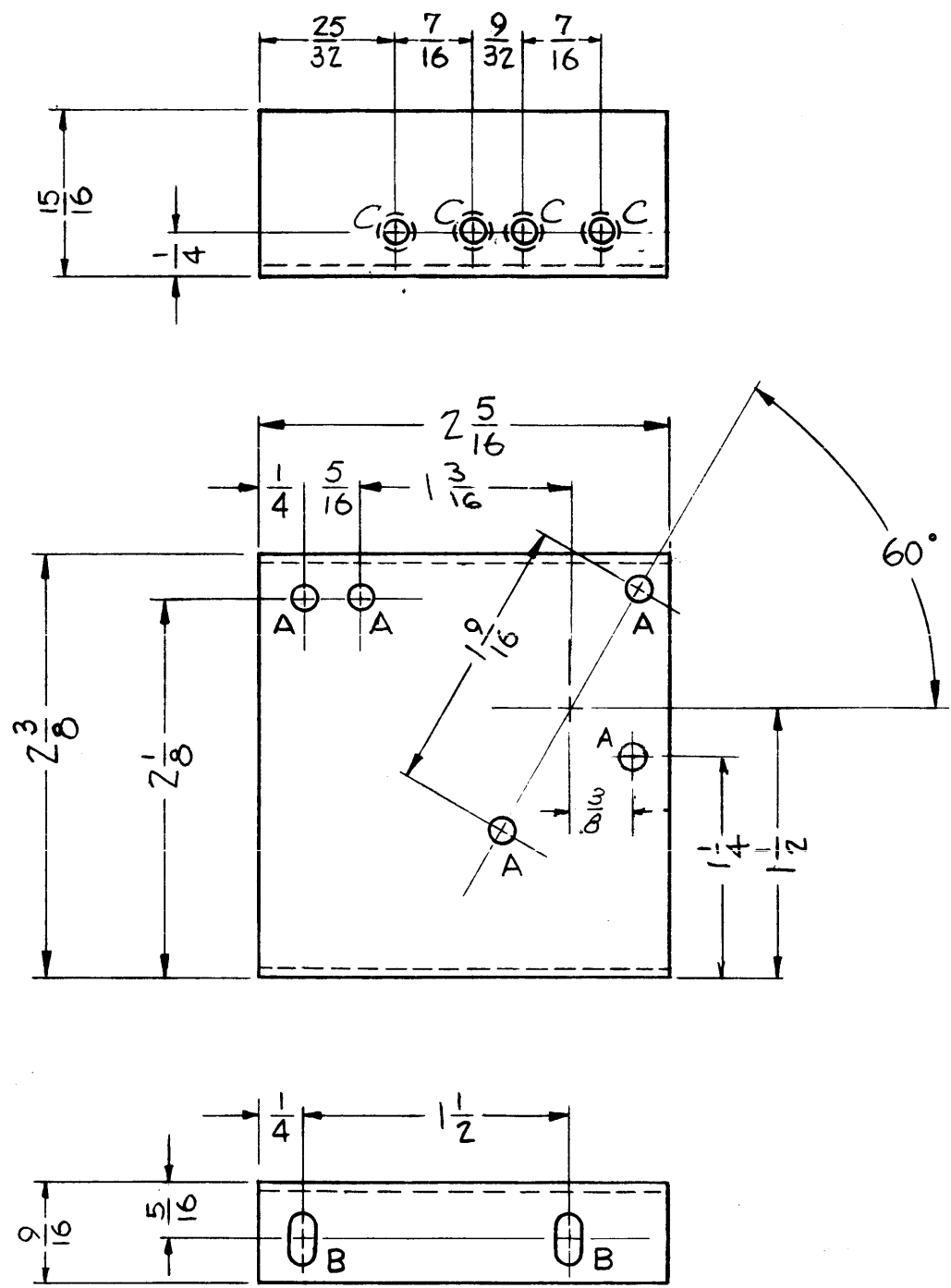
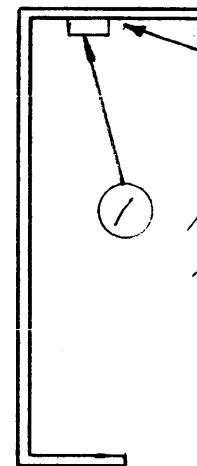


MS 1418 D



A ~ 9/64 (140) DIA.
 B ~ 9/64 X 9/32 SLOTS
 C ~ .161 ± .003

5 HOLES REQ'D.
 2 SLOTS REQ'D.
 4 HOLES REQ.



MARK TMC P/N (MS1418)
 1/8 HIGH GOTHIC W/LATEST
 REVISION LETTER.

MT. AS SHOWN IN 4 'C' HOLES
 AFTER FINISHING

NOTE TO PERSONS RECEIVING THIS DRAWING

THE TECHNICAL MATERIEL CORPORATION claims proprietary right in the material disclosed hereon. This drawing is issued in confidence for engineering information only and may not be reproduced or used to manufacture anything shown hereon without permission from THE TECHNICAL MATERIEL CORPORATION to the user. This drawing is loaned for mutual assistance and is subject to recall at any time.

Property of:
 THE TECHNICAL MATERIEL CORPORATION
 MAMARONECK, NEW YORK

REF. LD 476

①	ADD IT. 1	1/16/70	20061	GE	CO	PEB	
C	ADD MARKING NOTE	11/15/66	17262	RME		JCS/MSB	
B	1 S-404 WAS S-101	12/5/59	1001	AB		EMN	
A	1 ADDED 'A' HOLE	12/22/58	601	ave		WJ/ATK	
ISSUE	ITEM	CHANGED FROM	DATE	CH. NO.	DRAFTS	CHECKER	ENG. APP.
TOLERANCES		SCALE:					
DEC. DIM. ±		MAXIMUM ALLOWABLE TOLERANCES HAVE BEEN DETERMINED AND ANY DEVIATIONS WILL BE CAUSE FOR REJECTION.					
FRAC. DIM. ±		REMOVE ALL BURRS AND SHARP EDGES					
ANGULAR DIM. ±							
1	REQ. PER UNIT	RTF-2	MULT.		12-2-58		
		MODEL	PROJECT NO.	ASS'Y. NO.	DATE		
USED ON							

4	1	NT129-0440-4	NUT ROUND SWAGE TYPE
REQ. ITEM	PART NO.		DESCRIPTION
.062		THE TECHNICAL MATERIEL CORP. MAMARONECK, NEW YORK	
STOCK SIZE		BRACKET, BAND SW, REAR	
ALUMINUM		MATERIAL	
5052 H-32		J.C. BIELE	JADE
TYPE & TEMPER	HEAT TREAT. SPEC.	DRAWN	CHECKED
S-404 YELLOW IRIDITE			
FINISH & SPEC. NO.		ELEC. DES. APP.	MECH. DES. APP.
			MS 1418 D