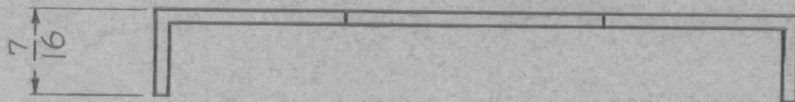
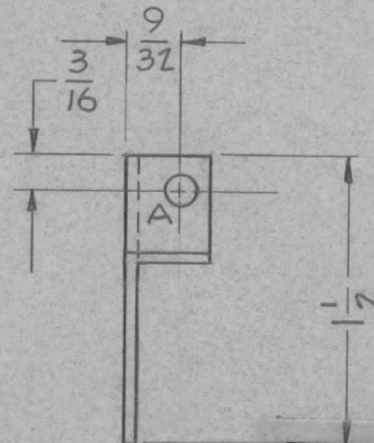
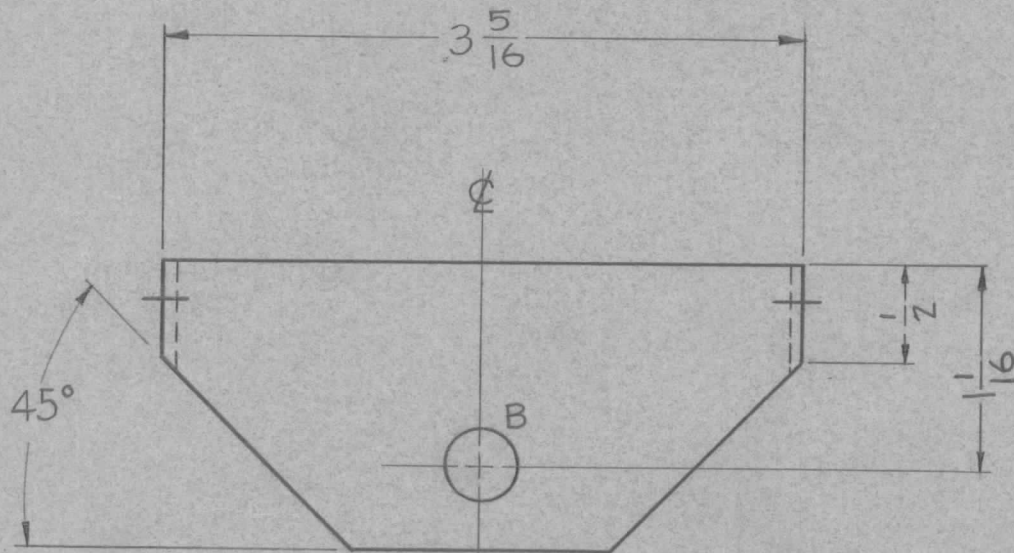


REQ. PER UNIT	USED ON			MS-1417 A
	MODEL	ASS'Y. NO.	DATE	
1	RTF-2	MULT.	11-21-58	



A ~ 5/32 (.156) DIA.  
 B ~ 3/8 (.375) DIA.

2 HOLES REQ'D  
 1 HOLE REQ'D



UNLESS OTHERWISE SPECIFIED  
 DIMENSIONS ARE IN INCHES AND INCLUDE  
 CHEMICALLY APPLIED OR PLATED FINISHES

DECIMALS	TOLERANCES	FRACTIONS
.X ± .05		± 1/64
.XX ± .01		ANGLES
.XXX ± .005		± 0° 30'

CUT HERE  
 GUARANTEED  
 2-66

REF: LD-474

REQ.	ITEM	PART NO.	DESCRIPTION				SYMBOL
		.064	THE TECHNICAL MATERIEL CORP.				
		STOCK SIZE	MAMARONECK, NEW YORK				
		ALUMINUM	BRACKET, SWITCH SUPPORT				
		MATERIAL					
		5052-H-32	J.C. BIELE	<i>[Signature]</i>	<i>[Signature]</i>		
		TYPE & TEMPER	DRAWN	CHECKED	FINAL APPROVAL		
		HEAT TREAT. SPEC.			MS-1417 A		
		FINISH & SPEC. NO.	ELEC. DES. APP.	MECH. DES. APP.			

ISSUE	ITEM	CHANGED FROM	DATE	CH. NO.	DRAFTS	CHECKER	ENG. APP.
A	1	S404-Y-IRIDITE WAS S101-CAUSTIC DIP	12-8 59	1001	P		EMN

TOLERANCES	SCALE:
DEC. DIM. ±	MAXIMUM ALLOWABLE TOLERANCES HAVE BEEN DETERMINED AND ANY DEVIATIONS WILL BE CAUSE FOR REJECTION.
FRAC. DIM. ±	REMOVE ALL BURRS AND SHARP EDGES
ANGULAR DIM. ±	