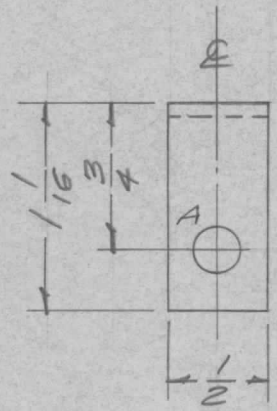
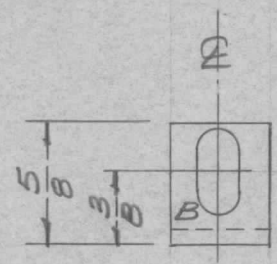


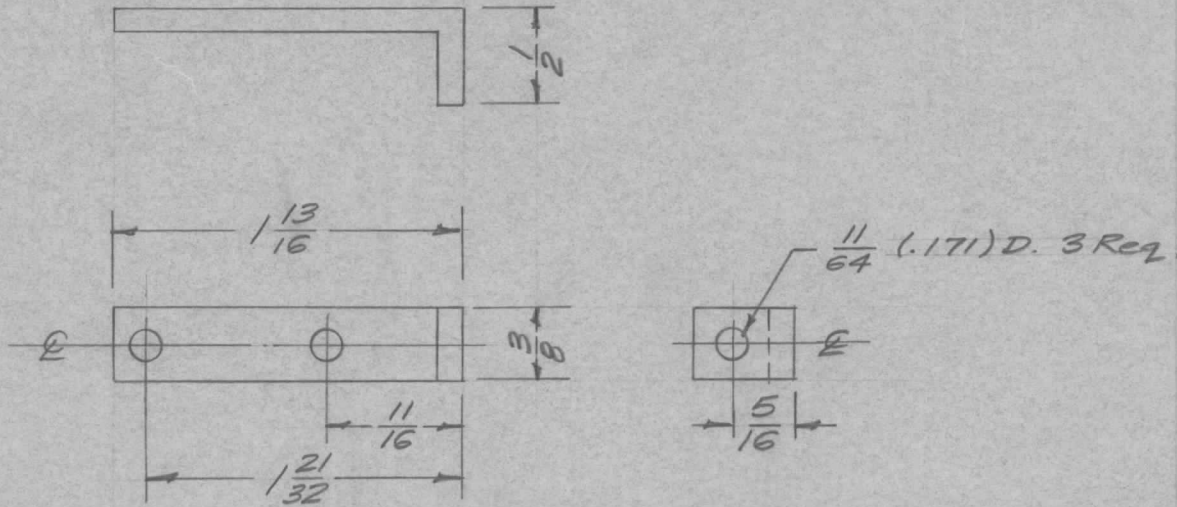
REQ. PER UNIT	USED ON		MS-1314	A
	MODEL	ASS'Y. NO.		
1	RFA-1		8-21-58	



A - $\frac{13}{64}$ (.203) D. 1 Req.
 B - $\frac{13}{64} \times \frac{13}{32}$ Slot 1 Req.

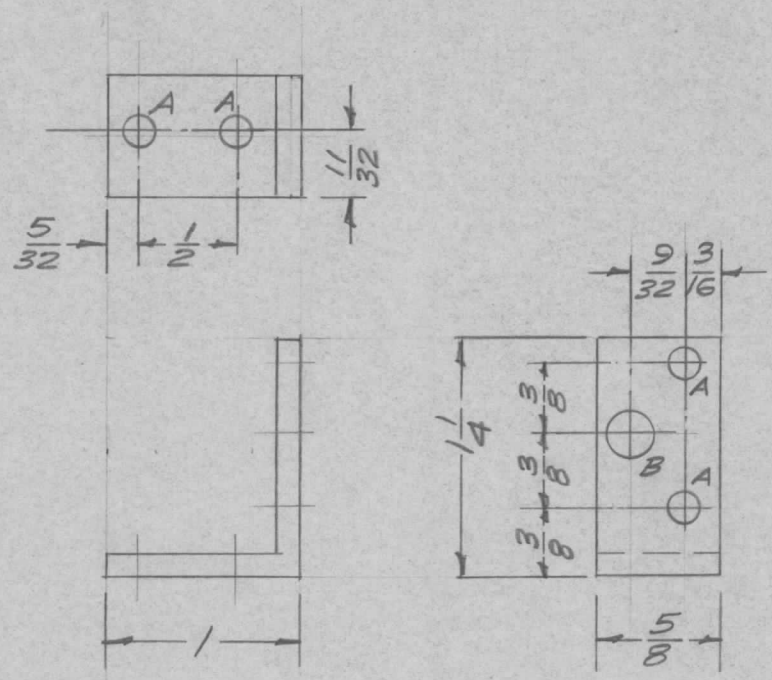
REQ. ITEM	PART NO.	DESCRIPTION	SYMBOL			
	.081 THK.	THE TECHNICAL MATERIEL CORP. MAMARONECK, NEW YORK	A			
	STOCK SIZE					
	Aluminum					
	MATERIAL	BRACKET, COIL MOUNTING, CL-137 (L212)				
ISSUE ITEM	CHANGED FROM	DATE	CH. NO.	DRAFTS	CHECKER	ENG. APP.
TOLERANCES		SCALE:		DWN. FROM CN. NO. 413		
DEC. DIM. \pm	FRAC. DIM. \pm $\frac{1}{64}$	MAXIMUM ALLOWABLE TOLERANCES HAVE BEEN DETERMINED AND ANY DEVIATIONS WILL BE CAUSE FOR REJECTION.				
ANGULAR DIM. \pm		REMOVE ALL BURRS AND SHARP EDGES				
5052-H32	— II —	16 8/21/58				
TYPE & TEMPER	HEAT TREAT. SPEC.	DRAWN	CHECKED	FINAL APPROVAL		
5404- YEL IRIDITE				MS-1314		
FINISH & SPEC. NO.	ELEC. DES. APP.	MECH. DES. APP.	A			

REQ. PER UNIT	USED ON			MS-1321	A
	MODEL	ASS'Y. NO.	DATE		
10	MSR-4		8-26-58		



ISSUE	ITEM	CHANGED FROM	DATE	CH. NO.	DRAFTS	CHECKER	ENG. APP.	REQ. ITEM	PART NO.	DESCRIPTION	SYMBOL						
										THE TECHNICAL MATERIEL CORP. MAMARONECK, NEW YORK							
									1/8 THK. STOCK SIZE EXTRUDED ALUMINUM	BRACKET, - TERMINAL BOARD							
A	1	5404-Y-IRIDITE WAS 3101 CAUSTIC DIP	12-8 59	1001	P		EMN										
TOLERANCES			SCALE: FULL					6063-T5 — H — 16 8/26/58									
DEC. DIM. ±			MAXIMUM ALLOWABLE TOLERANCES HAVE BEEN DETERMINED AND ANY DEVIATIONS WILL BE CAUSE FOR REJECTION. REMOVE ALL BURRS AND SHARP EDGES					TYPE & TEMPER		HEAT TREAT. SPEC.		DRAWN		CHECKED		FINAL APPROVAL	
FRAC. DIM. ± 1/64								S4-04-YE IRIDITE		P.J.K.		AM		MS-1321		A	
ANGULAR DIM. ±								FINISH & SPEC. NO.		ELEC. DES. APP.		MECH. DES. APP.					

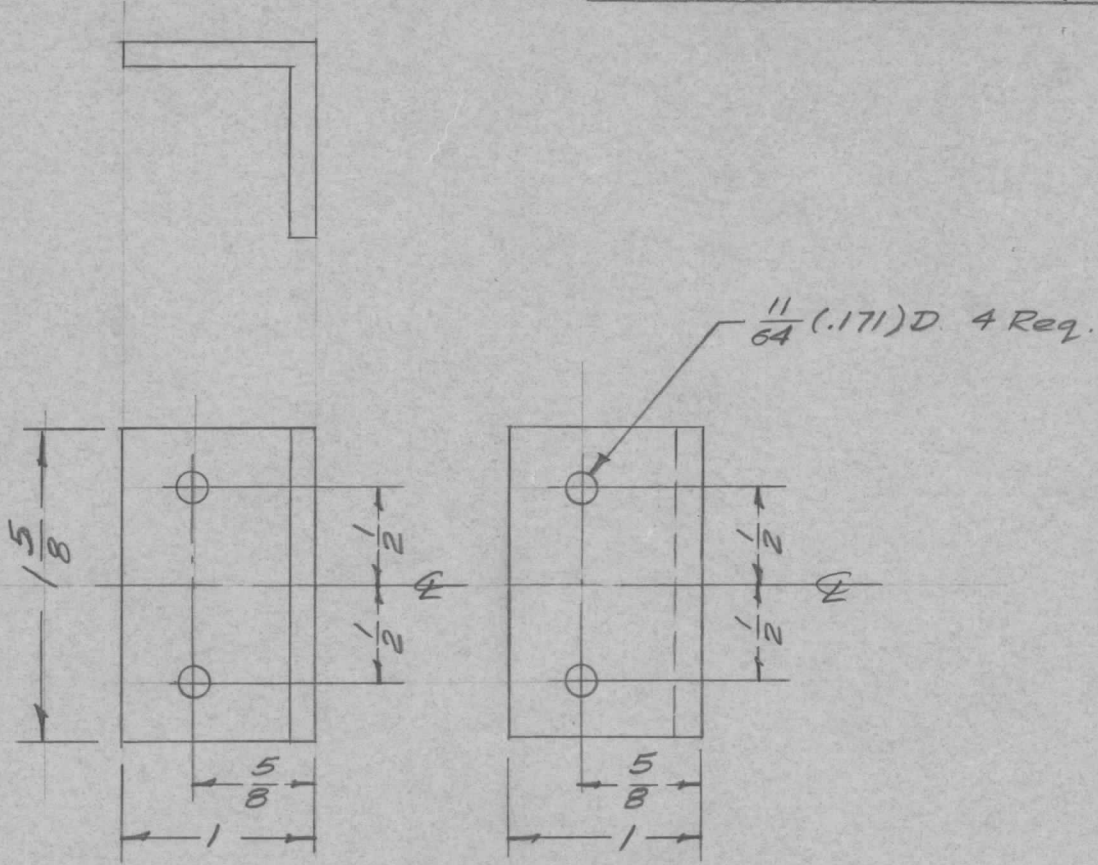
REQ. PER UNIT	USED ON			MS-1324	A
	MODEL	ASS'Y. NO.	DATE		
2	MSR-4		8-29-58		



A - 1/64 (.171) D. 4 Req.
 B - 1/4 (.250) D. 1 Req.

ISSUE	ITEM	CHANGED FROM	DATE	CH. NO.	DRAFTS	CHECKER	ENG. APP.	REQ. ITEM	PART NO.	DESCRIPTION	SYMBOL		
								1/8 Thk Angle		THE TECHNICAL MATERIEL CORP. MAMARONECK, NEW YORK BRACKET, RELAY MTG.			
A	1	5404-Y-IRID ME WAS 3/01 CAUSTIC DIP	12-8 59	1001	P		EMN	STOCK SIZE					
	1	MSR-4 DID USE MS-998 NEW DWG. PER CH. REQ.	8/29/58	439 793	16	Hde		Aluminum					
TOLERANCES								MATERIAL					
DEC. DIM. ±			SCALE: FULL					6063-T5		16 8/29/58 Hde			
FRAC. DIM. ± 1/64			MAXIMUM ALLOWABLE TOLERANCES HAVE BEEN DETERMINED AND ANY DEVIATIONS WILL BE CAUSE FOR REJECTION. REMOVE ALL BURRS AND SHARP EDGES					TYPE & TEMPER		DRAWN		CHECKED	FINAL APPROVAL
ANGULAR DIM. ±								S404 YEL. IRIDITE		P.I.K.			
								FINISH & SPEC. NO.		ELEC. DES. APP.		MECH. DES. APP.	

REQ. PER UNIT	USED ON			MS-1325	A
	MODEL	ASS'Y. NO.	DATE		
1	MSR-4		8-29-58		
1	AFC-1		8-15-60		
1	GPE-1		6-13-61		

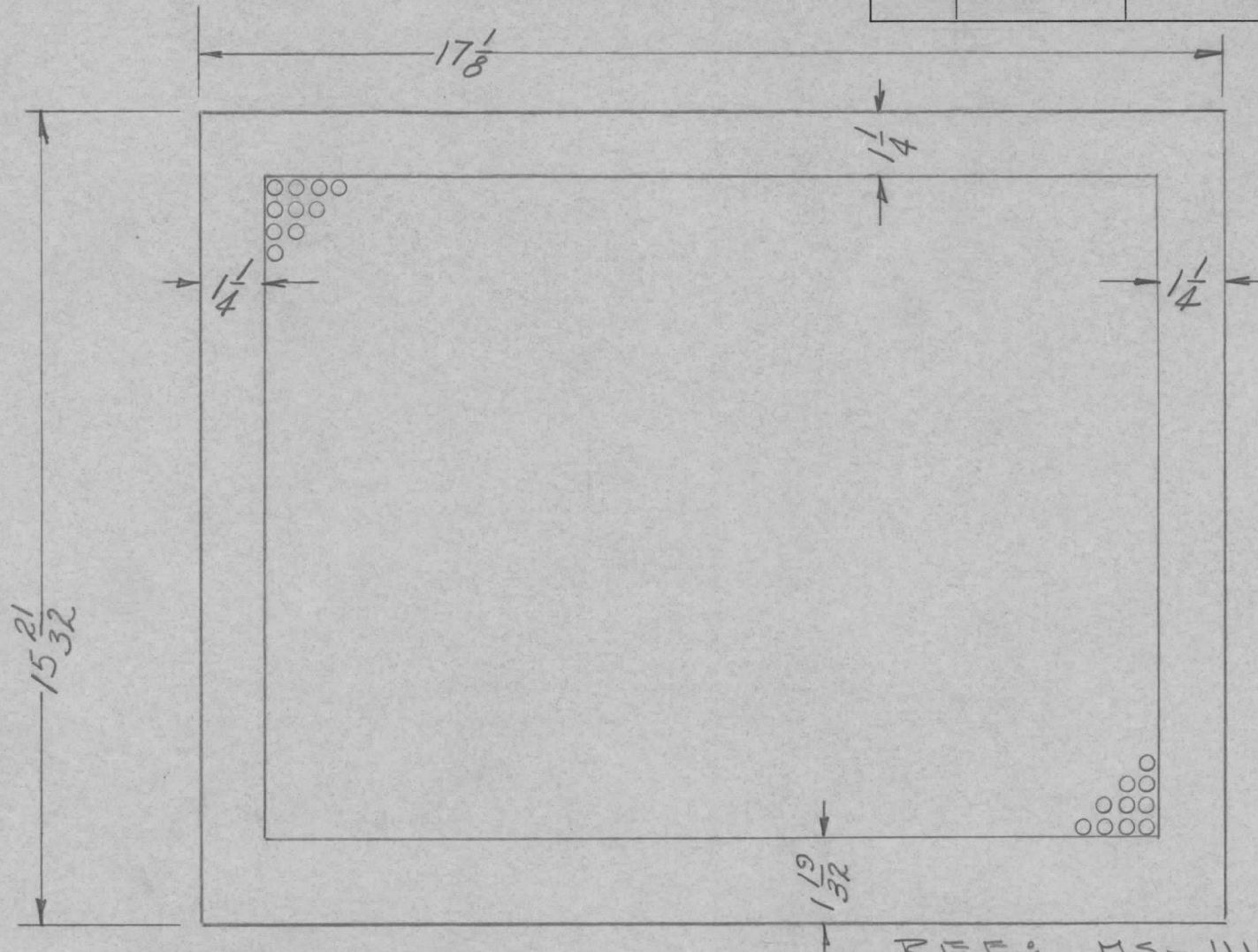


REQ.	ITEM	PART NO.	DESCRIPTION				SYMBOL
		$\frac{1}{8}$ Thk Angle	THE TECHNICAL MATERIEL CORP.				
		STOCK SIZE	MAMARONECK, NEW YORK				
		ALUMINUM	FOR SUPPORT, SIDEPLATE				
		MATERIAL					
		6063-T5	16/29/58	<i>[Signature]</i>	<i>[Signature]</i>		
		TYPE & TEMPER	HEAT TREAT. SPEC.	DRAWN	CHECKED	FINAL APPROVAL	
		5404-IRIDITE	P.P.K.	<i>[Signature]</i>			
		FINISH & SPEC. NO.	ELEC. DES. APP.	MECH. DES. APP.			
					MS-1325	A	

ISSUE	ITEM	CHANGED FROM	DATE	CH. NO.	DRAFTS	CHECKER	ENG. APP.
A	1	5404-YEL. IRIDITE WAS 5101 CAUSTIC D.I.D	12-8-59	1001	P		EMN
-	-	DRAWN FROM CHG. NO. 439 Pg. 3	8/29/58	-	16	-	-

TOLERANCES	SCALE: FULL
DEC. DIM. \pm	MAXIMUM ALLOWABLE TOLERANCES HAVE BEEN DETERMINED AND ANY DEVIATIONS WILL BE CAUSE FOR REJECTION.
FRAC. DIM. $\pm \frac{1}{64}$	REMOVE ALL BURRS AND SHARP EDGES
ANGULAR DIM. \pm	

REQ. PER UNIT	USED ON			MS-1330
	MODEL	ASS'Y. NO.	DATE	



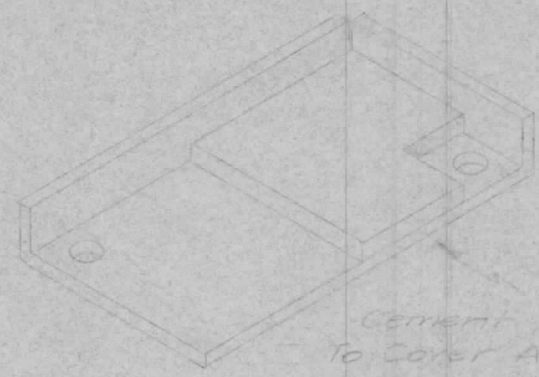
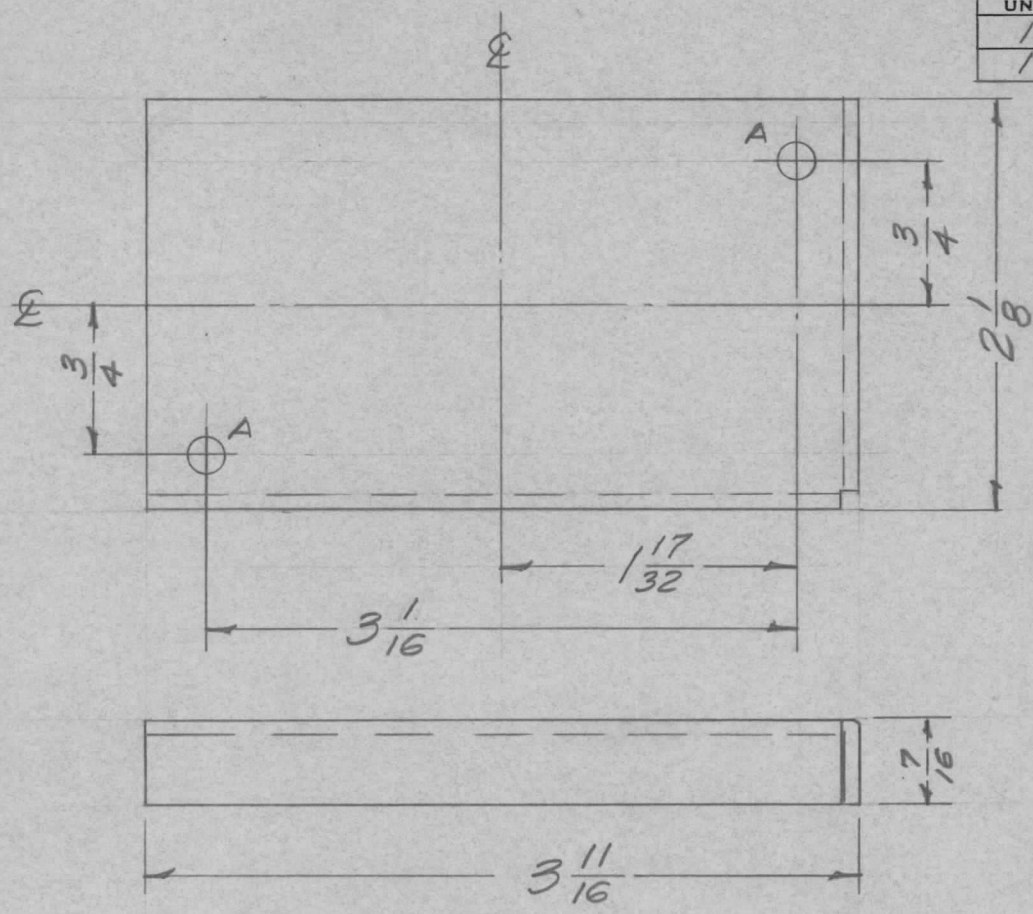
PERFORATIONS :
 .072 HOLES ON $\frac{1}{8}$ CENTERS

REF: MS-1115

REQ. ITEM	PART NO.	DESCRIPTION	SYMBOL				
	.051 THICK	THE TECHNICAL MATERIEL CORP. MAMARONECK, NEW YORK					
	STOCK SIZE						
	ALUMINUM	BLANK SIZE, BOTTOM COVER					
	MATERIAL						
ISSUE	ITEM	CHANGED FROM	DATE	CH. NO.	DRAFTS	CHECKER	ENG. APP.
TOLERANCES		SCALE: <i>cto</i>					
DEC. DIM. \pm $\frac{1}{64}$		MAXIMUM ALLOWABLE TOLERANCES HAVE BEEN DETERMINED AND ANY DEVIATIONS WILL BE CAUSE FOR REJECTION. REMOVE ALL BURRS AND SHARP EDGES					
FRAC. DIM. \pm							
ANGULAR DIM. \pm							
5052-H32		<i>cto</i>		9/9/58		<i>[Signature]</i>	
TYPE & TEMPER		HEAT TREAT. SPEC.		DRAWN		CHECKED	
<i>cto</i>						<i>[Signature]</i>	
FINISH & SPEC. NO.		ELEC. DES. APP.		MECH. DES. APP.		MS-1330	

REQ. PER UNIT	USED ON		
	MODEL	ASS'Y. NO.	DATE
1	MSR-1,3,4	A-1581(1)	9-8-58
1	FFR-2	A-1581(1)	9-8-58

MS-1331 B



cement 50/125
 To cover as shown.

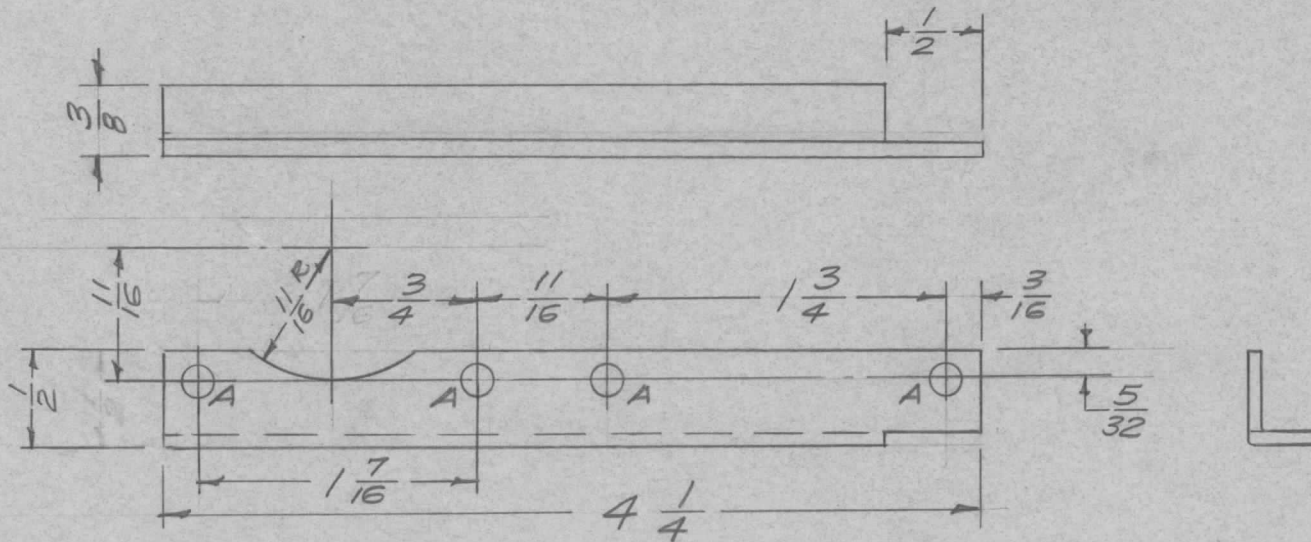
A - $\frac{13}{64}$ (.203) D. 2 Req.

ISSUE	ITEM	CHANGED FROM	DATE	CH. NO.	DRAFTS	CHECKER	ENG. APP.
B	1	S404-YEL. IRIDITE WAS 5101 CAUSTIC DIP	12-8-59	1001	P		EMN
A	1	3-1/16 WAS 3-11/16 (Error) Hole Size Added	9/16/58	1	16	RLK	AM
TOLERANCES			SCALE: FULL				
DEC. DIM. \pm			MAXIMUM ALLOWABLE TOLERANCES HAVE BEEN DETERMINED AND ANY DEVIATIONS WILL BE CAUSE FOR REJECTION.				
FRAC. DIM. \pm 1/64			REMOVE ALL BURRS AND SHARP EDGES				
ANGULAR DIM. \pm							

REQ. ITEM	PART NO.	DESCRIPTION	SYMBOL
	.081 THK.	THE TECHNICAL MATERIEL CORP. MAMARONECK, NEW YORK	MS-1331 B
	STOCK SIZE		
	ALUMINUM	COVER, CAPACITOR	
	MATERIAL		
	5052-H32	16 ⁹ /8/58	
	TYPE & TEMPER	HEAT TREAT. SPEC.	DRAWN
	S404-IRIDITE		CHECKED
	FINISH & SPEC. NO.	ELEC. DES. APP.	MECH. DES. APP.

REQ. PER UNIT	USED ON		
	MODEL	ASS'Y. NO.	DATE
1	FFR-3		9/8/58
1	MSR-1,3,4		9/8/58

MS-1332 B



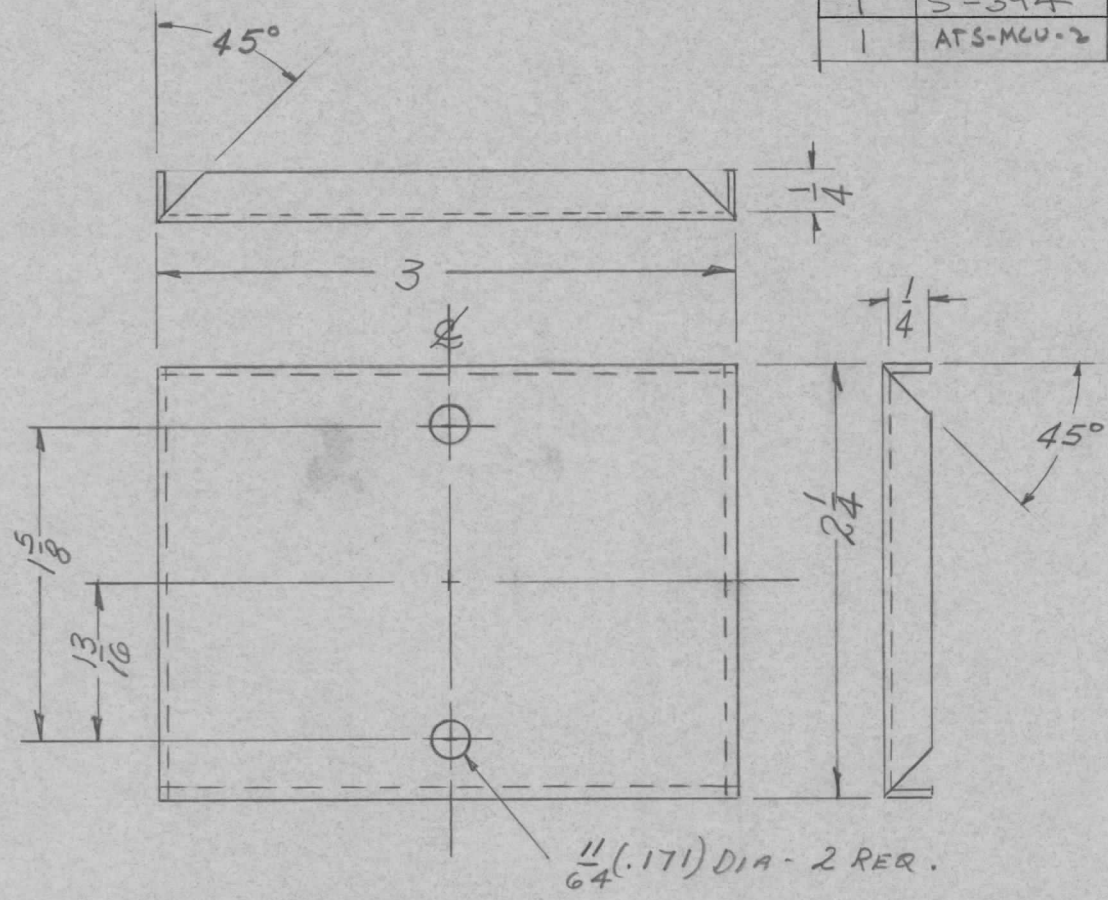
A - $\frac{13}{64}$ (.203) D. 4 Req.

ISSUE	ITEM	CHANGED FROM	DATE	CH. NO.	DRAFTS	CHECKER	ENG. APP.	REQ. ITEM	PART NO.	DESCRIPTION	SYMBOL	
B	1	S404-Y-IRIDITE WAS S101-CAUSTIC D/P	12-8 59	1001	P	EMN				THE TECHNICAL MATERIEL CORP. MAMARONECK, NEW YORK BRACE, POWER SUPPLY CHASSIS	MS-1332 B	
A	1	11/16 R. Added (cutout) FFR-3 Ref was FFR-2	10/27/58	507	16	JLD P.L.K. & R.		.081 THK. STOCK SIZE				
			9/5/58	443 Pg. 1	16			ALUMINUM				
								MATERIAL				
TOLERANCES			SCALE: FULL					5052-H32	16 9/8/58	JLD	JLD	
DEC. DIM. \pm			MAXIMUM ALLOWABLE TOLERANCES HAVE BEEN DETERMINED AND ANY DEVIATIONS WILL BE CAUSE FOR REJECTION. REMOVE ALL BURRS AND SHARP EDGES					TYPE & TEMPER	HEAT TREAT. SPEC.	DRAWN	CHECKED	FINAL APPROVAL
FRAC. DIM. \pm 1/64								5404-15L IRIDITE	P.L.K.	JLD		
ANGULAR DIM. \pm								FINISH & SPEC. NO.	ELEC. DES. APP.	MECH. DES. APP.		

REQ. PER UNIT	USED ON		
	MODEL	ASS'Y. NO.	DATE
1	S-39A	ATS-MCU MOD. KIT	
1	ATS-MCU-2		6-8-59

MS-1336

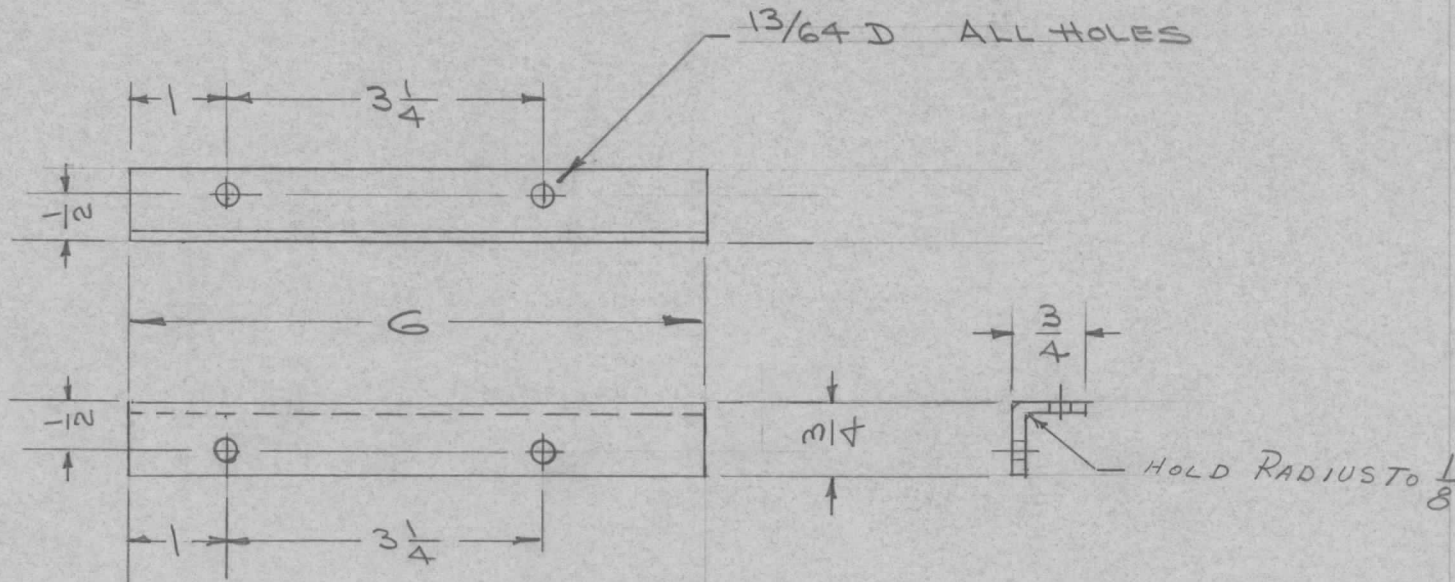
A



ISSUE	ITEM	CHANGED FROM	DATE	CH. NO.	DRAFTS	CHECKER	ENG. APP.
A	1	S404-Y-IRIDITE WAS S101-CAUSTIC DIP	12-8 59	1001	Ⓟ		EMN
TOLERANCES		SCALE:					
DEC. DIM. ±		MAXIMUM ALLOWABLE TOLERANCES HAVE BEEN DETERMINED AND ANY DEVIATIONS WILL BE CAUSE FOR REJECTION.					
FRAC. DIM. ±		REMOVE ALL BURRS AND SHARP EDGES					
ANGULAR DIM. ±		1/64					

REQ. ITEM	PART NO.	DESCRIPTION	SYMBOL
	.051 THICK STOCK SIZE	THE TECHNICAL MATERIEL CORP. MAMARONECK. NEW YORK	
	ALUMINUM	TOP HAT, RELAY CLAMP	
	MATERIAL	ATS-MCU PROTECTIVE CIRCUIT	
5052-H32	cto	asc	H2
TYPE & TEMPER	HEAT TREAT. SPEC.	DRAWN	CHECKED
S404-YEL IRIDITE			
FINISH & SPEC. NO.	ELEC. DES. APP.	MECH. DES. APP.	
			MS-1336
			A

REQ. PER UNIT	USED ON			MS-1337	A
	MODEL	ASS'Y. NO.	DATE		
2	RTX-2		9-16-58		

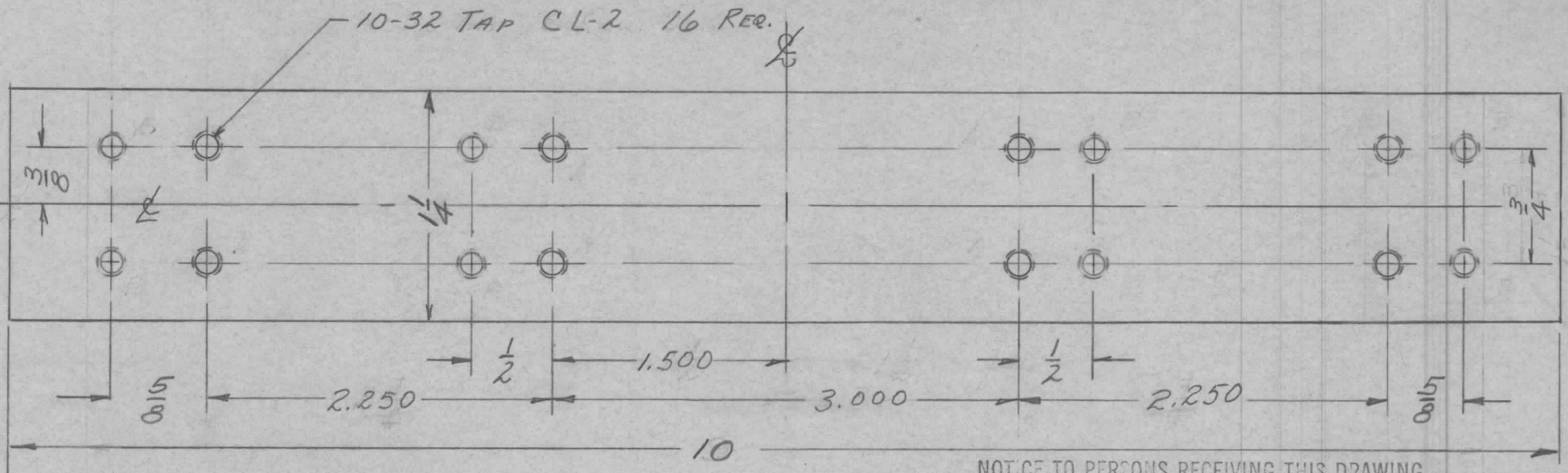


REF: DIE # 79-A

							REQ. ITEM	PART NO.	DESCRIPTION			SYMBOL				
							3/4 x 3/4 x V8	★	THE TECHNICAL MATERIEL CORP.							
							STOCK SIZE		MAMARONECK, NEW YORK							
							ALUMINUM		BRACKET, UNIT SUPPORT							
							MATERIAL									
A	1	5404-YEL IRIDITE WAS 5101 CAUSTIC DIP	12-8 59	1001	EP											
ISSUE	ITEM	CHANGED FROM	DATE	CH. NO.	DRAFTS	CHECKER	ENG. APP.									
TOLERANCES			SCALE:				6063-T5	9/16/58	ave	16	Final Approval					
DEC. DIM. ±			MAXIMUM ALLOWABLE TOLERANCES HAVE BEEN DETERMINED AND ANY DEVIATIONS WILL BE CAUSE FOR REJECTION. REMOVE ALL BURRS AND SHARP EDGES				TYPE & TEMPER		HEAT TREAT. SPEC.		DRAWN		CHECKED		FINAL APPROVAL	
FRAC. DIM. ± 1/64							5404 YEL. IRIDITE						REF		MS-1337	
ANGULAR DIM. ±							FINISH & SPEC. NO.		ELEC. DES. APP.		MECH. DES. APP.					

REQ. PER UNIT	USED ON		
	MODEL	ASS'Y. NO.	DATE
2	RTX-2		9-16-58
2	RTS-2		4-28-59

MS-1338 A



A - 10-32 TAP CL-2 8 REQ.

NOTICE TO PERSONS RECEIVING THIS DRAWING

THE TECHNICAL MATERIEL CORPORATION claims proprietary right in the material disclosed herein. This drawing is issued in confidence for engineering information only and may not be reproduced or used to manufacture anything shown herein without permission from THE TECHNICAL MATERIEL CORPORATION to the user. This drawing is loaned for mutual assistance and is subject to recall at any time.

Property of:

THE TECHNICAL MATERIEL CORPORATION

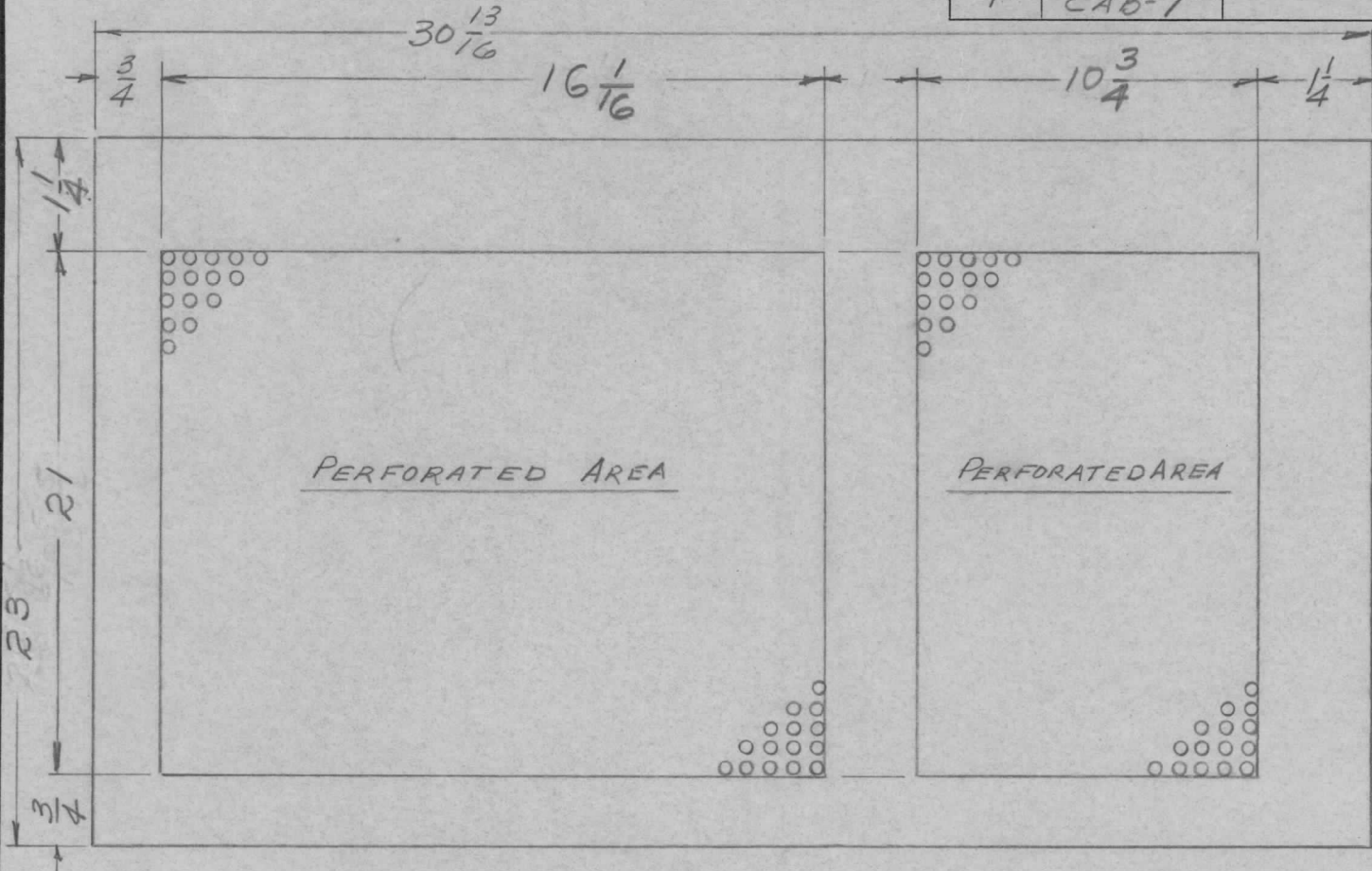
REF: MS-1335 MAMARONECK, NEW YORK

							REQ. ITEM	PART NO.	DESCRIPTION			SYMBOL		
							$\frac{1}{2}$ THICK	THE TECHNICAL MATERIEL CORP.						
							STOCK SIZE	MAMARONECK, NEW YORK						
							MILD STEEL	MOUNTING PLATE, FRONT PANEL						
							MATERIAL							
							<i>cto</i>	<i>cto</i>	9/16/58	<i>16</i>	<i>cto</i>			
							TYPE & TEMPER		HEAT TREAT. SPEC.	DRAWN	CHECKED	FINAL APPROVAL		
							CAD. PLATE			<i>REF</i>		MS-1338 A		
							FINISH & SPEC. NO.		ELEC. DES. APP.	MECH. DES. APP.				

ISSUE ITEM A
 CHANGED FROM 1/4 WAS 1/2 10 WAS 9
 QUAN TAPS WAS 8
 DATE 4-15-59
 CH. NO.
 DRAFTS
 CHECKER *cto*
 ENG. APP. *cto*

TOLERANCES: DEC. DIM. $\pm .0025$, FRAC. DIM. $\pm \frac{1}{64}$, ANGULAR DIM. \pm
 SCALE: FULL SIZE
 MAXIMUM ALLOWABLE TOLERANCES HAVE BEEN DETERMINED AND ANY DEVIATIONS WILL BE CAUSE FOR REJECTION.
 REMOVE ALL BURRS AND SHARP EDGES

REQ. PER UNIT	USED ON			MS-1352	C
	MODEL	ASS'Y. NO.	DATE		
1	CAB-7		10-8-58		



PERFORATION:
 .150 DIA. HOLES
 ON $\frac{3}{16}$ CENTERS
 (33 HOLES PER SQ. IN.)

REF.: (8) MS-1353 (R.F. SHIELD)

C	1	S404-IRIDITE WAS S/DI CAUSTIC DIP	12-8 59	1001	P	EMM	REQ. ITEM	PART NO.	DESCRIPTION	SYMBOL		
B	1	COMPLETE REVISION	9/1/59	1042	LOC	V6	.064 THICK		THE TECHNICAL MATERIEL CORP. MAMARONECK, NEW YORK	BLANK SIZE, R.F. SHIELD		
A	1	19 5/16 was 19 5/8 16 5/16 was 17 1/16 21 5/16 was 21 5/8	1/6/59	653	JLR		ALUMINUM					
ISSUE ITEM		CHANGED FROM	DATE	CH. NO.	DRAFTS	CHECKER	ENG. APP.					
TOLERANCES			SCALE: <i>1/4" = 1"</i>				5052-H32		10-9-58 EMM	CARR		
DEC. DIM. ± FRAC. DIM. ± 1/64 ANGULAR DIM. ±			MAXIMUM ALLOWABLE TOLERANCES HAVE BEEN DETERMINED AND ANY DEVIATIONS WILL BE CAUSE FOR REJECTION. REMOVE ALL BURRS AND SHARP EDGES				TYPE & TEMPER S404-YEL. IRIDITE		HEAT TREAT. SPEC.		DRAWN RFB	
							FINISH & SPEC. NO.		ELEC. DES. APP.		MECH. DES. APP. MS-1352 C	

REQ. PER UNIT	USED ON			MS-1355	A
	MODEL	ASS'Y. NO.	DATE		
1	CAB-7		10-8-58		



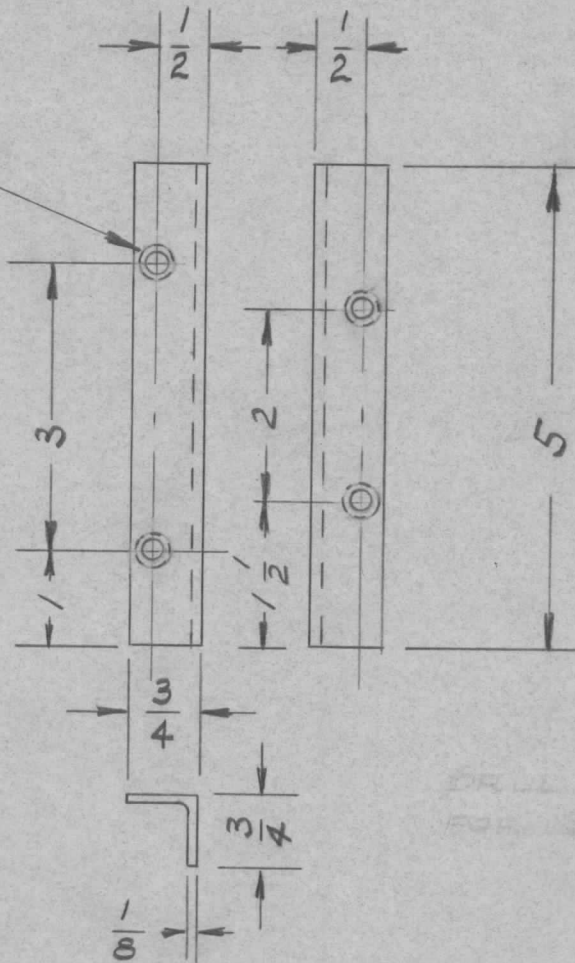
PERFORATION - .150 DIA. HOLES
ON $\frac{3}{16}$ CENTERS.
(33 HOLES PER SQ. IN.)

REF. (2) MS-1356 (COVER TOP FILTER)

REQ. ITEM	PART NO.	DESCRIPTION	SYMBOL
	.064	THE TECHNICAL MATERIEL CORP. MAMARONECK, NEW YORK	A
	STOCK SIZE		
	ALUMINUM	BLANK SIZE, TOP FILTER	
	MATERIAL		
A -	MATERIAL WAS 1/16 STEEL	12/30/58	G29
ISSUE ITEM	CHANGED FROM	DATE	CH. NO. DRAFTS CHECKER ENG. APP.
TOLERANCES		SCALE:	CRD
DEC. DIM. \pm		MAXIMUM ALLOWABLE TOLERANCES HAVE BEEN DETERMINED AND ANY DEVIATIONS WILL BE CAUSE FOR REJECTION.	
FRAC. DIM. \pm 1/64		REMOVE ALL BURRS AND SHARP EDGES	
ANGULAR DIM. \pm			
5052-H32	CRD	10-9-58	FILE
TYPE & TEMPER	HEAT TREAT. SPEC.	DRAWN	CHECKED
			RFB
FINISH & SPEC. NO.	ELEC. DES. APP.	MECH. DES. APP.	MS-1355
			A

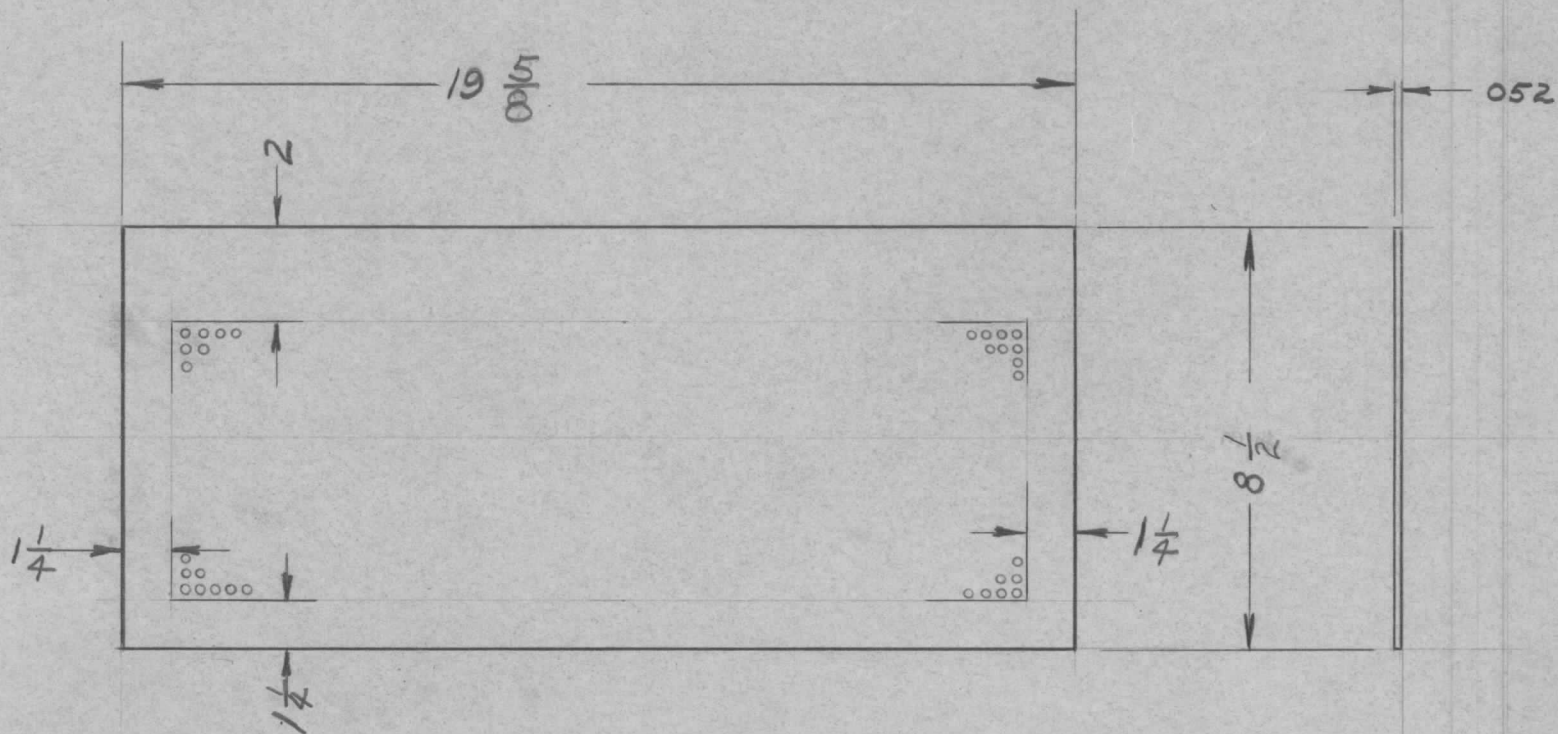
REQ. PER UNIT	USED ON			MS-1368
	MODEL	ASS'Y. NO.	DATE	
2	RTP-2		10-15-58	

DRILL $\frac{5}{16}$ TAP
FOR $\frac{8}{32}$ CL 2
4 REQ'D.



ISSUE	ITEM	CHANGED FROM	DATE	CH. NO.	DRAFTS	CHECKER	ENG. APP.	REQ. ITEM	PART NO.	DESCRIPTION	SYMBOL	
								$\frac{3}{4} \times \frac{3}{4} \times \frac{1}{8}$		THE TECHNICAL MATERIEL CORP. MAMARONECK, NEW YORK		
								STOCK SIZE		BRACKET, REGULATOR CHASSIS		
								BRASS # 1140		RTP-2		
								MATERIAL				
								$\frac{1}{2}$ HARD		TOURLE	10/16/58 DTC	
								TYPE & TEMPER	HEAT TREAT. SPEC.	DRAWN	CHECKED	FINAL APPROVAL
								S105 CADMIUM PLATE			RFB	
								FINISH & SPEC. NO.		ELEC. DES. APP.	MECH. DES. APP.	MS-1368
TOLERANCES			SCALE:									
DEC. DIM. \pm			MAXIMUM ALLOWABLE TOLERANCES HAVE BEEN DETERMINED AND ANY DEVIATIONS WILL BE CAUSE FOR REJECTION. REMOVE ALL BURRS AND SHARP EDGES									
FRAC. DIM. \pm												
ANGULAR DIM. \pm												

REQ. PER UNIT	USED ON			MS-1370
	MODEL	ASS'Y. NO.	DATE	
1	RTP-2		10-10-58	

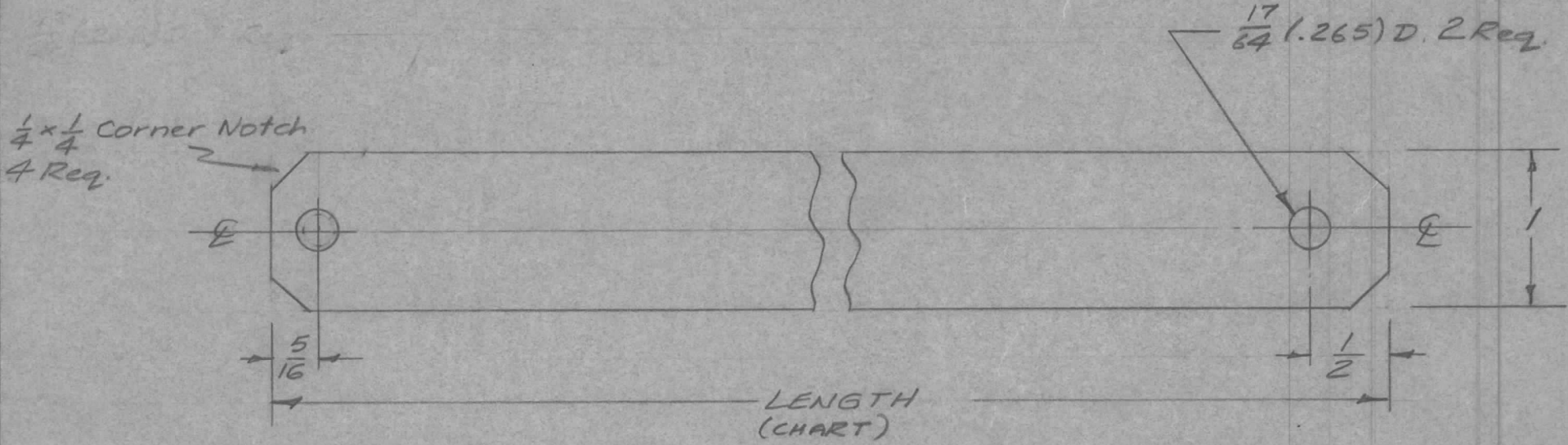


PERFORATED $\frac{1}{8}$ HOLES, $\frac{3}{16}$ CENTERS

REF. DWG - MS 1364

REQ. ITEM	PART NO.	DESCRIPTION	SYMBOL
	.052	THE TECHNICAL MATERIEL CORP.	
	STOCK SIZE	MAMARONECK, NEW YORK	
	ALUMINUM	COVER, BLANK	
	MATERIAL	REGULATOR CHASSIS	
ISSUE ITEM	CHANGED FROM	DATE	CH. NO. DRAFTS CHECKER ENG. APP.
TOLERANCES		SCALE:	
DEC. DIM. \pm		MAXIMUM ALLOWABLE TOLERANCES HAVE BEEN DETERMINED AND ANY DEVIATIONS WILL BE CAUSE FOR REJECTION.	
FRAC. DIM. \pm	1/64	REMOVE ALL BURRS AND SHARP EDGES	
ANGULAR DIM. \pm			
5052-H32		DRAWN	CHECKED
TYPE & TEMPER	HEAT TREAT. SPEC.	MECH. DES. APP.	FINAL APPROVAL
FINISH & SPEC. NO.		ELEC. DES. APP.	MS-1370

REQ. PER UNIT	USED ON			MS-1372	A
	MODEL	ASS'Y. NO.	DATE		
	TER-5000-70		1-9-59		

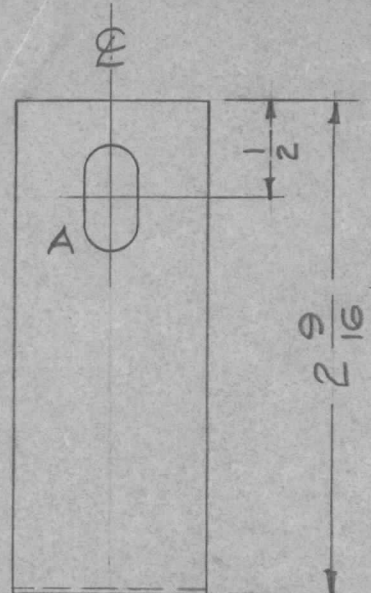


PART NO.	LENGTH	
MS-1372-1	8 13/16	Lead, Ground, Top Left 1 Per
MS-1372-2	10 5/16	Lead, Ground, Top Right 1 Per
OBSOLETE USE CA954 MS-1372-3	12 7/8	Lead, Input Connector 2 Per
MS-1372-4	18	

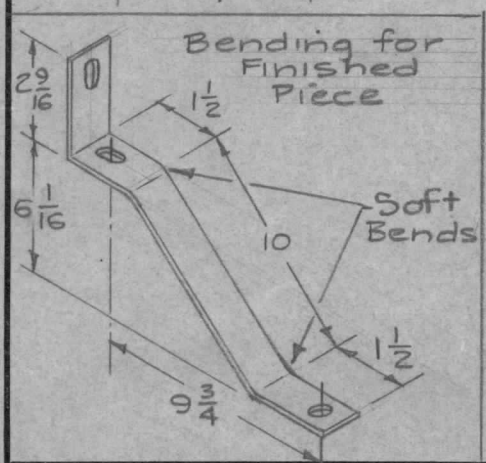
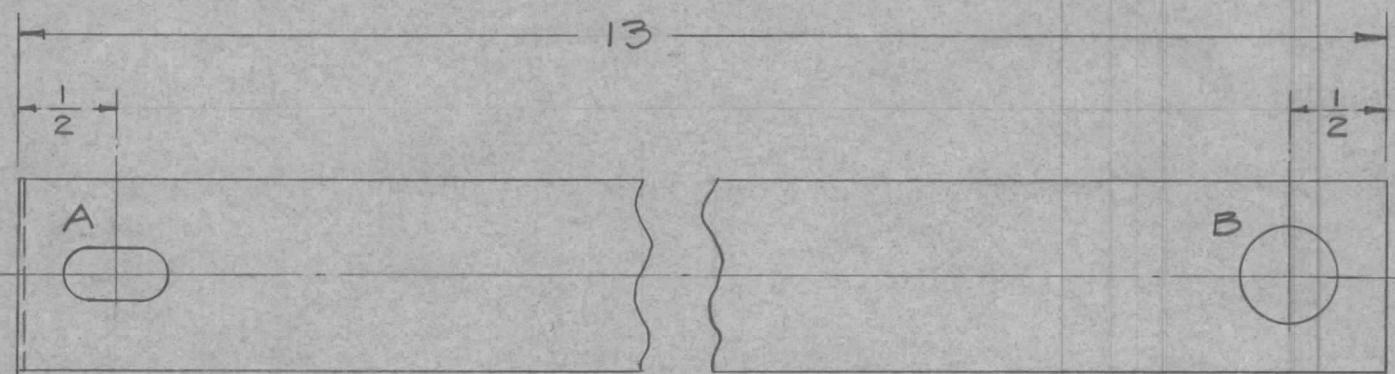
ISSUE	ITEM	CHANGED FROM	DATE	CH. NO.	DRAFTS	CHECKER	ENG. APP.	REQ. ITEM	PART NO.	DESCRIPTION	SYMBOL
A	2	OBSOLETE USE CA954" ADD. MS-1372-4" ADD.	11-7-65	13228	22	[Signature]	[Signature]			THE TECHNICAL MATERIEL CORP. MAMARONECK, NEW YORK	
TOLERANCES								.025 THK. STOCK SIZE		LEAD, CONNECTING	
DEC. DIM. ± FRAC. DIM. ± 1/64 ANGULAR DIM. ±								Copper MATERIAL		LEAD, CONNECTING	
SCALE: FULL								COMM. HARD		16 11/16/59	
MAXIMUM ALLOWABLE TOLERANCES HAVE BEEN DETERMINED AND ANY DEVIATIONS WILL BE CAUSE FOR REJECTION. REMOVE ALL BURRS AND SHARP EDGES								5245 Silver Plate .0005 FINISH & SPEC. NO.		DRAWN CHECKED FINAL APPROVAL	
								ELEC. DES. APP.		MECH. DES. APP.	
										MS-1372 A	

REQ. PER UNIT	USED ON		
	MODEL	ASS'Y. NO.	DATE
2	TER-5000-70		1-28-59

MS-1373

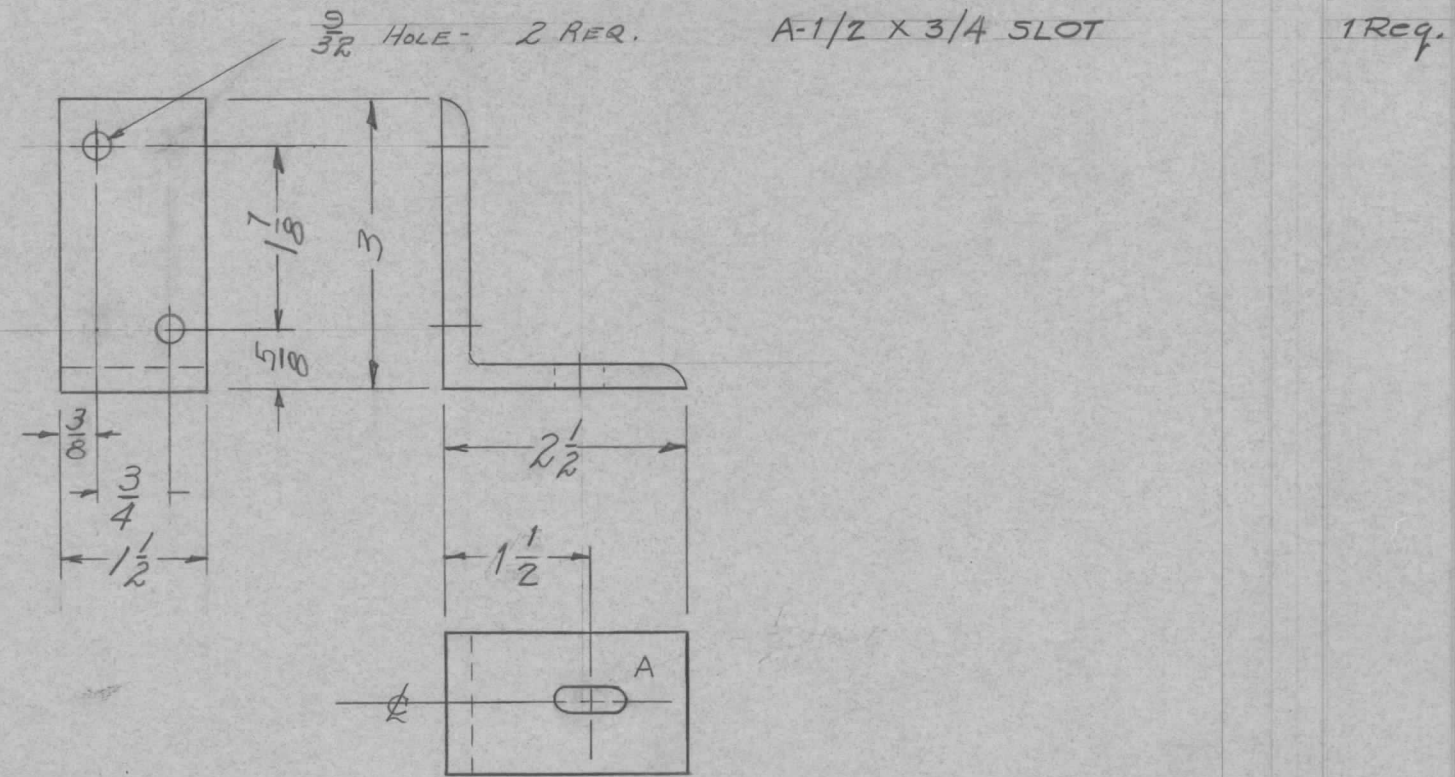


A - $\frac{17}{64} \times \frac{17}{32}$ SLOT 2 Req.
 B - $\frac{17}{32}$ (.531) D. 1 Req.



REQ.	ITEM	PART NO.	DESCRIPTION			SYMBOL	
			THE TECHNICAL MATERIEL CORP.				
			MAMARONECK, NEW YORK				
			LEAD, GROUND, BOTTOM				
			MATERIAL				
			Comm. Hard	16/28/59	HD	AL	
			TYPE & TEMPER	HEAT TREAT. SPEC.	DRAWN	CHECKED	
			5245 Silver Plate .0005			8.G.	
			FINISH & SPEC. NO.	ELEC. DES. APP.	MECH. DES. APP.	MS-1373	
ISSUE	ITEM	CHANGED FROM	DATE	CH. NO.	DRAFTS	CHECKER	ENG. APP.
TOLERANCES			SCALE: FULL SCALE				
DEC. DIM. ±			MAXIMUM ALLOWABLE TOLERANCES HAVE BEEN DETERMINED AND ANY DEVIATIONS WILL BE CAUSE FOR REJECTION.				
FRAC. DIM. ± 1/64			REMOVE ALL BURRS AND SHARP EDGES				
ANGULAR DIM. ±							

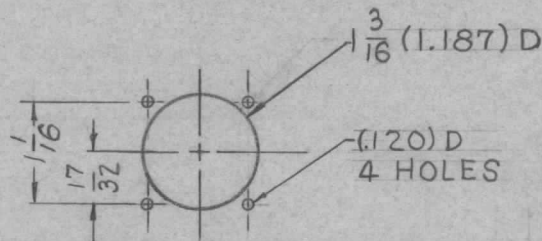
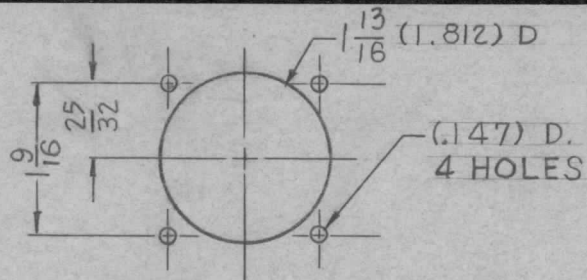
REQ. PER UNIT	USED ON			MS-1376	B
	MODEL	ASS'Y. NO.	DATE		
2	CAB-7		10-9-58		



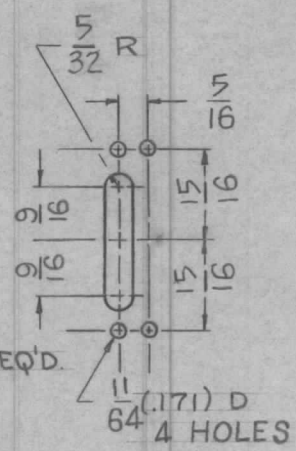
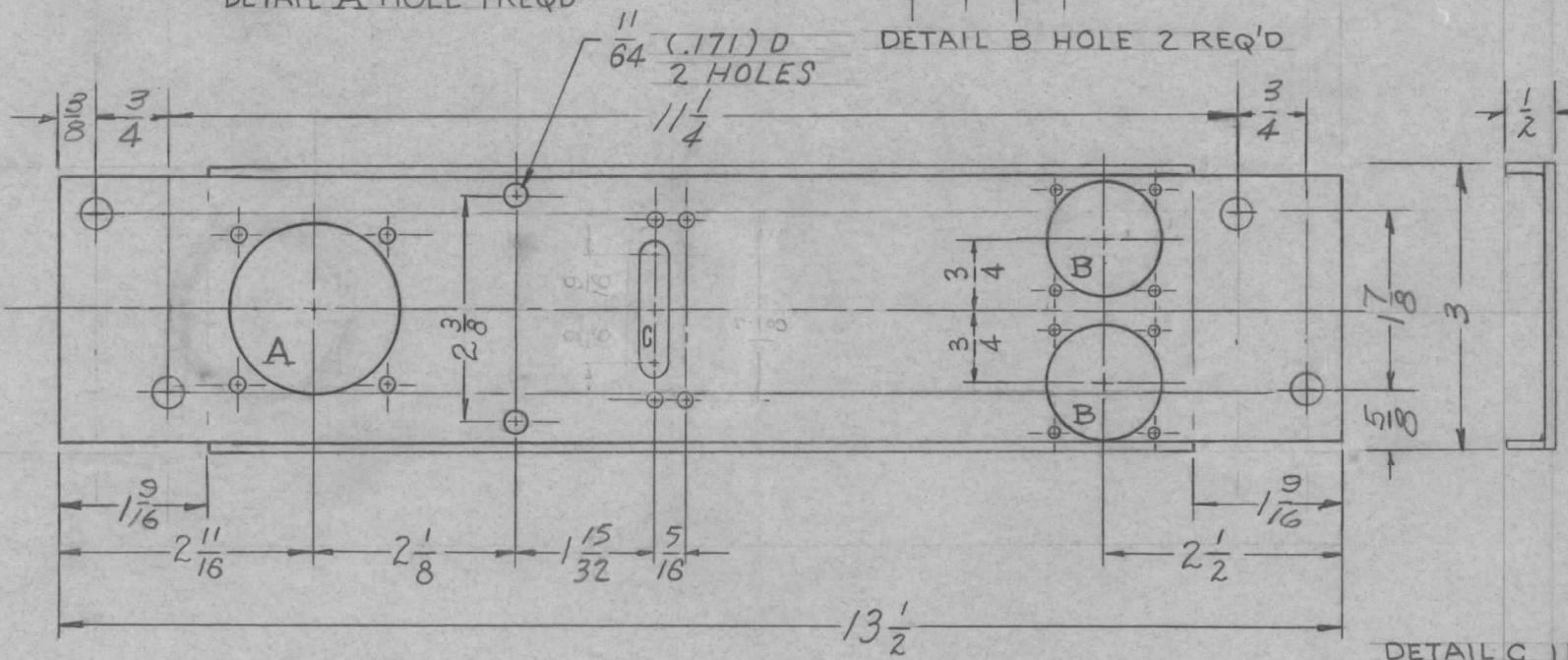
REF.: TMC MS-1360 SHEET 2 SEC B-B

ISSUE	ITEM	CHANGED FROM	DATE	CH. NO.	DRAFTS	CHECKER	ENG. APP.	REQ. ITEM	PART NO.	DESCRIPTION	SYMBOL	
B	2	Slot added	2/17/59	790	J.C.B.	<i>[Signature]</i>	<i>[Signature]</i>	2 1/2 x 3 x 1/4	THE TECHNICAL MATERIEL CORP.	BRACKET, STOP, GUIDE PIN	B	
	1	1 1/2 DIM WAS 1 5/8						STOCK SIZE	MAMARONECK. NEW YORK			
A	1	5/8 DIM. WAS 1 3/2	1/20/59	692	J.C.B.	<i>[Signature]</i>	<i>[Signature]</i>	STEEL				
TOLERANCES								MATERIAL				
SCALE: 6"=1'0"			MAXIMUM ALLOWABLE TOLERANCES HAVE BEEN DETERMINED AND ANY DEVIATIONS WILL BE CAUSE FOR REJECTION.					FINISH & SPEC. NO.				
DEC. DIM. ±			REMOVE ALL BURRS AND SHARP EDGES					TYPE & TEMPER HEAT TREAT. SPEC.				
FRAC. DIM. ± 1/64								CADMIUM PLATE S-105				
ANGULAR DIM. ±								DRAWN CHECKED				
								ELEC. DES. APP. MECH. DES. APP.		MS-1376		B

REQ. PER UNIT	USED ON		MS-1377	A
	MODEL	ASS'Y. NO.		
1	CAB-7		10-10-58	



5/16 HOLES - 4 REQ.



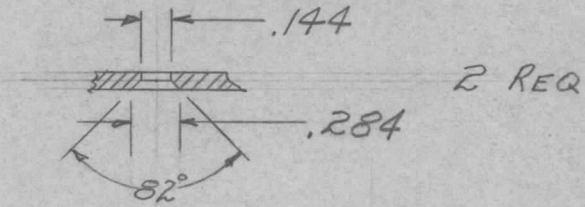
NOTE: S-404 YELLOW IRIDITE
 S-114 ZINC CHROMATE PRIMER
 S-220 BLUE GRAY, SEMI GLOSS ENAMEL

REF-TMC# LD-478
 REF: TMC MS-1360 SHEET 2 SEC B-B

ISSUE	ITEM	CHANGED FROM	DATE	CH. NO.	DRAFTS	CHECKER	ENG. APP.
TOLERANCES							
DEC. DIM. ±			SCALE: 6"=1'0"				
FRAC. DIM. ± 1/64			MAXIMUM ALLOWABLE TOLERANCES HAVE BEEN DETERMINED AND ANY DEVIATIONS WILL BE CAUSE FOR REJECTION.				
ANGULAR DIM. ±			REMOVE ALL BURRS AND SHARP EDGES				

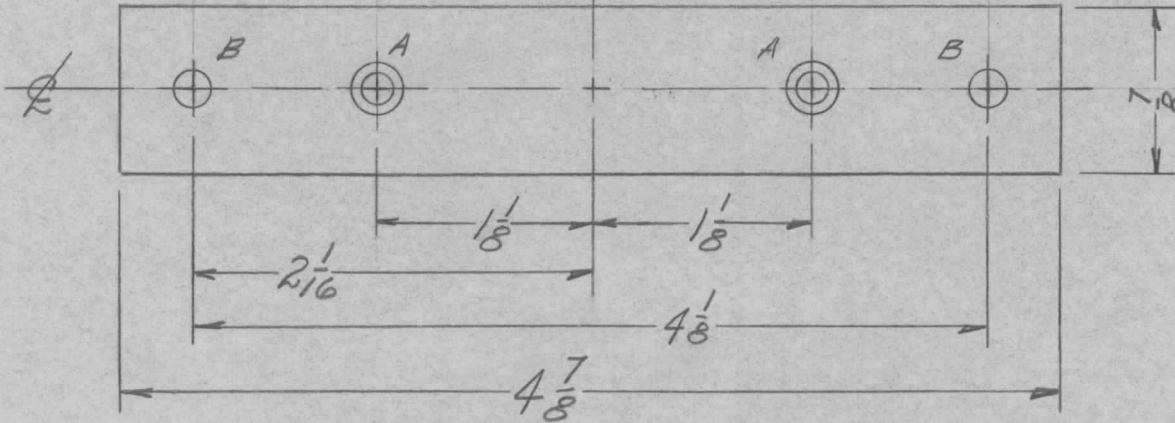
REQ. ITEM	PART NO.	DESCRIPTION	SYMBOL
.064 THICK		THE TECHNICAL MATERIEL CORP. MAMARONECK, NEW YORK	A
STOCK SIZE			
ALUMINUM			
MATERIAL		CHASSIS, CONNECTOR MTG.	
		GUIDE PIN BRACKET	
5052-H32		10-10-58	
TYPE & TEMPER	HEAT TREAT. SPEC.	DRAWN	CHECKED
SEE NOTE			
FINISH & SPEC. NO.		ELEC. DES. APP.	MECH. DES. APP.
			MS-1377

A.



B. $\frac{13}{64}$ (.203) DIA. HOLE - 2 REQ.

~~Ø~~

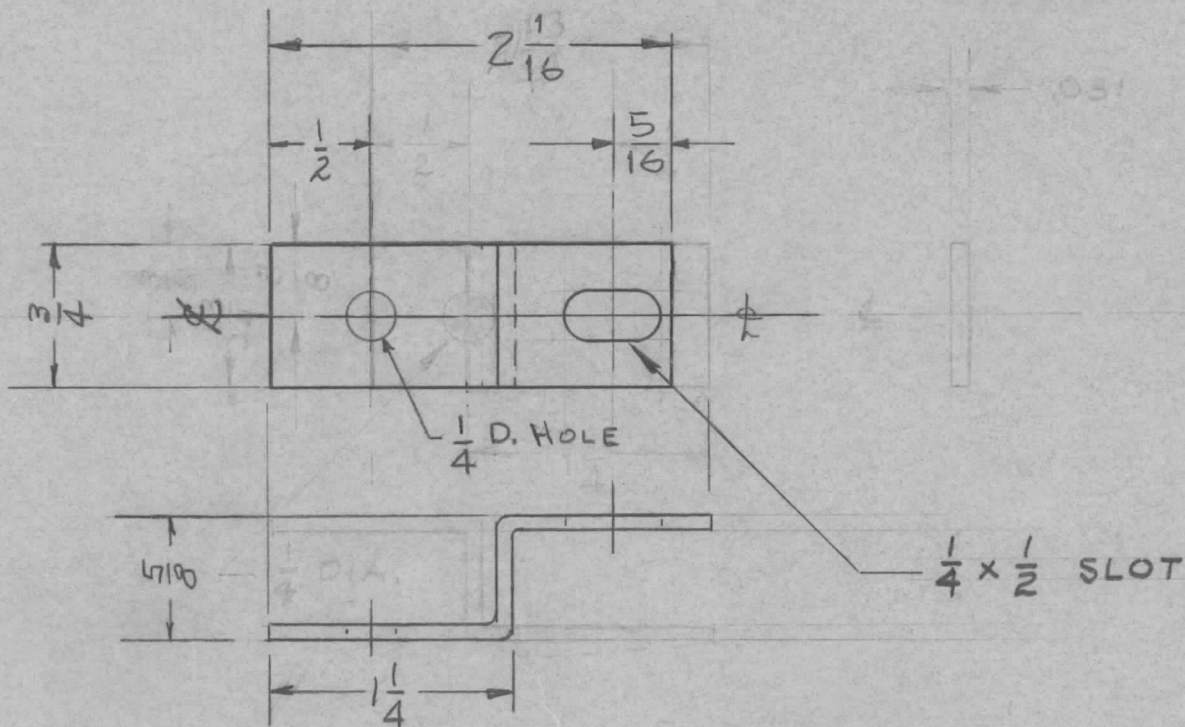


REQ. PER UNIT	USED ON		
	MODEL	ASS'Y. NO.	DATE
1	5WR-3000 JB		10-14-58

MS-1383

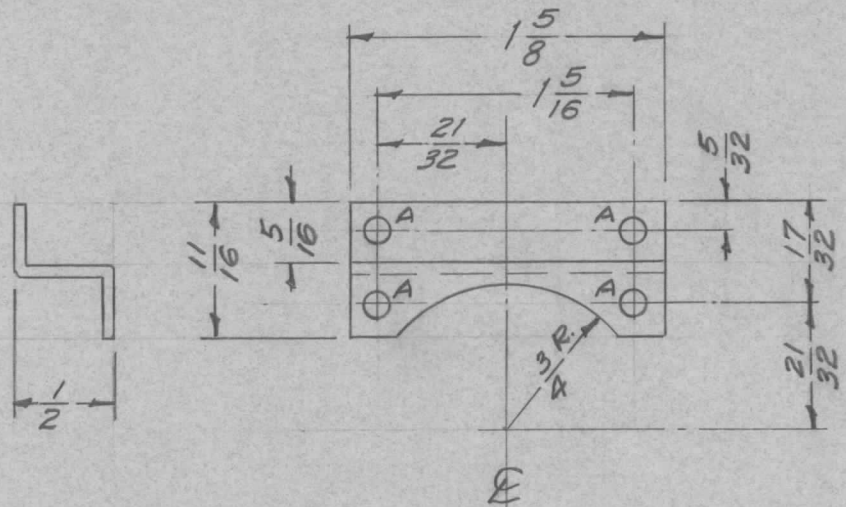
REQ. ITEM	PART NO.	DESCRIPTION	SYMBOL				
	.081 THICK	THE TECHNICAL MATERIEL CORP. MAMARONECK, NEW YORK MOUNTING BRACKET JUNCTION BOX COVER					
	STOCK SIZE						
	ALUMINUM						
	MATERIAL						
ISSUE	ITEM	CHANGED FROM	DATE	CH. NO.	DRAFTS	CHECKER	ENG. APP.
TOLERANCES		SCALE: FULL SIZE					
DEC. DIM. ±		MAXIMUM ALLOWABLE TOLERANCES HAVE BEEN DETERMINED AND ANY DEVIATIONS WILL BE CAUSE FOR REJECTION.					
FRAC. DIM. ± 1/64		REMOVE ALL BURRS AND SHARP EDGES					
ANGULAR DIM. ± 0.5°		5052-H32		CD	10-14-58	guc	file
		TYPE & TEMPER		HEAT TREAT. SPEC.	DRAWN	CHECKED	FINAL APPROVAL
		S-1142 INCL CHROMATE PRIMER			guc		
		5220 RCAF BLUE SMOOTH					
		FINISH & SPEC. NO.		ELEC. DES. APP.	MECH. DES. APP.	MS-1383	

REQ. PER UNIT	USED ON			MS-1384	C
	MODEL	ASS'Y. NO.	DATE		
1	RTP-2		10-16-58		



ISSUE	ITEM	CHANGED FROM	DATE	CH. NO.	DRAFTS	CHECKER	ENG. APP.	REQ. ITEM	PART NO.	DESCRIPTION	SYMBOL	
C	1	S404 YEL IRIDITE WAS 5/01 CAUSTIC DIP	12-8 59	1001	P		EMN			THE TECHNICAL MATERIEL CORP. MAMARONECK, NEW YORK	C	
B	1	5/16" DIM WAS 1/2"	5/16/59	1021	J.C.B.	K	AW	.031	STOCK SIZE			
A	1	PC REDESIGNED	1/6/59		are	HL	AW	ALUMINUM	GUARD, MO BY PASS SWITCH			
ISSUE ITEM CHANGED FROM DATE CH. NO. DRAFTS CHECKER ENG. APP.								MATERIAL		RTP-2		
TOLERANCES			SCALE: 1/16					5052-H32	TOBILLO	10/16/58	AW	AW
DEC. DIM. ±			MAXIMUM ALLOWABLE TOLERANCES HAVE BEEN DETERMINED AND ANY DEVIATIONS WILL BE CAUSE FOR REJECTION. REMOVE ALL BURRS AND SHARP EDGES					TYPE & TEMPER	HEAT TREAT. SPEC.	DRAWN	CHECKED	FINAL APPROVAL
FRAC. DIM. ±								S404 YEL IRIDITE		RFB		
ANGULAR DIM. ±								FINISH & SPEC. NO.	ELEC. DES. APP.	MECH. DES. APP.	MS-1384	C

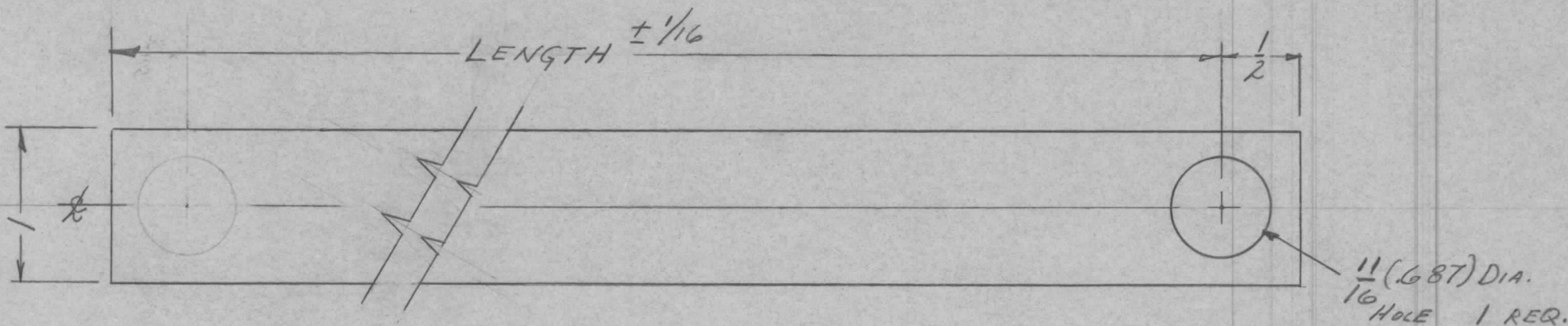
REQ. PER UNIT	USED ON			MS-1388	A
	MODEL	ASS'Y. NO.	DATE		
1	RSC-2 Mod Kit	5395	10-20-58		



A - $\frac{9}{64}$ (.140) D. 4 Req.

REQ.	ITEM	PART NO.	DESCRIPTION				SYMBOL
		.051 THK.	THE TECHNICAL MATERIEL CORP.				
		STOCK SIZE	MAMARONECK. NEW YORK				
		Aluminum	BRACKET, TRANSFORMER MTG.,				
		MATERIAL	RSC-2 MOD. KIT (T5)				
A	1	5404-Y-IRIDITE WAS 51 DI-CAUSTIC DIP	12-8 59	1001	P	EMN	
ISSUE	ITEM	CHANGED FROM	DATE	CH. NO.	DRAFTS	CHECKER	ENG. APP.
TOLERANCES			SCALE: FULL				
DEC. DIM. \pm			MAXIMUM ALLOWABLE TOLERANCES HAVE BEEN DETERMINED AND ANY DEVIATIONS WILL BE CAUSE FOR REJECTION.				
FRAC. DIM. \pm 1/64			REMOVE ALL BURRS AND SHARP EDGES				
ANGULAR DIM. \pm							
5052-H32		16 19/20/58	FILE	FILE	FILE	FILE	FILE
TYPE & TEMPER		HEAT TREAT. SPEC.	DRAWN	CHECKED	FINAL APPROVAL		
5404 Y/2 IRIDITE		P.L.K.	FILE	FILE	MS-1388 A		
FINISH & SPEC. NO.		ELEC. DES. APP.	MECH. DES. APP.				

REQ. PER UNIT 1	USED ON		MS-1389 A
	MODEL CAB-7	ASS'Y. NO.	



MS-1389-18.31

TMC DWG No

LENGTH IN INCHES

EXAMPLE 18.31 = 18 ⁵/₁₆"
18.00 = 18"

SEE APPROPRIATE ML LIST FOR LENGTH REQ.

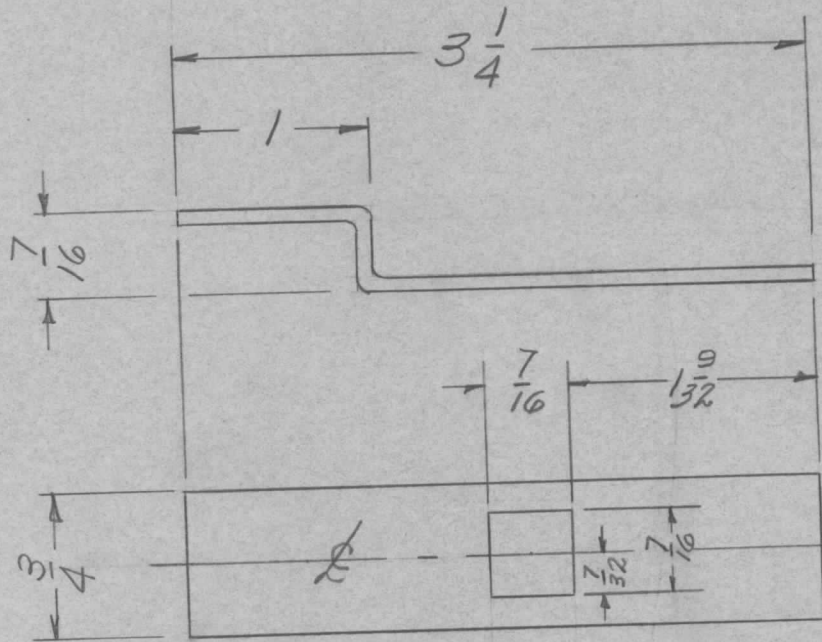
UNLESS OTHERWISE SPECIFIED DIMENSIONS ARE IN INCHES AND INCLUDE CHEMICALLY APPLIED OR PLATED FINISHES

DECIMALS	TOLERANCES	FRACTIONS
.X ± .05		± 1/64
.XX ± .01		ANGLES ± 0° 30'
.XXX ± .005		

CUT HERE
GUARANTEED
2-66

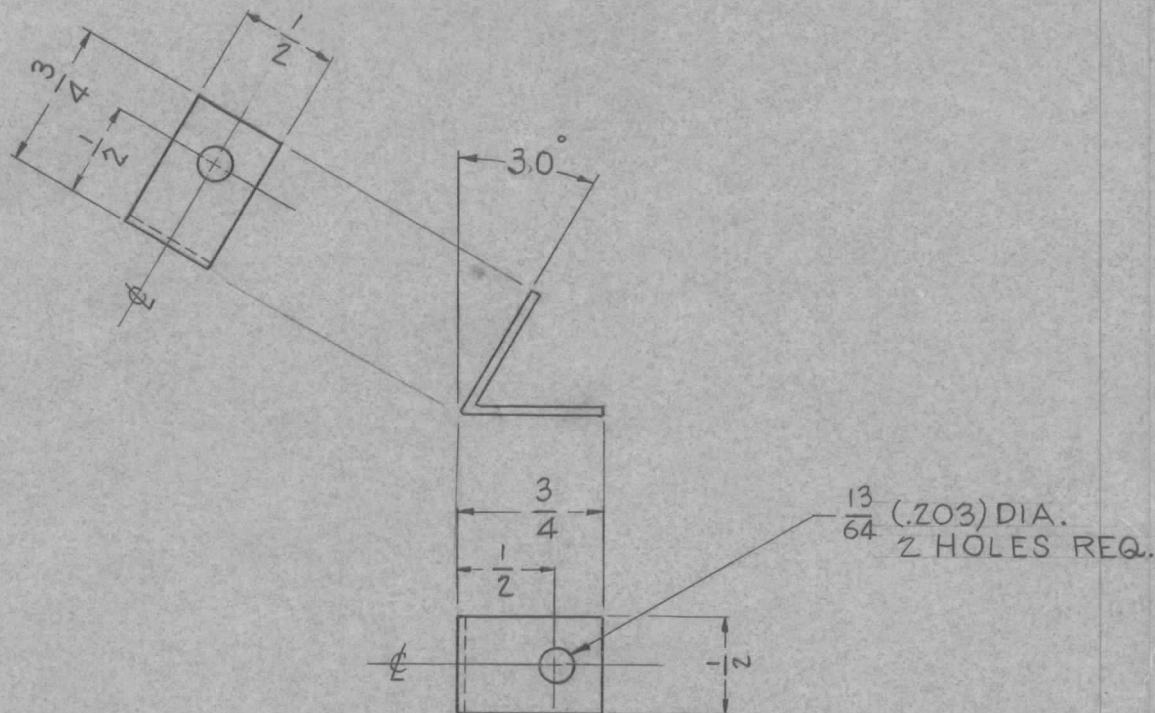
REQ.	ITEM	PART NO.	DESCRIPTION				SYMBOL
		.032 THICK STOCK SIZE	THE TECHNICAL MATERIEL CORP. MAMARONECK, NEW YORK				
		COPPER	STRAP, GROUND				CAB-7
		MATERIAL					
A	1	ONE HOLE DELETED PLATING WAS NICKEL	13/16/58	1	16		
ISSUE	ITEM	CHANGED FROM	DATE	CH. NO.	DRAFTS	CHECKER	ENG. APP.
TOLERANCES			SCALE:				
DEC. DIM. ±							
FRAC. DIM. ±							
ANGULAR DIM. ±							
MAXIMUM ALLOWABLE TOLERANCES HAVE BEEN DETERMINED AND ANY DEVIATIONS WILL BE CAUSE FOR REJECTION.				REMOVE ALL BURRS AND SHARP EDGES			
TYPE & TEMPER		HEAT TREAT. SPEC.	DRAWN	CHECKED	FINAL APPROVAL		
5245 SILVER PLATE					MS-1389 A		
FINISH & SPEC. NO.			ELEC. DES. APP.	MECH. DES. APP.			

REQ. PER UNIT	USED ON			MS-1390 A
	MODEL	ASS'Y. NO.	DATE	
1	RTF-2	1/C	10-28-58	



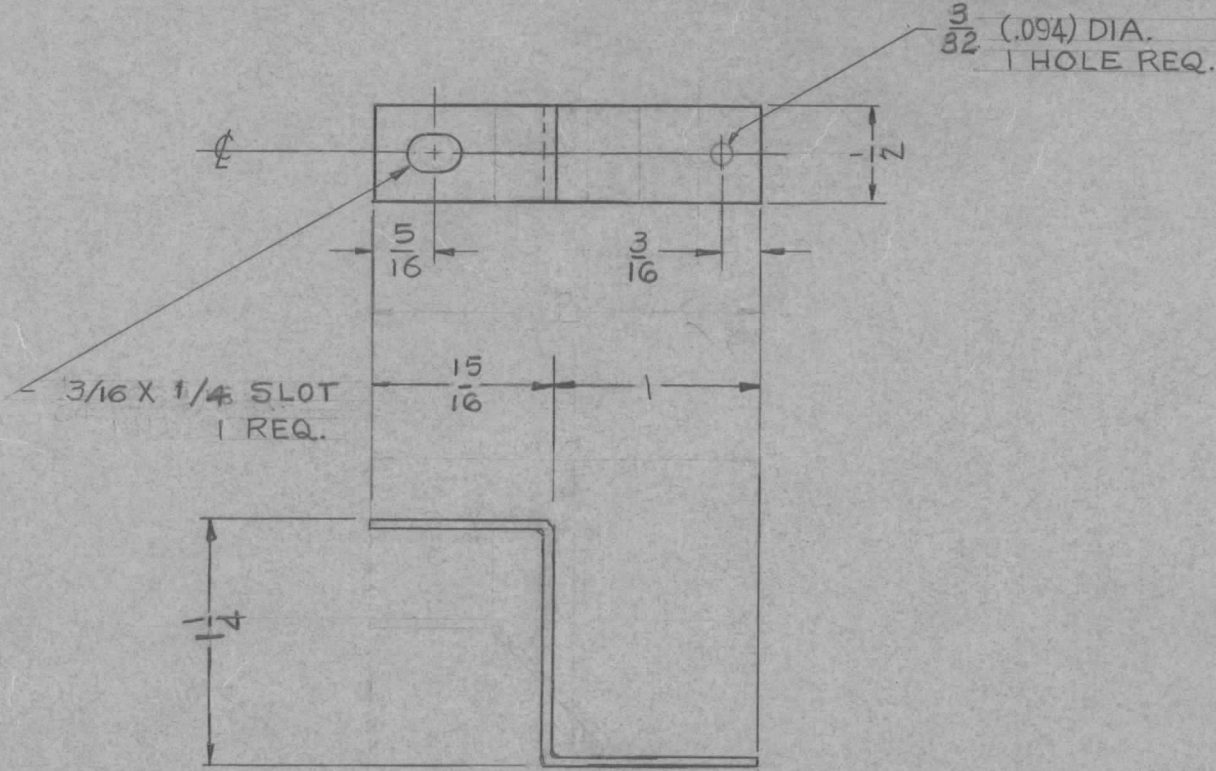
						REQ. ITEM	PART NO.	DESCRIPTION			SYMBOL
						.081 THICK		THE TECHNICAL MATERIEL CORP.			
						STOCK SIZE		MAMARONECK. NEW YORK			
						ALUMINUM		CLAMP, PLATE			
						MATERIAL					
A	1	5404-YEL-IRIDITE WAS SIDIC CAUSTIC DIP	12-8 59	1001	P	EMN	5052-H32	oxa	10/28/58 cuc	NDa	APL
ISSUE ITEM		CHANGED FROM	DATE	CH. NO.	DRAFTS	CHECKER	ENG. APP.				
TOLERANCES			SCALE: FULL SIZE								
DEC. DIM. \pm			MAXIMUM ALLOWABLE TOLERANCES HAVE BEEN DETERMINED AND ANY DEVIATIONS WILL BE CAUSE FOR REJECTION.			TYPE & TEMPER			HEAT TREAT. SPEC.		
FRAC. DIM. \pm			REMOVE ALL BURRS AND SHARP EDGES			5404-YEL-IRIDITE			DRAWN		
ANGULAR DIM. \pm						FINISH & SPEC. NO.			CHECKED		
									FINAL APPROVAL		
									MS-1390 A		

REQ. PER UNIT	USED ON			MS-1396	B
	MODEL	ASS'Y. NO.	DATE		
1	RTF-2	P/O POWER AMP	10-31-58		



REQ.	ITEM	PART NO.	DESCRIPTION			SYMBOL	
		.064	THE TECHNICAL MATERIEL CORP.				
		STOCK SIZE	MAMARONECK, NEW YORK				
B	1	5404-YEL-IRIDITE WAS SILICAUSTIC DIP	12-8 59	1001	EMN	BRACKET, ANGLE	
A	1	30° WAS 60°	11/6/59	ARC	EMN		
ISSUE	ITEM	CHANGED FROM	DATE	CH. NO.	DRAFTS	CHECKER	ENG. APP.
TOLERANCES			SCALE:				
DEC. DIM. ±			MAXIMUM ALLOWABLE TOLERANCES HAVE BEEN DETERMINED AND ANY DEVIATIONS WILL BE CAUSE FOR REJECTION:				
FRAC. DIM. ± 1/64			REMOVE ALL BURRS AND SHARP EDGES				
ANGULAR DIM. ±							
		5052-H32			JOHN C. BIELE	AD	070
		TYPE & TEMPER	HEAT TREAT. SPEC.		DRAWN	CHECKED	FINAL APPROVAL
		5404-YEL-IRIDITE			REF		MS-1396
		FINISH & SPEC. NO.			ELEC. DES. APP	MECH. DES. APP	B

REQ. PER UNIT	USED ON			MS-1399	G
	MODEL	ASS'Y. NO.	DATE		
1	RTF-2	P/O POWER AMP	10-31-58		



ISSUE	ITEM	CHANGED FROM	DATE	CH. NO.	DRAFTS	CHECKER	ENG. APP.	REQ. ITEM	PART NO.	DESCRIPTION	SYMBOL				
C	1	$\frac{3}{16} \times \frac{1}{4}$ SLOT WAS $\frac{3}{16} \times \frac{5}{16}$ SLOT	8/9/60	2674	RU		Hile		.064	THE TECHNICAL MATERIEL CORP. MAMARONECK, NEW YORK BRACKET, SUPPORT CAPACITOR					
B	+	5409-Y-IRIDITE WAS S101 CAUSTIC DIP	12-8 59	1001	P		EMN		STOCK SIZE						
A		Pc REDESIGNED	1/6/59		roc		Hile		ALUMINUM						
									MATERIAL						
TOLERANCES			SCALE:					5052-H32		JOHN C BIELE	Hile	M. O'Connell			
DEC. DIM. \pm			MAXIMUM ALLOWABLE TOLERANCES HAVE BEEN DETERMINED AND ANY DEVIATIONS WILL BE CAUSE FOR REJECTION: REMOVE ALL BURRS AND SHARP EDGES					TYPE & TEMPER	HEAT TREAT. SPEC.	DRAWN	CHECKED	FINAL APPROVAL			
FRAC. DIM. \pm															
ANGULAR DIM. \pm															
								5404-YEL-IRIDITE			RFB	MS-1399	G		
								FINISH & SPEC. NO.		ELEC. DES. APP	MECH. DES. APP				