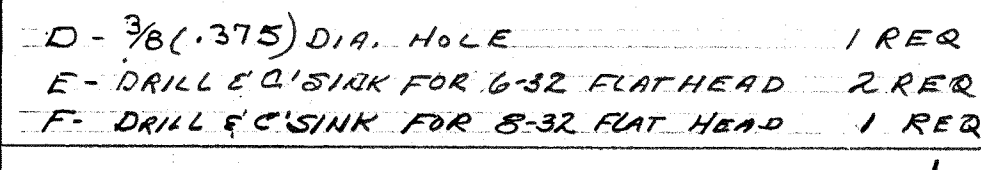
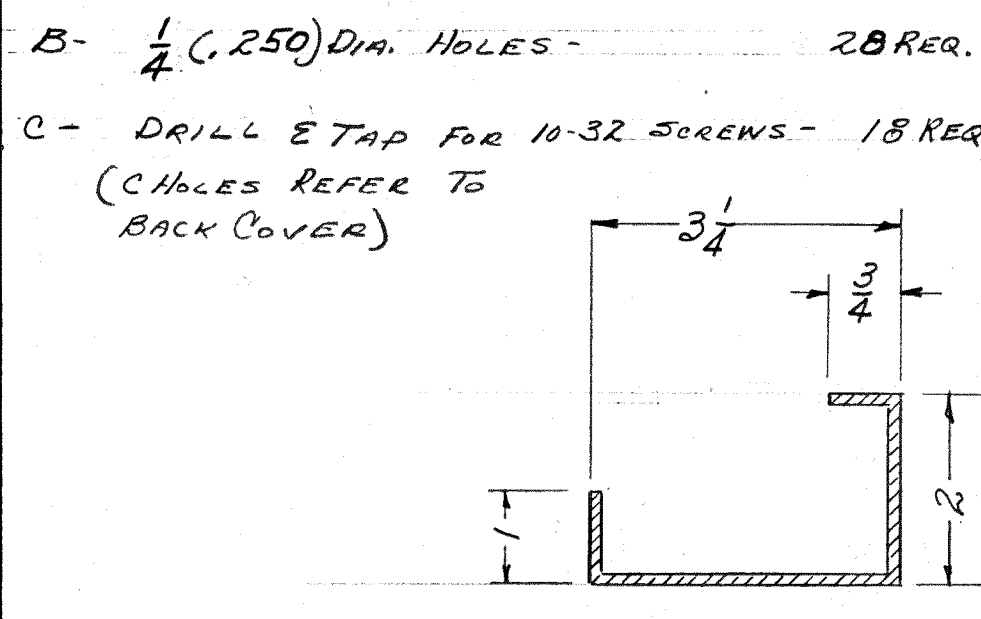
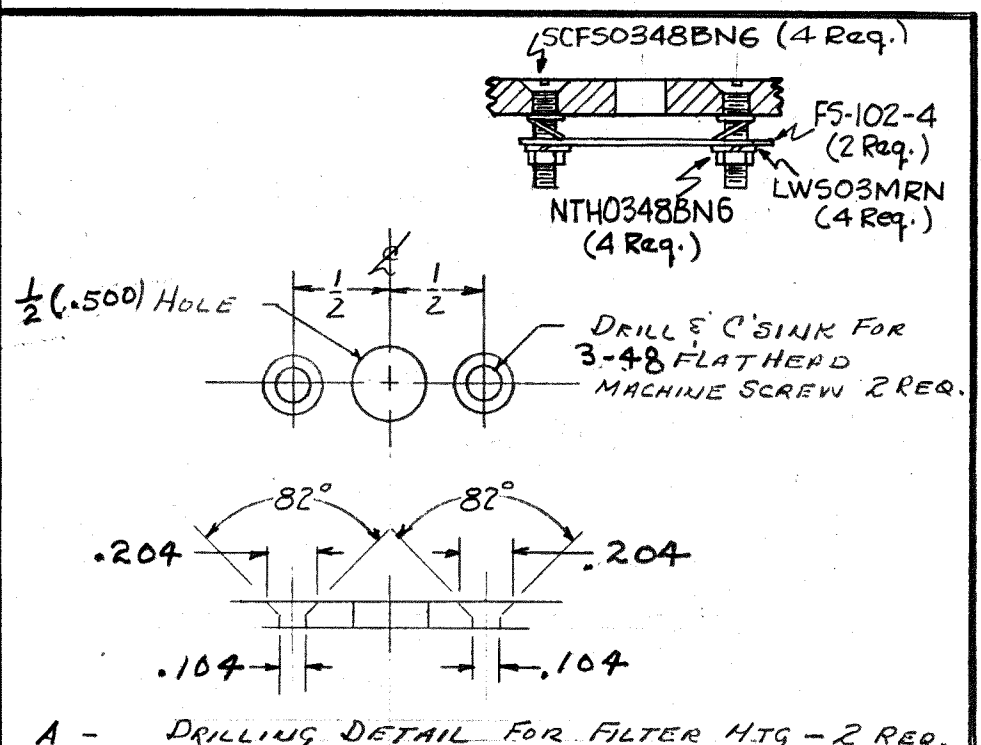
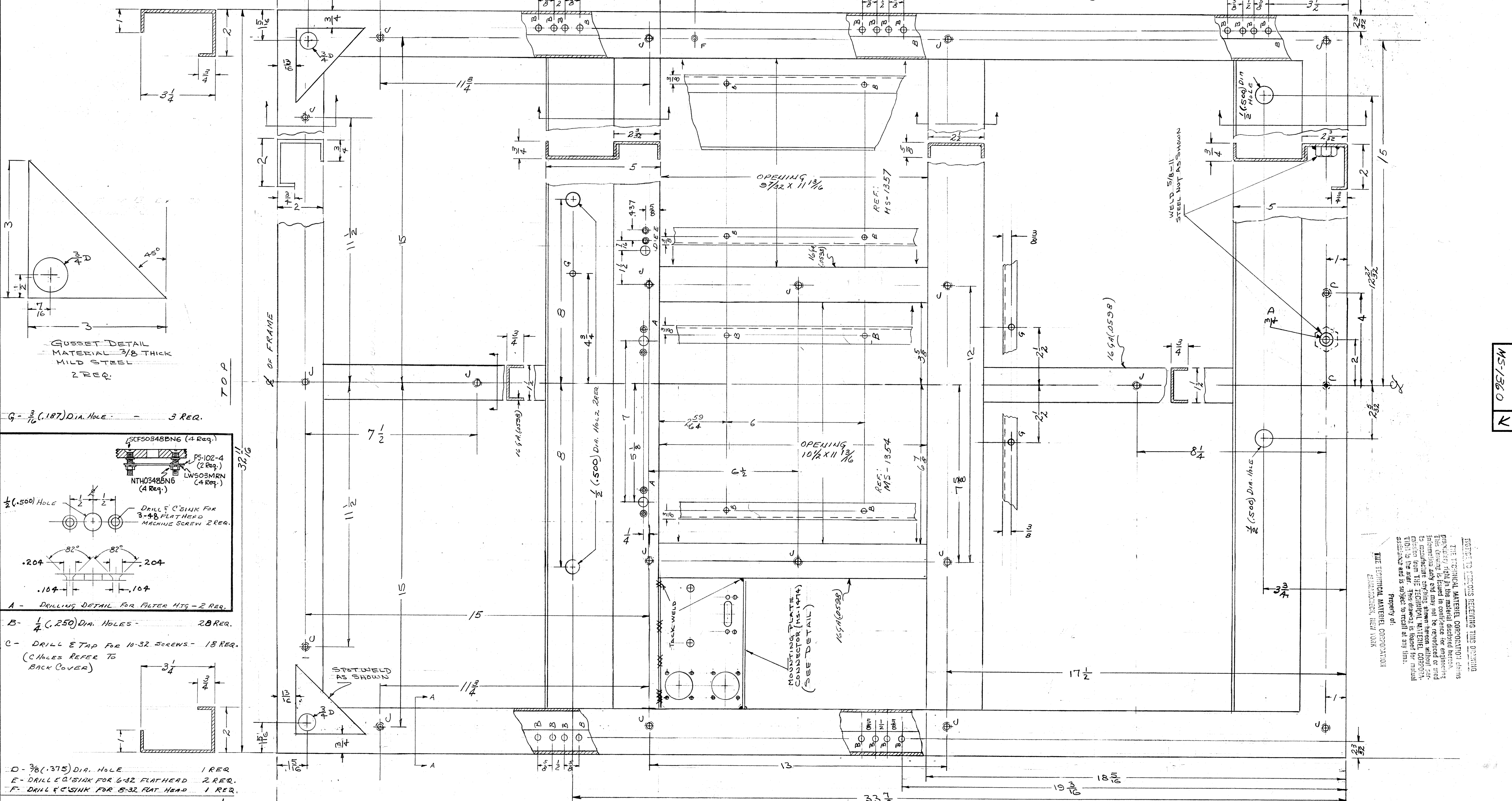


IF IT IS FOUND DESIRABLE TO CHANGE ANY TOLERANCE OR OTHER DETAIL SPECIFIED ON THIS DRAWING NOTIFY THE PURCHASER PROMPTLY.
 MAXIMUM ALLOWABLE TOLERANCES HAVE BEEN DETERMINED AND DEVIATIONS WILL BE CAUSE FOR REJECTION.
 REMOVE ALL BURRS AND SHARP EDGES



ISSUE	ITEM	CHANGED FROM	DATE	CH. NO.	DRAFTS	CHECKER	ENG. APP.
C	1	3-48 CHAMFER DETAIL WAS 6-32	12/15/58		616	JUR	
B	1	DRILLING WAS LOCATED 60 1/2 OF C/TAP HOLES	12/15/58		555	MC	
A	1	DIMENSIONS CHANGED	11/15/58				

ISSUE	ITEM	CHANGED FROM	DATE	CH. NO.	DRAFT	CK	APP
K	1	SEE SHT. 7	12/22/58		JMD	CE	
J	1	SEE SHEET 1 OF 12	3-9-58		15893	WHD	
H	1	SEE SHEET 11 OF 12	2-15-58		18742	CE	
G	1	SEE SHEET 12 OF 12	11-6-58		5807	RL	
F	1	REVISION LETTER CLARIFIED AND CUSTOMER ADDED TO 'A' HOLES	11/16/58		4019	DM	
E	1	3-48 CHAMFER DETAIL WAS 6-32	12/15/58		555	MC	
D	1	MS-1474 & DETAIL ADDED TO THIS WAS 5/16 1 1/2 DIA WAS 1 3/8	11/15/58		668	HL	

NOTES
 MATERIAL 12 GA MILD STEEL UNLESS NOTED OTHERWISE.

REQ. PER UNIT	MODEL	PROJECT NO.	ASBY. NO.	DATE	USED ON

REG. ITEM	PART NO.	DESCRIPTION	SYMBOL
SEE S-396		THE TECHNICAL MATERIEL CORP. MAMARONECK, NEW YORK	
		CABINET REAR VIEW	
		10-8-58	REB
		MECH. DES. APP.	REB
		FINAL APPROVAL	REB
		SEE - 396	
		FINISH & SPEC. NO.	

PROPERTY OF THE TECHNICAL MATERIEL CORPORATION
 MANHATTAN, NEW YORK

MS-1360 K