

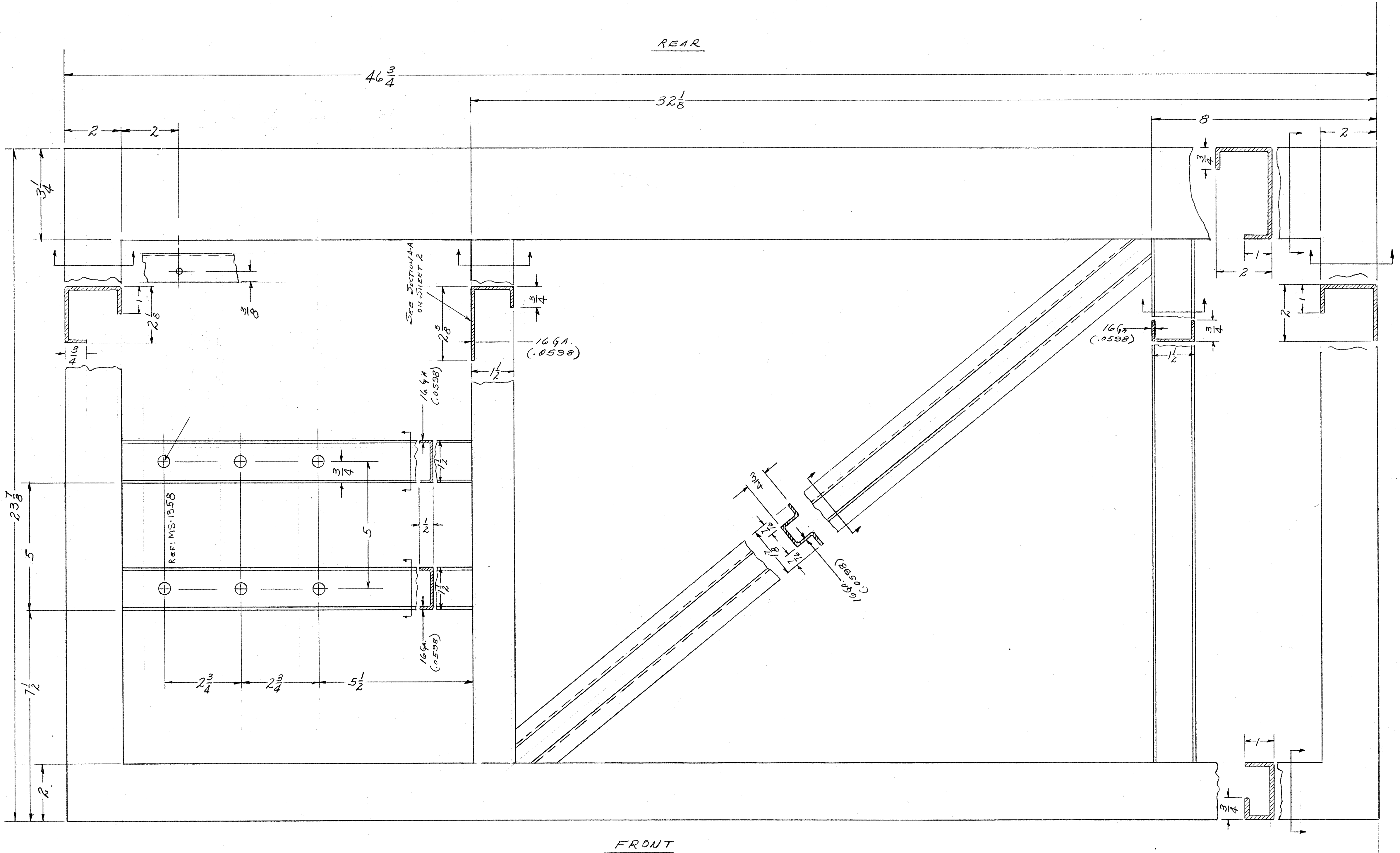
IF IT IS FOUND DESIRABLE TO CHANGE ANY TOLERANCE OR OTHER DETAIL SPECIFIED ON THIS DRAWING NOTIFY THE PURCHASER PROMPTLY.
 MAXIMUM ALLOWABLE TOLERANCES HAVE BEEN DETERMINED AND DEVIATIONS WILL BE CAUSE FOR REJECTION. REMOVE ALL BURRS AND SHARP EDGES.

NOTICE TO PERSONS RECEIVING THIS DRAWING

THE TECHNICAL MATERIEL CORPORATION claims proprietary right in the materiel disclosed herein. This drawing is issued in confidence for engineering information only and may not be reproduced or used to manufacture anything shown herein without permission from THE TECHNICAL MATERIEL CORPORATION to the user. This drawing is loaned for mutual assistance and is subject to recall at any time.

Property of:
 THE TECHNICAL MATERIEL CORPORATION
 MAMARONECK, NEW YORK

A- $\frac{3}{16}$ (.187) DIA. HOLE 1 Req.



NOTE:
 ALL MEMBERS 12 GA. (.105) UNLESS NOTED OTHERWISE.

REV.	DESCRIPTION	DATE	BY	CHECKED	ENG. APP.
K	SEE SHT 7	6/22/78	20740	GE	
U	SEE SHEET 1 OF 12	3-9-66	15593	WHW	
H	SEE SHEET 11 OF 12	2-15-63	8248	RU	
G	SEE SHEETS 12 & 1	11-6-61	5807	RU	
F	Revision Letter Clarified	1/6/61	4019	WJM	
B	ADDED 'A' HOLE	1/20/59	724	AKC	
A	DIM. CHANGE 32 1/8 W x 32 1/2 H	11/12/53		AKC	

ISSUE ITEM: CHANGED FROM: DATE: CN. NO. DRAFTS: CHECKER: ENG. APP.

TOLERANCES: SCALE: 6"=10"

ALL DEC. DIM. ± .005
 OTHERS: FRACTIONAL DIM. ± .005
 ANGULAR DIM. ± .005

SEE MS-396
 DRILL, PUNCH, COMMERCIAL STOCK SIZES AND MANUFACTURERS TOLERANCES ARE NOT INCLUDED.

1	CAB-7	PROJECT NO.	10-13-58
REQ PER UNIT	MODEL	ASSY. NO.	DATE
USED ON			

REQ. ITEM	PART NO.	DESCRIPTION	SYMBOL
SEE S-396		THE TECHNICAL MATERIEL CORP. MAMARONECK, NEW YORK	
	STOCK SIZE	CABINET	
	MATERIAL	RIGHT SIDE VIEW	
	TYPE & TEMPER	10-8-58	REF
	HEAT TREAT. SPEC.	CHEKED	MECH. DES. APP.
	FINISH & SPEC. NO.	FINAL APPROVAL	

SHEET 4 OF 12 MS-1360 K

MS-1360 K