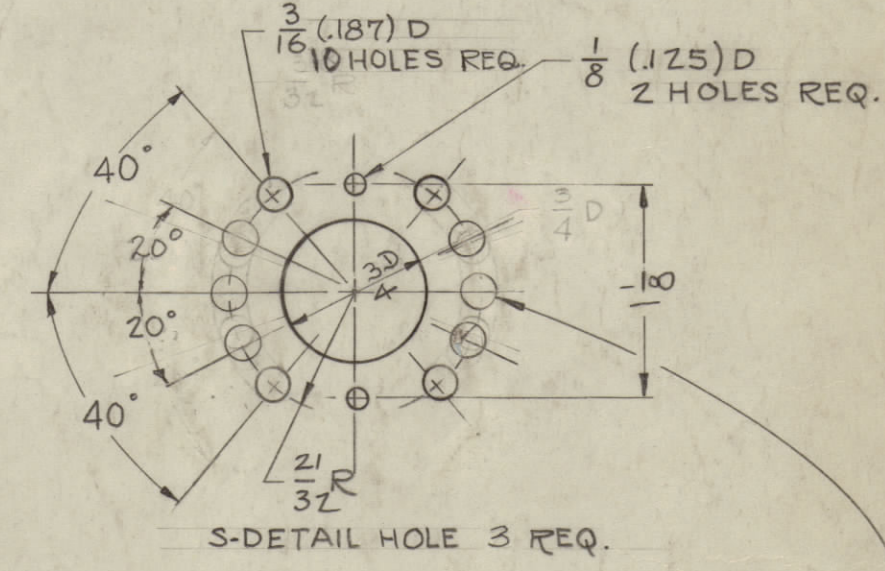
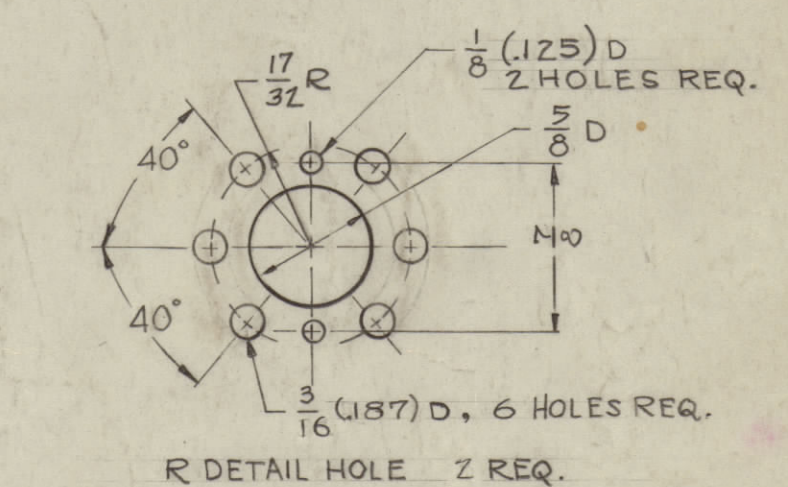
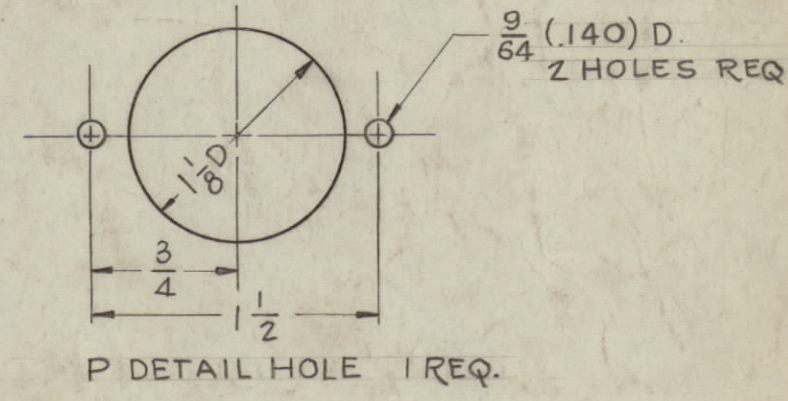
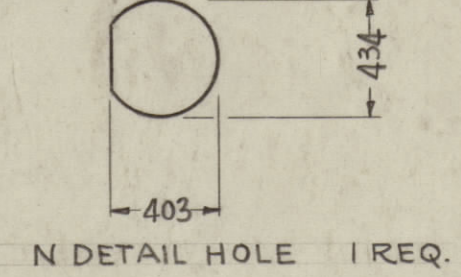


IF IT IS FOUND DESIRABLE TO CHANGE ANY TOLERANCE OR OTHER DETAIL SPECIFIED ON THIS DRAWING NOTIFY THE PURCHASER PROMPTLY.
 MAXIMUM ALLOWABLE TOLERANCES HAVE BEEN DETERMINED AND DEVIATIONS WILL BE CAUSE FOR REJECTION. REMOVE ALL BURRS AND SHARP EDGES

HOLE LEGEND

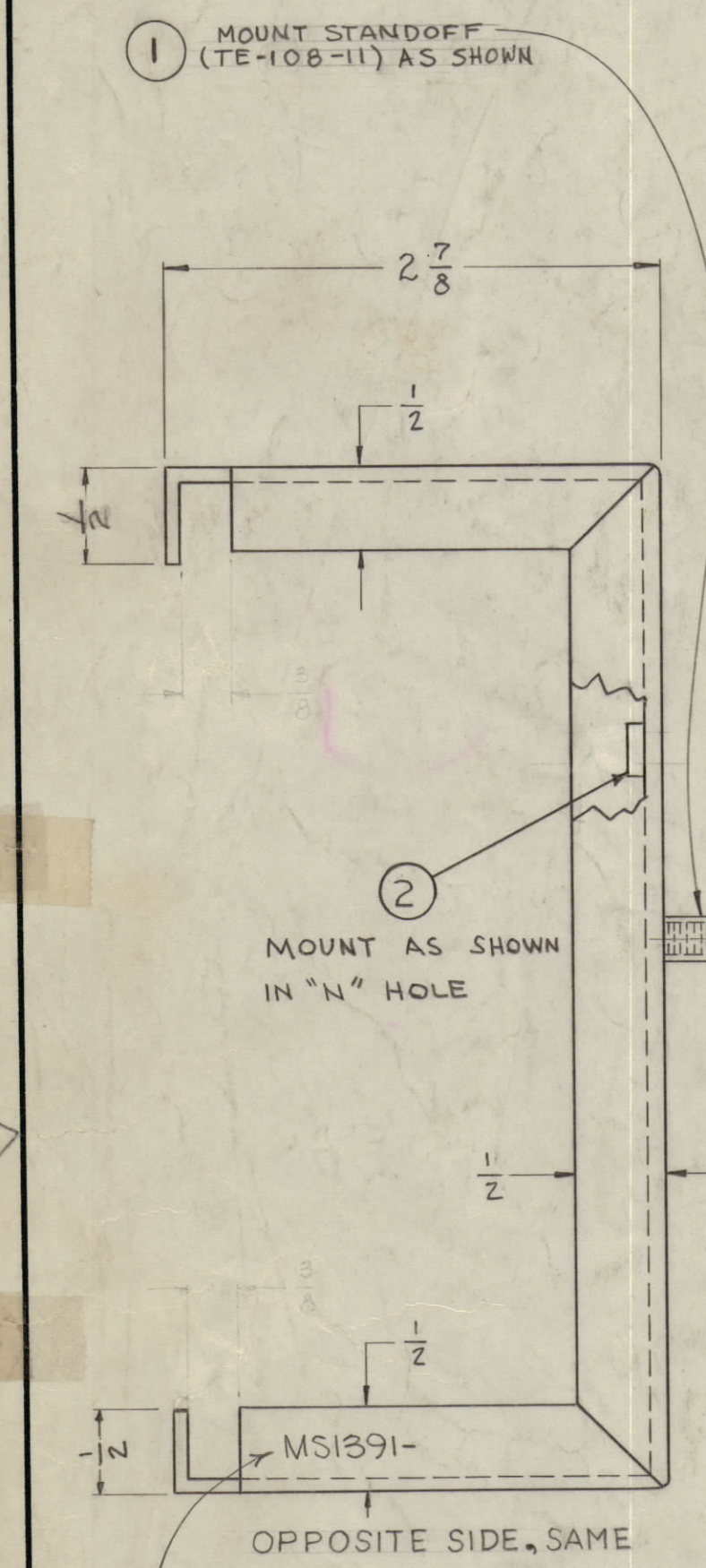
A ~ 1/8 (.125) DIA.	21 HOLES REQ.
B ~ 9/64 (.140) DIA.	1 HOLE REQ.
D ~ 11/64 (.171) DIA.	14 HOLES REQ.
E ~ #12 (.189) DIA.	1 HOLE REQ.
F ~ 13/64 (.203) DIA.	4 HOLES REQ.
G ~ 1/4 (.250) DIA.	10 " "
H ~ 5/16 (.312) DIA.	6 " "
J ~ 5/32 X 5/16 DIA. SLOTS	18 SLOTS REQ.
K ~ 13/32 (.406) DIA.	1 HOLE REQ.
L ~ 1/2 (.500) DIA.	7 HOLES REQ.
M ~ 7/8 (.875) DIA.	1 HOLE REQ.
N ~ .191 - .194 DIA.	1 HOLE REQ.



NOTE - THIS HOLE CHANGED TO 1/8 (.125) DIA. ON ONE DETAIL.

NOTICE TO PERSONS RECEIVING THIS DRAWING

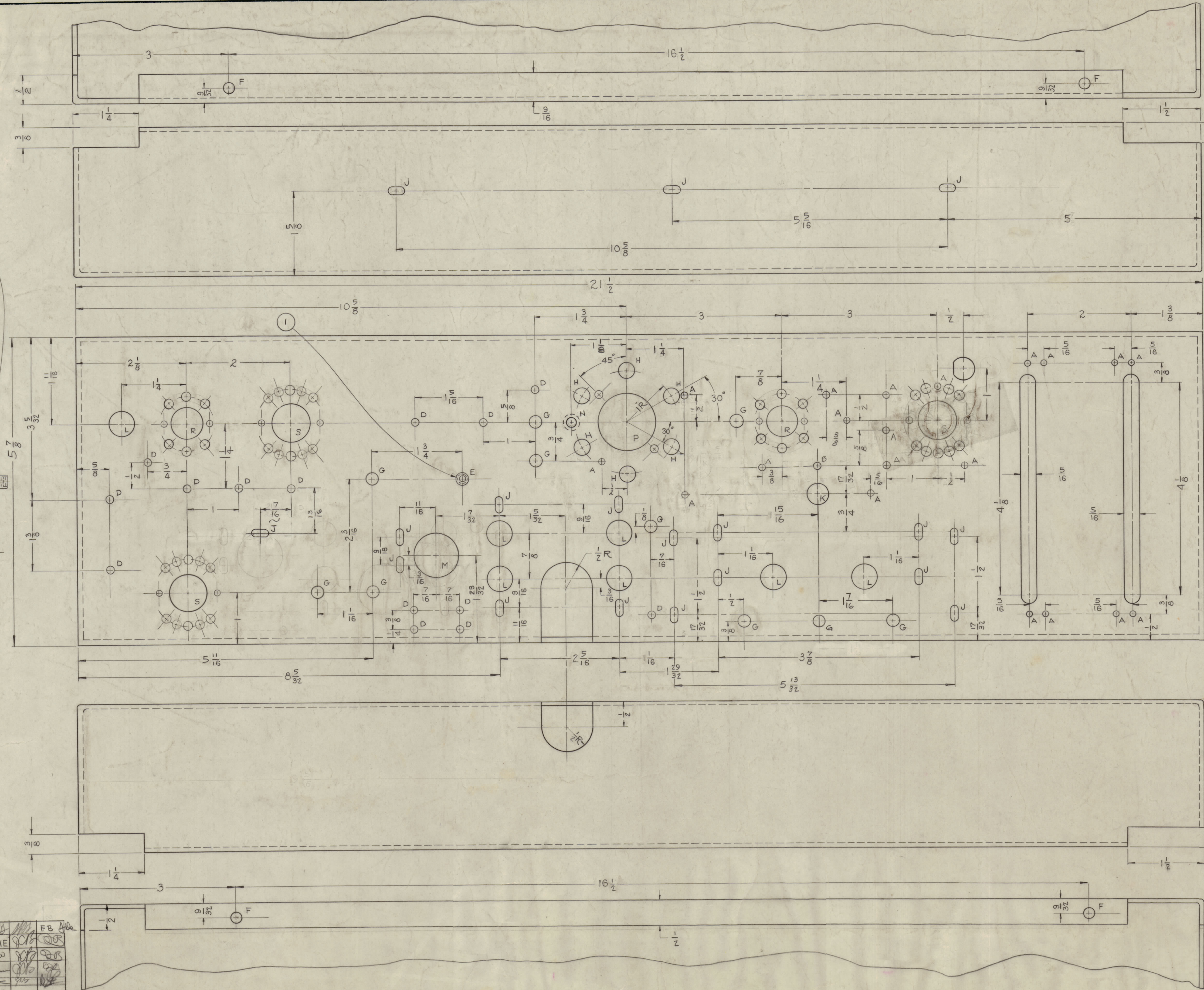
THE TECHNICAL MATERIEL CORPORATION claims proprietary right in the material disclosed hereon. This drawing is issued in confidence for engineering information only and may not be reproduced or used to manufacture anything shown hereon without permission from THE TECHNICAL MATERIEL CORPORATION to the user. This drawing is loaned for mutual assistance and is subject to recall at any time.
 Property of:
 THE TECHNICAL MATERIEL CORPORATION
 MAMARONECK, NEW YORK



MARK TMC PART NO. 1/8 HIGH GOTHIC W/LATEST REV. LETTER.

ISSUE	ITEM	CHANGED FROM	DATE	CN. NO.	DRAFTS	CHECKER	ENG. APP.
J	1	1-7/16 DIM. BET. G HOLES ADDED	4-21-47	1835	MA	EMM	FB
H	1	CHG'D 5" HOLE TO "N" ADD IT 2, CHG'D 1 1/2 TO 1 1/4	11-3-46	17154	RME	EMM	EMM
G	1	DIM 7/16 WAS 23/32	4-28-46	16143	WHD	EMM	EMM
F	2	(1) 3" SLOT WAS (1) 5" HOLE HOLE LEGEND TO UPDATED	7-29-44	11938	EMM	EMM	EMM
E	1	RELOC (1) HOLE FROM 9/16 TO 1/2	4-8-43	8723	EMM	EMM	EMM
D	1	S-404 VEL. IRRIDITE WAS S-181 CAUSTIC DIP	5-9-44	1001	EMM	EMM	EMM
C	2	RELOCATED "D" HOLE ADDED 5 "A" HOLES	11-21-43	590	EMM	EMM	EMM
B	1	ONE "A" HOLE ADDED	12-16-43	549	EMM	EMM	EMM
A	1	ONE "G" HOLE ADDED	11-2-43		EMM	EMM	EMM

TOLERANCES		SCALE:
ALL DEC. DIM. ±	FRAC. DIM. ±	DRILL PUNCH COMMERCIAL STOCK SIZES AND MANUFACTURERS TOLERANCES ARE NOT INCLUDED.
OTHERS	ANGULAR DIM. ±	



1	2	NT 129-632-4	NT, PLAIN, SPLINE	N
1	1	TE 108-11	STANDOFF, RIVET TYPE	
REQ. ITEM	PART NO.	DESCRIPTION		SYMBOL
	.064	THE TECHNICAL MATERIEL CORP. MAMARONECK, NEW YORK		
STOCK SIZE		ALUMINUM		
MATERIAL		WEIGHT PER PC.		
5052 - H32		CHASSIS, MULTIPLIER		
TYPE & TEMPER		J.C. BIELE		
DRAWN		ELEC. DES. APPL.		
CHECKED		MECH. DES. APP.		
HEAT TREAT. SPEC.		FINAL APPROVAL		
S-404 VEL. IRRIDITE		MS-1391 J		
FINISH & SPEC. NO.				

1	RTF-2	PROJECT NO.	ASSY. NO.	10-28-58	DATE
REQ. PER UNIT	MODEL	PROJECT NO.	ASSY. NO.	DATE	
USED ON					

MS-1391 J