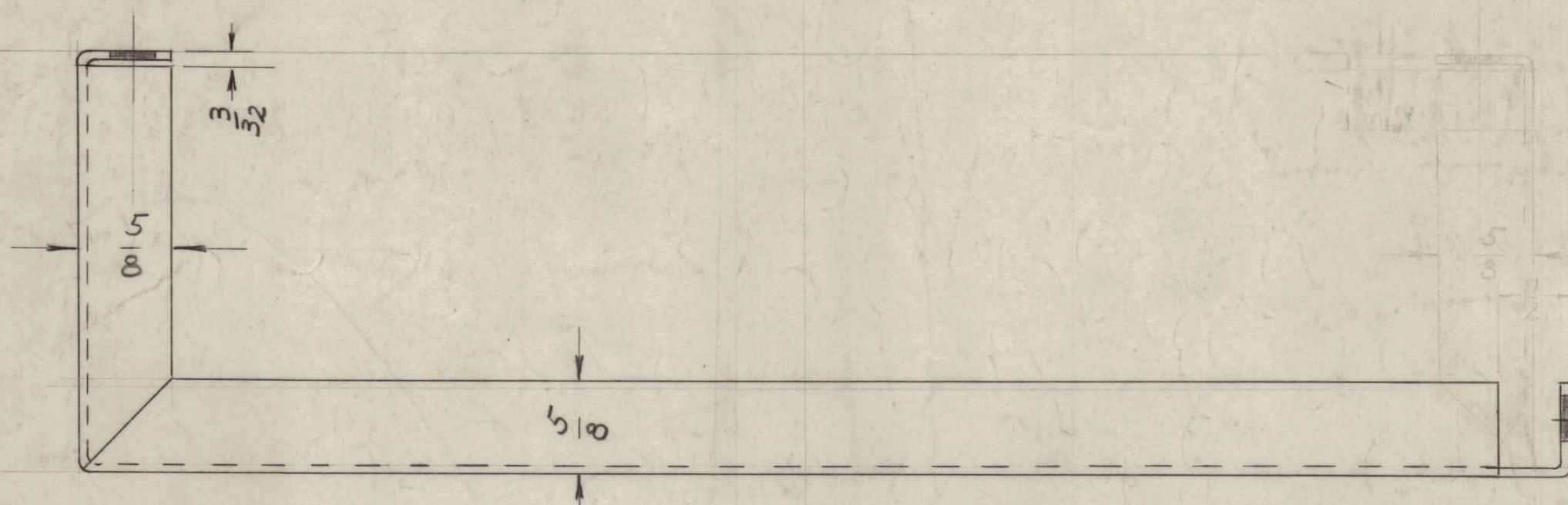
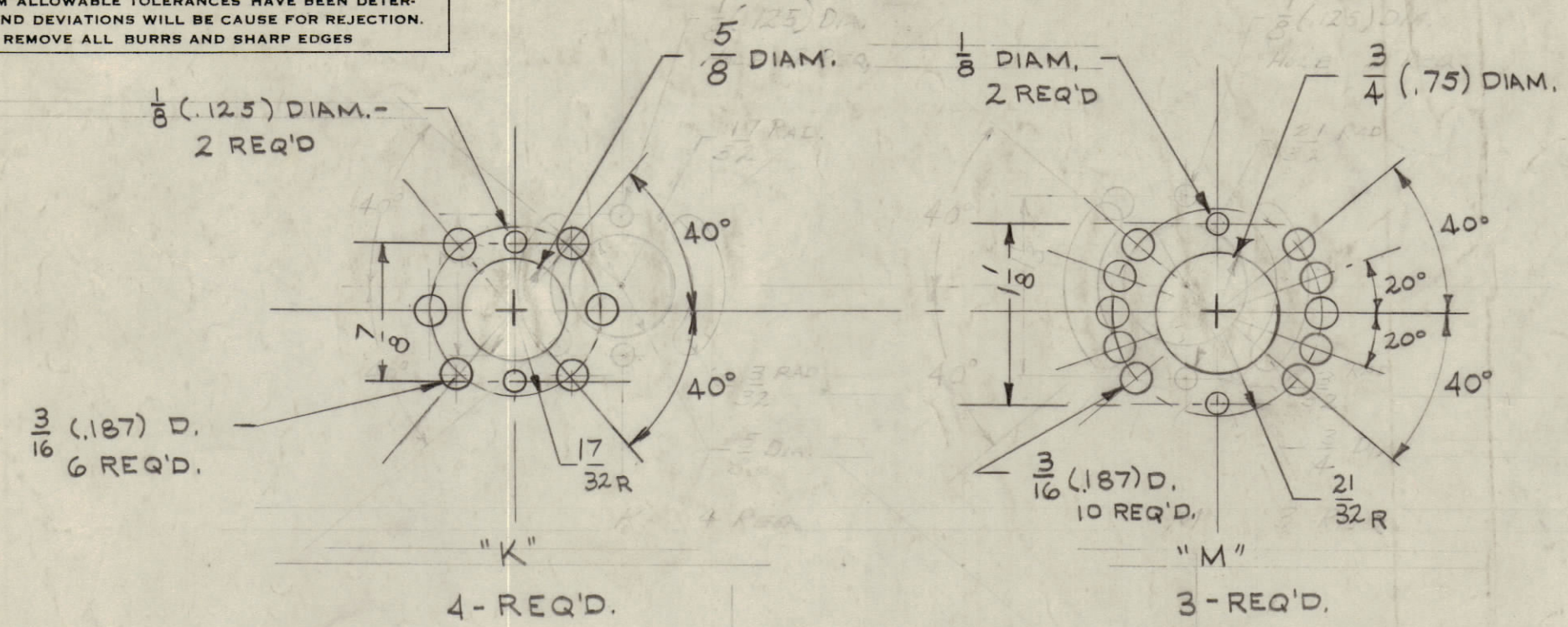
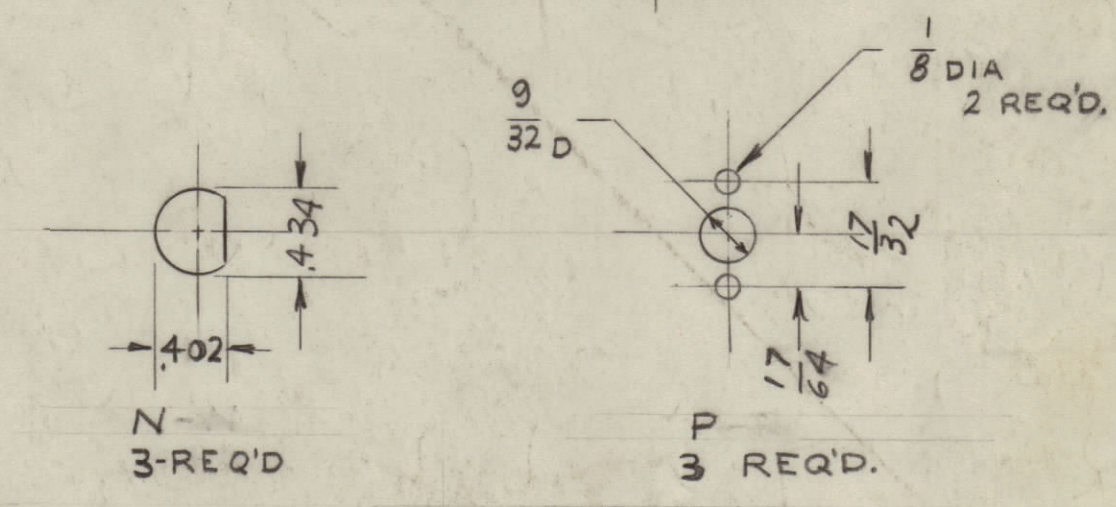
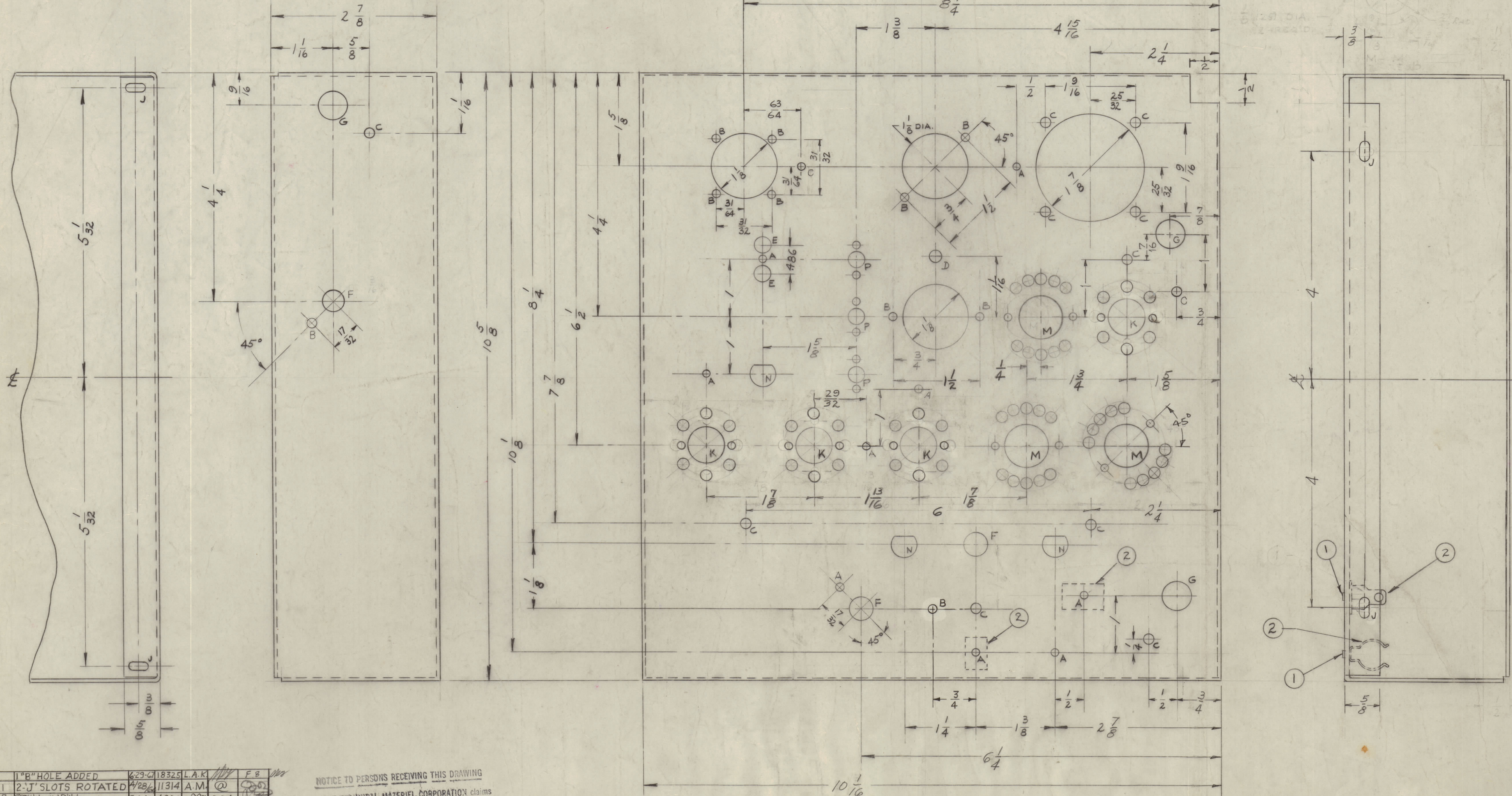


IF IT IS FOUND DESIRABLE TO CHANGE ANY TOLERANCE OR OTHER DETAIL SPECIFIED ON THIS DRAWING NOTIFY THE PURCHASER PROMPTLY.  
MAXIMUM ALLOWABLE TOLERANCES HAVE BEEN DETERMINED AND DEVIATIONS WILL BE CAUSE FOR REJECTION. REMOVE ALL BURRS AND SHARP EDGES



	REQ. D.
A - 1/8 (.125) DIA.	8
B - 9/64 (.140) "	11
C - 11/64 (.171) "	12
D - 13/64 (.203) "	1
E - 9/32 (.281) "	2
F - 13/32 (.406) "	3
G - 1/2 (.500) "	3
J - 1/64 x 1/32 SLOT	4



ISSUE	ITEM	CHANGED FROM	DATE	CH. NO.	DRAWN	CHECKER	ENG. APP.
H	1"	B HOLE ADDED	6-29-51	18325	L.A.K.		F.B.
G	1	2" J SLOTS ROTATED	4-28-51	11314	A.M.		
F	2	0.015 Hole was .012	5-16-51	4804	J.M.	J.C.B.	
E	1	K DETAIL 17/32 R HAS 7/32 R	11-4-50	3395	J.C.B.		
D	1	5-101 CAUSTIC DIP	12-15-50	1001	J.C.B.		EMV
C	2	2 MOD. DET. 'K' & 'M'	9-19-50	1441	J.C.B.		J.C.B.
B	2	1 O' Hole added	3-3-50	838	J.C.B.		J.C.B.
A	1	1 ADDER O' Hole To Plate	11-26-49				

PROPERTY OF:  
THE TECHNICAL MATERIEL CORPORATION  
MAMARONECK, NEW YORK

NOTICE TO PERSONS RECEIVING THIS DRAWING  
THE TECHNICAL MATERIEL CORPORATION claims proprietary right in the material disclosed herein. This drawing is issued in confidence for engineering information only and may not be reproduced or used to manufacture anything shown herein without permission from THE TECHNICAL MATERIEL CORPORATION to the user. This drawing is loaned for mutual assistance and is subject to recall at any time.

TOLERANCES	SCALE:
DEC. DIM. ± .005	DRILL PUNCH, COMMERCIAL STOCK
FRAC. DIM. ± 1/64	SIZES AND MANUFACTURERS
ANGULAR DIM. ±	TOLERANCES ARE NOT INCLUDED.

1	RTF-2	PROJECT NO.	ASSY. NO.	10-21-58	DATE
REQ PER UNIT	MODEL	PROJECT NO.	ASSY. NO.	DATE	USED ON

REF ID - 465

REQ. ITEM	PART NO.	DESCRIPTION	SYMBOL
2	FC-100-6	CLAMP	
2	EY-100-2	EYELET, FLAT FLANGE	
STOCK SIZE			
.064			
THE TECHNICAL MATERIEL CORP. MAMARONECK, NEW YORK			
ALUMINUM			
MATERIAL WEIGHT PER PC.			
5052-H32			
TYPE & TEMPER			
DRAWN			
ELEC. DES. APP.			
MECH. DES. APP.			
HEAT TREAT. SPEC.			
CHECKED			
FINAL APPROVAL			
5-404 YEL. IRIDITE			
FINISH & SPEC. NO.			
MS-1387H			

MS-1387 H