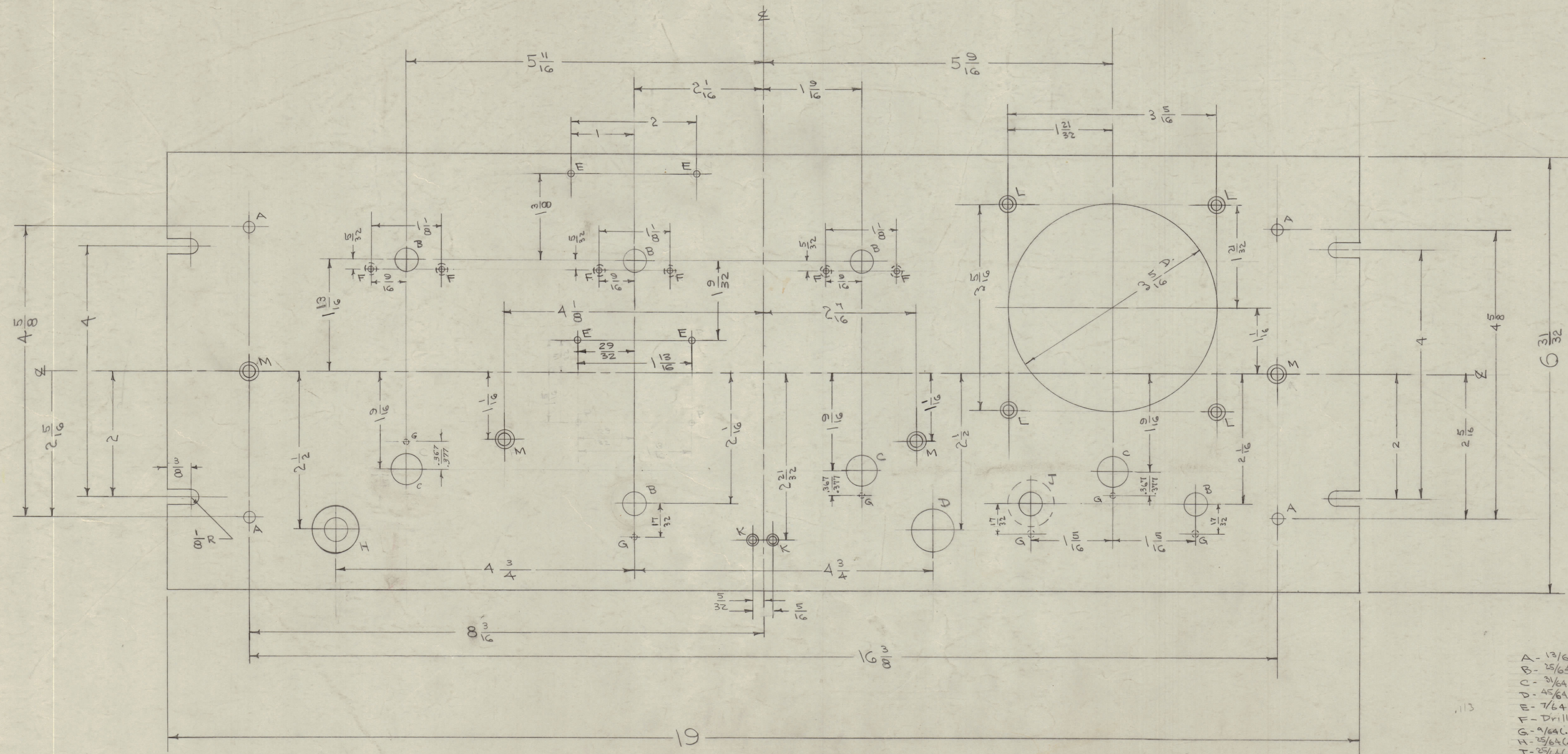


IF IT IS FOUND DESIRABLE TO CHANGE ANY TOLERANCE OR OTHER DETAIL SPECIFIED ON THIS DRAWING NOTIFY THE PURCHASER PROMPTLY.  
 MAXIMUM ALLOWABLE TOLERANCES HAVE BEEN DETERMINED AND DEVIATIONS WILL BE CAUSE FOR REJECTION. REMOVE ALL BURRS AND SHARP EDGES

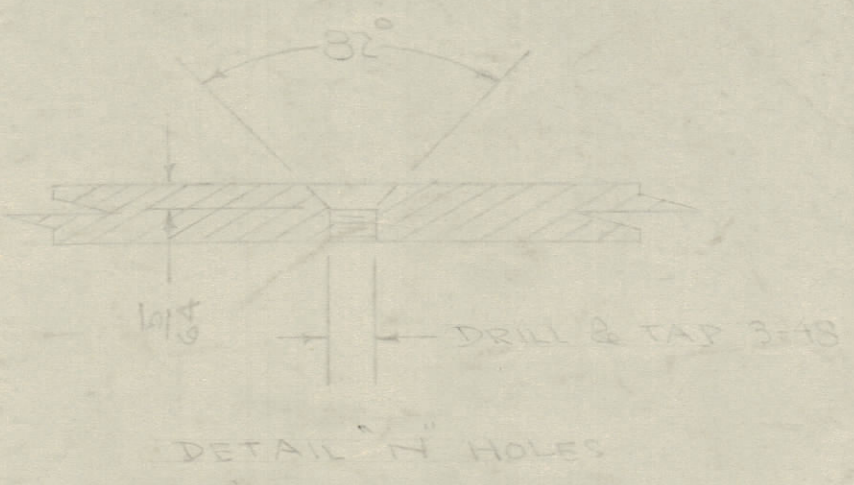
NOTICE TO PERSONS RECEIVING THIS DRAWING  
 THE TECHNICAL MATERIEL CORPORATION claims proprietary right in the material disclosed herein. This drawing is issued in confidence for engineering information only and may not be reproduced or used to manufacture anything shown herein without permission from THE TECHNICAL MATERIEL CORPORATION to the user. This drawing is loaned for mutual assistance and is subject to recall at any time.  
 Property of:  
 THE TECHNICAL MATERIEL CORPORATION  
 MAMARONECK, NEW YORK



- A - 13/64 (.203) D. 4 REQ.
- B - 25/64 (.390) D. 5 "
- C - 3/64 (.464) D. 3 "
- D - 45/64 (.703) D. 1 "
- E - 1/64 (.109) D. 4 "
- F - Drill & Tap 4-40 6 "
- G - 3/64 (.140) D X 1/8 DEEP FROM REAR G REQ.
- H - 25/64 (.390) D - 3/4 (.750) O BORE FROM FRONT 1/8 DEEP 1 REQ.
- J - 25/64 (.390) D - 3/4 (.750) " " REAR 1/8 " 1 REQ.

FRONT OF PANEL

NOTE - FINISH  
 S-404 YELLOW IRIDITE  
 S-114 - ZINC CHROMATE PRIMER  
 S-115 - SMOOTH GREY ENAMEL  
 OR PRIME & PAINT TO CUSTOMERS SPECIFICATION.  
 FRONT EDGES ONLY



HOLE	SEE DETAIL DIM X	DIM Z	DRILL & TAP	REQD PER UNIT
K	.230	#31 (.120)	4-40	2
L	.284	#27 (.144)	6-32	4
M	.337	#18 (.169)	8-32	4

REF. DWG LD-453 ENGRAVING.

REQ. ITEM	PART NO.	DESCRIPTION	SYMBOL
	3/16 THK	THE TECHNICAL MATERIEL CORP. MAMARONECK, NEW YORK	
	ALUMINUM	PANEL, FRONT	
	MATERIAL	RSC-3	
	WEIGHT PER PC.		
	2AST3		
	TYPE & TEMPER	1610/153 P.L.K.	
	HEAT TREAT. SPEC.	101/145 P.M.C.	
	SEE NOTE	CHECKED	FINAL APPROVAL
		CR# 470	MS-1378 A
		FINISH & SPEC. NO.	

ISSUE	ITEM	CHANGED FROM	DATE	CN. NO.	DRAFTS	CHECKER	ENG. APP.
A	1	S-404 YEL IRIDITE WAS 3/4 S-101 CAUSTIC 51P	1/59	1001	AB		EMN

ALL DEC. DIM. ± 1/16  
 OTHERS ANGULAR DIM. ±  
 DRILL, PUNCH, COMMERCIAL STOCK SIZES AND MANUFACTURERS TOLERANCES ARE NOT INCLUDED.

MS-1378 A