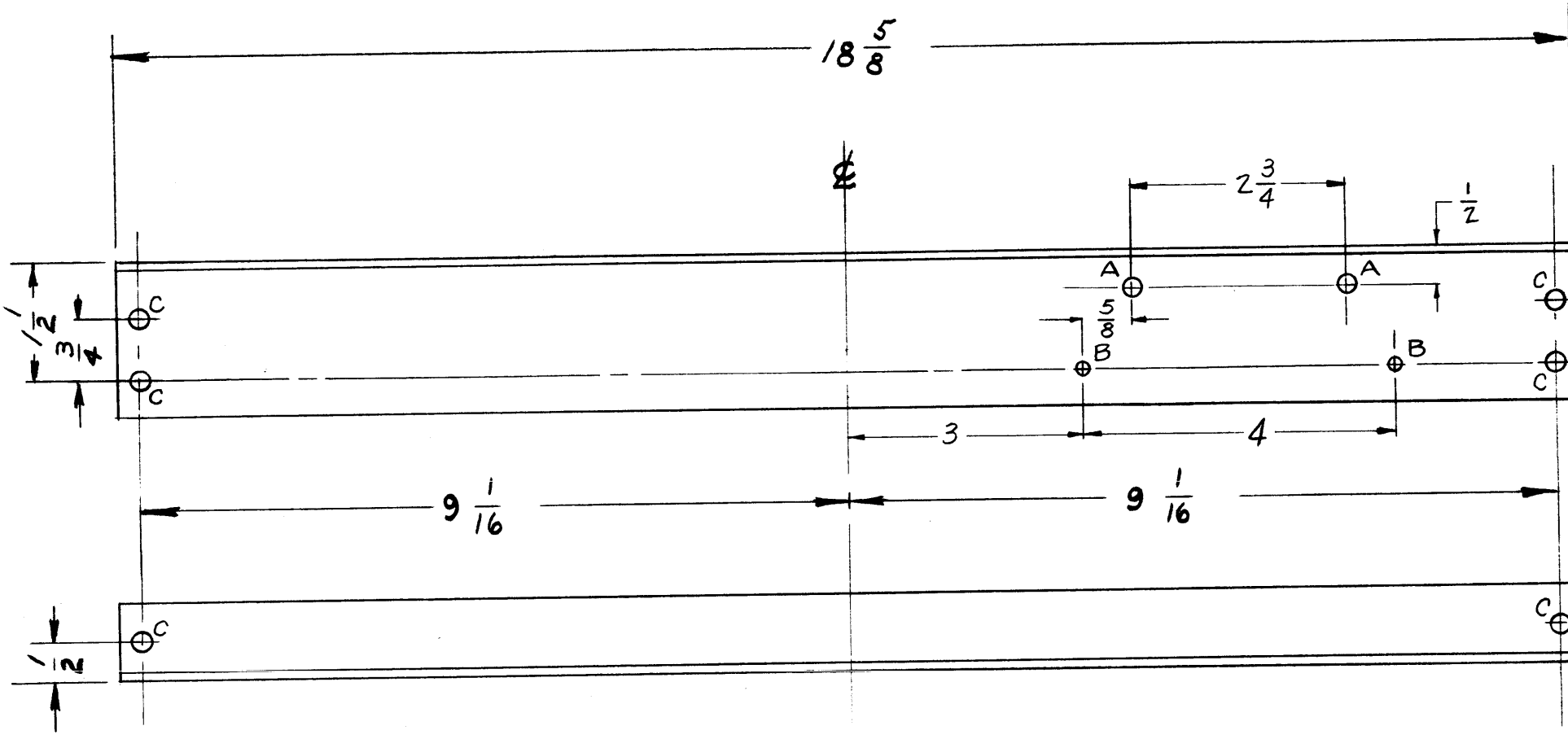


MS-1367 B

**HOLE LEGEND**  
 A ~ 1/8 (.125) DIA. 2 HOLES REQ.  
 B ~ 13/64 (.203) DIA. 2 " "  
 C ~ 15/64 (.234) DIA. 6 " "



NOTICE TO PERSONS RECEIVING THIS DRAWING

THE TECHNICAL MATERIEL CORPORATION claims proprietary right in the material disclosed hereon. This drawing is issued in confidence for engineering information only and may not be reproduced or used to manufacture anything shown hereon without permission from THE TECHNICAL MATERIEL CORPORATION to the user. This drawing is loaned for mutual assistance and is subject to recall at any time.

Property of:

THE TECHNICAL MATERIEL CORPORATION  
 MAMARONECK, NEW YORK

DIE # 6844

ISSUE	ITEM	CHANGED FROM	DATE	CH. NO.	DRAFTS	CHECKER	ENG. APP.
B	1	S-404 WAS S-101	12/15/59	1001	ARB		EMN
A	1	2 "A" HOLES ADDED "B" "	11-12-58	521	J.C.B.	HCO	

TOLERANCES: DEC. DIM. ± 1/64  
 FRAC. DIM. ±  
 ANGULAR DIM. ±

SCALE: *K*

MAXIMUM ALLOWABLE TOLERANCES HAVE BEEN DETERMINED AND ANY DEVIATIONS WILL BE CAUSE FOR REJECTION. REMOVE ALL BURRS AND SHARP EDGES

REQ. PER UNIT	MODEL	PROJECT NO.	ASS'Y. NO.	DATE
1	RTP-2			10-16-58

USED ON

REQ. ITEM	PART NO.	DESCRIPTION	SYMBOL
1	2 x 1/8	THE TECHNICAL MATERIEL CORP. MAMARONECK, NEW YORK	
ALUMINUM		STIFFENER, REAR	
MATERIAL		MAIN CHASSIS SIDE PLATES	
6063-T5		<i>TABLE</i>	<i>10-16-58</i>
TYPE & TEMPER	HEAT TREAT. SPEC.	DRAWN	CHECKED
S-404 YELLOW IRIDITE		<i>RFB</i>	<i>[Signature]</i>
FINISH & SPEC. NO.		ELEC. DES. APP.	MECH. DES. APP.
		MS 1367	B