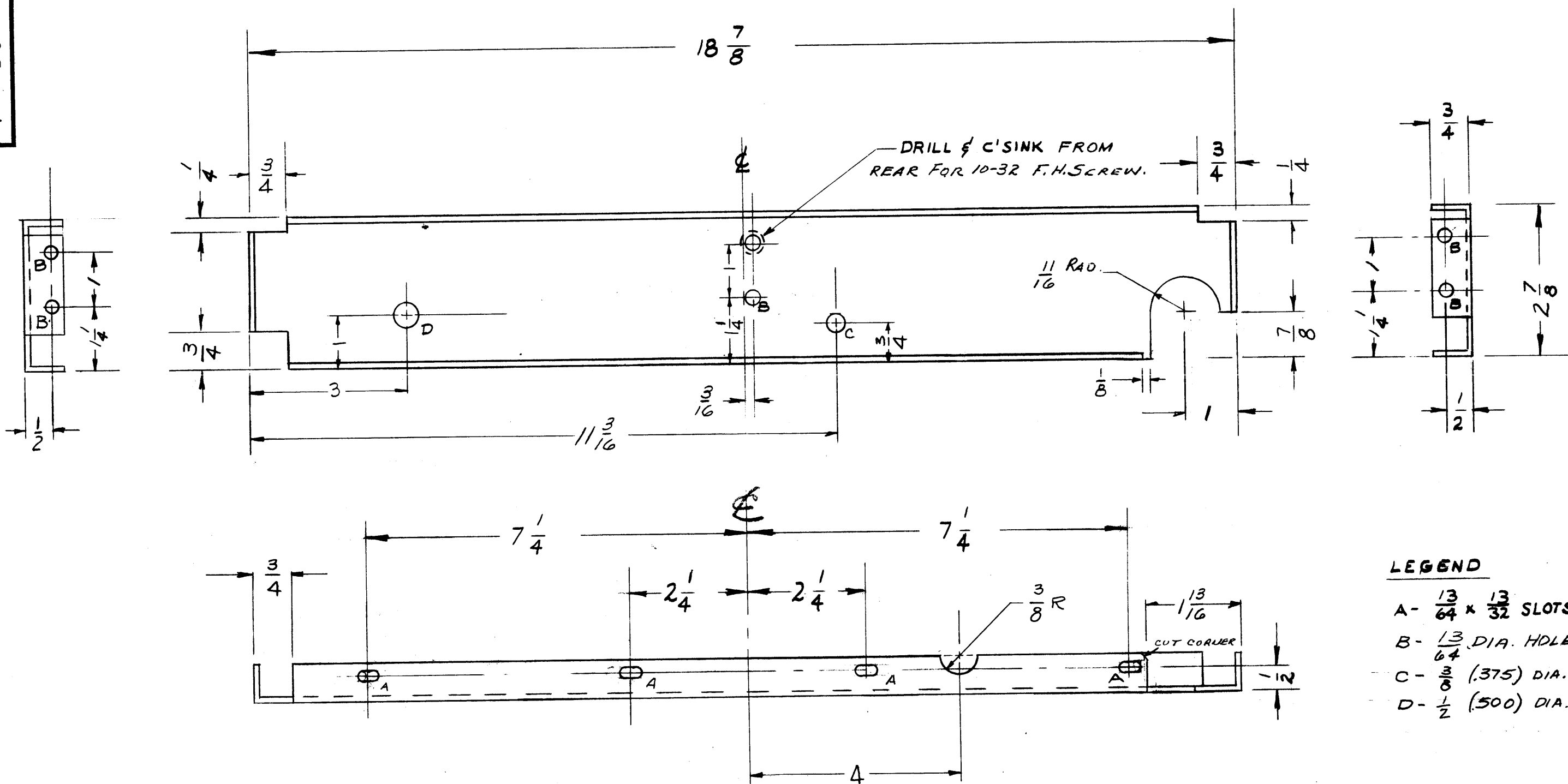


MS-1365 E



LEGEND		REQ'D.
A -	$\frac{13}{64} \times \frac{13}{32}$ SLOTS	4
B -	$\frac{13}{64}$ DIA. HOLE	5
C -	$\frac{3}{8}$ (.375) DIA. HOLE	1
D -	$\frac{1}{2}$ (.500) DIA. HOLE	1

ISSUE	ITEM	CHANGED FROM	DATE	CH. NO.	DRAFTS	CHECKER	ENG. APP.
E	1	"B" HOLES WERE $15/64$ D.	9-14-60	2945	CS		<i>[Signature]</i>
D	1	S-404 WAS S-101	12/15/59	1001	AB		EMN
C	1	CUT LIP AT $1/16$ RAD. BACK $1/8$	11/3/59	621	ave	<i>[Signature]</i>	<i>[Signature]</i>
B	1	"B" HOLES WERE 7 ADDED CIRCULAR SLOT REMOVED "B" HOLE	11/7/58	513	ave	<i>[Signature]</i>	<i>[Signature]</i>
A	1	THE NOTCH WAS $3/4$ $3/8$ R. REMOVED "B", "C", "D" HOLES ADDED	5-58	1	J.C.B.	5-58	<i>[Signature]</i>

TOLERANCES: DEC. DIM. \pm 1/64, FRAC. DIM. \pm 1/64, ANGULAR DIM. \pm 1/64

SCALE: $1/16$

MAXIMUM ALLOWABLE TOLERANCES HAVE BEEN DETERMINED AND ANY DEVIATIONS WILL BE CAUSE FOR REJECTION. REM VE ALL BURRS AND SHARP EDGES

REQ. PER UNIT	MODEL	PROJECT NO.	ASS'Y. NO.	DATE
1	RTP-2			10-16-58
USED ON				

REQ. ITEM	PART NO.	DESCRIPTION	SYMBOL
.081		THE TECHNICAL MATERIEL CORP. MAMARONECK. NEW YORK	
ALUMINUM		STIFFENER, MAIN CHASSIS	
5052-H32		RTP-2	
5-404 YELLOW IRIDITE			
FINISH & SPEC. NO.		ELEC. DES. APP. MECH. DES. APP.	
		MS-1365	E