

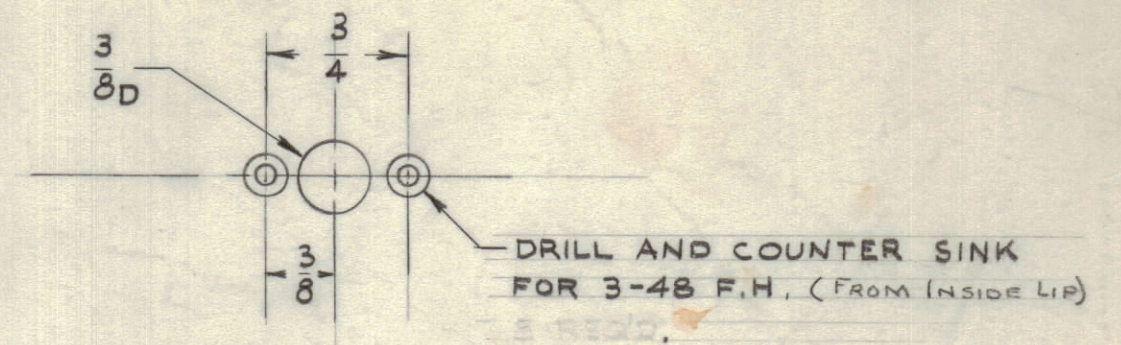
IF IT IS FOUND DESIRABLE TO CHANGE ANY TOLERANCE OR OTHER DETAIL SPECIFIED ON THIS DRAWING NOTIFY THE PURCHASER PROMPTLY.

MAXIMUM ALLOWABLE TOLERANCES HAVE BEEN DETERMINED AND DEVIATIONS WILL BE CAUSE FOR REJECTION. REMOVE ALL BURRS AND SHARP EDGES

**NOTICE TO PERSONS RECEIVING THIS DRAWING**

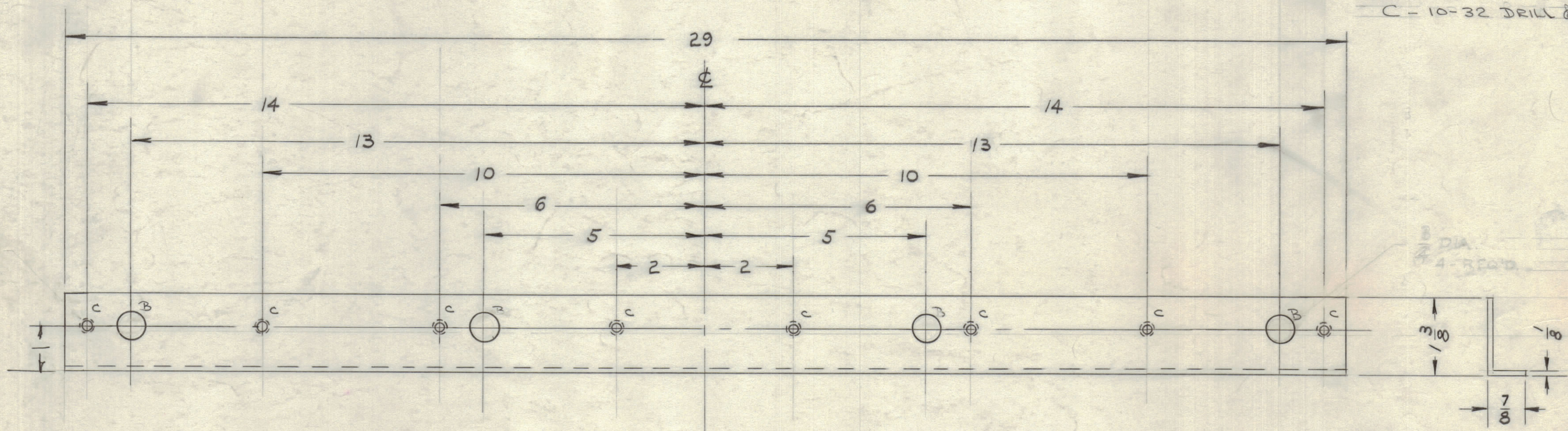
THE TECHNICAL MATERIEL CORPORATION claims proprietary right in the material disclosed hereon. This drawing is issued in confidence for engineering information only and may not be reproduced or used to manufacture anything shown hereon without permission from THE TECHNICAL MATERIEL CORPORATION to the user. This drawing is loaned for mutual assistance and is subject to recall at any time.

Property of:  
**THE TECHNICAL MATERIEL CORPORATION**  
 MAMARONECK, NEW YORK

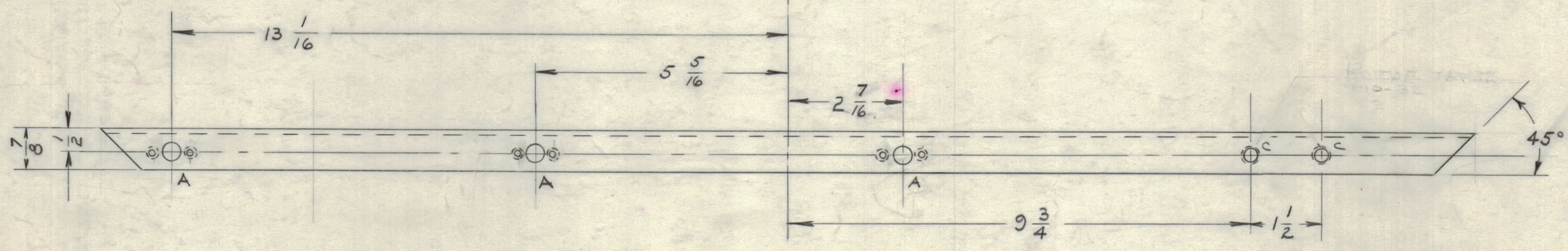


- A - 3 REQ
- B - 5/8 D - 4 REQ
- C - 10-32 DRILL & TAP 10 REQ

10-32 TAP  
 6-REQ



MS-1363 C



ISSUE	ITEM	CHANGED FROM	DATE	CN. NO.	DRAFTS	CHECKER	ENG. APP.
C	1	"A" DRILLING WAS OUTSIDE LIP	10/59	656	ave	JCB	[Signature]
B	1	1 3/8 DIM WAS 1 3/4	12 2 58	#	JCB	JCB	[Signature]
A	1	B + C HOLES DIM. ADDED	11/85	#	JCB	JCB	[Signature]

TOLERANCES		SCALE:
ALL OTHERS	DEC. DIM. ± FRAC. DIM. ± 1/64 ANGULAR DIM. ±	DRILL, PUNCH, COMMERCIAL STOCK SIZES AND MANUFACTURERS TOLERANCES ARE NOT INCLUDED.

UNLESS OTHERWISE SPECIFIED DIMENSIONS ARE IN INCHES AND INCLUDE CHEMICALLY APPLIED OR PLATED FINISHES

DECIMALS: .X ± .05, .XX ± .01, .XXX ± .005

FRACTIONS: ± 1/64 ANGLES ± 0° 30'

TOLERANCES

CUT HERE GUARANTEED DIM.

1	RTP-2	PROJECT NO.	ASS'Y. NO.	10-6-58	DATE
REQ PER UNIT	MODEL	PROJECT NO.	ASS'Y. NO.	DATE	USED ON

REQ. ITEM	PART NO.	DESCRIPTION	SYMBOL
1	1 3/8 x 7/8 x 1/8 STOCK SIZE	THE TECHNICAL MATERIEL CORP. MAMARONECK, NEW YORK	
	STEEL	STIFFENER, FRONT PANEL	
	HOT ROLLED	RTP-2	
	TYPE & TEMPER	TOPULL	RFB
	HEAT TREAT. SPEC.	DRAWN 10-16-58	ELEC. DES. APP. MECH. DES. APP.
	S-371 DEGREASE	CHECKED	FINAL APPROVAL
	S-105 CAD. PLATE FINISH & SPEC. NO.		MS-1363 C