

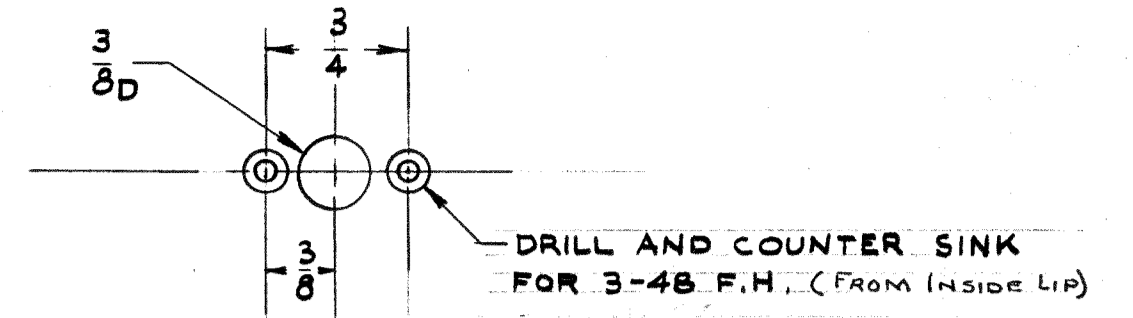
IF IT IS FOUND DESIRABLE TO CHANGE ANY TOLERANCE OR OTHER DETAIL SPECIFIED ON THIS DRAWING NOTIFY THE PURCHASER PROMPTLY.

MAXIMUM ALLOWABLE TOLERANCES HAVE BEEN DETERMINED AND DEVIATIONS WILL BE CAUSE FOR REJECTION. REMOVE ALL BURRS AND SHARP EDGES

NOTICE TO PERSONS RECEIVING THIS DRAWING

THE TECHNICAL MATERIEL CORPORATION claims proprietary right in the material disclosed hereon. This drawing is issued in confidence for engineering information only and may not be reproduced or used to manufacture anything shown hereon without permission from THE TECHNICAL MATERIEL CORPORATION to the user. This drawing is loaned for mutual assistance and is subject to recall at any time.

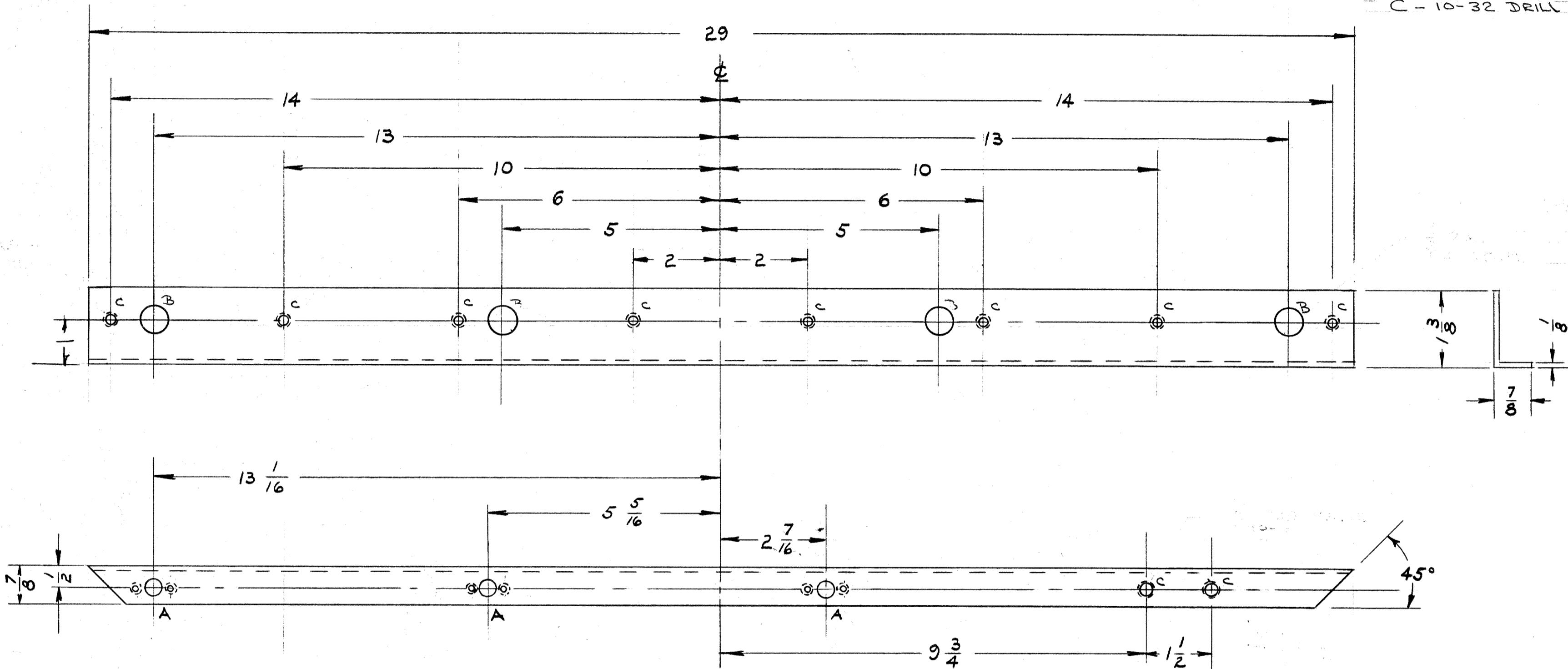
Property of:
THE TECHNICAL MATERIEL CORPORATION
MAMARONECK, NEW YORK



A - 3 REQ

B - 5/8 D - 4 REQ

C - 10-32 DRILL & TAP 10 REQ



MS-1363 C

ISSUE	ITEM	CHANGED FROM	DATE	CN. NO.	DRAFTS	CHECKER	ENG. APP.
C	1	"A" DRILLING WAS OUTSIDE LIP	11/15/58	656	ave	JCB	[Signature]
B	1	1 3/8 DIM WAS 1 3/4	12-2-58	-	J.C.B.	[Signature]	[Signature]
A	1	B + c Holes Dim. Added	11/18/58	-	[Signature]	[Signature]	[Signature]

TOLERANCES		SCALE:
ALL OTHERS	DEC. DIM. ± FRAC. DIM. ± 1/64 ANGULAR DIM. ±	DRILL, PUNCH, COMMERCIAL STOCK SIZES AND MANUFACTURERS TOLERANCES ARE NOT INCLUDED.

UNLESS OTHERWISE SPECIFIED DIMENSIONS ARE IN INCHES AND INCLUDE CHEMICALLY APPLIED OR PLATED FINISHES

DECIMALS	FRACTIONS
.X ± .05	± 1/64
.XX ± .01	ANGLES ± 0° 30'
.XXX ± .005	

CUT WARE GUARANTEED 2-45

1	RTP-2	PROJECT NO.	ASS'Y. NO.	DATE
REQ. PER UNIT	MODEL			10-6-58
USED ON				

REF: MS-1351; MS-1364	
REQ. ITEM	PART NO.
1 3/8 x 7/8 x 1/2	
STOCK SIZE	
STEEL	STIFFENER, FRONT PANEL
MATERIAL	WEIGHT PER PC.
HOT ROLLED	RTP-2
TYPE & TEMPER	10-16-58
HEAT TREAT. SPEC.	FINAL APPROVAL
S-971 DEGREASE	[Signature]
S-105 CAD. PLATE	MS-1363 E
FINISH & SPEC. NO.	

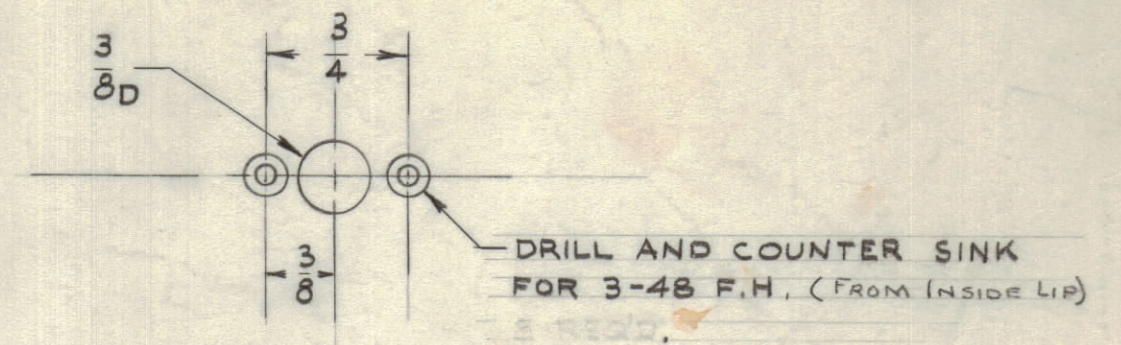
IF IT IS FOUND DESIRABLE TO CHANGE ANY TOLERANCE OR OTHER DETAIL SPECIFIED ON THIS DRAWING NOTIFY THE PURCHASER PROMPTLY.

MAXIMUM ALLOWABLE TOLERANCES HAVE BEEN DETERMINED AND DEVIATIONS WILL BE CAUSE FOR REJECTION. REMOVE ALL BURRS AND SHARP EDGES

NOTICE TO PERSONS RECEIVING THIS DRAWING

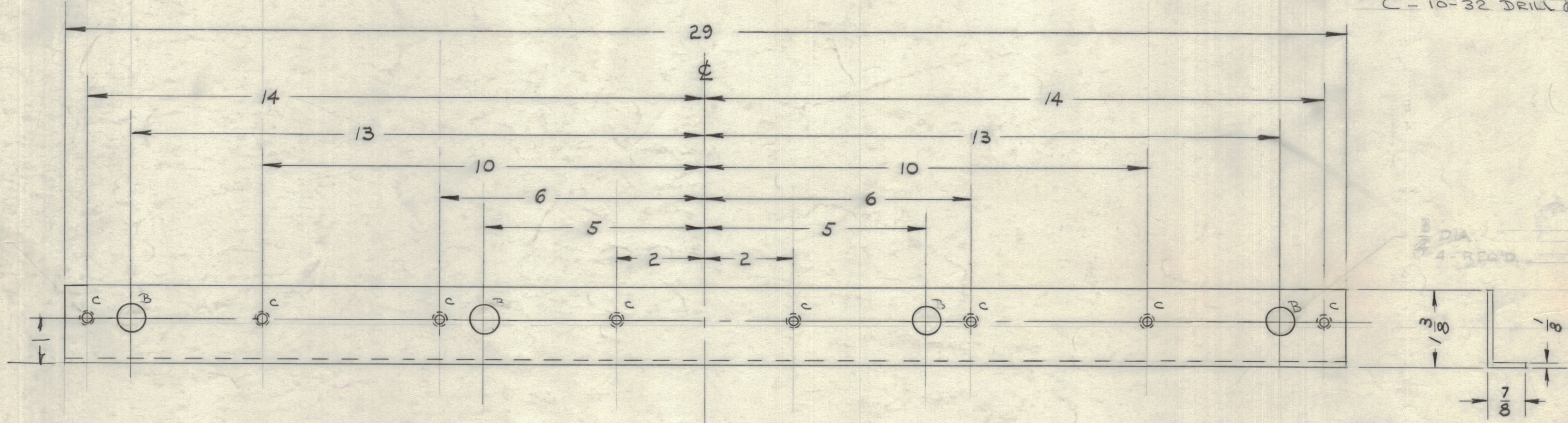
THE TECHNICAL MATERIEL CORPORATION claims proprietary right in the material disclosed hereon. This drawing is issued in confidence for engineering information only and may not be reproduced or used to manufacture anything shown hereon without permission from THE TECHNICAL MATERIEL CORPORATION to the user. This drawing is loaned for mutual assistance and is subject to recall at any time.

Property of:
THE TECHNICAL MATERIEL CORPORATION
 MAMARONECK, NEW YORK

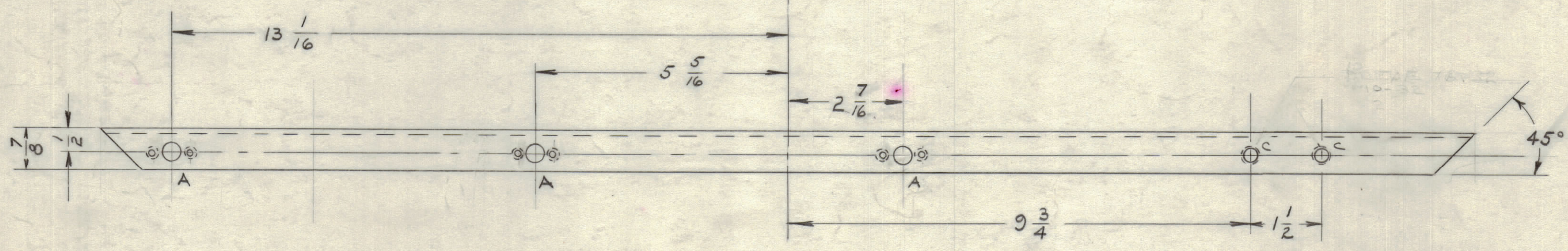


- A - 3 REQ
- B - 5/8 D - 4 REQ
- C - 10-32 DRILL & TAP 10 REQ

10-32 TAP
 6-REQ



MS-1363 C



ISSUE	ITEM	CHANGED FROM	DATE	CN. NO.	DRAFTS	CHECKER	ENG. APP.
C	1	"A" DRILLING WAS OUTSIDE LIP	10/59	656	ave	JCB	[Signature]
B	1	1 3/8 DIM WAS 1 3/4	12 2 58	#	JCB	JCB	[Signature]
A	1	B + C HOLES DIM. ADDED	11/85	#	JCB	JCB	[Signature]

TOLERANCES		SCALE: <i>cr</i>
ALL OTHERS	DEC. DIM. ± FRAC. DIM. ± 1/64 ANGULAR DIM. ±	DRILL, PUNCH, COMMERCIAL STOCK SIZES AND MANUFACTURERS TOLERANCES ARE NOT INCLUDED.

UNLESS OTHERWISE SPECIFIED DIMENSIONS ARE IN INCHES AND INCLUDE CHEMICALLY APPLIED OR PLATED FINISHES

DECIMALS: .X ± .05, .XX ± .01, .XXX ± .005

FRACTIONS: ± 1/64 ANGLES ± 0° 30'

TOLERANCES

CUT HERE GUARANTEED DIM.

1	RTP-2	PROJECT NO.	ASS'Y. NO.	10-6-58	DATE
REQ PER UNIT	MODEL	PROJECT NO.	ASS'Y. NO.	DATE	

REF: MS-1351; MS-1363; MS-1364			
REQ. ITEM	PART NO.	DESCRIPTION	SYMBOL
1	1 3/8 x 7/8 x 1/8	STIFFENER, FRONT PANEL	
MATERIAL		WEIGHT PER PC.	
STEEL			
HOT ROLLED			
TYPE & TEMPER			
CP			
HEAT TREAT. SPEC.			
S-371 DEGREASE			
S-105 CAD. PLATE			
FINISH & SPEC. NO.			
DRAWN		ELEC. DES. APP.	MECH. DES. APP.
10-16-58			
CHECKED		FINAL APPROVAL	
		MS-1363 C	