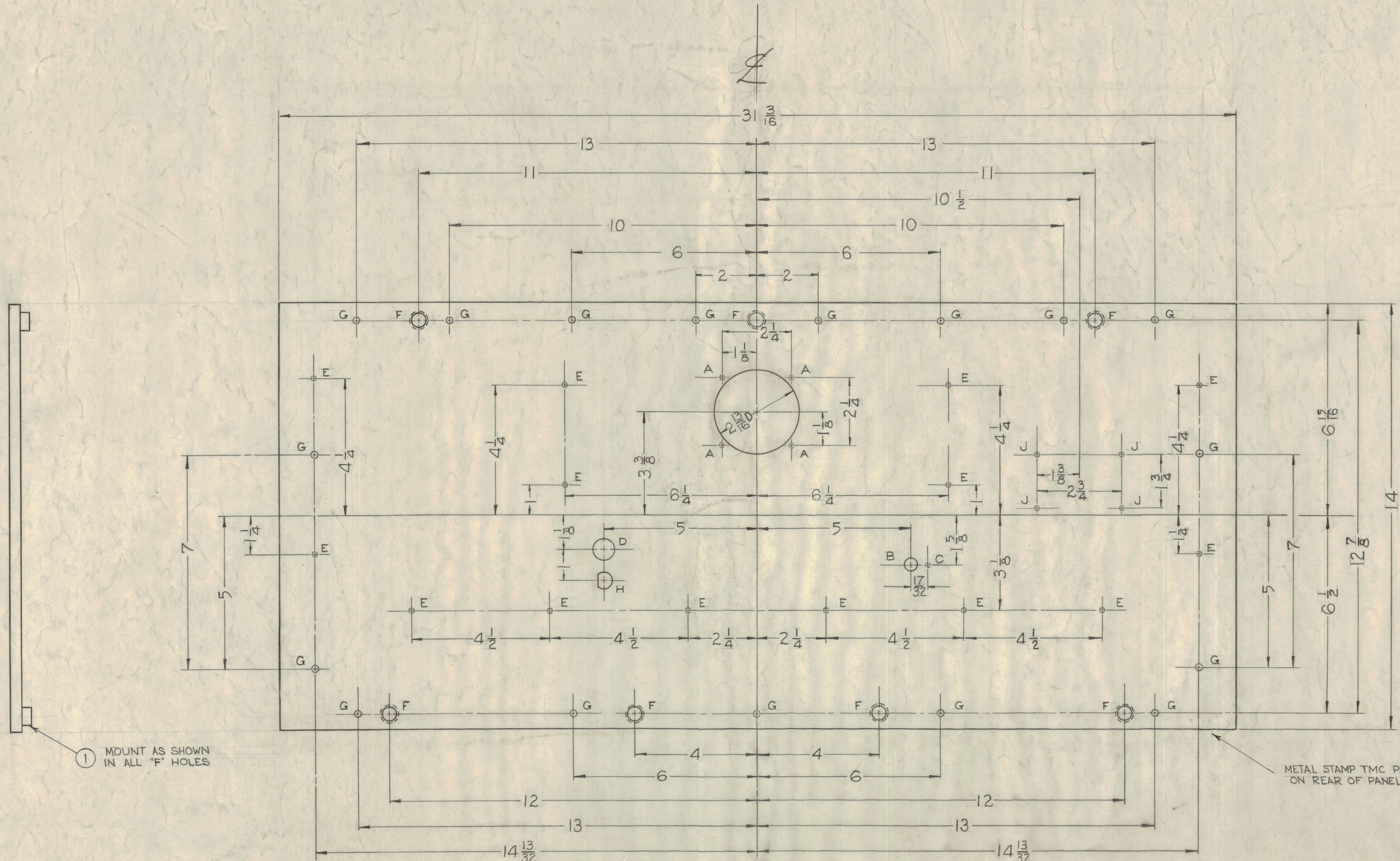


IF IT IS FOUND DESIRABLE TO CHANGE ANY TOLERANCE OR OTHER DETAIL SPECIFIED ON THIS DRAWING NOTIFY THE PURCHASER PROMPTLY.
 MAXIMUM ALLOWABLE TOLERANCES HAVE BEEN DETERMINED AND DEVIATIONS WILL BE CAUSE FOR REJECTION. REMOVE ALL BURRS AND SHARP EDGES

NOTICE TO PERSONS RECEIVING THIS DRAWING
 THE TECHNICAL MATERIEL CORPORATION claims proprietary right in the material disclosed hereon. This drawing is issued in confidence for engineering information only and may not be reproduced or used to manufacture anything shown herein without permission from THE TECHNICAL MATERIEL CORPORATION to the user. This drawing is loaned for mutual assistance and is subject to recall at any time.
 Property of:
 THE TECHNICAL MATERIEL CORPORATION
 MAMARONECK, NEW YORK



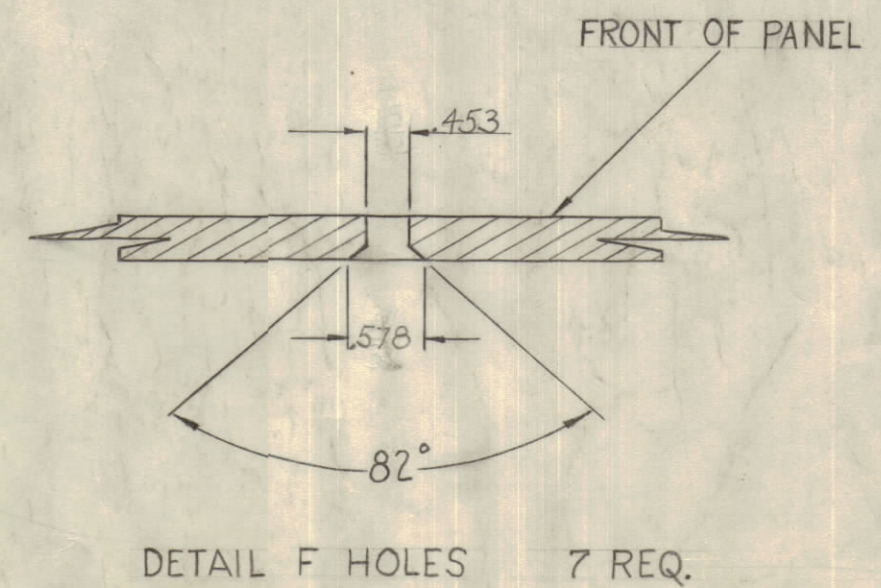
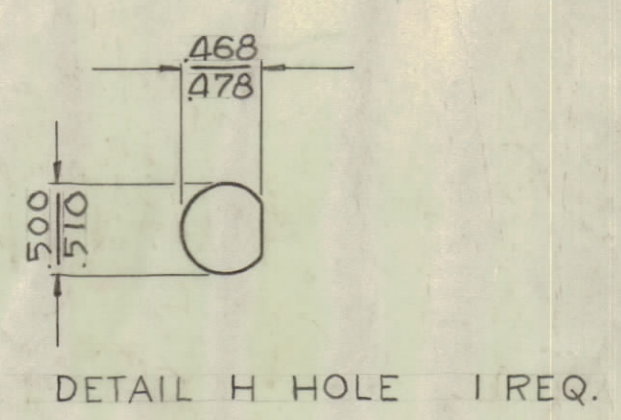
① MOUNT AS SHOWN IN ALL "F" HOLES

METAL STAMP TMC PART No. 1/8 HIGH GOTHIC ON REAR OF PANEL (MS-1361-C)

HOLE LEGEND

A	~ 5/32 (.156) DIA.	4 HOLES REQ.
B	~ 25/64 (.390) "	"
C	~ 9/64 DIA. X 1/8 DEEP FROM REAR	"
D	~ 45/64 (.703) DIA.	"
E	~ # 18 DRILL (.169) DIA.	14 " "
F	~ SEE "F" DETAIL	7 " "
G	~ 15/64 (.234) DIA.	17 " "
J	~ #47 DRILL	4 " "

FRONT VIEW OF PANEL



NOTES

- FINISH -**
 S404 YELLOW IRIDITE
 S114 ZINC CHROMATE PRIMER FRONT & EDGES
 S115 TMC SMOOTH GREY ENAMEL OR PRIME & PAINT TO CUST SPEC. ONLY
- MACHINING -**
 1. LATERAL BOW OF PANEL MUST BE KEPT TO .031 TOLERANCE.
 2. MILL ALL EDGES.
 3. HOLES MUST BE DRILLED.
 4. PANEL MUST BE FREE OF ALL MACHINING MARKS, GOUGES, AND SCRATCHES. IF NECESSARY, SAND FRONT OF PANEL WITH NO. 120 GRIT SANDPAPER.

REF: LD-452, PM-504, PM-505

7	1	NT-124	CAPTIVE INSERT	F
REQ. ITEM	PART NO.	DESCRIPTION	SYMBOL	
	3/16	ALUMINUM	FRONT PANEL	
MATERIAL		THE TECHNICAL MATERIEL CORP. MAMARONECK, NEW YORK		
STOCK SIZE		FRONT PANEL		
2024-T3		J.G. BIELE		
TYPE & TEMPER		DRAWN		
HEAT TREAT. SPEC.		ELEC. DES. APP.		
SEE NOTE		MECH. DES. APP.		
FINISH & SPEC. NO.		CHECKED		
		FINAL APPROVAL		
		MS-1361 C		

1	RTM-2	PROJECT NO.	ASSY. NO.	10-8-58	DATE
REQ PER UNIT	MODEL	PROJECT NO.	ASSY. NO.	DATE	
USED ON					

C	1	ITEM (DESIGN) ADDED	42263	8829			
B	2	3-404 WAS 5-101	1001				
B	2	453 WAS 15/32	165D	WB			
A	1	578 WAS 17/32	514	ENC			
A	1	0.41 F. DETAIL					
A	1	7/32 WAS 1/2					
ISSUE	ITEM	CHANGED FROM	DATE	CN. NO.	DRAFTS	CHECKER	ENG. APP.
TOLERANCES		SCALE:					
ALL	DEC. DIM. ±	DRILL, PUNCH, COMMERCIAL STOCK					
OTHERS	FRAC. DIM. ± 1/64	SIZES AND MANUFACTURERS					
	ANGULAR DIM. ±	TOLERANCES ARE NOT INCLUDED.					

MS-1361 C