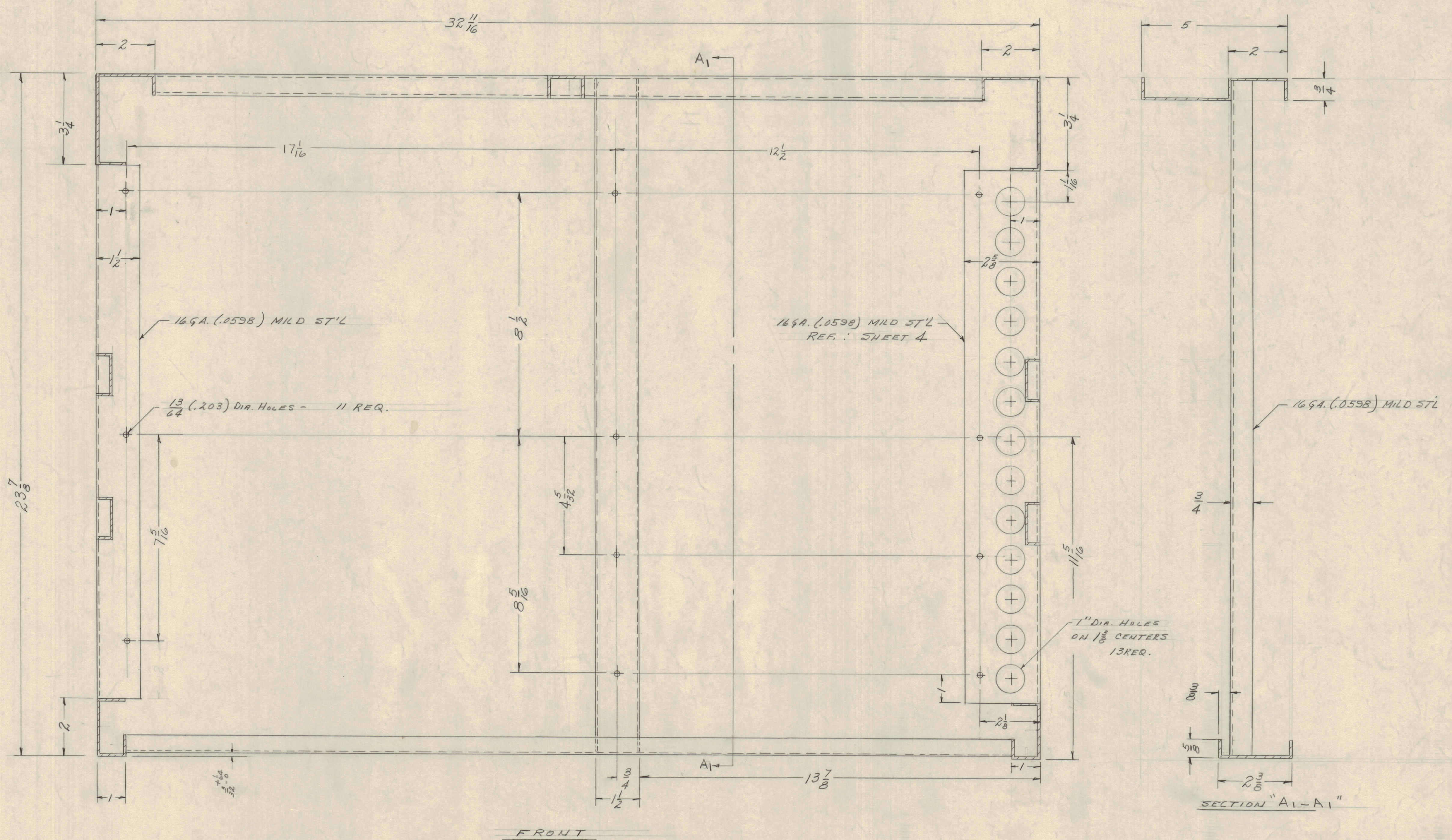


IF IT IS FOUND DESIRABLE TO CHANGE ANY TOLERANCE OR OTHER DETAIL SPECIFIED ON THIS DRAWING NOTIFY THE PURCHASER PROMPTLY.  
 MAXIMUM ALLOWABLE TOLERANCES HAVE BEEN DETERMINED AND DEVIATIONS WILL BE CAUSE FOR REJECTION.  
 REMOVE ALL BURRS AND SHARP EDGES

**NOTICE TO PERSONS RECEIVING THIS DRAWING**

THE TECHNICAL MATERIEL CORPORATION claims proprietary right in the material disclosed hereon. This drawing is issued in confidence for engineering information only and may not be reproduced or used to manufacture anything shown hereon without permission from THE TECHNICAL MATERIEL CORPORATION to the user. This drawing is loaned for mutual assistance and is subject to recall at any time.

Property of:  
 THE TECHNICAL MATERIEL CORPORATION  
 MAMARONECK, NEW YORK



NOTE: MATERIAL 12 GA (.046) MILD STEEL UNLESS NOTED OTHERWISE

K	SEE SHEET 7	62272	20740	GE	3	3	
J	SEE SHEET 1 OF 2	3-9-46	15893	WHJ	3	3	
H	SEE SHEET 11 OF 12	2-5-43	8242	REF	3	3	
G	SEE SHEET 12 OF 1	11-15-46	5807	RLU	3	3	
F	Revision Letter Clarified	1/21/61	4019	DRM	3	3	
E	DIMEN'S CLARIFIED	5/26/58	1044	RLU	3	3	
B	5/82 WAS 1/8	12/6/58	556	DRM	3	3	
A	REDIMENSIONED	11/20/58		DRM	3	3	
ISSUE	ITEM	CHANGED FROM	DATE	GN. NO.	DRAFTS	CHECKER	ENG. APP.
TOLERANCES		SCALE: 6"=1'-0"					
ALL	DEC. DIM. ±	DRILL, PUNCH, COMMERCIAL STOCK					
OTHERS	FRAC. DIM. ±	SIZES AND MANUFACTURERS					
	ANGULAR DIM. ±	TOLERANCES ARE NOT INCLUDED.					

1	CAB-7			10-13-53
REQ. PER UNIT	MODEL	PROJECT NO.	ASSY. NO.	DATE
USED ON				

REQ. ITEM	PART NO.	DESCRIPTION	SYMBOL
SEE 5-396		THE TECHNICAL MATERIEL CORP. MAMARONECK, NEW YORK	
STOCK SIZE		CABINET	
MATERIAL	WEIGHT PER PC.	CROSS SECTION A-A	
TYPE & TEMPER	10-13-53	REF	
HEAT TREAT. SPEC.	CHECKED	FINAL APPROVAL	
FINISH & SPEC. NO.	SHEET 9 OF 12	MS-1360	K

MS-1360 K