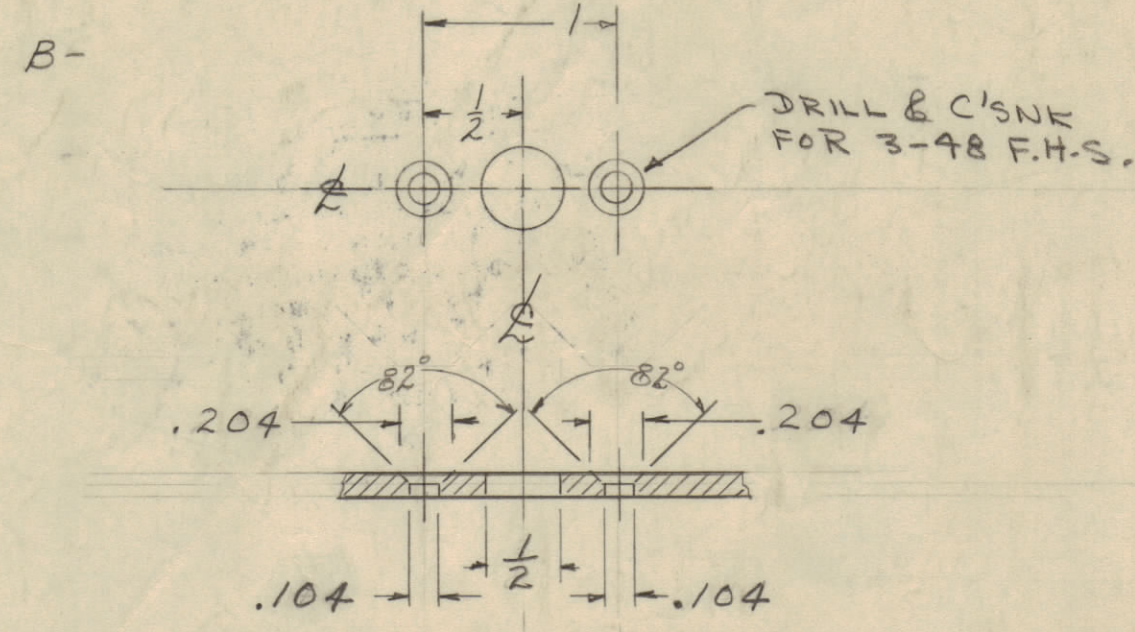


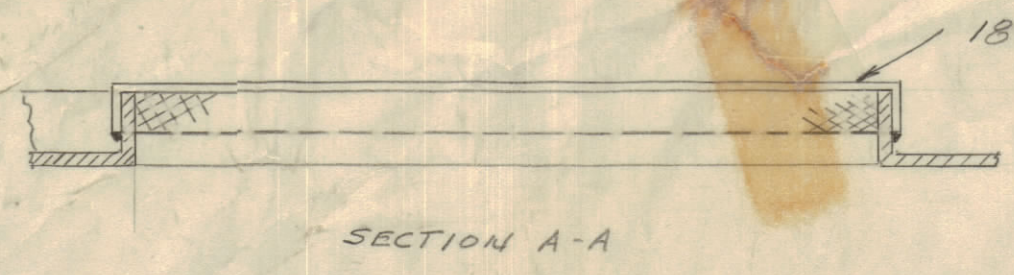
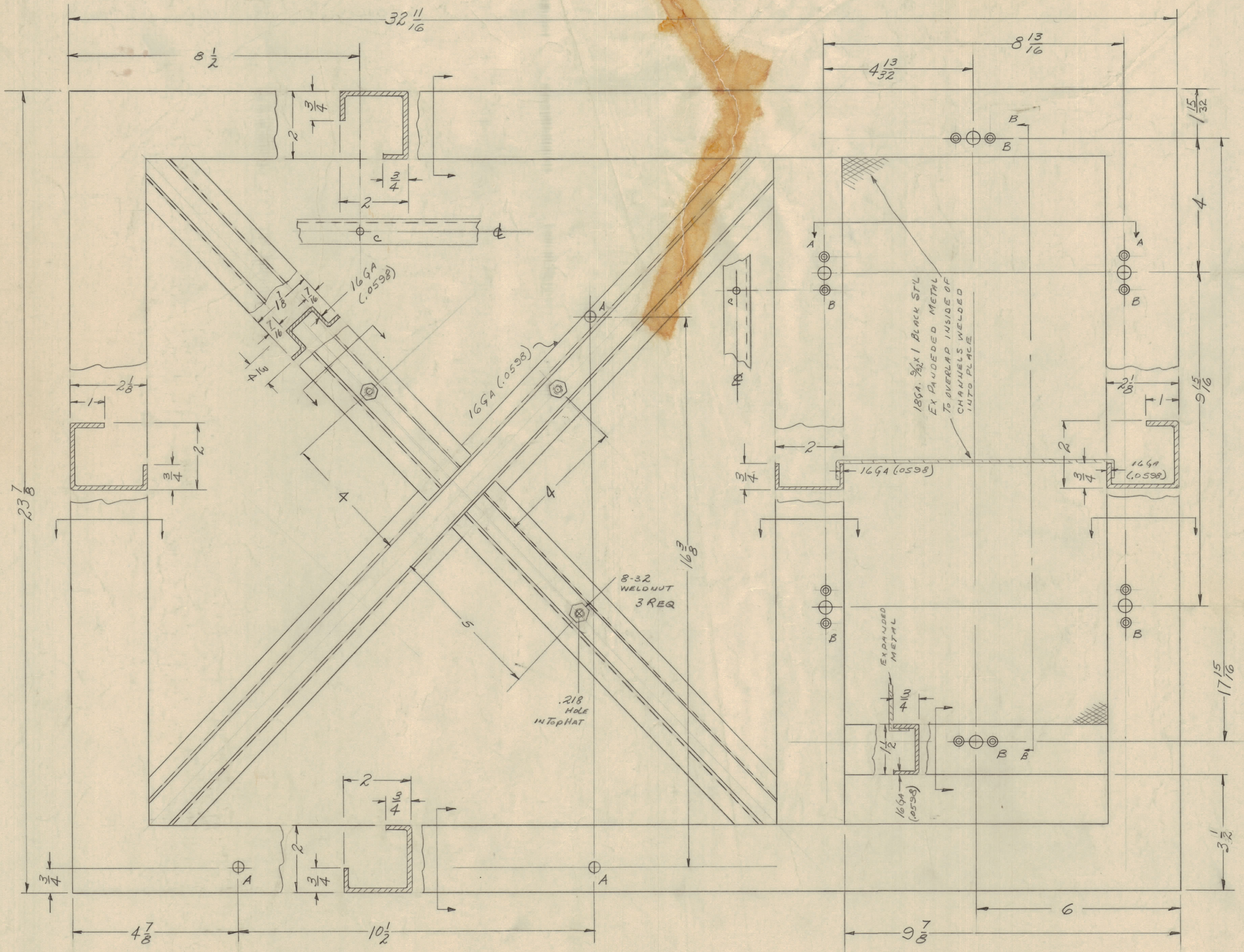
IF IT IS FOUND DESIRABLE TO CHANGE ANY TOLERANCE OR OTHER DETAIL SPECIFIED ON THIS DRAWING NOTIFY THE PURCHASER PROMPTLY.
 MAXIMUM ALLOWABLE TOLERANCES HAVE BEEN DETERMINED AND DEVIATIONS WILL BE CAUSE FOR REJECTION. REMOVE ALL BURRS AND SHARP EDGES

A - $\frac{5}{16}$ (.312) DIA HOLES - 3 REQ.



DRILLING DETAIL FOR AIR FILTER MTS
6 REQ.

C - $\frac{3}{16}$ (.187) DIA. HOLE - 2 REQ.



SECTION A-A



SECTION B-B

NOTICE TO PERSONS RECEIVING THIS DRAWING
 THE TECHNICAL MATERIEL CORPORATION claims proprietary right in the material disclosed herein. This drawing is issued in confidence for engineering information only and may not be reproduced or used to manufacture anything shown hereon without permission from THE TECHNICAL MATERIEL CORPORATION to the user. This drawing is loaned for mutual assistance and is subject to recall at any time.
 Property of:
 THE TECHNICAL MATERIEL CORPORATION
 MAMARONECK, NEW YORK

NOTE:
 ALL MEMBERS 12 GA (.105) UNLESS NOTED OTHERWISE

ISSUE	ITEM	CHANGED FROM	DATE	CN. NO.	DRAFTS	CHECKER	ENG. APP.
K	DELETED 2	ON 11.3	11/27/52	20740	GE	ED	ED
J	14	SEE SHEET 1 OF 12	3-9-54	15893	WHD	ED	ED
H	1	SEE SHEET 11 OF 12	2-15-53	8242	EL	ED	ED
G	1	SEE SHEET 12 OF 12	11-16-54	5807	EL	ED	ED
F	1	Rev letter Clarified, Item 1 & 2	12/1/51	4019	DFM	ED	ED
E	1	ADDED 2 8-32 WELD NUTS	1/29/53	724	ANC	ED	ED
E	2	ADDED 2 C HOLES	1/29/53	724	ANC	ED	ED
D	1	8" DETAIL WAS 6-32	1/24/53	616	ANC	ED	ED
C	1	ADDED WELD NUTS .218 HOLE	12/4/52	559	ANC	ED	ED
B	1	ADDED DETAIL FOR EXPANDED METAL	11/6/52	-	ANC	ED	ED
A	1	ADDED 3 A HOLES	11/6/52	-	ANC	ED	ED

REQ. ITEM	PART NO.	DESCRIPTION	SYMBOL
12	6	NTH0348BNG	NUT, HEX
12	5	LWS03MRN	LOCKWASHER, SPLIT
6	4	FS-102-4	SPRING, "S" TYPE
24	3	FW03HBN	WASHER, FLAT, .031 THK.
2		DELETED	
12	1	SCFS0348BNG	SCREW, MACHINE, FH, 3-48 x 3/8 Lg.

REG. ITEM	PART NO.	DESCRIPTION	SYMBOL
SEE 3-396			
STOCK SIZE			
CABINET			
TOP VIEW			
MATERIAL WEIGHT PER PC			
TYPE & TEMPER			
DRAWN			
ELEC. DES. APP.			
MECH. DES. APP.			
HEAT TREAT SPEC.			
CHECKED			
FINAL APPROVAL			
SEE 3-396			
FINISH & SPEC. NO.			

REQ. PER UNIT	MODEL	PROJECT NO.	ASSY. NO.	DATE
1	CAB-7			10-8-58
USED ON				

MS-1360