

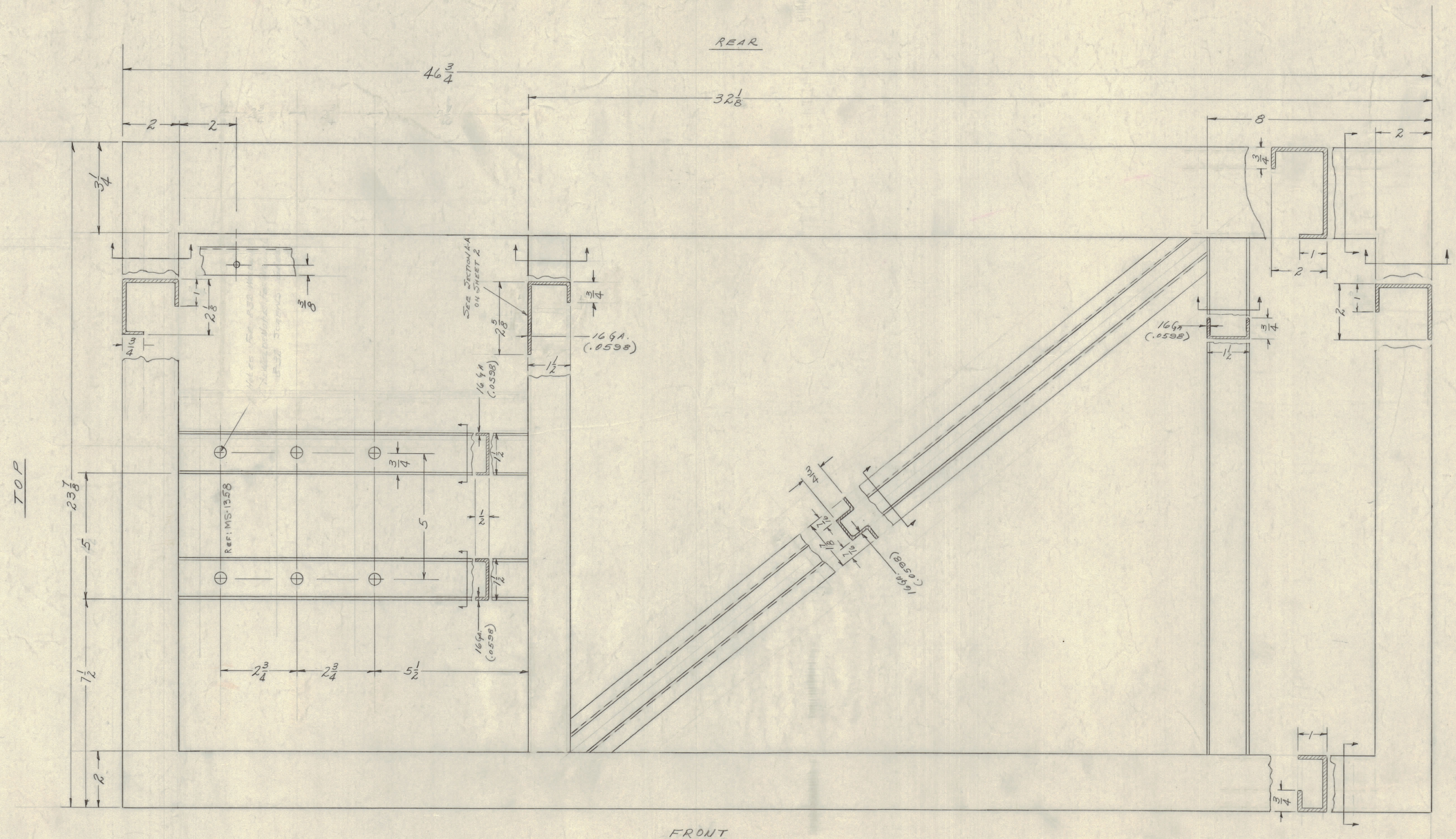
IF IT IS FOUND DESIRABLE TO CHANGE ANY TOLERANCE OR OTHER DETAIL SPECIFIED ON THIS DRAWING NOTIFY THE PURCHASER PROMPTLY.  
 MAXIMUM ALLOWABLE TOLERANCES HAVE BEEN DETERMINED AND DEVIATIONS WILL BE CAUSE FOR REJECTION. REMOVE ALL BURRS AND SHARP EDGES.

**NOTICE TO PERSONS RECEIVING THIS DRAWING**

THE TECHNICAL MATERIEL CORPORATION claims proprietary right in the material disclosed hereon. This drawing is issued in confidence for engineering information only and may not be reproduced or used to manufacture anything shown hereon without permission from THE TECHNICAL MATERIEL CORPORATION to the user. This drawing is loaned for mutual assistance and is subject to recall at any time.

Property of:  
 THE TECHNICAL MATERIEL CORPORATION  
 MAMARONECK, NEW YORK

A -  $\frac{3}{16}$  (.187) DIA. HOLE 1 Req.



**NOTE:**  
 ALL MEMBERS 12 GA. (.105) UNLESS NOTED OTHERWISE.

K	SEE SHIT 7	6-22-53	20740	GE		
J	SEE SHEET 1 OF 12	3-9-56	15593	WHD		
H	SEE SHEET 11 OF 12	2-15-53	2248			
G	SEE SHEETS 12 & 1	11-16-51	5807	RU		
F	REVISION Letter Clarified	1/2/61	4019	DXM		
E	Added A Hole	1/2/53	724	AW		
A	DIM. CHANGE: $32\frac{1}{8}$ TO $32\frac{1}{16}$	11-1-53		AW		

ISSUE ITEM CHANGED FROM DATE CN. NO. DRAFTS CHECKER ENG. APP.

TOLERANCES SCALE: 6"=1'0"

ALL DEC. DIM.  $\pm$  DRILL PUNCH, COMMERCIAL STOCK  
 OTHER FRAC. DIM.  $\pm$  3 SEE SIZES AND MANUFACTURERS  
 ANGULAR DIM.  $\pm$  5-396 TOLERANCES ARE NOT INCLUDED.

REQ. ITEM	PART NO.	DESCRIPTION	SYMBOL
1	CAB-7	RIGHT SIDE VIEW	
SEE S-396		THE TECHNICAL MATERIEL CORP.	
STOCK SIZE		MAMARONECK, NEW YORK	
MATERIAL		CABINET	
WEIGHT PER PC.		RIGHT SIDE VIEW	
TYPE & TEMPER		11-8-53	
HEAT TREAT. SPEC.		DRAWN	ELEC. DES. APP.
FINISH & SPEC. NO.		CHECKED	MECH. DES. APP.

10-13-53  
 SEE S-396  
 SHEET 4 OF 12  
 MS-1360 K

MS-1360 K