

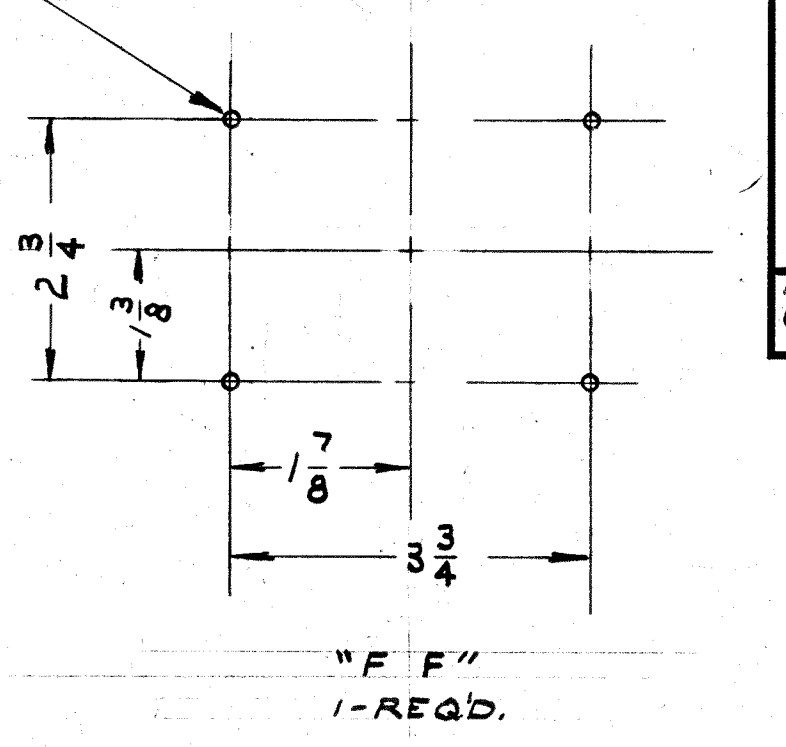
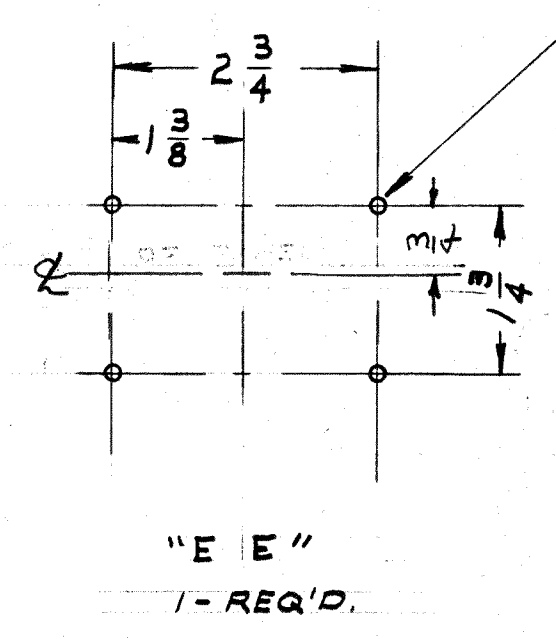
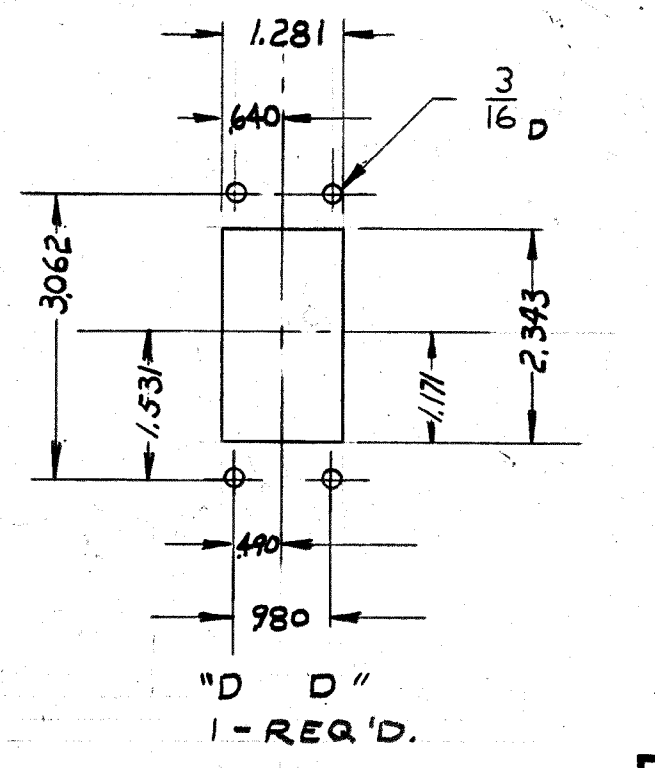
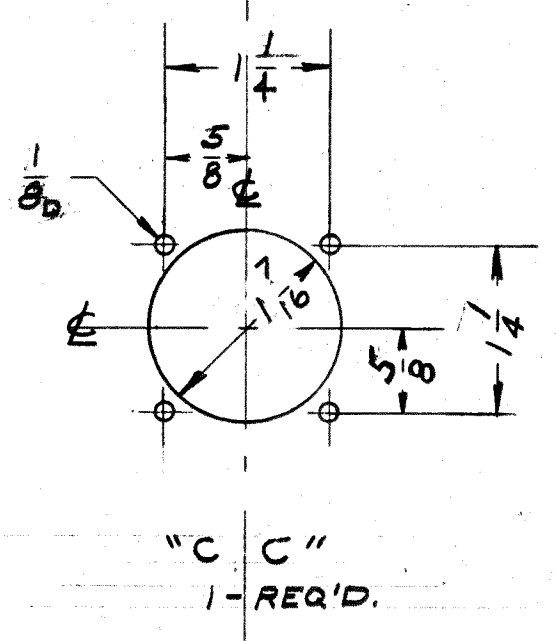
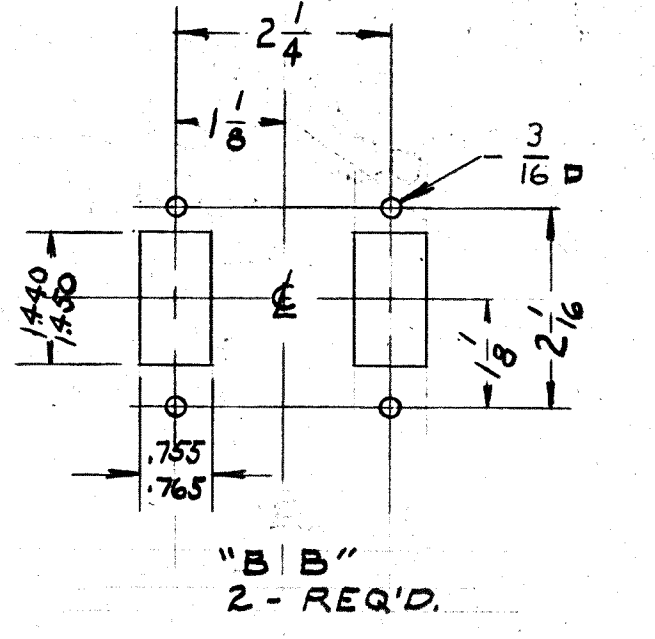
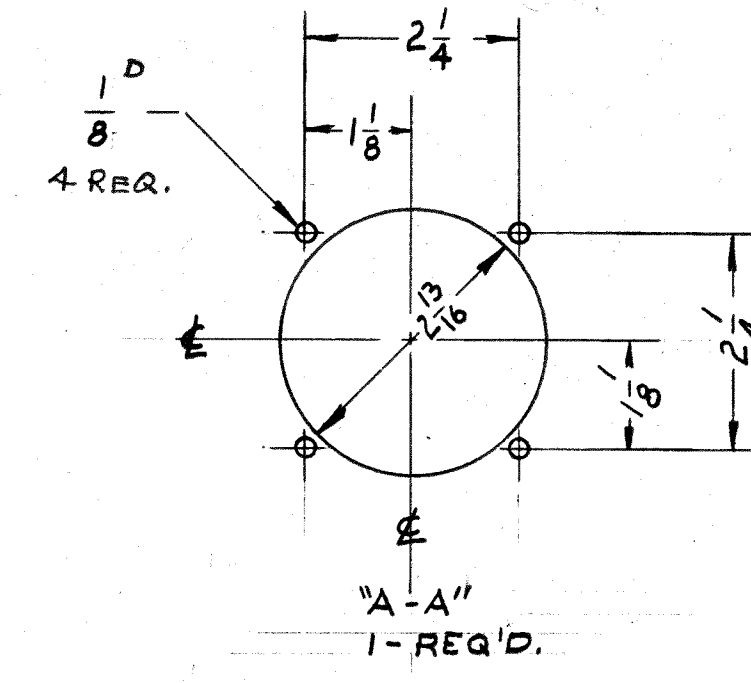
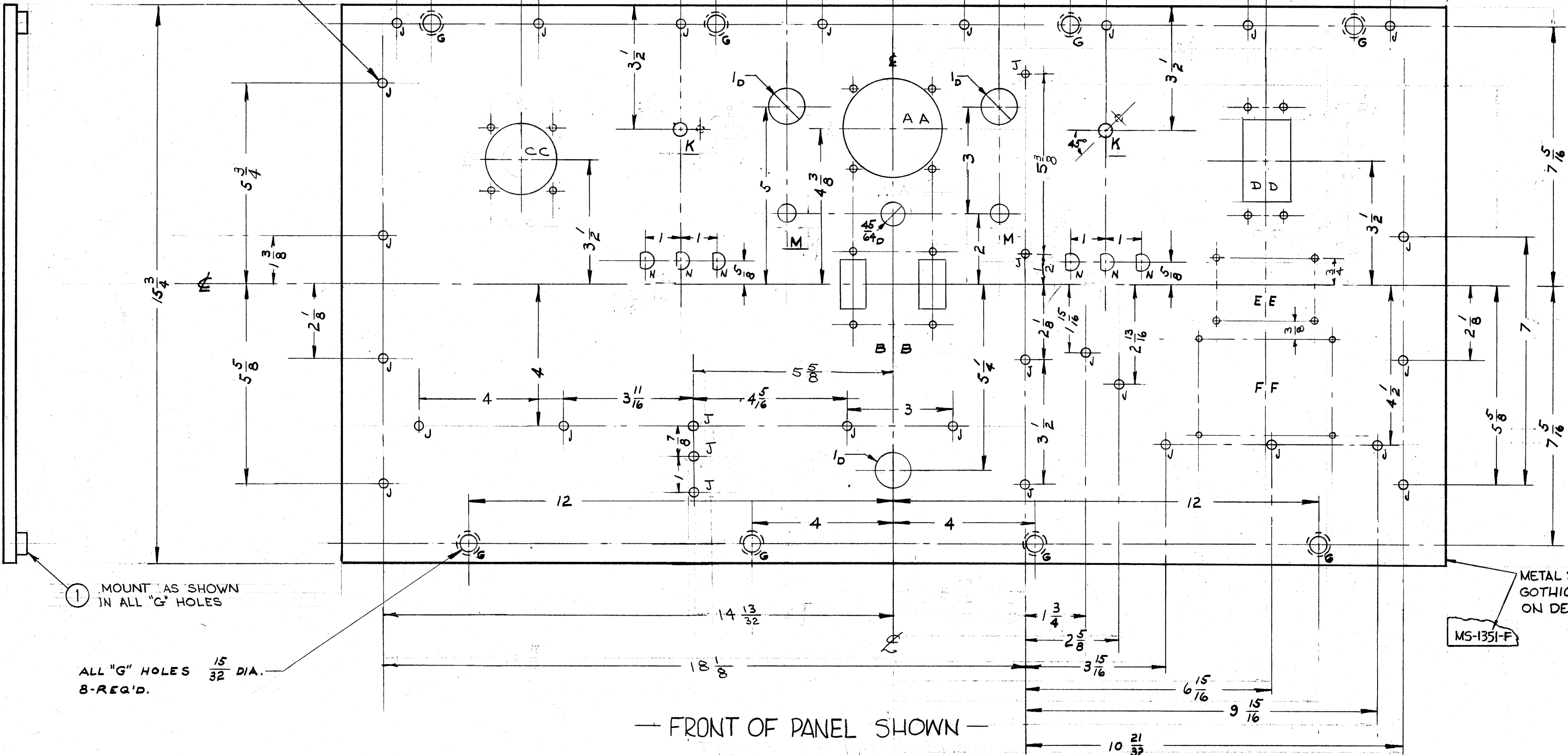
IF IT IS FOUND DESIRABLE TO CHANGE ANY TOLERANCE OR OTHER DETAIL SPECIFIED ON THIS DRAWING NOTIFY THE PURCHASER PROMPTLY.
 MAXIMUM ALLOWABLE TOLERANCES HAVE BEEN DETERMINED AND DEVIATIONS WILL BE CAUSE FOR REJECTION.
 REMOVE ALL BURRS AND SHARP EDGES

NOTICE TO PERSONS RECEIVING THIS DRAWING

THE TECHNICAL MATERIEL CORPORATION claims proprietary right in the material disclosed hereon. This drawing is issued in confidence for engineering information only and may not be reproduced or used to manufacture anything shown hereon without permission from THE TECHNICAL MATERIEL CORPORATION to the user. This drawing is loaned for mutual assistance and is subject to recall at any time.

Property of:
 THE TECHNICAL MATERIEL CORPORATION
 MAMARONECK, NEW YORK

ALL "J" HOLES 15/64 DIA. 234 REQ'D.



1 MOUNT AS SHOWN IN ALL "G" HOLES

ALL "G" HOLES 15/32 DIA. 8-REQ'D.

METAL STAMP TMC PART NO. 1/8 HIGH GOTHIC ON REAR OF PANEL AS SHOWN ON DETAIL
 MS-1351-F

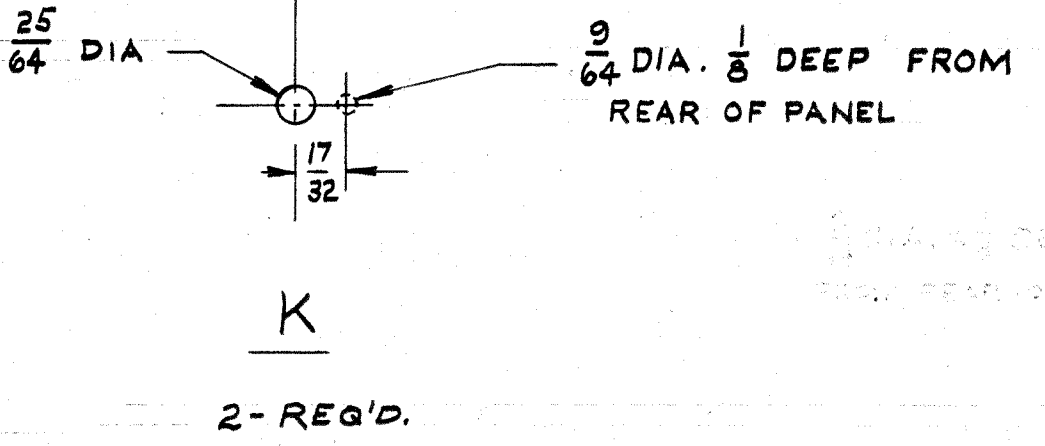
NOTES

- FINISH -**
 S404 YELLOW IRIDITE
 S114 ZINC CHROMATE PRIMER
 S115 TMC SMOOTH GREY ENAMEL FRONT
 OR PRIME & PAINT TO CUST. SPEC. EDGE ONLY

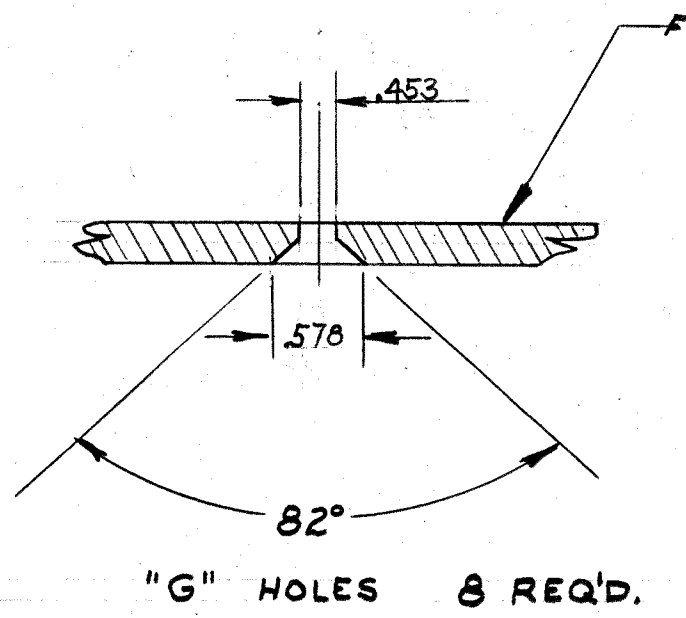
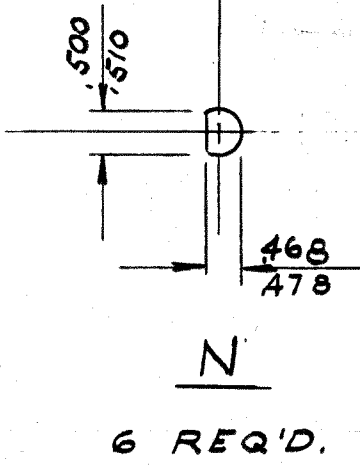
- MACHINING -**
 1- LATERAL BOW OF PANEL MUST BE KEPT TO .031 TOLERANCE
 2- MILL ALL EDGES
 3- HOLES MUST BE DRILLED
 4- PANEL MUST BE FREE OF ALL MACHINING MARKS, GOUGES, AND SCRATCHES IF NECESSARY SAND FRONT OF PANEL WITH NO. 120 GRIT SANDPAPER

REF: LD451 (S) ENGRAVING & MS-1363

3	DELE REF LD 162	11/70	DRG	GE			
1	ITEM (1) ASIDE VIEW ADDED	4/22/53	5823	IS	JK		
1	1/16 DIA HOLES WERE 11/64 DIA ON "B-B" & "D-D" DETAILS	11-3-61	5800	IS	JK		
1	S-404 YEL IRIDITE WAS S-101 CAUSTIC DIP	4/9	1001	AB	JK		
1	453 WAS 152	1/59	1650	AB	JK		
1	574 WAS 574	1/158	623	AK	JK		
1	578 WAS 5	1/158	552	AK	JK		
1	ADDED "J" HOLE	1/158	552	AK	JK		
1	C-C DETAIL CHANGED	1/21/58		PEZ	JK		
ISSUE	ITEM	CHANGED FROM	DATE	CH. NO.	DRAFTS	CHECKER	ENG. APP.
TOLERANCES				SCALE: #			
ALL	DEC. DIM. ± .053	DRILL, PUNCH, COMMERCIAL STOCK					
OTHER	FRACTIONAL DIM. ± √64	SIZES AND MANUFACTURERS					
	ANGULAR DIM. ± 2°	TOLERANCES ARE NOT INCLUDED.					



M - 17/32 D - 2 REQ'D



1	RTP-2	PROJECT NO.	10-7-58
REQ PER UNIT	MODEL	ASSY. NO.	DATE

B 1	NT-124	CAPTIVE INSERT	"G"
REQ. ITEM	PART NO.	DESCRIPTION	SYMBOL
3/16	MAT'L.	THE TECHNICAL MATERIEL CORP. MAMARONECK, NEW YORK	
ALUMINUM		PANEL, FRONT	
2024-T3		RTP-2	
TYPE & TEMPER		DRAWN: [Signature]	
		ELEC. DES. APP. [Signature]	
		CHECKED: [Signature]	
		FINAL APPROVAL [Signature]	
SEE FINISH NOTE		MS-1351 G	
FINISH & SPEC. NO.			

IF IT IS FOUND DESIRABLE TO CHANGE ANY TOLERANCE OR OTHER DETAIL SPECIFIED ON THIS DRAWING NOTIFY THE PURCHASER PROMPTLY.
 MAXIMUM ALLOWABLE TOLERANCES HAVE BEEN DETERMINED AND DEVIATIONS WILL BE CAUSE FOR REJECTION.
 REMOVE ALL BURRS AND SHARP EDGES

NOTICE TO PERSONS RECEIVING THIS DRAWING

THE TECHNICAL MATERIEL CORPORATION claims proprietary right in the material disclosed hereon. This drawing is issued in confidence for engineering information only and may not be reproduced or used to manufacture anything shown hereon without permission from THE TECHNICAL MATERIEL CORPORATION to the user. This drawing is loaned for mutual assistance and is subject to recall at any time.

Property of:
 THE TECHNICAL MATERIEL CORPORATION
 MAMARONECK, NEW YORK

ALL "J" HOLES $\frac{15}{64}$ DIA. 234 REQ'D.

ALL "G" HOLES $\frac{15}{32}$ DIA. 8-REQ'D.

1 MOUNT AS SHOWN IN ALL "G" HOLES

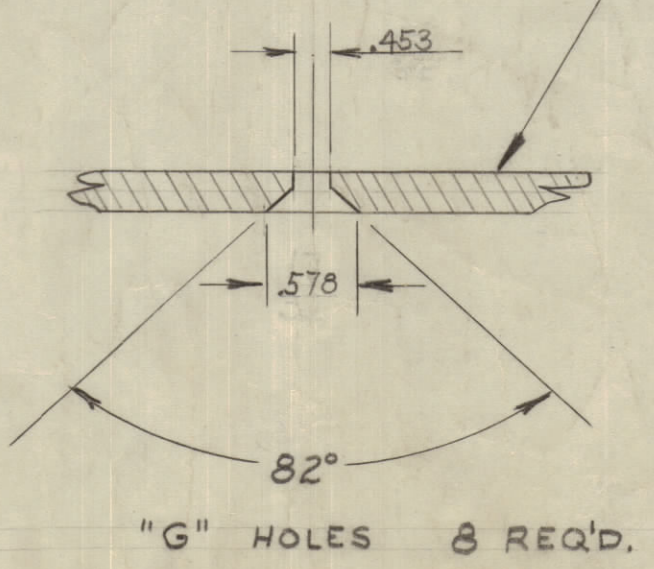
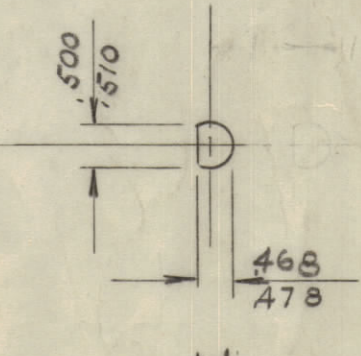
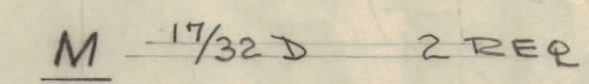
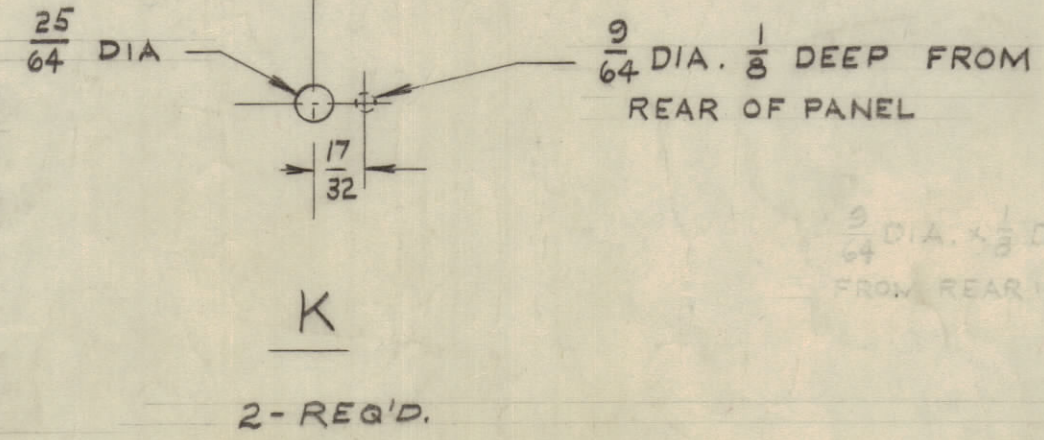
METAL STAMP TMC PART NO. 1/8 HIGH GOTHIC ON REAR OF PANEL AS SHOWN ON DETAIL

MS-1351-F

FRONT OF PANEL SHOWN

FRONT OF PANEL

G	3	DELE REF LD 462	11/70	2000	GE	OK	RE
F	1	ITEM (1) SIDE VIEW ADDED	4/22/53	5823	OK	OK	RE
E	1	3/16 DIA HOLES WERE 1/16 DIA. ON "BB" & "DD" DETAILS	11-3-61	5800	BA	OK	RK
D	1	S-404 TEL. IRIDITE WAS S-101 CAUSTIC DIP	12/19/51	1001	AB	OK	OK
C	1	.453 WAS 1/32	1/59	1650	OK	OK	OK
B	1	ADDED "J" HOLE	12/1/52	552	OK	OK	OK
A	1	C-C DETAIL CHANGED	1/22/53		PEL	OK	OK



ALL OTHERS	DEC. DIM. $\pm .003$	FRAC. DIM. $\pm 1/64$	ANGULAR DIM. ± 20
	DRILL, PUNCH, COMMERCIAL STOCK SIZES AND MANUFACTURERS TOLERANCES ARE NOT INCLUDED.		

REQ. PER UNIT	MODEL	PROJECT NO.	ASS'Y. NO.	DATE
1	RTP-2			10-7-53

NOTES

FINISH -

- S404 YELLOW IRIDITE
- S114 ZINC CHROMATE PRIMER
- S115 TMC SMOOTH GREY ENAMEL

FRONT & EDGE ONLY OR PRIME & PAINT TO CUST. SPEC.

MACHINING -

- LATERAL BOW OF PANEL MUST BE KEPT TO .031 TOLERANCE
- MILL ALL EDGES
- HOLES MUST BE DRILLED
- PANEL MUST BE FREE OF ALL MACHINING MARKS, GOUGES, AND SCRATCHES IF NECESSARY SAND FRONT OF PANEL WITH NO. 120 GRIT SANDPAPER

REF: LD 451 (B) ENGRAVING & MS-1363

B	1	NT-124	CAPTIVE INSERT	"G"
REQ. ITEM	PART NO.	DESCRIPTION	SYMBOL	
3/16	MAT'L.	THE TECHNICAL MATERIEL CORP.	MAMARONECK, NEW YORK	
ALUMINUM		PANEL FRONT		
MATERIAL	WEIGHT PER PC.	RTP-2		
2024-T3				
TYPE & TEMPER				
HEAT TREAT. SPEC.				
SEE FINISH NOTE				
FINISH & SPEC. NO.			MS-1351 G	

MS 1351 G