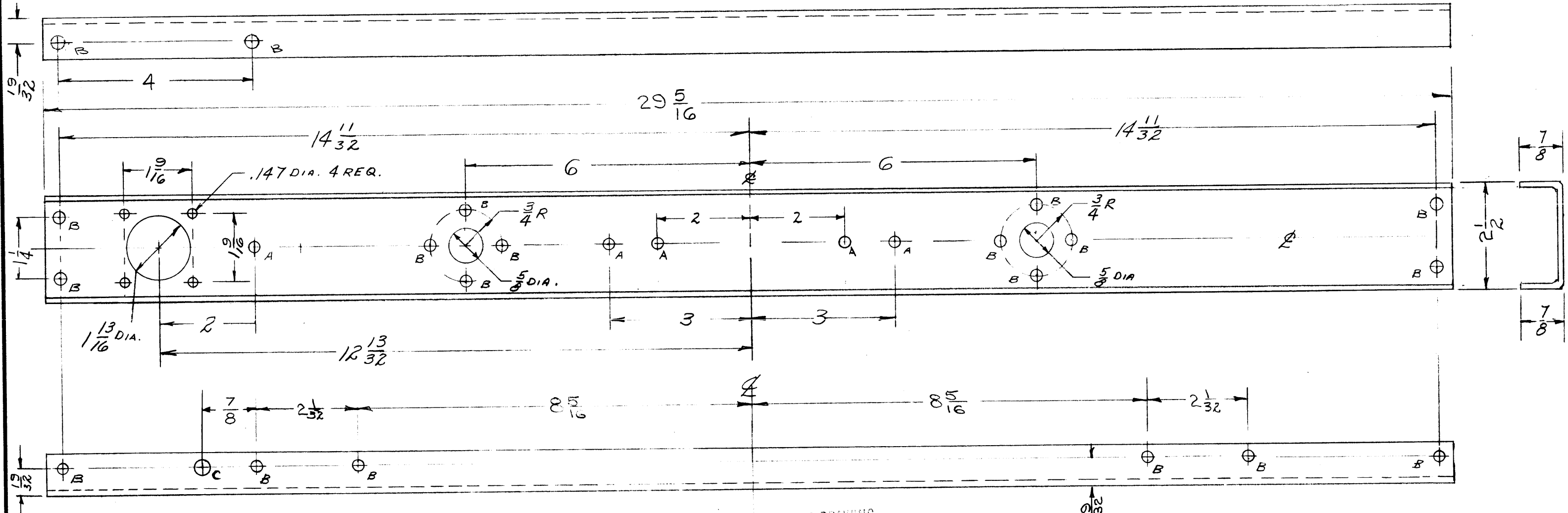


MS-1343 E

HOLE LEGEND
 A - 1/64 (.171) DIA. 5 REQ.
 B - 13/64 (.203) DIA. 20 REQ.
 C - 5/32 DIA. (.156) 1 REQ.



FORWARD TO PERSONS RECEIVING THIS DRAWING

THE TECHNICAL MATERIEL CORPORATION claims proprietary right in the material disclosed herein. This drawing is issued in confidence for engineering information only and may not be reproduced or used to manufacture anything shown herein without permission from THE TECHNICAL MATERIEL CORPORATION to the user. This drawing is loaned for mutual assistance and is subject to recall at any time.

Property of:
 THE TECHNICAL MATERIEL CORPORATION
 MAMARONECK, NEW YORK

REQ. ITEM	PART NO.	DESCRIPTION	SYMBOL
	1/8 THICK STOCK SIZE	THE TECHNICAL MATERIEL CORP. MAMARONECK, NEW YORK	
	ALUMINUM	REAR BRACE, BOTTOM	
	MATERIAL		
5052-H32	cto	9/16/58 WHL	H6 JFB
S-404 YELLOW IRIDITE		DRAWN	CHECKED
			FINAL APPROVAL
			MS-1343 E

ISSUE	ITEM	CHANGED FROM	DATE	CH. NO.	DRAFTS	CHECKER	ENG. APP.
E	1	1 (C) HOLE ADDED	2-21-62	E408	G.S.		
D	1	S-404 WAS S-101	12/15/59	1001	AB		EMN
C		ADDED 2 'A' HOLES	6-3-59	1099	RLH		
B		WIDTH WAS DIMENSIONED INSIDE BENDS	5/2/59	967			
A		2 1/32 WAS 2 1/8 ADDED 2 'B' HOLES	4-16-59				

REQ. PER UNIT	MODEL	PROJECT NO.	ASS'Y. NO.	DATE
1	RTS-2			4-16-59
1	RTX-2	E-1041		9-16-58

DEC. DIM. ±
 FRAC. DIM. ± 1/64
 ANGULAR DIM. ±

MAXIMUM ALLOWABLE TOLERANCES HAVE BEEN DETERMINED AND ANY DEVIATIONS WILL BE CAUSE FOR REJECTION.
 REMOVE ALL BURRS AND SHARP EDGES

TOLERANCES: c/a
 SCALE: c/a