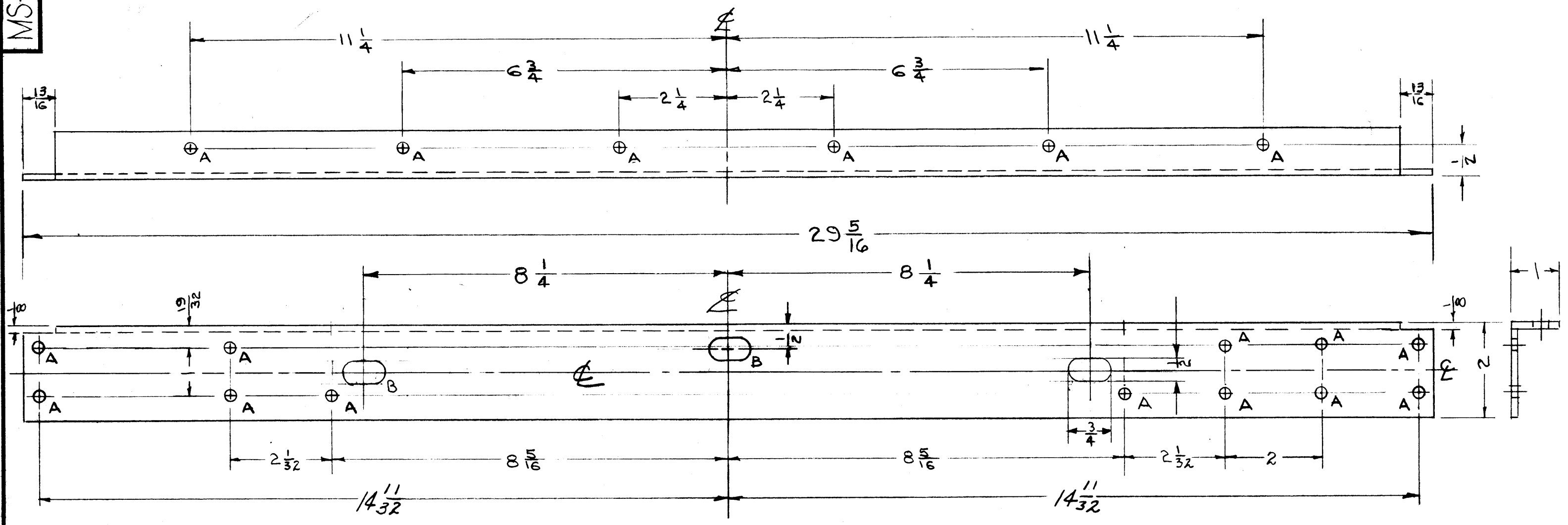


MS-1339 F

A ~ 13/64 (.203) DIA. 18 Req.
 B ~ 1/2 x 3/4 SLOT 3 Req.



NOTICE TO PERSONS RECEIVING THIS DRAWING

THE TECHNICAL MATERIEL CORPORATION claims proprietary right in the material disclosed hereon. This drawing is issued in confidence for engineering information only and may not be reproduced or used to manufacture anything shown hereon without permission from THE TECHNICAL MATERIEL CORPORATION to the user. This drawing is loaned for mutual assistance and is subject to recall at any time.

1/8 RADIi INSIDE BENDS.

Property of:
THE TECHNICAL MATERIEL CORPORATION
 MAMARONECK, NEW YORK

REF: DIE # 6844 (ALCOA)

ISSUE	ITEM	CHANGED FROM	DATE	CH. NO.	DRAFTS	CHECKER	ENG. APP.
F	3	2(A)H LES DELETED	7/26/62	6880	ef.	JCB	[Signature]
F	2	1(B) SLOT ADDED					
F	1	DIM B 7/8 WAS 7-3/16					
E	2	1/2 X 3/4 SLOT WERE 1/2(SLO) D. 1/2" HOLE	1/14/60	1757	MAF.	JCB	[Signature]
E	1	11/16 DIM. DELETED, 7/8 ADDED					
D	1	S-404 WAS S-101	12/15/59	1001	MB		EMN
C	1	2 "B" Holes added	5/12/59	974	J.C.B.	[Signature]	[Signature]
B		2 1/8 WAS 2 1/8, ADDED 1/4 HOLE (2" DIA)	4/15/59			[Signature]	[Signature]
A		DIM. CHG E 1/2 WAS 5/8	11/2/58			J.C.B.	[Signature]

TOLERANCES		SCALE:
DEC. DIM. ±		1/2
FRA. DIM. ±	1/64	
ANGULAR DIM. ±		

MAXIMUM ALLOWABLE TOLERANCES HAVE BEEN DETERMINED AND ANY DEVIATIONS WILL BE CAUSE FOR REJECTION. REMOVE ALL BURRS AND SHARP EDGES

1	RTS-2			4-16-59
1	RTX-2	E-1041		9-16-58
REQ. PER UNIT	MODEL	PROJECT NO.	ASS'Y. NO.	DATE

REQ. ITEM	PART NO.	DESCRIPTION	SYMBOL
	1/8 THICK	THE TECHNICAL MATERIEL CORP.	
	STOCK SIZE	MAMARONECK, NEW YORK	
	ALUMINUM	SUPPORT, FRONT MEMBER	
	MATERIAL		
	5052-H32	9/16/58	[Signature]
	S-404 YELLOW IRIDITE	REF	[Signature]
	FINISH & SPEC. NO.	ELEC. DES. APP.	MECH. DES. APP.

MS-1339 F