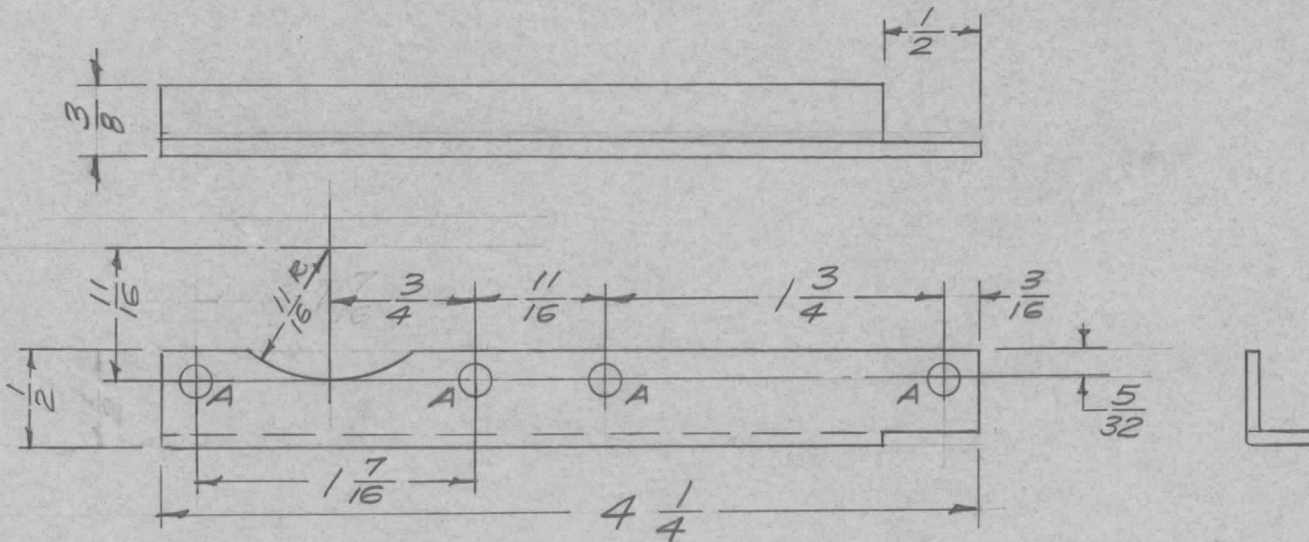


REQ. PER UNIT	USED ON		
	MODEL	ASS'Y. NO.	DATE
1	FFR-3		9/8/58
1	MSR-1,3,4		9/8/58

MS-1332 B



A - $\frac{13}{64}$ (.203) D. 4 Req.

ISSUE	ITEM	CHANGED FROM	DATE	CH. NO.	DRAFTS	CHECKER	ENG. APP.	REQ. ITEM	PART NO.	DESCRIPTION	SYMBOL				
B	1	S404-Y-IRIDITE WAS S101-CAUSTIC D/P	12-8 59	1001	P		EMN			THE TECHNICAL MATERIEL CORP. MAMARONECK, NEW YORK BRACE, POWER SUPPLY CHASSIS					
A	1	11/16 R. Added (cutout) FFR-3 Ref was FFR-2	10/27/58	507	16	JLD P.L.K. & R.		.081 THK.	STOCK SIZE						
			9/5/58	443 Pg. 1	16			ALUMINUM	MATERIAL						
								5052-H32							
TOLERANCES			SCALE: FULL					16 9/8/58	JLD						
DEC. DIM. \pm			MAXIMUM ALLOWABLE TOLERANCES HAVE BEEN DETERMINED AND ANY DEVIATIONS WILL BE CAUSE FOR REJECTION. REMOVE ALL BURRS AND SHARP EDGES					TYPE & TEMPER	HEAT TREAT. SPEC.	DRAWN	CHECKED	FINAL APPROVAL			
FRAC. DIM. \pm 1/64								5404-15L IRIDITE		P.L.K.					
ANGULAR DIM. \pm								FINISH & SPEC. NO.				ELEC. DES. APP.	MECH. DES. APP.		MS-1332 B