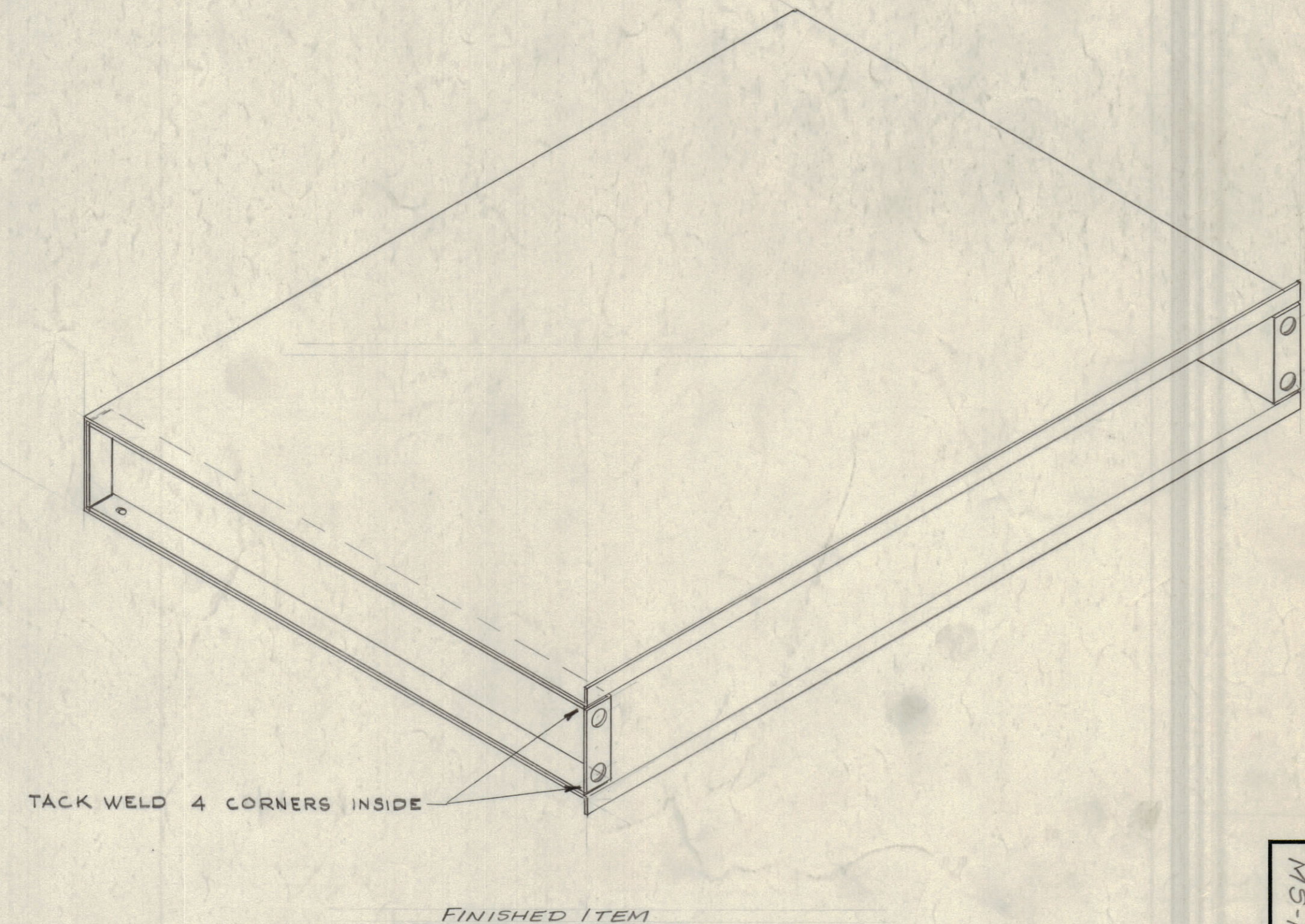
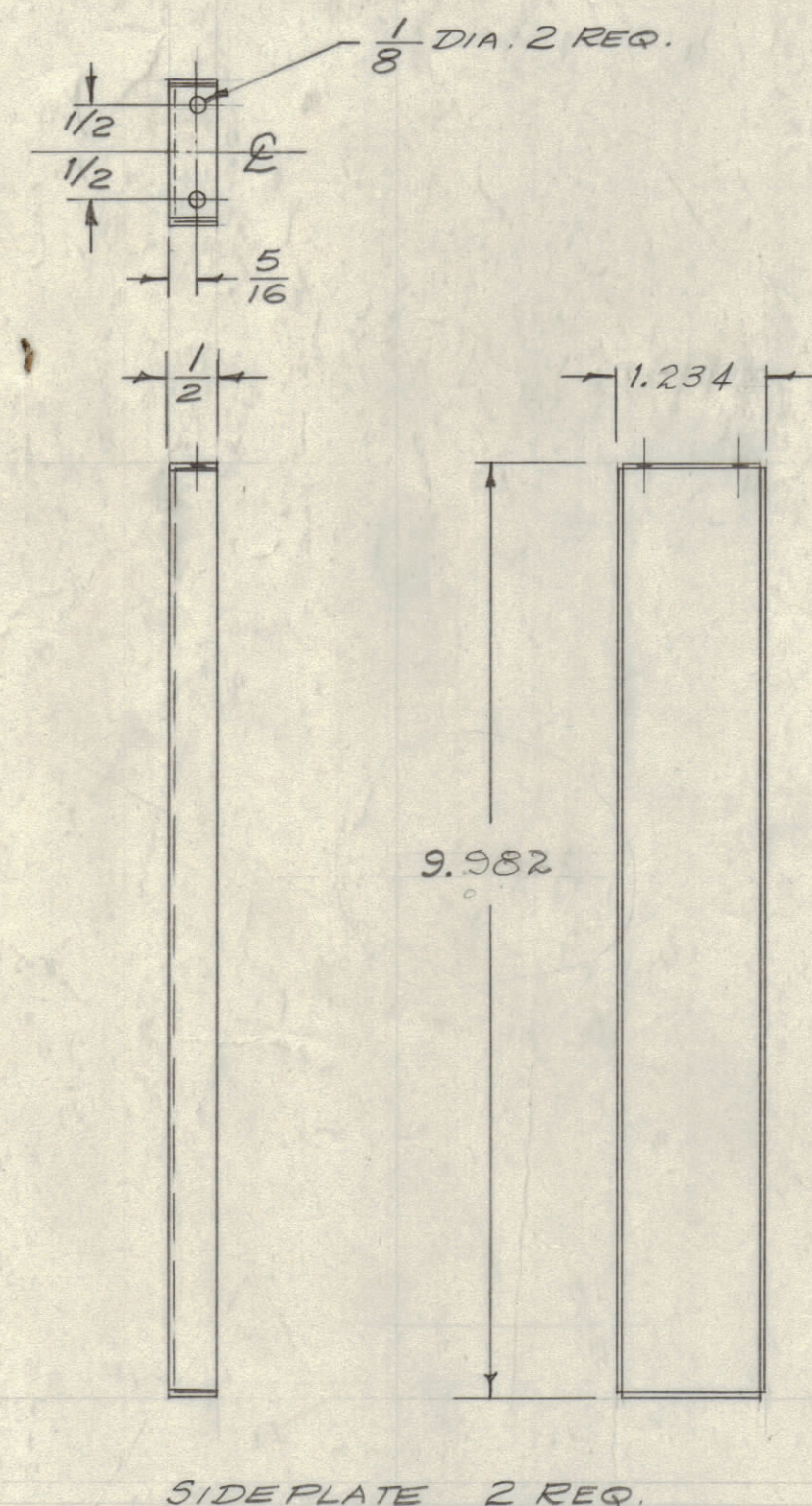
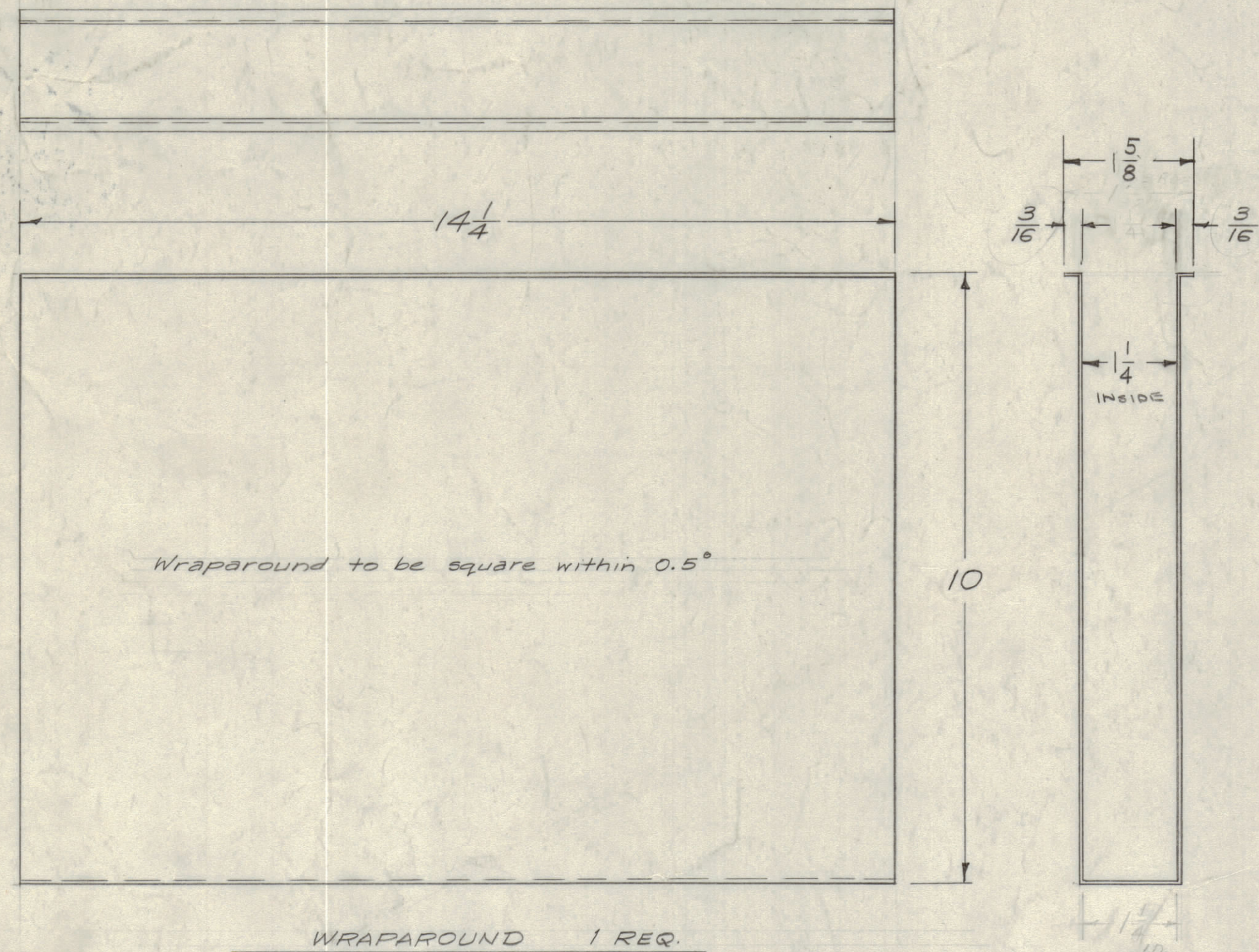
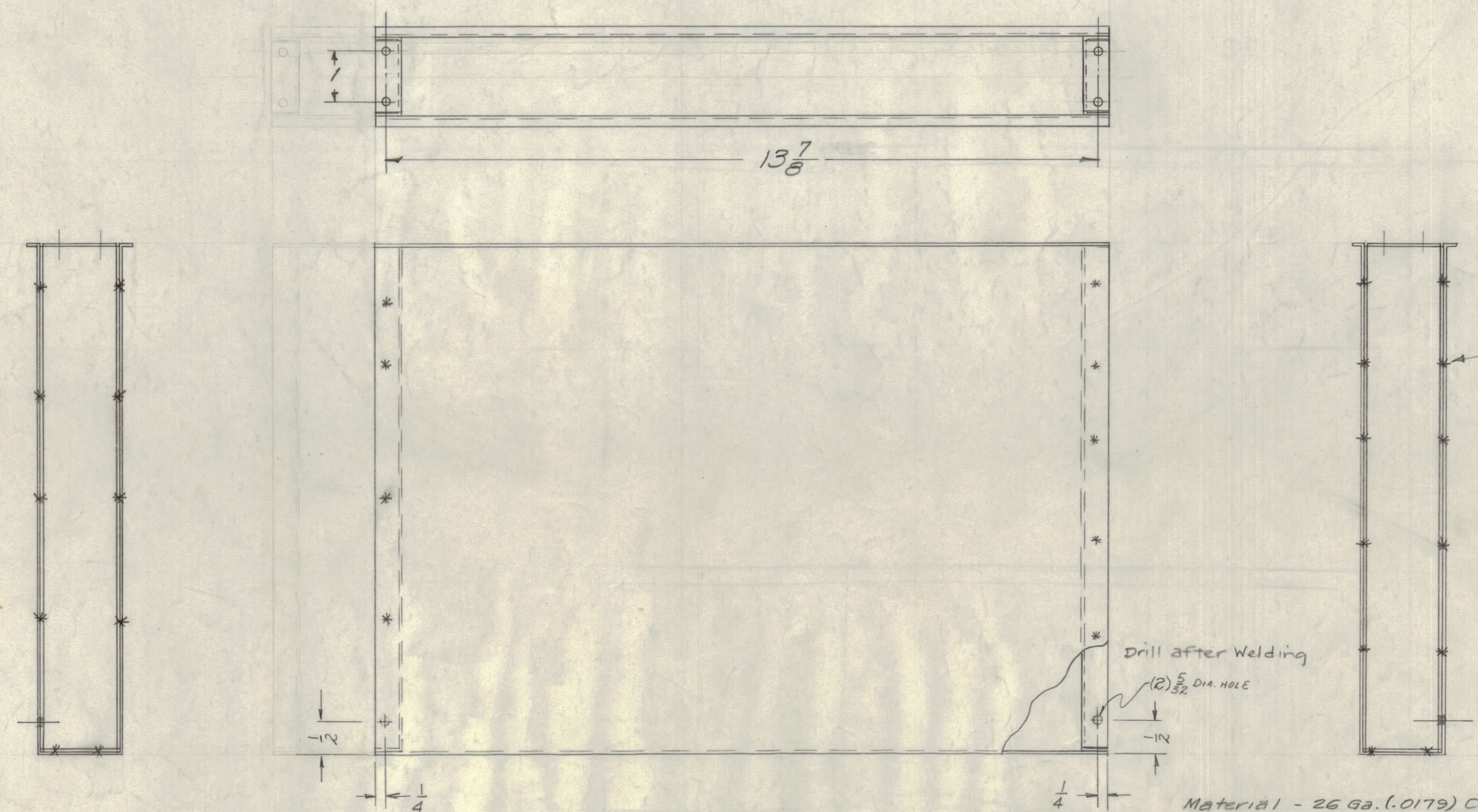


IF IT IS FOUND DESIRABLE TO CHANGE ANY TOLERANCE OR OTHER DETAIL SPECIFIED ON THIS DRAWING NOTIFY THE PURCHASER PROMPTLY.
 MAXIMUM ALLOWABLE TOLERANCES HAVE BEEN DETERMINED AND DEVIATIONS WILL BE CAUSE FOR REJECTION. REMOVE ALL BURRS AND SHARP EDGES



MS-1311 E



Spotweld all around on both sides.
 (Use as many Spotwelds as practical for maximum strength & dependability)

FINISH NOTE:
 S371 Steel Degreasing
 S105 Cadmium Plate
 S114 Zinc Chromate Primer
 S115 Smooth Grey Enamel
 OR Prime & Paint to Customers Spec.

Material - 26 ga. (.0179) Cold Rolled Steel.
 Surfaces to be Free of all Imperfections.

NOTICE TO PERSONS RECEIVING THIS DRAWING
 THE TECHNICAL MATERIEL CORPORATION claims proprietary right in the material disclosed hereon. This drawing is issued in confidence for engineering information only and may not be reproduced or used to manufacture anything shown hereon without permission from THE TECHNICAL MATERIEL CORPORATION to the user. This drawing is loaned for mutual assistance and is subject to recall at any time.

Property of:
 THE TECHNICAL MATERIEL CORPORATION
 MAMARONECK, NEW YORK

ISSUE	ITEM	CHANGED FROM	DATE	CN. NO.	DRAFTS	CHECKER	ENG. APP.
E	1	S105 ADDED TO FINISH NOTE	9-4-53	9800	AK		
D	2	ADDED REF. REDIMENSIONED	8-3-53		BLD		
C	1	ADDED (2) 5/32 HOLE	5/13/53		ASC	H	
B	2	ADDED REF. REDIMENSIONED	4/11/53		ASC		
A	1	2.982 WAS 2.964	3/16/53	427	HOR	JDC	

REQ. ITEM	PART NO.	DESCRIPTION	SYMBOL
26 Gage (.0179)		THE TECHNICAL MATERIEL CORP. MAMARONECK, NEW YORK	
Steel		UTILITY COMPARTMENT	
Cold Rolled			
TYPE & TEMPER		168-4-58	
HEAT TREAT. SPEC.			
SEE NOTE			
FINISH & SPEC. NO.			

REQ PER UNIT	MODEL	PROJECT NO.	ASSY. NO.	DATE
1				8-4-58