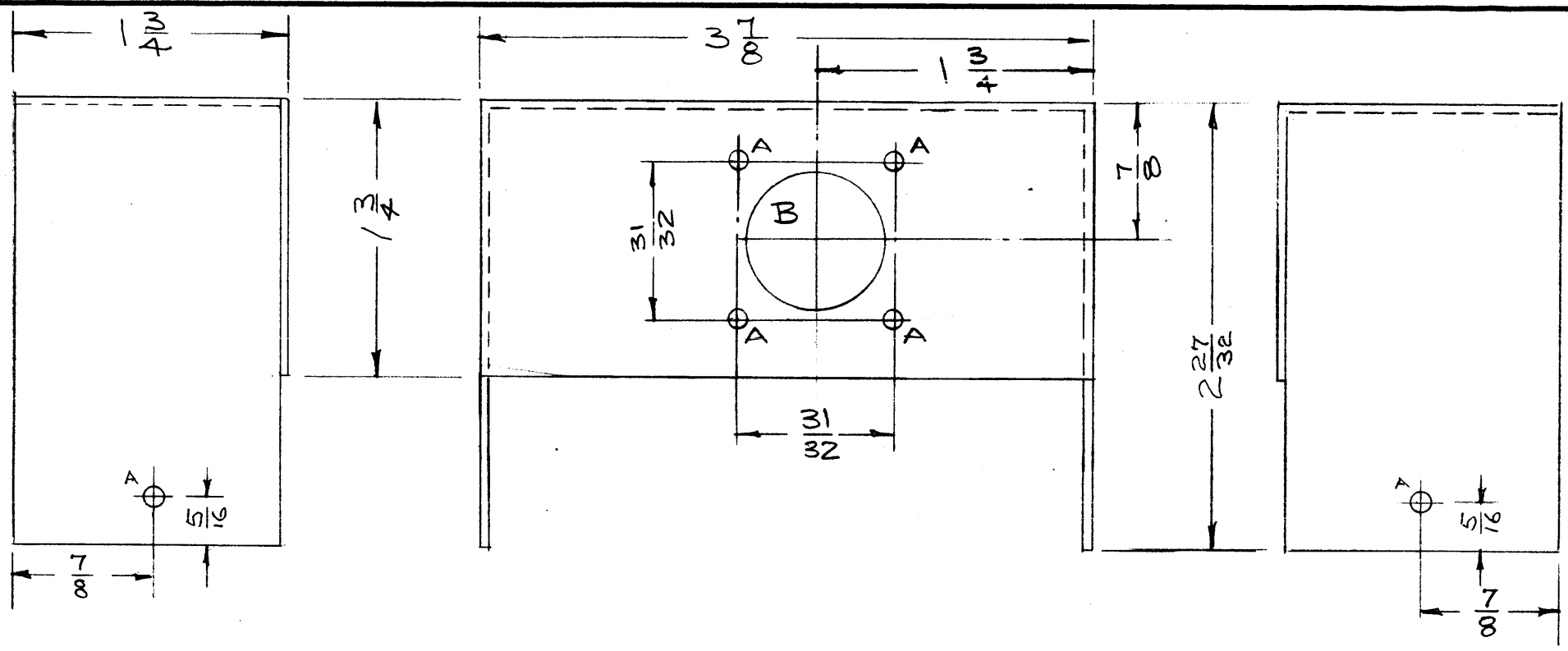


MS-1200 B



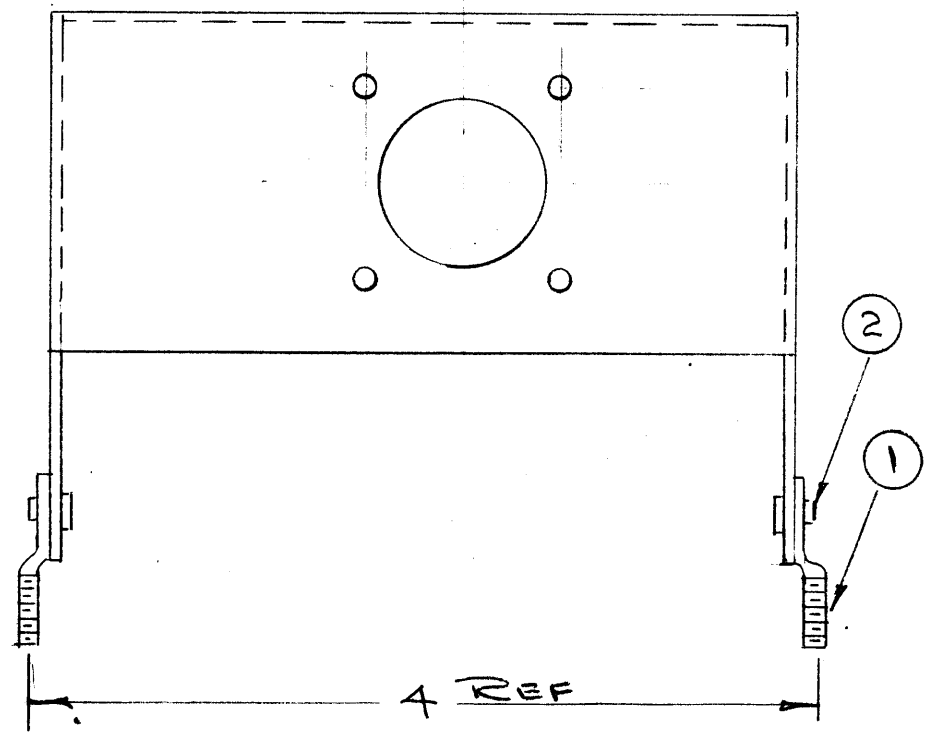
STAGE 1 METAL STAMPING
 A = 1/8 DIA. 6 HOLES REQ.
 B = 1" DIA. 1 HOLE REQ.

NOTICE TO PERSONS RECEIVING THIS DRAWING

THE TECHNICAL MATERIEL CORPORATION claims proprietary right in the material disclosed hereon. This drawing is issued in confidence for engineering information only and may not be reproduced or used to manufacture anything shown hereon without permission from THE TECHNICAL MATERIEL CORPORATION to the user. This drawing is loaned for mutual assistance and is subject to recall at any time.

Property of:
 THE TECHNICAL MATERIEL CORPORATION
 MAMARONECK, NEW YORK

FINISH:
 S-404 YELLOW IRIDITE



STAGE 2 SPADE LUG ASSEMBLY

REF: LD-383(2) STAMPING

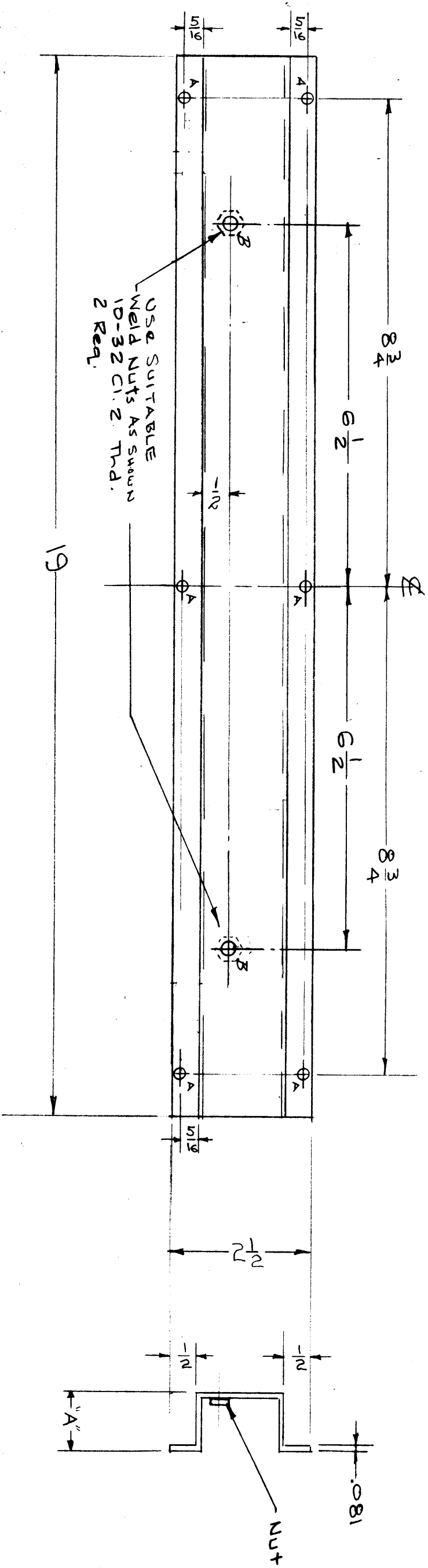
ISSUE	ITEM	CHANGED FROM	DATE	CH. NO.	DRAFTS	CHECKER	ENG. APP.
B	1	S-404 WAS S-101	12/14/59	1001	AK		EMN
A	1	"B" Hole was 7/8"	3/28/58	1	AK	AK	AK

TOLERANCES		SCALE:
DEC. DIM. ±		MAXIMUM ALLOWABLE TOLERANCES HAVE BEEN DETERMINED AND ANY DEVIATIONS WILL BE CAUSE FOR REJECTION. REMOVE ALL BURRS AND SHARP EDGES
FRAC. DIM. ±		
ANGULAR DIM. ±		

REQ. PER UNIT	MODEL	PROJECT NO.	ASS'Y. NO.	DATE
1	A-1279-1			3-3-58

REQ. ITEM	PART NO.	DESCRIPTION	SYMBOL
2	2	EY-100-2	EYELET, FLAT FLANGE
2	1	SC-107-1	SPADE LUG
.051		THE TECHNICAL MATERIEL CORP.	
STOCK SIZE		MAMARONECK, NEW YORK	
ALUMINUM		COVER,	
MATERIAL		CONNECTOR CHASSIS	
5052-H32		TYPE & TEMPER	HEAT TREAT. SPEC.
SEE NOTE		DRAWN	CHECKED
FINISH & SPEC. NO.		ELEC. DES. APP.	MECH. DES. APP.

MS-1200 B



T M C PART NO.	DIMENSION	USED ON MODEL	QUAN.
MS-1215-1	1 1/32	RAK-4 CR-2416/U	1
MS-1215-2	7/8	RAK-4A	1

ISSUE ITEM	CHANGED FROM	DATE	CH. NO.	DRAFTS	CHECKER	ENG. APP.
E 2	ON FINISH (S404 DELE. S371 ADD.)	1/28/65	13376	MRB	EMN	
D 1	CHART ADDED (S371 WAS MS1215)	5/11/60	2248	QV	EMN	
C 1	S-404 WAS S-101	9/14/59	1001	RA3	EMN	
B 1	MATL. WAS - 081 ALUM. 1/8" HOLE WAS SUFF. NUTS ADDED	9/2/58	440	W	EMN	
A 1	TWO 1/4" HOLES LOCATED	6/24/58		W	EMN	

DEC. DIM. ±	FRAC. DIM. ±	ANGULAR DIM. ±	TOLERANCES	SCALE:	MAXIMUM ALLOWABLE TOLERANCES HAVE BEEN DETERMINED AND ANY DEVIATIONS WILL BE CAUSE FOR REJECTION. REMOVE ALL BURRS AND SHARP EDGES
	1/64				

REQ. ITEM	PART NO.	DESCRIPTION	SYMBOL
1/2 GA.		THE TECHNICAL MATERIEL CORP. MAMARONECK, NEW YORK	
STEEL		CHASSIS SUPPORT	

TYPE & TEMPER	HEAT TREAT. SPEC.	DRAWN	CHECKED	FINAL APPR. VAL.
SEE NOTE		AW 4/3/58	EMN	MS-1215-1 E

NOTICE TO PERSONS RECEIVING THIS DRAWING

THE TECHNICAL MATERIEL CORPORATION claims proprietary right in the material disclosed herein. This drawing is issued in confidence for engineering information only and may not be reproduced or used to manufacture anything shown hereon without permission from THE TECHNICAL MATERIEL CORPORATION to the user. This drawing is loaned for mutual assistance and is subject to recall at any time.

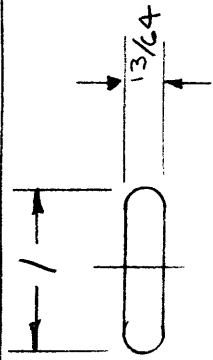
Property of:
 THE TECHNICAL MATERIEL CORPORATION
 MAMARONECK, NEW YORK

FINISH:
 S-371 DEGREASING, STEEL
 S-114 ZINC CHROMATE PRIMER
 S-115 SMOOTH GRAY ENAMEL

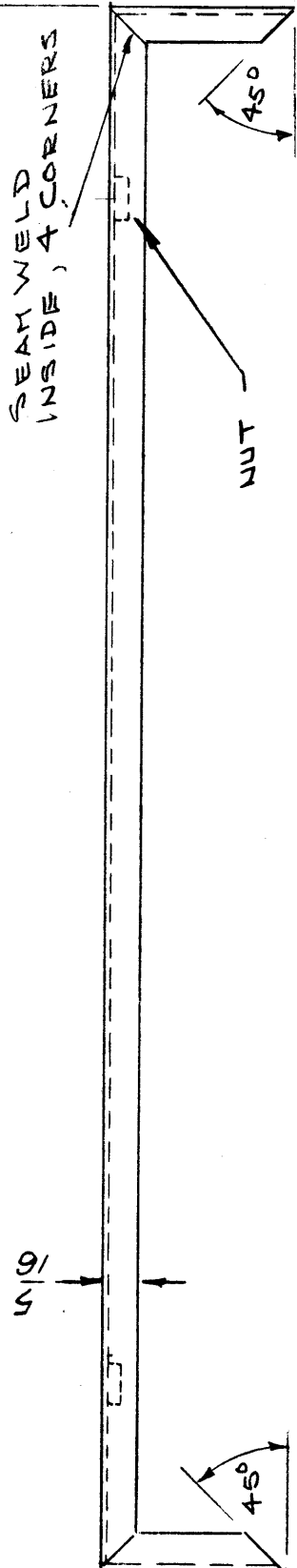
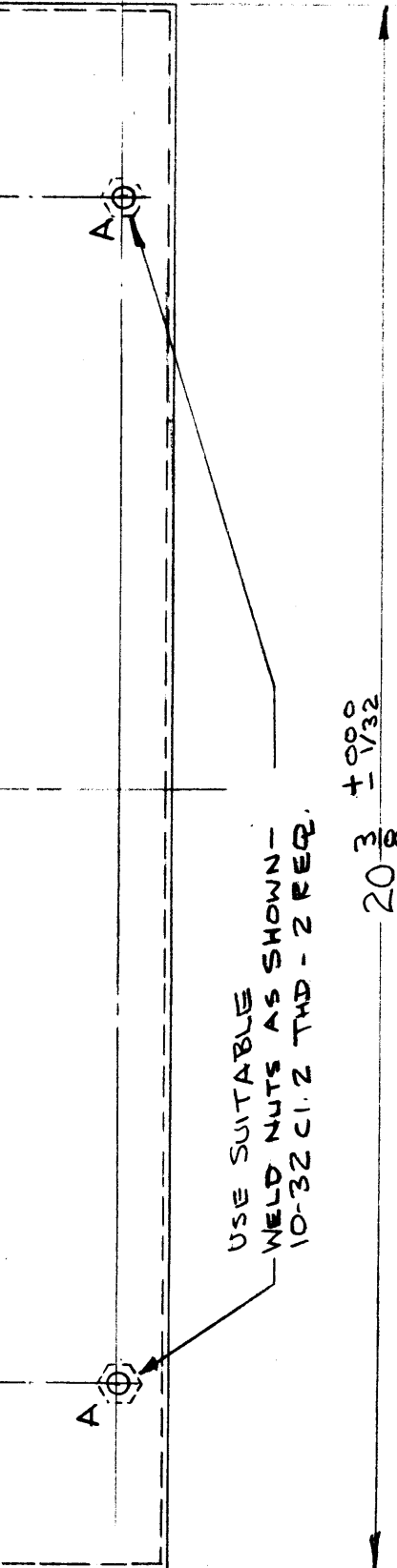
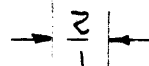
HOLE LEGEND
 A = 13/64 DIA. 6 HOLES
 B = 1/4 DIA. 2 HOLES

MS-1219 B

A - 1/4 (.250) D. 2 REQ.

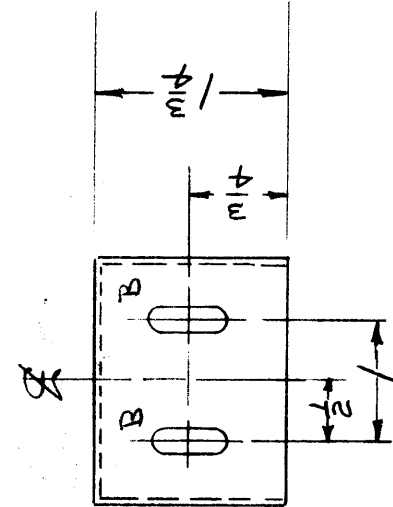


B - DETAIL - 4 REQ.



NOTICE TO PERSONS RECEIVING THIS DRAWING
 THE TECHNICAL MATERIEL CORPORATION claims proprietary right in the material disclosed hereon. This drawing is issued in confidence for engineering information only and may not be reproduced or used to manufacture anything shown hereon without permission from THE TECHNICAL MATERIEL CORPORATION to the user. This drawing is loaned for mutual assistance and is subject to recall at any time.

Property of:
 THE TECHNICAL MATERIEL CORPORATION
 MAMARONECK, NEW YORK



FINISH 8
 S-371 DEGREASING, STEEL
 S-114 ZINC CHROMATE PRIMER
 S-115 SMOOTH GRAY ENAMEL

REF: MS-1216-1

ISSUE ITEM	CHANGED FROM	DATE	CH. NO.	DRAFTS	CHECKER	ENG. APP.
B	5/16 WAS 1/4	10-14-58	464	J.C.B.	<i>[Signature]</i>	<i>[Signature]</i>
A	"A" HOLE WAS SLOTTED TO A HOLE CHAMFERED NUTS ADDED - MATL WAS 1/4 GA.	9/2/58	440	16	<i>[Signature]</i>	<i>[Signature]</i>

TOLERANCES
 DEC. DIM. ±
 FRAC. DIM. ± 1/64
 ANGULAR DIM. ± 1°

SCALE:
 MAXIMUM ALLOWABLE TOLERANCES HAVE BEEN DETERMINED AND ANY DEVIATIONS WILL BE CAUSE FOR REJECTION.
 REMOVE ALL BURRS AND SHARP EDGES

REQ. ITEM	PART NO.	DESCRIPTION	SYMBOL
12 GA.		THE TECHNICAL MATERIEL CORP. MAMARONECK, NEW YORK	
STEEL		BRACKET, SUPPORT, UNIT	
COLD ROLLED			
TYPE & TEMPER			
HEAT TREAT. SPEC.			
SEE NOTE			
FINISH & SPEC. NO.			
FINISH & SPEC. NO.			
FINISH & SPEC. NO.			

REQ. PER UNIT	MODEL	PROJECT NO.	ASSY. NO.	DATE
2	CY-2416/U		A-1524	4/30/58
	PAK-4			

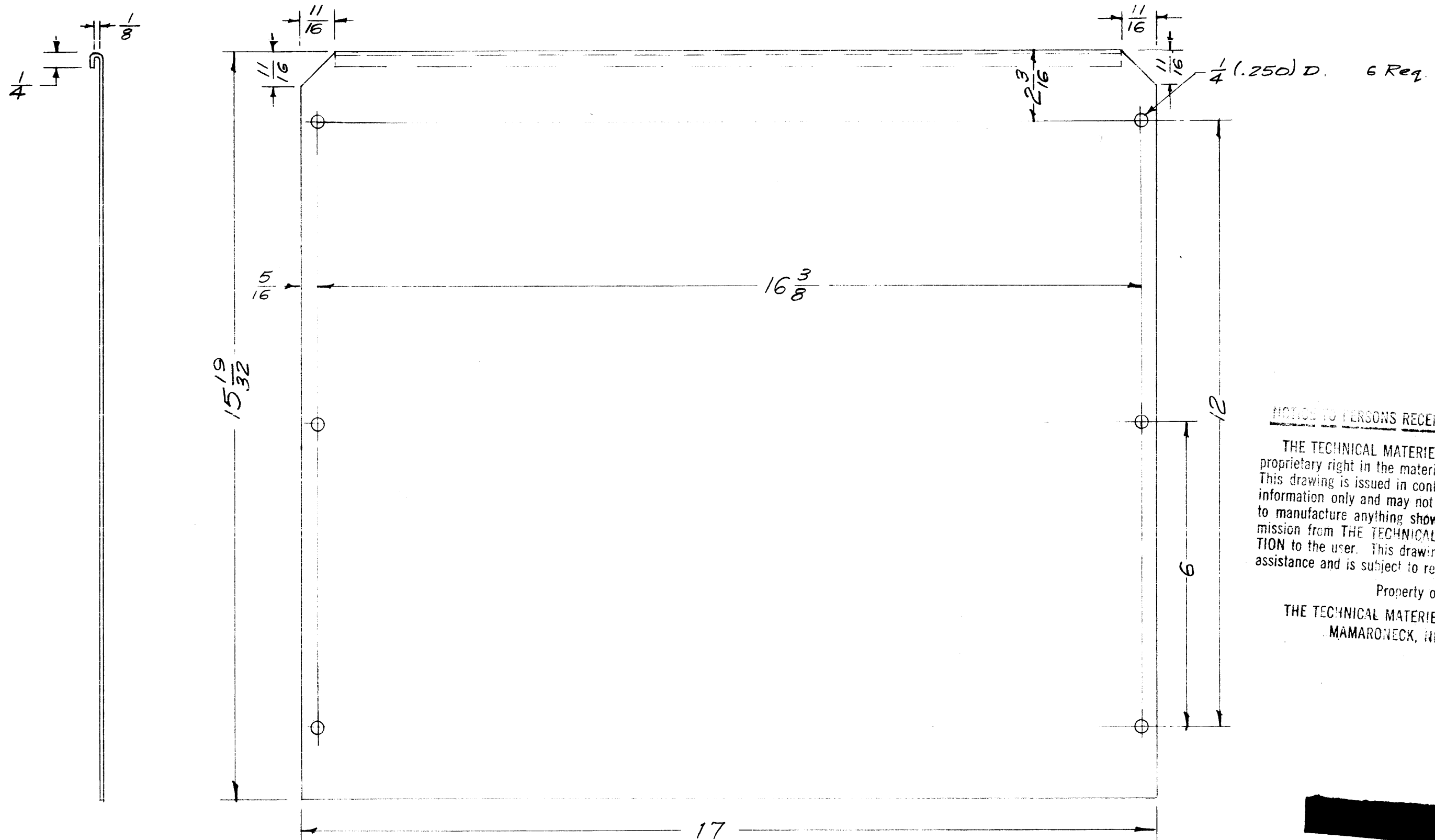
USED ON

NAVY NO.
 TMC NO.

DRYER
 DRAWN
 CHECKED
 FINAL APPROVAL

MS-1219 B

MS-1222 B



NOTICE TO PERSONS RECEIVING THIS DRAWING
 THE TECHNICAL MATERIEL CORPORATION claims proprietary right in the material disclosed hereon. This drawing is issued in confidence for engineering information only and may not be reproduced or used to manufacture anything shown hereon without permission from THE TECHNICAL MATERIEL CORPORATION to the user. This drawing is loaned for mutual assistance and is subject to recall at any time.
 Property of:
 THE TECHNICAL MATERIEL CORPORATION
 MAMARONECK, NEW YORK

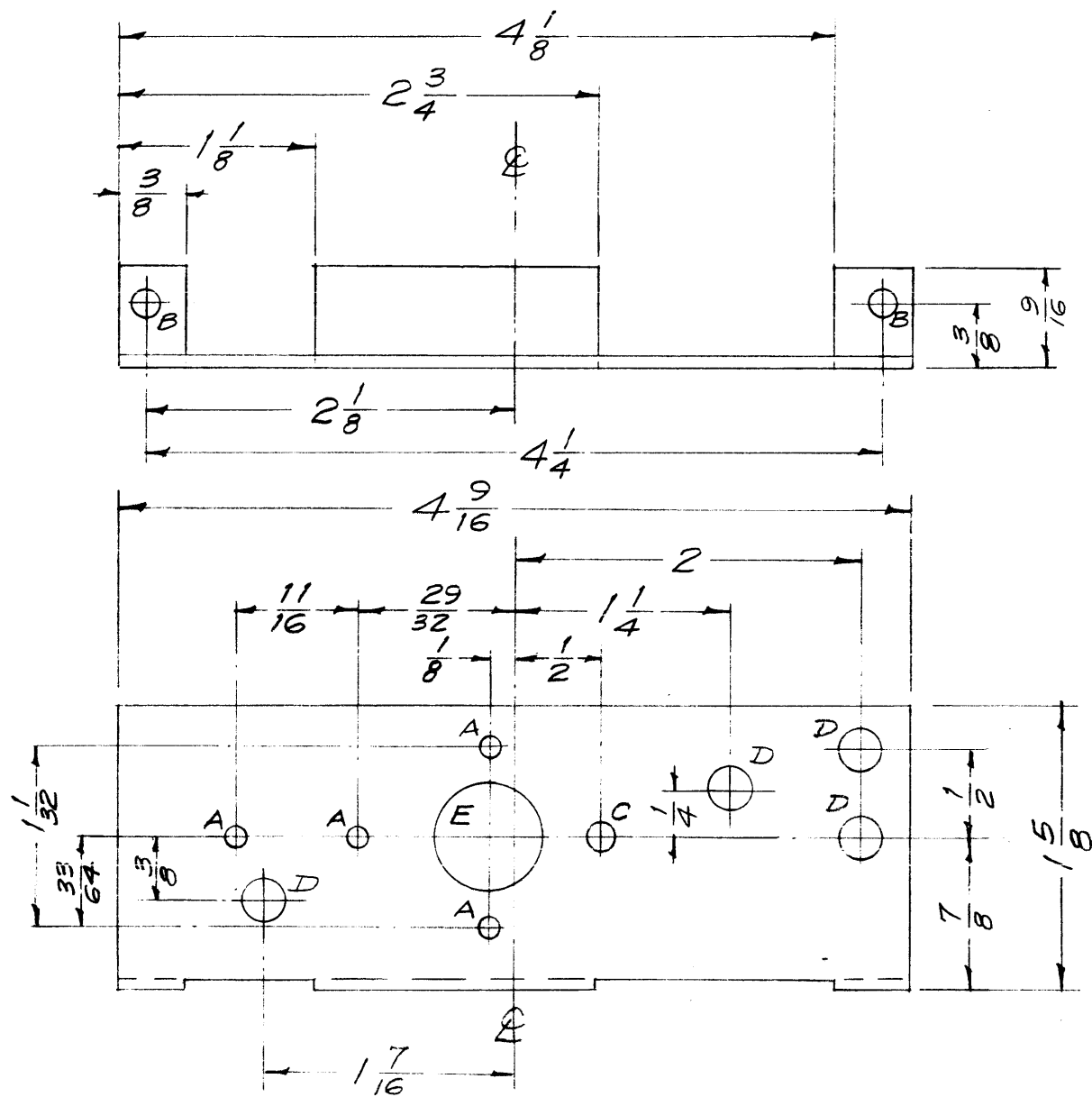
ISSUE	ITEM	CHANGED FROM	DATE	CH. NO.	DRAFTS	CHECKER	ENG. APP.
B	1	S-404 WAS S-101	12/14/59	1001	MS		EMN
A	1	COMPL. REV.	7/9/58	405	16		

TOLERANCES: DEC. DIM. ±, FRAC. DIM. ±1/64, ANGULAR DIM. ±

SCALE: MAXIMUM ALLOWABLE TOLERANCES HAVE BEEN DETERMINED AND ANY DEVIATIONS WILL BE CAUSE FOR REJECTION. REMOVE ALL BURRS AND SHARP EDGES

1	PSP-350	PAL-350		4/28/58
REQ. PER UNIT	MODEL	PROJECT NO.	ASS'Y. NO.	DATE
USED ON				

REQ. ITEM	PART NO.	DESCRIPTION	SYMBOL
	.051 THK.	THE TECHNICAL MATERIEL CORP.	
	STOCK SIZE	MAMARONECK, NEW YORK	
	ALUMINUM	COVER, BOTTOM	
	MATERIAL		
5052-H32		10/28/58	
TYPE & TEMPER	HEAT TREAT. SPEC.	DRAWN	CHECKED
S-404 YELLOW IRIDITE			
FINISH & SPEC. NO.	ELEC. DES. APP.	MECH. DES. APP.	
			MS-1222 B



- A - 1/8 (.125) D. 4 Req.
- B - 1/64 (.171) D. 2 Req.
- C - 5/32 (.156) D. 1 Req.
- D - 1/4 (.250) D. 4 Req.
- E - 5/8 (.625) D. 1 Req.

NOTICE TO PERSONS RECEIVING THIS DRAWING
 THE TECHNICAL MATERIEL CORPORATION claims proprietary right in the material disclosed hereon. This drawing is issued in confidence for engineering information only and may not be reproduced or used to manufacture anything shown hereon without permission from THE TECHNICAL MATERIEL CORPORATION to the user. This drawing is loaned for mutual assistance and is subject to recall at any time.
 Property of:
 THE TECHNICAL MATERIEL CORPORATION
 MAMARONECK, NEW YORK

ISSUE	ITEM	CHANGED FROM	DATE	CH. NO.	DRAFTS	CHECKER	ENG. APP.
B	1	S-404 WAS S-101	2/14/59	1001	AB		EMN
A	2	2" Hole was #18 Dr. (.164)	5/24/58	1	16	REB	[Signature]
	1	ONE D" Hole Added					

TOLERANCES: DEC. DIM. ±, FRAC. DIM. ± 1/64, ANGULAR DIM. ±

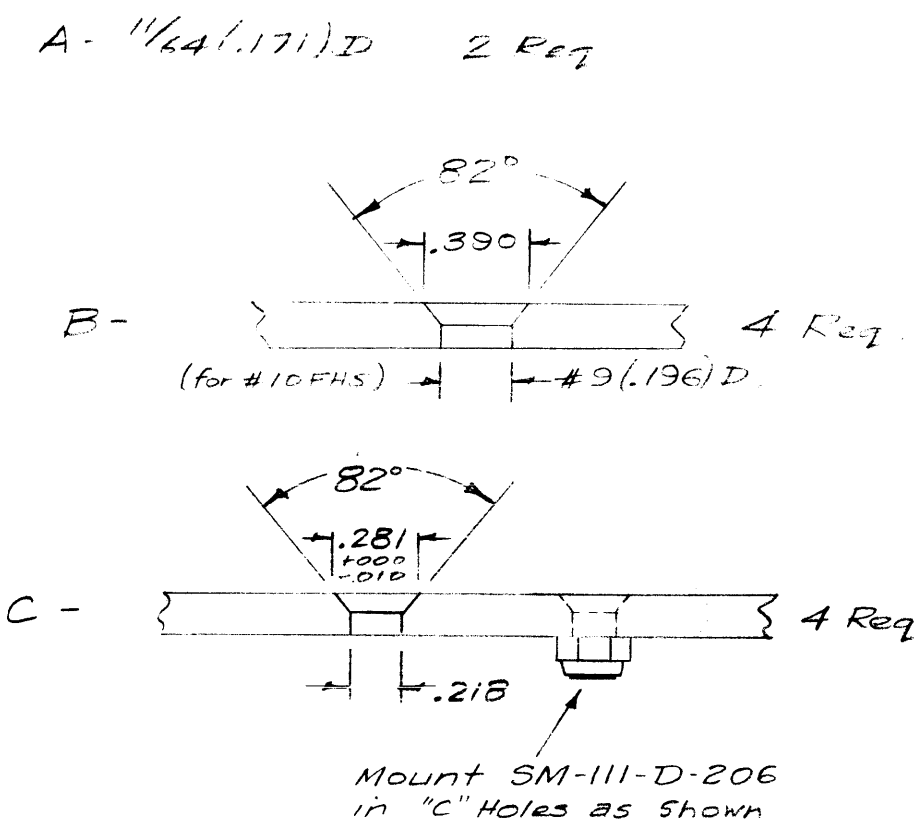
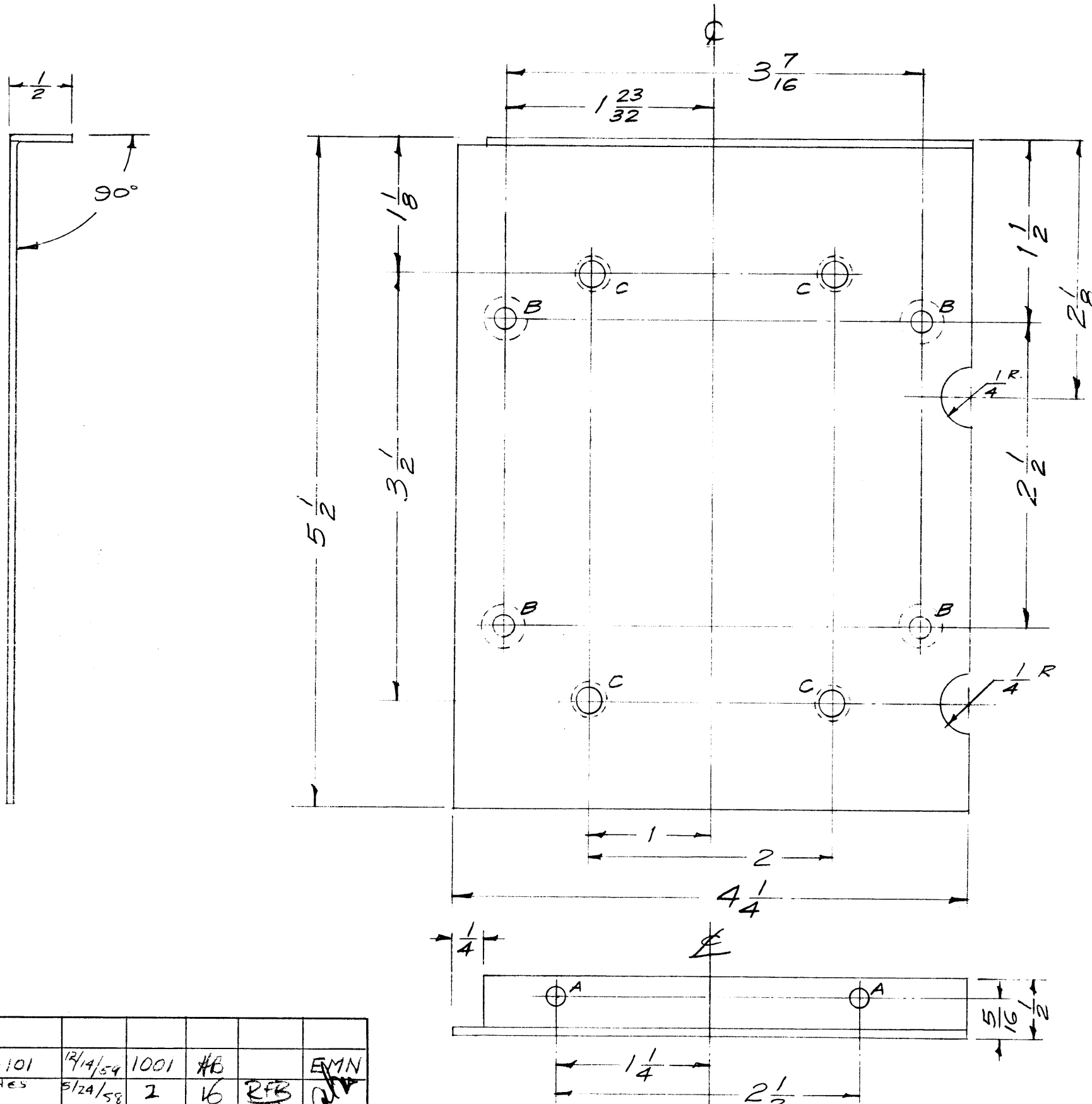
SCALE: FULL

MAXIMUM ALLOWABLE TOLERANCES HAVE BEEN DETERMINED AND ANY DEVIATIONS WILL BE CAUSE FOR REJECTION. REMOVE ALL BURRS AND SHARP EDGES

1	RFA-1	PAL-350		4-30-58
REQ. PER UNIT	MODEL	PROJECT NO.	ASS'Y. NO.	DATE
USED ON				

Ref-ILD-424

REQ. ITEM	PART NO.	DESCRIPTION	SYMBOL
	.064 THK.	THE TECHNICAL MATERIEL CORP. MAMARONECK, NEW YORK	
	STOCK SIZE		
	Aluminum	BRACKET, SWITCH	
		MOUNTING	
5052-H32		6/4/58 [Signature]	[Signature]
		DRAWN	CHECKED
		TYPE & TEMPER	HEAT TREAT. SPEC.
	S-404 YELLOW IRIDITE	REB	MS-1245 B
	FINISH & SPEC. NO.	ELEC. DES. APP.	MECH. DES. APP.



NOTICE TO PERSONS RECEIVING THIS DRAWING

THE TECHNICAL MATERIEL CORPORATION claims proprietary right in the material disclosed hereon. This drawing is issued in confidence for engineering information only and may not be reproduced or used to manufacture anything shown hereon without permission from THE TECHNICAL MATERIEL CORPORATION to the user. This drawing is loaned for mutual assistance and is subject to recall at any time.

Property of:
THE TECHNICAL MATERIEL CORPORATION
MAMARONECK, NEW YORK

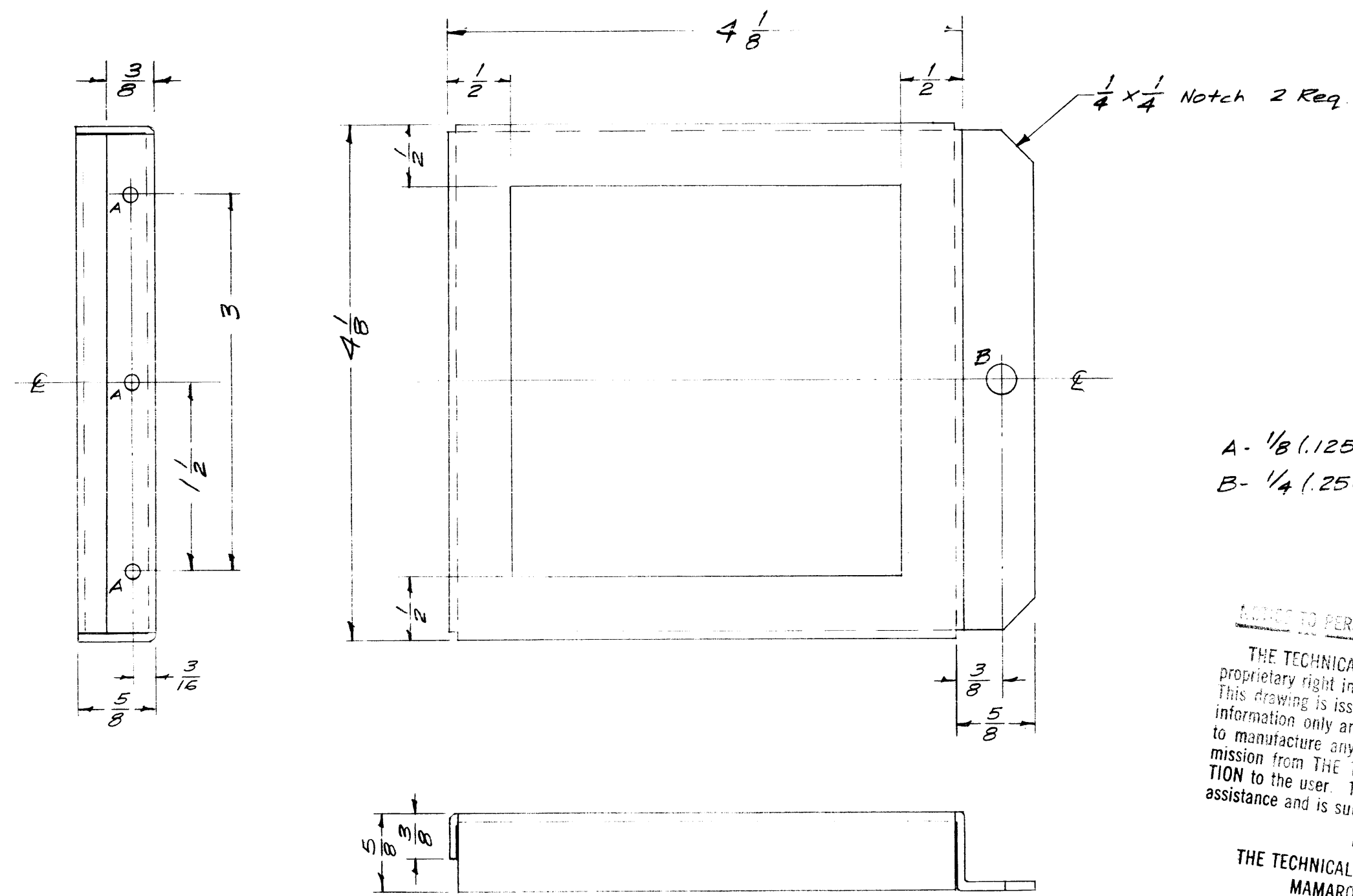
C	1	S-404 WAS S-101	12/14/54	1001	#6		EMN
B	1	TWO 1/4 R. NOTCHES ADDED	5/24/58	2	16	RFB	
A	1	ANGULAR TOL. ADDED 90° ADDED	5/19/58	1	16		
ISSUE	ITEM	CHANGED FROM	DATE	CH. NO.	DRAFTS	CHECKER	ENG. APP.

TOLERANCES		SCALE: FULL	
DEC. DIM. \pm	MAXIMUM ALLOWABLE TOLERANCES HAVE BEEN DETERMINED AND ANY DEVIATIONS WILL BE CAUSE FOR REJECTION.		
FRAC. DIM. \pm 1/64	REMOVE ALL BURRS AND SHARP EDGES		
ANGULAR DIM. \pm .5°			

1	RFA-1	PAL-350	5-9-58
REQ. PER UNIT	MODEL	PROJECT NO.	DATE
		ASS'Y. NO.	
USED ON			

REQ. ITEM	PART NO.	DESCRIPTION	SYMBOL
	.064 THK.	THE TECHNICAL MATERIEL CORP. MAMARONECK, NEW YORK	
	STOCK SIZE		
	ALUMINUM	BASE, TRANSFORMER MTS., PA BANDSWITCH.	
	5052-H32	16 5/19/58	
		TYPE & TEMPER	HEAT TREAT. SPEC.
	S-404 YELLOW IRIDITE	DRAWN	CHECKED
		FINISH & SPEC. NO.	ELEC. DES. APP. MECH. DES. APP.
			MS-1247 C

MS-1248 B



A - 1/8 (.125) D. 3 Req.
 B - 1/4 (.250) D. 1 Req.

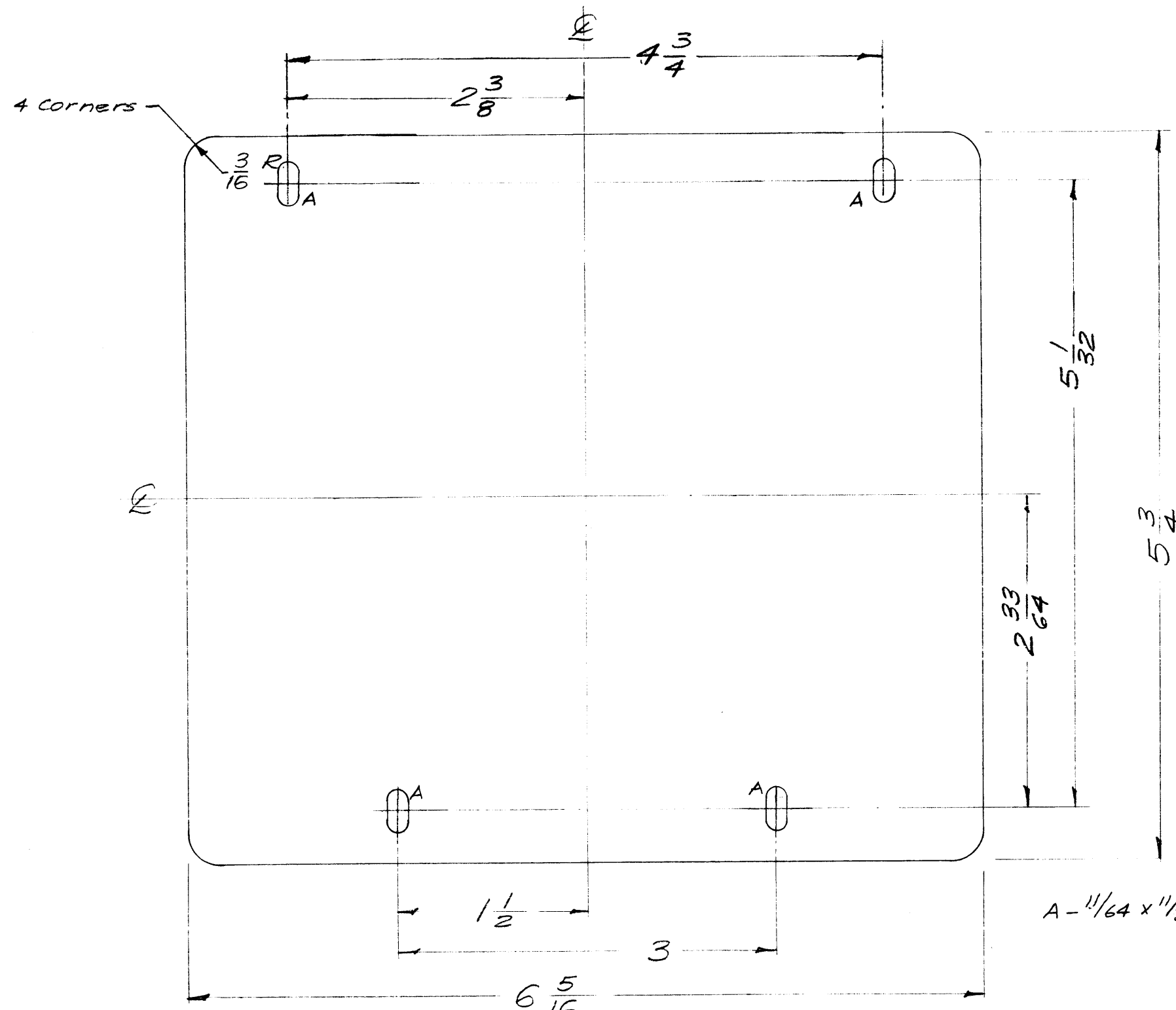
NOTICE TO PERSONS RECEIVING THIS DRAWING
 THE TECHNICAL MATERIEL CORPORATION claims proprietary right in the material disclosed hereon. This drawing is issued in confidence for engineering information only and may not be reproduced or used to manufacture anything shown hereon without permission from THE TECHNICAL MATERIEL CORPORATION to the user. This drawing is loaned for mutual assistance and is subject to recall at any time.
 Property of:
 THE TECHNICAL MATERIEL CORPORATION
 MAMARONECK, NEW YORK

ISSUE	ITEM	CHANGED FROM	DATE	CH. NO.	DRAFTS	CHECKER	ENG. APP.
B	1	S-404 WAS S-101	12/14/59	1001	ARB		EMN
A	1	LIP WAS 5/8" - cut down to 3/8"	6/2/58	1	LG		<i>[Signature]</i>
TOLERANCES		SCALE: FULL					
DEC. DIM. ±		MAXIMUM ALLOWABLE TOLERANCES HAVE BEEN DETERMINED AND ANY DEVIATIONS WILL BE CAUSE FOR REJECTION.					
FRAC. DIM. ± 1/64		REMOVE ALL BURRS AND SHARP EDGES					
ANGULAR DIM. ±							

REQ. PER UNIT	MODEL	PROJECT NO.	ASS'Y. NO.	DATE
1	RFA-1	PAL-350	A-1538 (2)	5-12-58
USED ON				

REQ. ITEM	PART NO.	DESCRIPTION	SYMBOL
	.064 THK.	THE TECHNICAL MATERIEL CORP. MAMARONECK, NEW YORK	
	STOCK SIZE		
	ALUMINUM	COVER, AIR FILTER	
	MATERIAL		
5052-H32		5 5/12/58	<i>[Signature]</i>
	TYPE & TEMPER	DRAWN	CHECKED
S-404 YELLOW IRIDITE		<i>[Signature]</i>	<i>[Signature]</i>
	FINISH & SPEC. NO.	ELEC. DES. APP.	MECH. DES. APP.
			MS-1248 B

MS-1249 C



NOTICE TO PERSONS RECEIVING THIS DRAWING

THE TECHNICAL MATERIEL CORPORATION claims proprietary right in the material disclosed hereon. This drawing is issued in confidence for engineering information only and may not be reproduced or used to manufacture anything shown hereon without permission from THE TECHNICAL MATERIEL CORPORATION to the user. This drawing is loaned for mutual assistance and is subject to recall at any time.

Property of:
THE TECHNICAL MATERIEL CORPORATION
 MAMARONECK, NEW YORK

A - 1/64 x 1/32 SLOT 4 Req.

For MS-1237 (CHASSIS)

ISSUE	ITEM	CHANGED FROM	DATE	CH. NO.	DRAFTS	CHECKER	ENG. APP.
C	1	S-404 WAS S101	12/14/54	1001	HAB		EMN
B	2	S-1/32 WAS 4-21/32	7/1/58	404	16	HAB	
B	1	4-3/4 WAS 3-1/2					
B	1	"A" HOLE WAS 3/16 D.					
A	1	"A" HOLE SIZE WAS 9/64 D.	6/6/58	1	16	HAB	

SCALE: FULL

TOLERANCES
 DEC. DIM. ±
 FRAC. DIM. ± 1/64
 ANGULAR DIM. ±

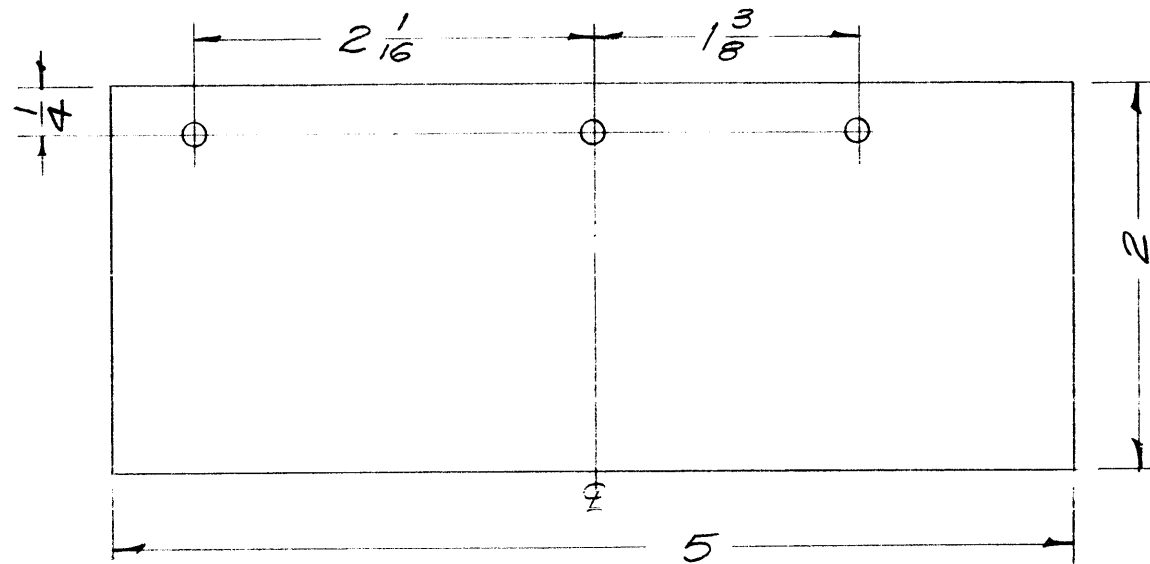
MAXIMUM ALLOWABLE TOLERANCES HAVE BEEN DETERMINED AND ANY DEVIATIONS WILL BE CAUSE FOR REJECTION. REMOVE ALL BURRS AND SHARP EDGES

REQ. PER UNIT	MODEL	PROJECT NO.	ASS'Y. NO.	DATE
1	RFA-1	PAL 300		5/17/58

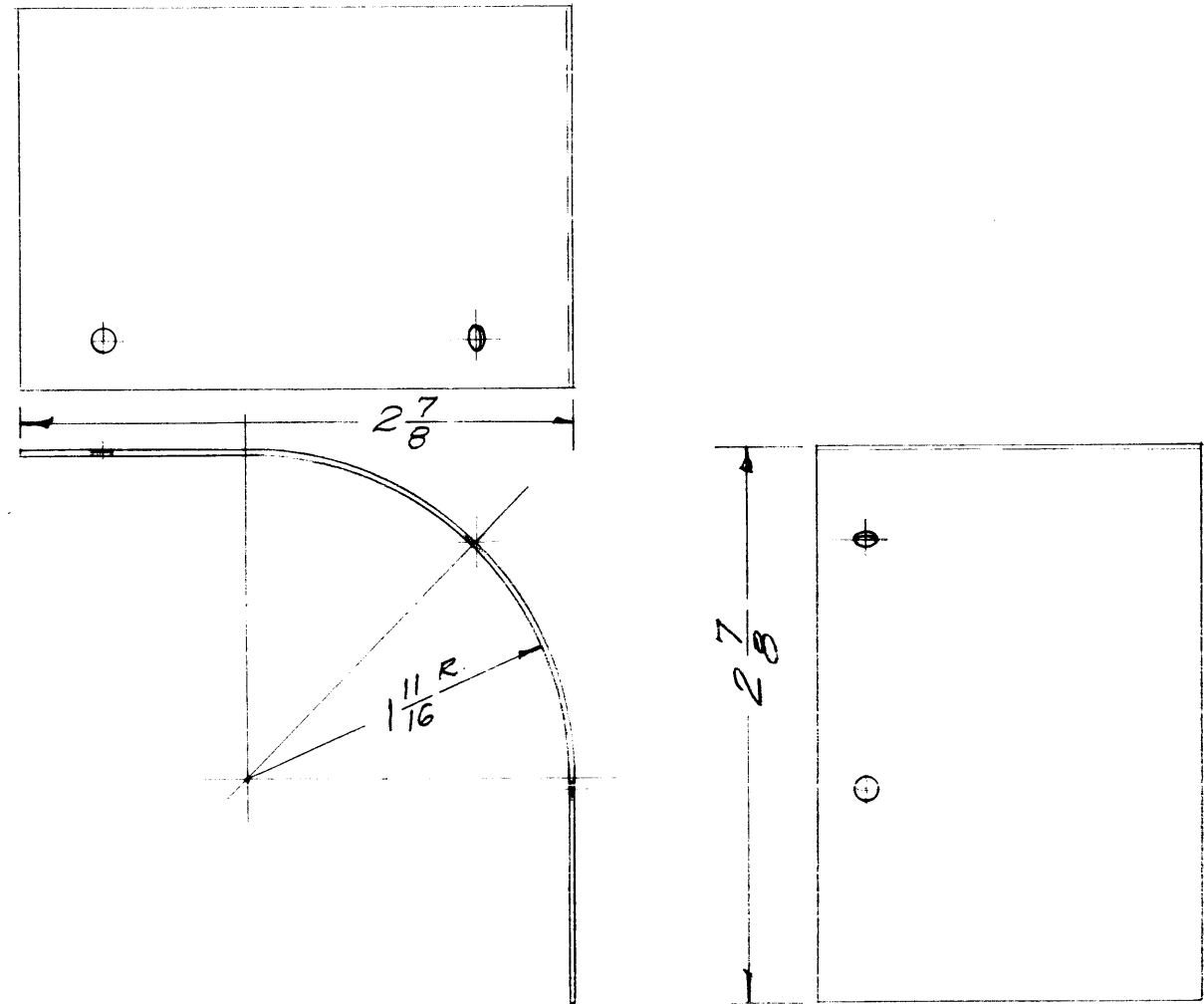
USED ON

REQ. ITEM	PART NO.	DESCRIPTION	SYMBOL
.064 THK		THE TECHNICAL MATERIEL CORP. MAMARONECK, NEW YORK	COVER, RF SECTION
STOCK SIZE			
ALUMINUM		CHASSIS	
MATERIAL			
6052-H32		16 5/11/58	
TYPE & TEMPER		HEAT TREAT. SPEC.	DRAWN
S-404 YELLOW IRIDITE			CHECKED
FINISH & SPEC. NO.		ELEC. DES. APP.	MECH. DES. APP.
			MS-1249 C

MS-1254 A



FLAT LAYOUT



BENDING

NOTICE TO PERSONS RECEIVING THIS DRAWING

THE TECHNICAL MATERIEL CORPORATION claims proprietary right in the material disclosed hereon. This drawing is issued in confidence for engineering information only and may not be reproduced or used to manufacture anything shown hereon without permission from THE TECHNICAL MATERIEL CORPORATION to the user. This drawing is loaned for mutual assistance and is subject to recall at any time.

Property of:

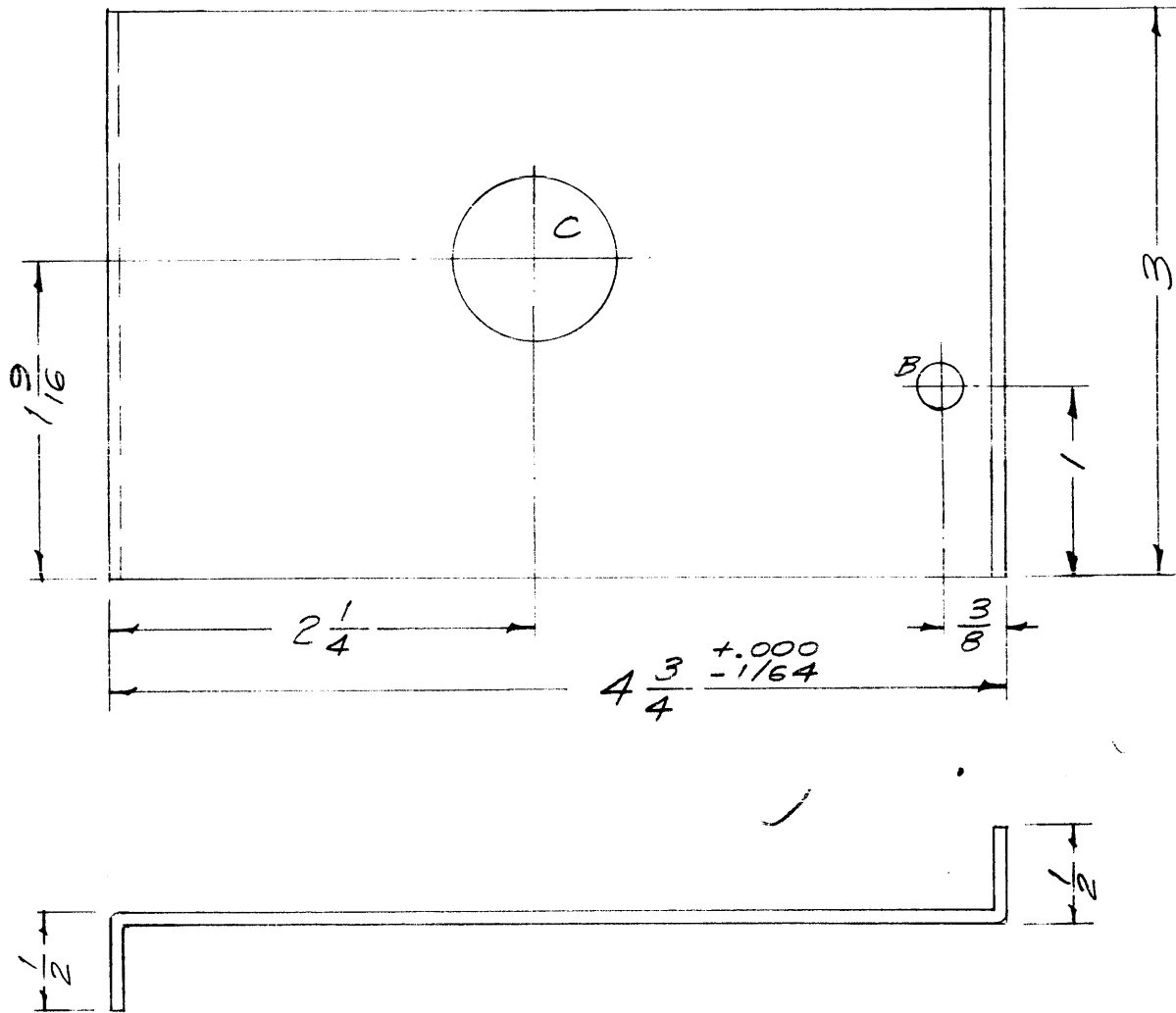
THE TECHNICAL MATERIEL CORPORATION
MAMARONECK, NEW YORK



ISSUE	ITEM	CHANGED FROM	DATE	CH. NO.	DRAFTS	CHECKER	ENG. APP.
A	1	S-404 WAS S-101	12/14/59	1001	RB		EMN
TOLERANCES			SCALE: FULL				
DEC. DIM. ±			MAXIMUM ALLOWABLE TOLERANCES HAVE BEEN DETERMINED AND ANY DEVIATIONS WILL BE CAUSE FOR REJECTION. REMOVE ALL BURRS AND SHARP EDGES				
FRAC. DIM. ± 1/64							
ANGULAR DIM. ±							

REQ. PER UNIT	MODEL	PROJECT NO.	ASS'Y. NO.	DATE
1	RFA-1	PAL-350		5-14-58
USED ON				

REQ. ITEM	PART NO.	DESCRIPTION		SYMBOL
.020 THK		THE TECHNICAL MATERIEL CORP. MAMARONECK, NEW YORK		
STOCK SIZE				
ALUMINUM		PLATE, AIR BAFFLE		
MATERIAL				
5052-H32		15/14/58	FILE	OW
TYPE & TEMPER	HEAT TREAT. SPEC.	DRAWN	CHECKED	FINAL APPROVAL
S-404 YELLOW IRIDITE		REF		MS-1254 A
FINISH & SPEC. NO.		ELEC. DES. APP.	MECH. DES. APP.	



- A - 3/16 (.187) D. 4 Req.
- B - 1/4 (.250) D. 1 Req.
- C - 7/8 (.875) D. 1 Req.

NOTICE TO PERSONS RECEIVING THIS DRAWING

THE TECHNICAL MATERIEL CORPORATION claims proprietary right in the material disclosed hereon. This drawing is issued in confidence for engineering information only and may not be reproduced or used to manufacture anything shown hereon without permission from THE TECHNICAL MATERIEL CORPORATION to the user. This drawing is loaned for mutual assistance and is subject to recall at any time.

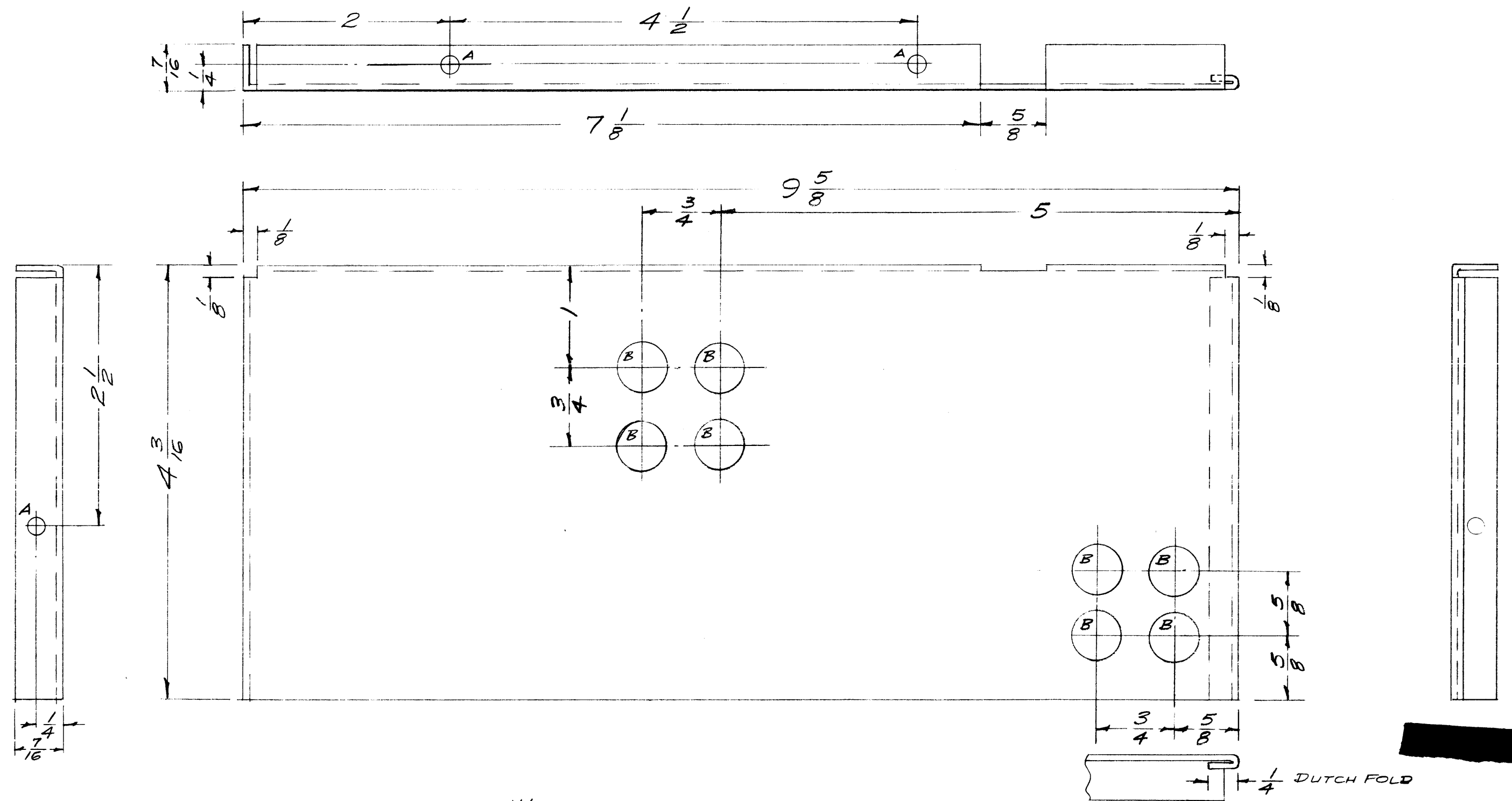
Property of:
THE TECHNICAL MATERIEL CORPORATION
MAMARONECK, NEW YORK

Ref-1 LD-428

ISSUE	ITEM	CHANGED FROM	DATE	CH. NO.	DRAFTS	CHECKER	ENG. APP.
A	1	S-404 WAS S-101	12/14/54	1001	AB		EMN
TOLERANCES			SCALE: FULL				
DEC. DIM. ±			MAXIMUM ALLOWABLE TOLERANCES HAVE BEEN DETERMINED AND ANY DEVIATIONS WILL BE CAUSE FOR REJECTION. REMOVE ALL BURRS AND SHARP EDGES				
FRAC. DIM. ± 1/64							
ANGULAR DIM. ±							

REQ. PER UNIT	MODEL	PROJECT NO.	ASS'Y. NO.	DATE
1	RFA-1	PAL-350		4-29-58
USED ON				

REQ. ITEM	PART NO.	DESCRIPTION	SYMBOL
.064 THK.		THE TECHNICAL MATERIEL CORP. MAMARONECK, NEW YORK	
STOCK SIZE			
Aluminum		SHIELD, CAPACITOR	
MATERIAL			
5052-H32	N	16 4/29/58	
TYPE & TEMPER		HEAT TREAT. SPEC.	DRAWN
S-404 YELLOW IRIDITE			CHECKED
FINISH & SPEC. NO.		ELEC. DES. APP.	MECH. DES. APP.
			MS-1255 A



A - 1/64 (.171) D. 3 Req.
 B - 1/2 (.500) D. 8 Req.

ISSUE	ITEM	CHANGED FROM	DATE	CH. NO.	DRAFTS	CHECKER	ENG. APP.
B	1	S-404 WAS S-101	12/4/54	1001	AB		EMN
A	1	B" B" Holes Added	7/1/58	904	16	<i>[Signature]</i>	<i>[Signature]</i>

TOLERANCES: DEC. DIM. ± 1/64
 FRAC. DIM. ± 1/64
 ANGULAR DIM. ±

SCALE: FULL
 MAXIMUM ALLOWABLE TOLERANCES HAVE BEEN DETERMINED AND ANY DEVIATIONS WILL BE CAUSE FOR REJECTION.
 REMOVE ALL BURRS AND SHARP EDGES

1	RFA-1	PAL 350	5-21-58
REQ. PER UNIT	MODEL	PROJECT NO.	ASS'Y. NO.
			DATE

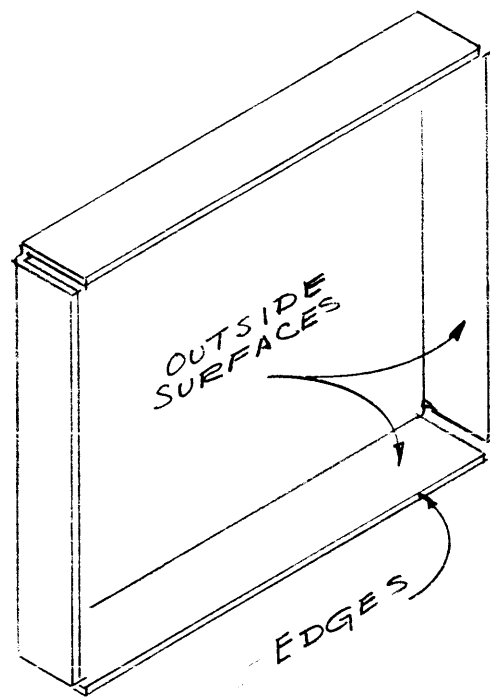
USED ON

REQ. ITEM	PART NO.	DESCRIPTION	SYMBOL
	.051 THK.	THE TECHNICAL MATERIEL CORP.	
	STOCK SIZE	MAMARONECK, NEW YORK	
	ALUMINUM	COVER, DRIVER CHASSIS	
	MATERIAL		
5052-H32		16 5/21/58	<i>[Signature]</i>
	TYPE & TEMPER	HEAT TREAT. SPEC.	DRAWN
S-404 YELLOW IRIDITE			CHECKED
	FINISH & SPEC. NO.	ELEC. DES. APP.	MECH. DES. APP.
			MS-1269 B

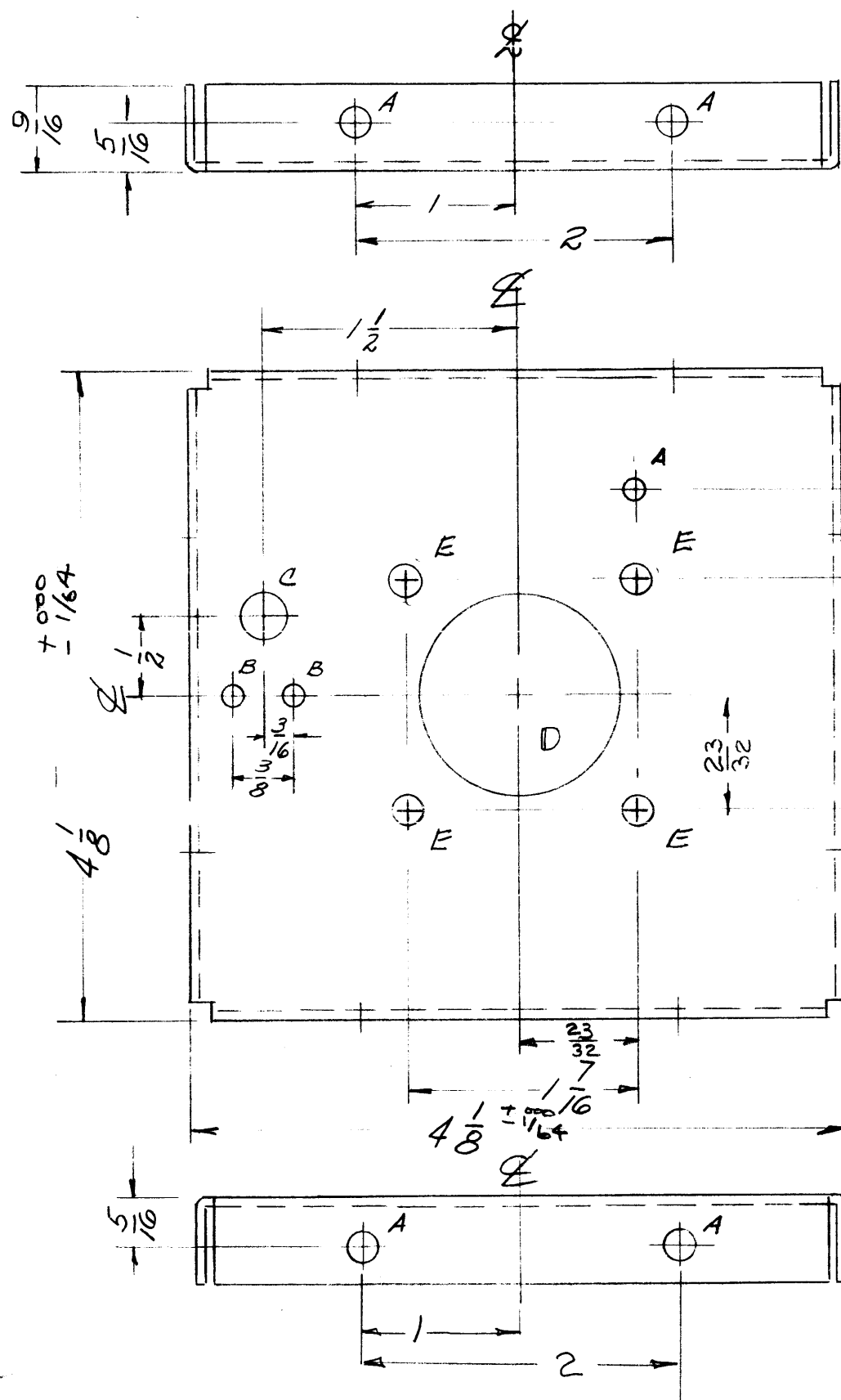
MS 1276 D

FINISH NOTE -
5404 IRIDITE
5114 ZINC CHROMATE PRIMER
5520 BLUE GRAY TEXTURED VINYL.

ALL OUTSIDE SURFACES & EDGES

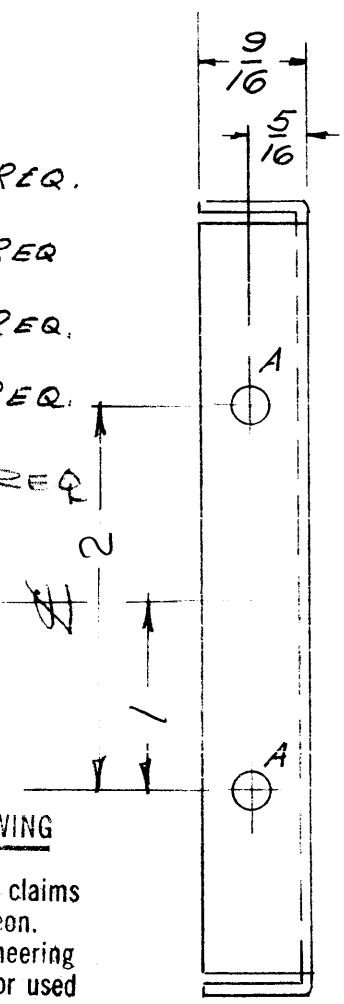


METAL STAMP TMC PART NO. 1/8 HIGH, GOTHIC, W/LATEST REVISION LETTER.



LEGEND

- A - $\frac{11}{64}$ (.171) DIA. 9 REQ.
- B - $\frac{1}{8}$ (.125) DIA. 2 REQ.
- C - $\frac{9}{32}$ (.281) DIA. 1 REQ.
- D - $\frac{9}{32}$ DIA. 1 REQ.
- E - $\frac{13}{64}$ (.203) DIA. 4 REQ.



NOTICE TO PERSONS RECEIVING THIS DRAWING

THE TECHNICAL MATERIEL CORPORATION claims proprietary right in the material disclosed hereon. This drawing is issued in confidence for engineering information only and may not be reproduced or used to manufacture anything shown hereon without permission from THE TECHNICAL MATERIEL CORPORATION to the user. This drawing is loaned for mutual assistance and is subject to recall at any time.

Property of:
THE TECHNICAL MATERIEL CORPORATION
MAMARONECK, NEW YORK

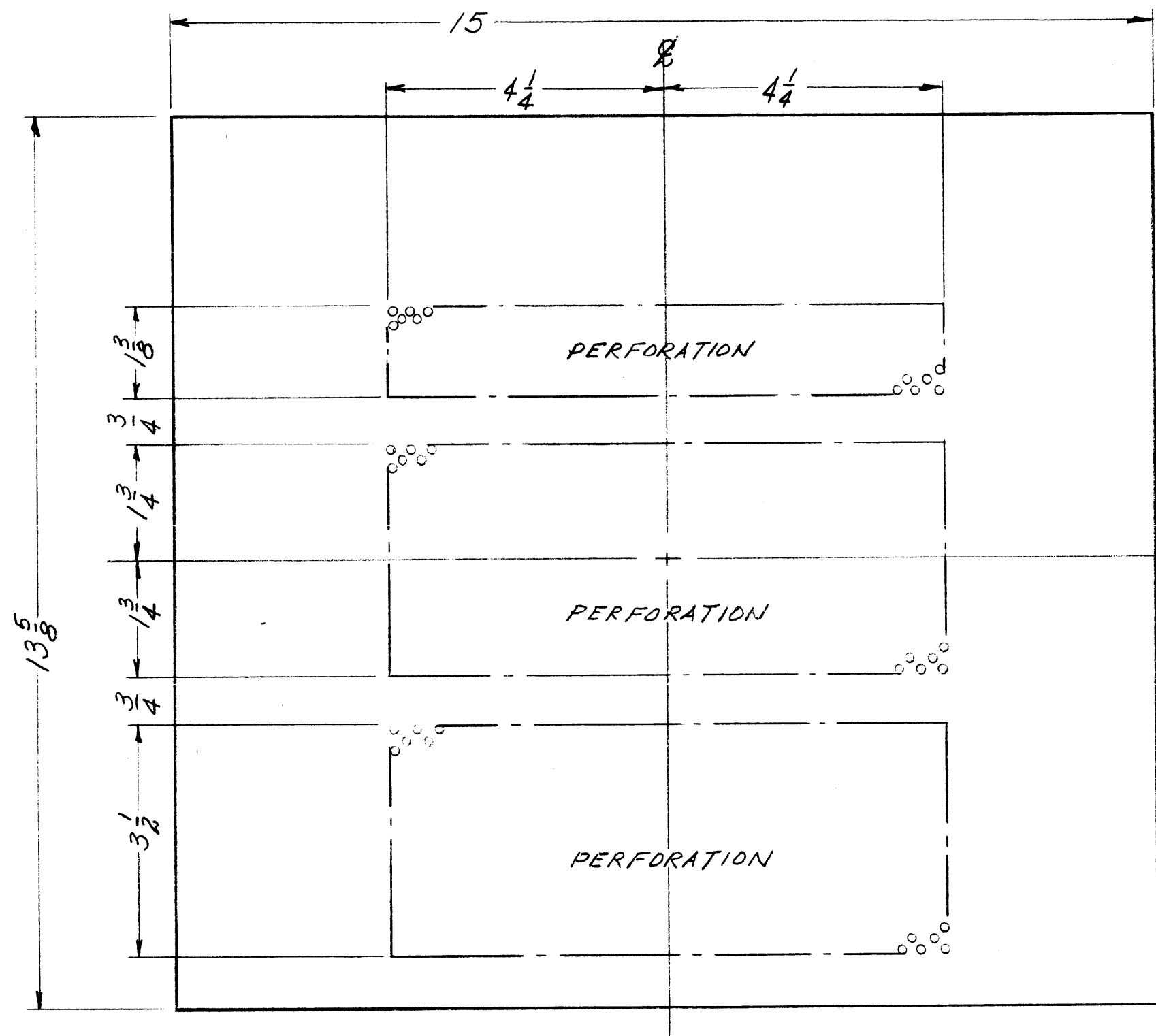
D	5220 REPLACED BY 5520 (FINISH)	12/5/65	14932	AVG	QCB	MM	
C	ON FINISH NOTE 5404 WAS S101	12-28-62	7931	AVG	AVG	AVG	
B	⊙ WAS 1-1/4 DIA.	1-10-62	6177	AVG	AVG	AVG	
A	"E" HOLES WERE 9/32 D	11/1/58	519	AVG	AVG	AVG	
ISSUE	ITEM	CHANGED FROM	DATE	CH. NO.	DRAFTS	CHECKER	ENG. APP.

TOLERANCES		SCALE:
DEC. DIM. ±		MAXIMUM ALLOWABLE TOLERANCES HAVE BEEN DETERMINED AND ANY DEVIATIONS WILL BE CAUSE FOR REJECTION. REMOVE ALL BURRS AND SHARP EDGES
FRAC. DIM. ±	1/64	
ANGULAR DIM. ±		

1	SWR-3000 CU			526-5B
REQ. PER UNIT	MODEL	PROJECT NO.	ASS'Y. NO.	DATE
USED ON				

REQ. ITEM		PART NO.	DESCRIPTION		SYMBOL
.064 THICK			THE TECHNICAL MATERIEL CORP.		
STOCK SIZE			MAMARONECK, NEW YORK		
ALUMINUM			PLATE, RIGHT SIDE		
MATERIAL			ANTENNA END		
5052-H32	CPD	7/24/58	AVG	AVG	AVG
TYPE & TEMPER	HEAT TREAT. SPEC.	DRAWN	CHECKED	FINAL APPROVAL	
CPD		AVG	AVG	MS 1276 D	
FINISH & SPEC. NO.		ELEC. DES. APP.		MECH. DES. APP.	

MS-1278



PERFORATION:
 .072 DIAM. HOLES ON 1/8 CENTERS

NOTICE TO PERSONS RECEIVING THIS DRAWING
 THE TECHNICAL MATERIEL CORPORATION claims proprietary right in the material disclosed hereon. This drawing is issued in confidence for engineering information only and may not be reproduced or used to manufacture anything shown hereon without permission from THE TECHNICAL MATERIEL CORPORATION to the user. This drawing is loaned for mutual assistance and is subject to recall at any time.
 Property of:
 THE TECHNICAL MATERIEL CORPORATION
 MAMARONECK, NEW YORK

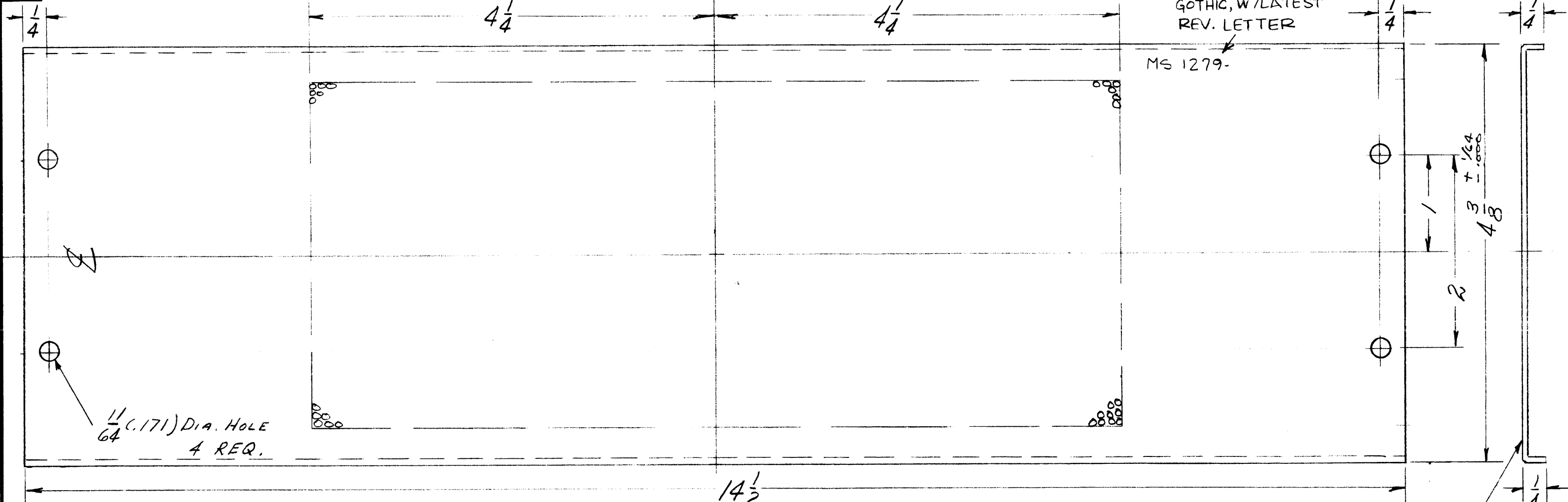
REF-MS-1277

ISSUE	ITEM	CHANGED FROM	DATE	CH. NO.	DRAFTS	CHECKER	ENG. APP.
TOLERANCES		SCALE: 1/2					
DEC. DIM. ±		MAXIMUM ALLOWABLE TOLERANCES HAVE BEEN DETERMINED AND ANY DEVIATIONS WILL BE CAUSE FOR REJECTION. REMOVE ALL BURRS AND SHARP EDGES					
FRAC. DIM. ± 1/64							
ANGULAR DIM. ±							

REQ. PER UNIT	MODEL	PROJECT NO.	ASS'Y. NO.	DATE
	SWR-3000 CU			
USED ON				

REQ. ITEM	PART NO.	DESCRIPTION	SYMBOL
	.064 THICK	THE TECHNICAL MATERIEL CORP. MAMARONECK, NEW YORK	
	STOCK SIZE		
	ALUMINUM	BLANK SIZE, WRAPAROUND	
		MODEL SWR-3000 CU	
5052-H32	✓	5/23/52	JAS
TYPE & TEMPER	HEAT TREAT. SPEC.	DRAWN	CHECKED
		✓	✓
FINISH & SPEC. NO.	ELEC. DES. APP.	MECH. DES. APP.	MS-1278

MS 1279



METAL STAMP TMC
PART NO. 1/8 HIGH,
GOTHIC, W/LATEST
REV. LETTER

MS 1279-

11/64 (.171) DIA. HOLE
4 REQ.

FINISH NOTE -
5404 YELLOW IRIDITE
5114 ZINC CHROMATE PRIMER
5520 BLUEGRAY TEXTURED VINYL. } ALL
OUTSIDE SURFACES

OUTSIDE SURFACE -
SEE FINISH NOTE

USE: MS-1280 REF: MS-1277

ISSUE	ITEM	CHANGED FROM	DATE	CH. NO.	DRAFTS	CHECKER	ENG. APP.
B		5220 REPLACED BY 5520 (FINISH)	10/5/65	14932	P.V.	JCS	MM
A	1	FINISH, S404 YEL IRIDITE WAS S-101 CAUSTIC DIP.	2-19-63	8280			

TOLERANCES: SCALE: FULL

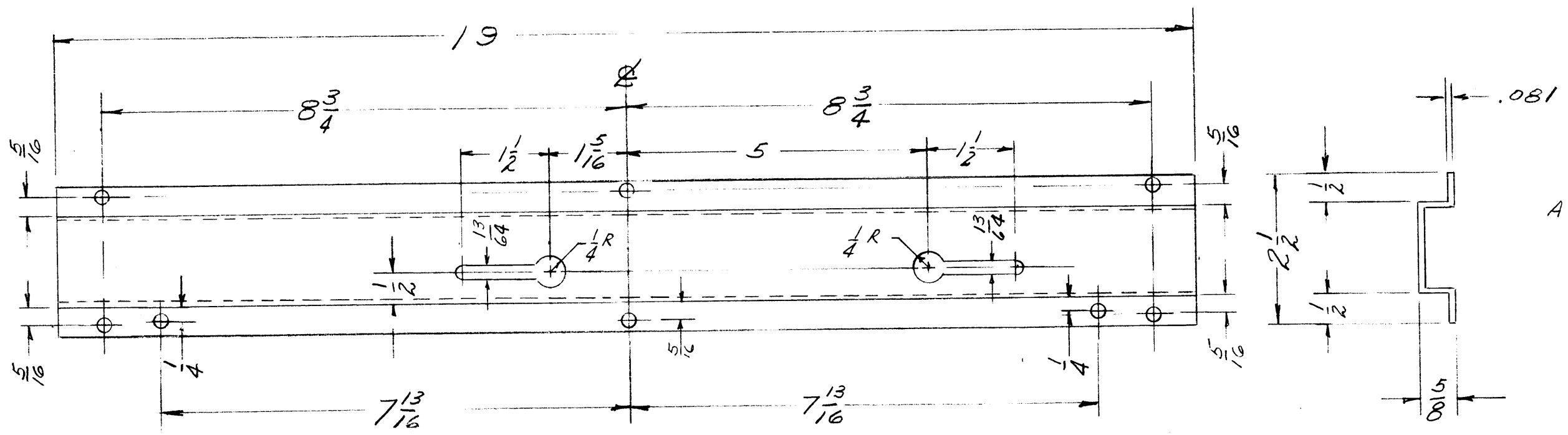
DEC. DIM. ±
FRAC. DIM. ±
ANGULAR DIM. ±

MAXIMUM ALLOWABLE TOLERANCES HAVE BEEN DETERMINED AND ANY DEVIATIONS WILL BE CAUSE FOR REJECTION.
REMOVE ALL BURRS AND SHARP EDGES

1	SWR-3000CU			5-23-58
REQ. PER UNIT	MODEL	PROJECT NO.	ASS'Y. NO.	DATE
USED ON				

REQ. ITEM	PART NO.	DESCRIPTION	SYMBOL
.064 THICK		THE TECHNICAL MATERIEL CORP.	
STOCK SIZE		MAMARONECK, NEW YORK	
ALUMINUM		COVER	
MATERIAL			
5052-H32	CP	5-23-58 RSC	JCS
TYPE & TEMPER	HEAT TREAT. SPEC.	DRAWN	CHECKED
CP		MM	JCS
FINISH & SPEC. NO.		ELEC. DES. APP.	MECH. DES. APP.
		MS 1279	B

MS-1288 A



HOLE LEGEND
 A - $\frac{13}{64}$ (.203) DIA - 8 REQ.

NOTICE TO PERSONS RECEIVING THIS DRAWING

THE TECHNICAL MATERIEL CORPORATION claims proprietary right in the material disclosed hereon. This drawing is issued in confidence for engineering information only and may not be reproduced or used to manufacture anything shown hereon without permission from THE TECHNICAL MATERIEL CORPORATION to the user. This drawing is loaned for mutual assistance and is subject to recall at any time.

Property of:
THE TECHNICAL MATERIEL CORPORATION
 MAMARONECK, NEW YORK

ISSUE	ITEM	CHANGED FROM	DATE	CH. NO.	DRAFTS	CHECKER	ENG. APP.
A	1	S-404 WAS S-101	12/14/54	1001	AE		EMN

TOLERANCES: DEC. DIM. \pm , FRAC. DIM. $\pm \frac{1}{64}$, ANGULAR DIM. \pm

SCALE: MAXIMUM ALLOWABLE TOLERANCES HAVE BEEN DETERMINED AND ANY DEVIATIONS WILL BE CAUSE FOR REJECTION. REMOVE ALL BURRS AND SHARP EDGES

REQ. PER UNIT	MODEL	PROJECT NO.	ASS'Y. NO.	DATE
1	MSR-4		A-1555	6-19-58
1	MSR-3		A-1555	6-19-58
1	MSR-1		A-1555	6-19-58
USED ON				

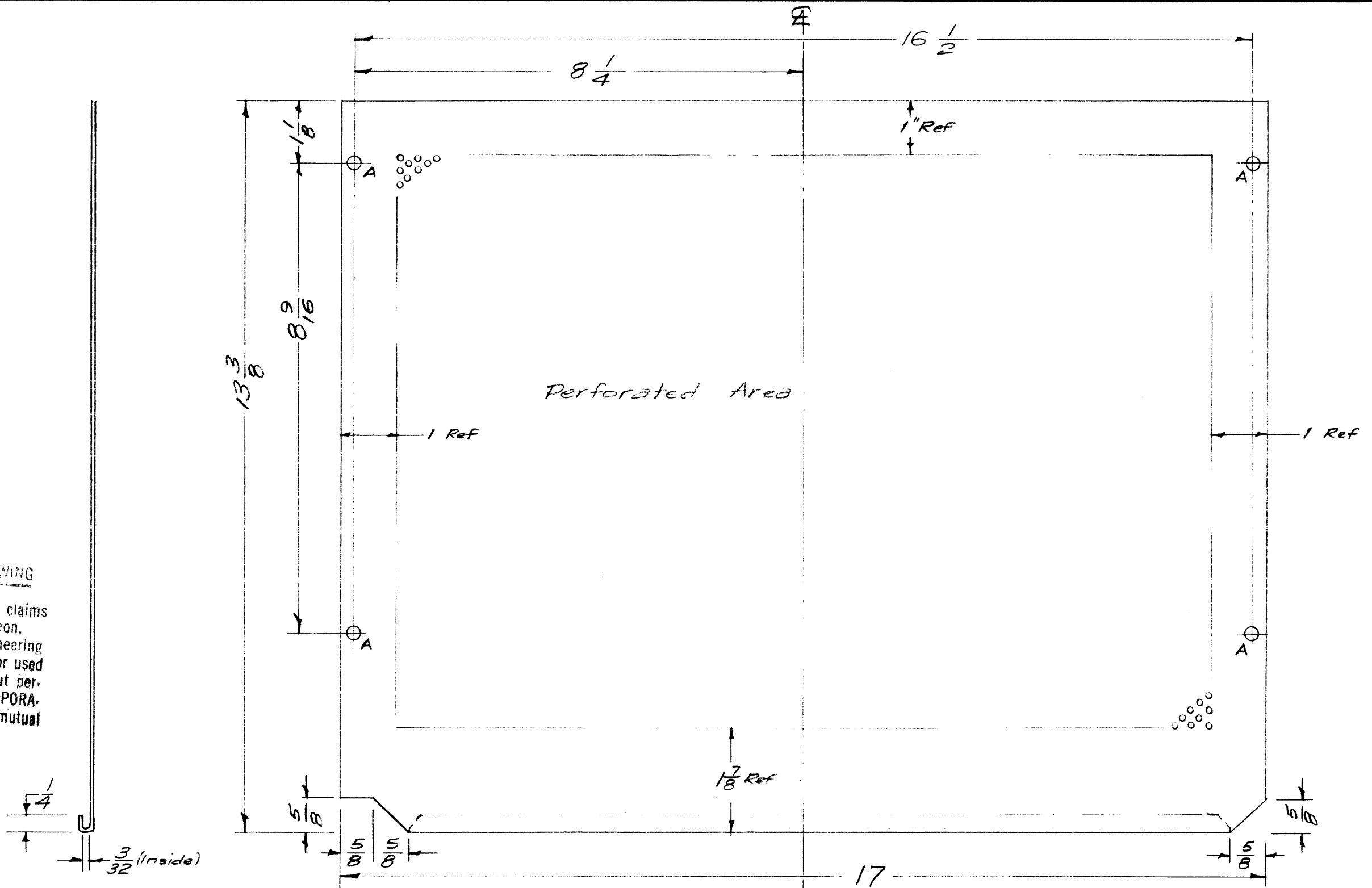
REQ. ITEM	PART NO.	DESCRIPTION	SYMBOL
.081 THICK STOCK SIZE		THE TECHNICAL MATERIEL CORP. MAMARONECK, NEW YORK	
ALUMINUM MATERIAL		SUPPORT, CHASSIS	
		MODEL MSR	
5052-H32		6-19-58	
TYPE & TEMPER	HEAT TREAT. SPEC.	DRAWN	CHECKED
S-404 YELLOW IRIDITE			
FINISH & SPEC. NO.		ELEC. DES. APP.	MECH. DES. APP.
		MS-1288 A	

A-1/4(.250)D. 4 Req.

NOTICE TO PERSONS RECEIVING THIS DRAWING

THE TECHNICAL MATERIEL CORPORATION claims proprietary right in the material disclosed hereon. This drawing is issued in confidence for engineering information only and may not be reproduced or used to manufacture anything shown hereon without permission from THE TECHNICAL MATERIEL CORPORATION to the user. This drawing is loaned for mutual assistance and is subject to recall at any time.

Property of:
THE TECHNICAL MATERIEL CORPORATION
MAMARONECK, NEW YORK



NO LONGER USED ON INSR 3, 4
USE MS-1327

Ref-(1) MS-1292

ISSUE	ITEM	CHANGED FROM	DATE	CH. NO.	DRAFTS	CHECKER	ENG. APP.
A	1	S-404 WAS S-101	12/1/59	1001	AR		EMN
TOLERANCES			SCALE: 1/2				
DEC. DIM. ±			MAXIMUM ALLOWABLE TOLERANCES HAVE BEEN DETERMINED AND ANY DEVIATIONS WILL BE CAUSE FOR REJECTION.				
FRAC. DIM. ± 1/64			REMOVE ALL BURRS AND SHARP EDGES				
ANGULAR DIM. ±							

REQ. ITEM	PART NO.	DESCRIPTION	SYMBOL
	.051 THK	THE TECHNICAL MATERIEL CORP. MAMARONECK, NEW YORK	
	STOCK SIZE		
	ALUMINUM	COVER, BOTTOM	
	MATERIAL		
	6052-H32	16 7/25/58	
	TYPE & TEMPER	DRAWN	CHECKED
	HEAT TREAT. SPEC.		FINAL APPROVAL
	S-404 YELLOW IRIDITE		MS-1293
	FINISH & SPEC. N	ELEC. DES. APP.	MECH. DES. APP.

REQ. PER UNIT	MODEL	PROJECT NO.	ASS'Y. NO.	DATE

USED ON

NOTED TO PERSONS RECEIVING THIS DRAWING
 THE TECHNICAL MATERIEL CORPORATION claims proprietary right in the material disclosed hereon. This drawing is issued in confidence for engineering information only and may not be reproduced or used to manufacture anything shown hereon without permission from THE TECHNICAL MATERIEL CORPORATION to the user. This drawing is loaned for mutual assistance and is subject to recall at any time.

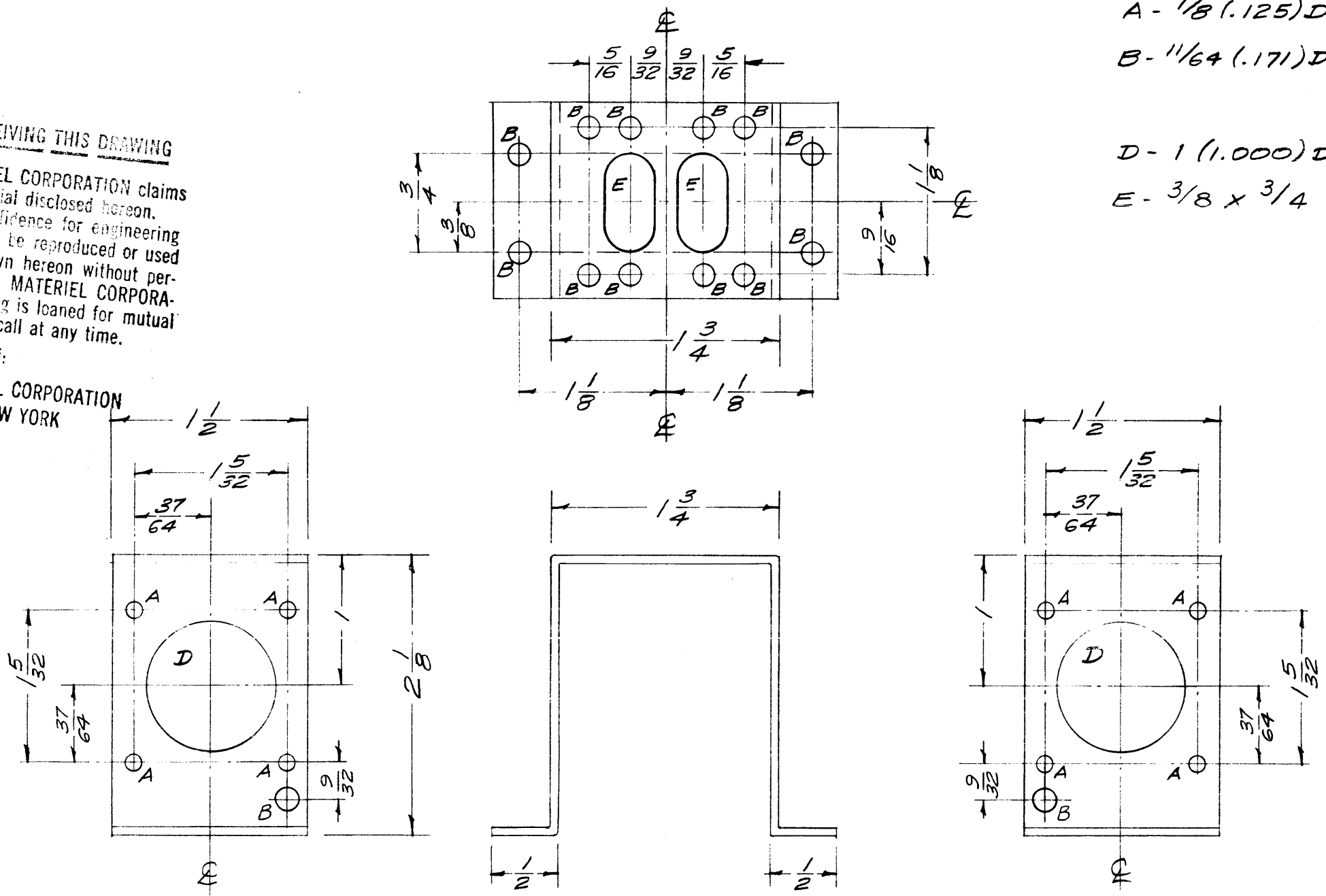
Property of:
 THE TECHNICAL MATERIEL CORPORATION
 MAMARONECK, NEW YORK

A - 1/8 (.125) D. 8 Req.

B - 1/64 (.171) D. 14 Req.

D - 1 (1.000) D. 2 Req.

E - 3/8 x 3/4 SLOT 2 Req.



ISSUE	ITEM	CHANGED FROM	DATE	CH. NO.	DRAFTS	CHECKER	ENG. APP.
B	1	S-404 WAS S-101	12/14/59	1001	AR		EMN
A	2	C holes changed to B holes	2/19/59	793	JCB.		
	1	3/8 x 3/4 SLOT WAS 5/16 x 11/16					

TOLERANCES: DEC. DIM. ±, FRAC. DIM. ± 1/64, ANGULAR DIM. ±

SCALE: FULL

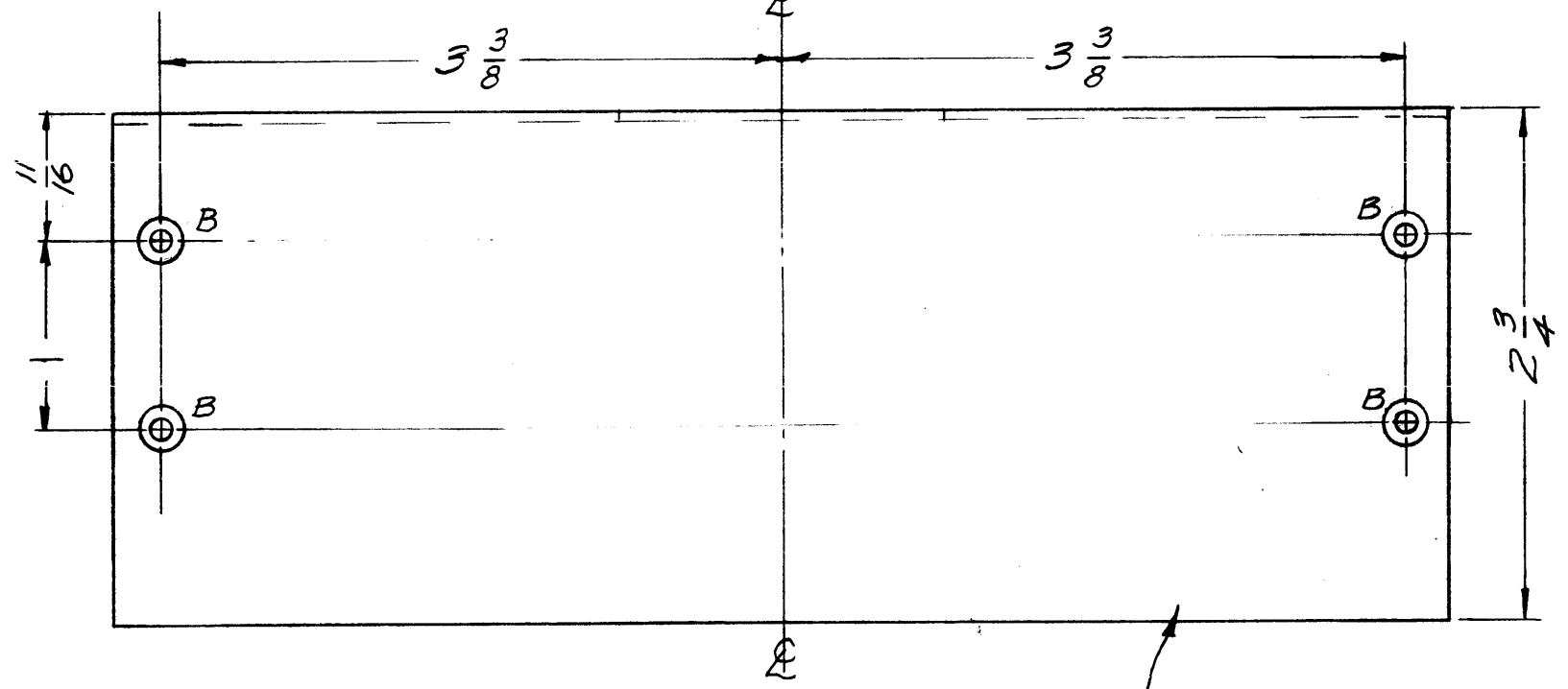
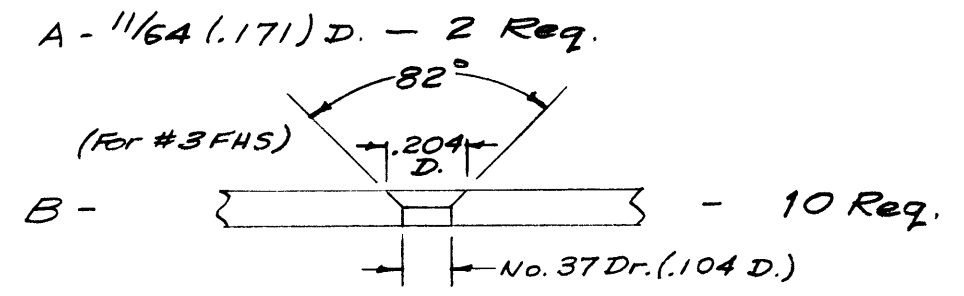
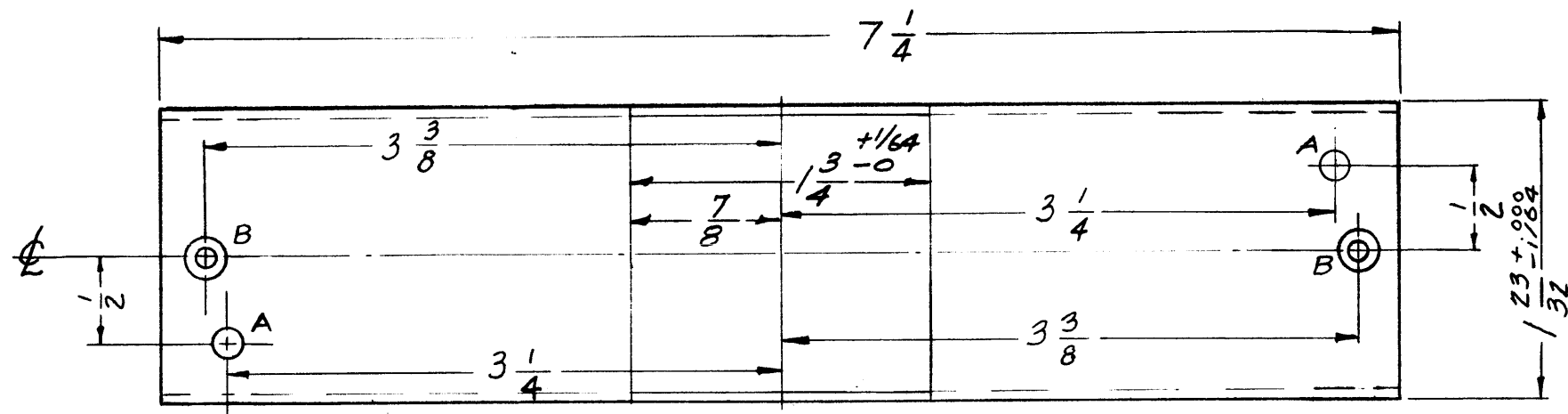
MAXIMUM ALLOWABLE TOLERANCES HAVE BEEN DETERMINED AND ANY DEVIATIONS WILL BE CAUSE FOR REJECTION. REMOVE ALL BURRS AND SHARP EDGES

REQ. PER UNIT	MODEL	PROJECT NO.	ASS'Y. NO.	DATE
1	A-1532/PVC			7-28-58

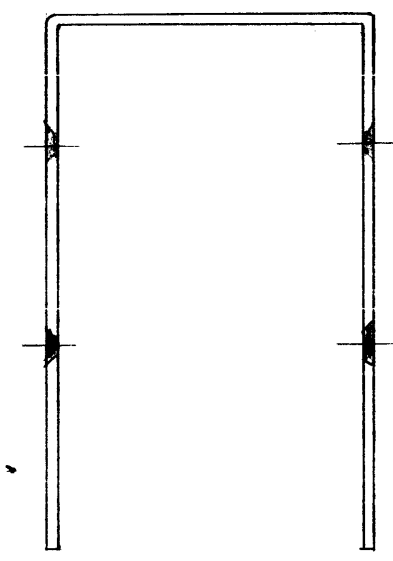
USED ON

REQ. ITEM	PART NO.	DESCRIPTION	SYMBOL
	.001 THK.	THE TECHNICAL MATERIEL CORP. MAMARONECK, NEW YORK	
	ALUMINUM	BRACKET, TRANSFORMER MTG.	
5052-H32		16 7/28/58	
S-404 YELLOW IRIDITE		DRAWN	CHECKED
			FINAL APPROVAL
			MS-1295 B

MS-1297 D



Same Drilling - Opposite side



NOTICE TO PERSONS RECEIVING THIS DRAWING
 THE TECHNICAL MATERIEL CORPORATION claims proprietary right in the material disclosed herein. This drawing is issued in confidence for engineering information only and may not be re-reduced or used to manufacture anything shown hereon without permission from THE TECHNICAL MATERIEL CORPORATION to the user. This drawing is loaned for mutual assistance and is subject to recall at any time.
 Property of:
 THE TECHNICAL MATERIEL CORPORATION
 MAMARONECK, NEW YORK.

D	2	1" DIM ADDED (LEFT SIDE)	7-12-62	6896	CP		
	1	1-1/16" DIM DELETED					
C	1	S-404 WAS S-101	12/14/59	1001	AB		EMN
B		B' HOLES RELOCATED 7 1/4 WAS 7 3/16	10-15-58		J.C.B.		
A	2	DIMENS. 7 3/16 WAS 6 15/16	8/11/58	421			
	1	THICKNESS WAS .051					
ISSUE	ITEM	CHANGED FROM	DATE	CH. NO.	DRAFTS	CHECKER	ENG. APP.
TOLERANCES			SCALE: FULL				
DEC. DIM. ±			MAXIMUM ALLOWABLE TOLERANCES HAVE BEEN DETERMINED AND ANY DEVIATIONS WILL BE CAUSE FOR REJECTION. REMOVE ALL BURRS AND SHARP EDGES				
FRAC. DIM. ± 1/64							
AN ULAR DIM. ±							
1	A-1532/PVC						7-28-58
REQ. PER UNIT	MODEL	PROJECT NO.	ASS'Y. NO.	DATE			
USED ON							

Ref: (1) LD-441

REQ. ITEM	PART NO.	DESCRIPTION	SYMBOL
	.040 THK.	THE TECHNICAL MATERIEL CORP. MAMARONECK, NEW YORK	
	STOCK SIZE		
	Aluminum	COVER	
MATERIAL			
5052H32		16 7/28/58	
TYPE & TEMPER	HEAT TREAT. SPEC.	DRAWN	CHECKED
S-404 YELLOW IRIDITE			
FINISH & SPEC. NO.	ELEC. DES. APP.	MECH. DES. APP.	
			MS-1297 D