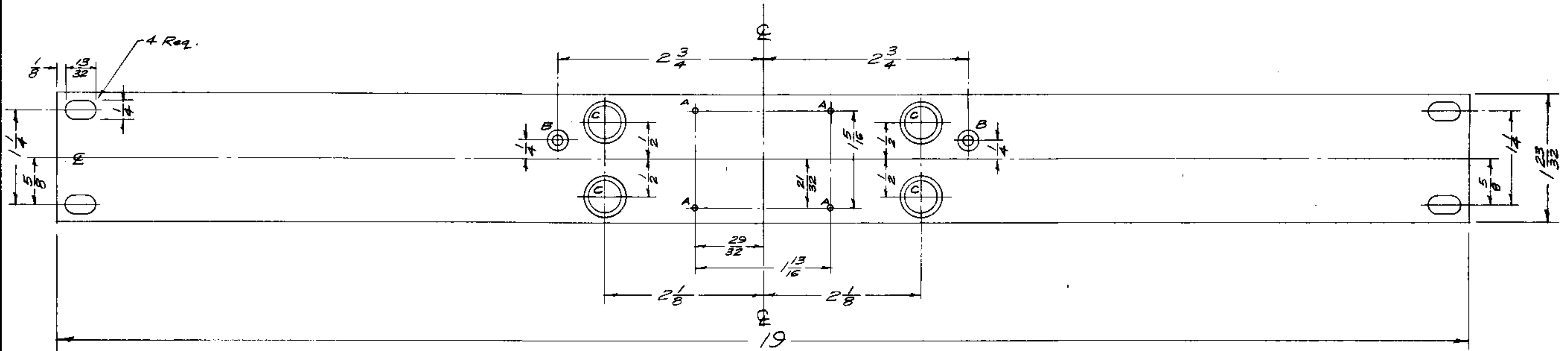


IF IT IS FOUND DESIRABLE TO CHANGE ANY TOLERANCE OR OTHER DETAIL SPECIFIED ON THIS DRAWING NOTIFY THE PURCHASER PROMPTLY.

MAXIMUM ALLOWABLE TOLERANCES HAVE BEEN DETERMINED AND DEVIATIONS WILL BE CAUSE FOR REJECTION. REMOVE ALL BURRS AND SHARP EDGES

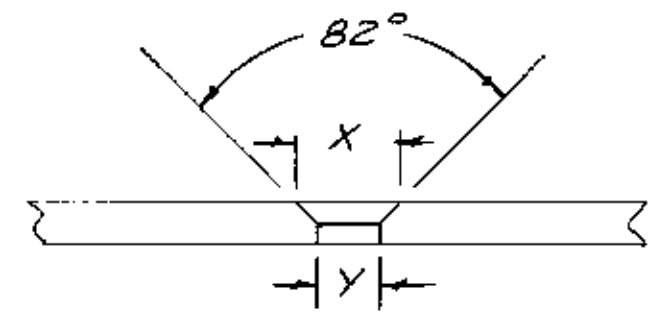


FRONT VIEW

MS-1298 A

- A- No. 47 Dr. (.0785) 4 Req.
- B- See Chart & Detail Below 2 Req.
- C- See Chart & Detail Below 4 Req.

FINISH NOTE:  
 S404 YEL- IRIDITE  
 S114 Zinc Chromate Primer } Front & Edges Only.  
 S115 Smooth Gray Enamel



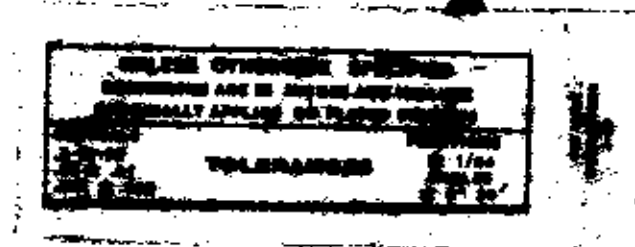
DETAIL	DIM. X	DIM. Y
B	.284	.124
C	.5625	.4375

#6 FHS

NOTICE TO PERSONS RECEIVING THIS DRAWING

THE TECHNICAL MATERIEL CORPORATION claims proprietary right in the material disclosed hereon. This drawing is issued in confidence for engineering information only and may not be reproduced or used to manufacture anything shown hereon without permission from THE TECHNICAL MATERIEL CORPORATION to the user. This drawing is loaned for mutual assistance and is subject to recall at any time.

Property of:  
 THE TECHNICAL MATERIEL CORPORATION  
 MAMARONECK, NEW YORK



Ref-(4)LD-43B

REQ. ITEM	PART NO.	DESCRIPTION	SYMBOL
	3/16 THK.	THE TECHNICAL MATERIEL CORP. MAMARONECK, NEW YORK	
	Aluminum	PANEL, FRONT	
	2024-T3	PVC-1	
	TYPE & TEMPER	16 7/28/58	
	HEAT TREAT. SPEC.	See Note	
		CHECKED	FINAL APPROV.
			MS-1298 A

ISSUE	ITEM	CHANGED FROM	DATE	GN. NO.	DRAFTS	CHECKER	ENG. APP.
A	1	S404-IRIDITE WAS 3101-CAUSTIC D.P.	12-9-58	JODI	P		EMN

TOLERANCES		SCALE: FULL
ALL OTHERS	DEC. DIM. ± 1/64 FRAC. DIM. ± 1/64 ANGULAR DIM. ±	DRILL, PUNCH, COMMERCIAL STOCK SIZES AND MANUFACTURERS TOLERANCES ARE NOT INCLUDED.

REQ PER UNIT	MODEL	PROJECT NO.	ASBY. NO.	DATE
1	PVC-1			7-28-58