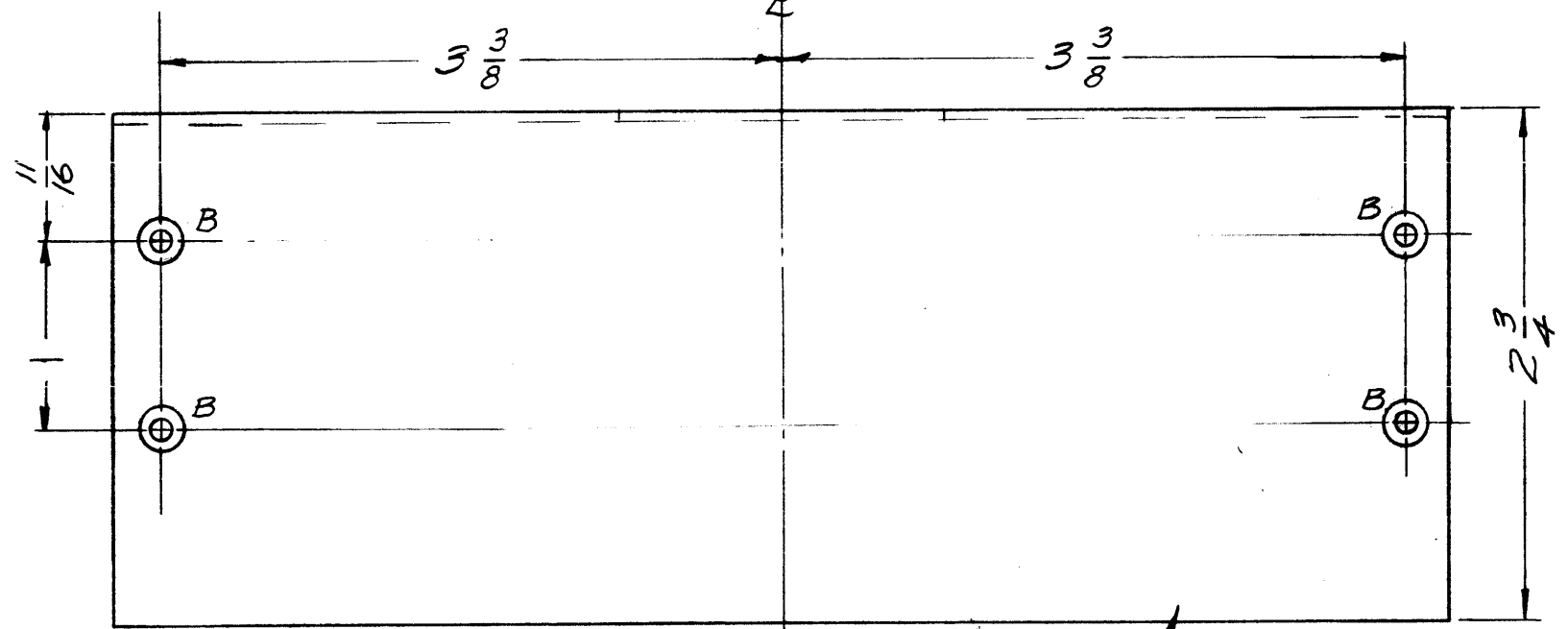
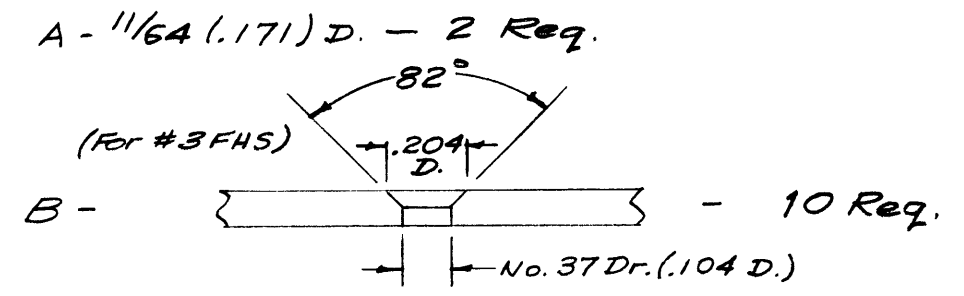
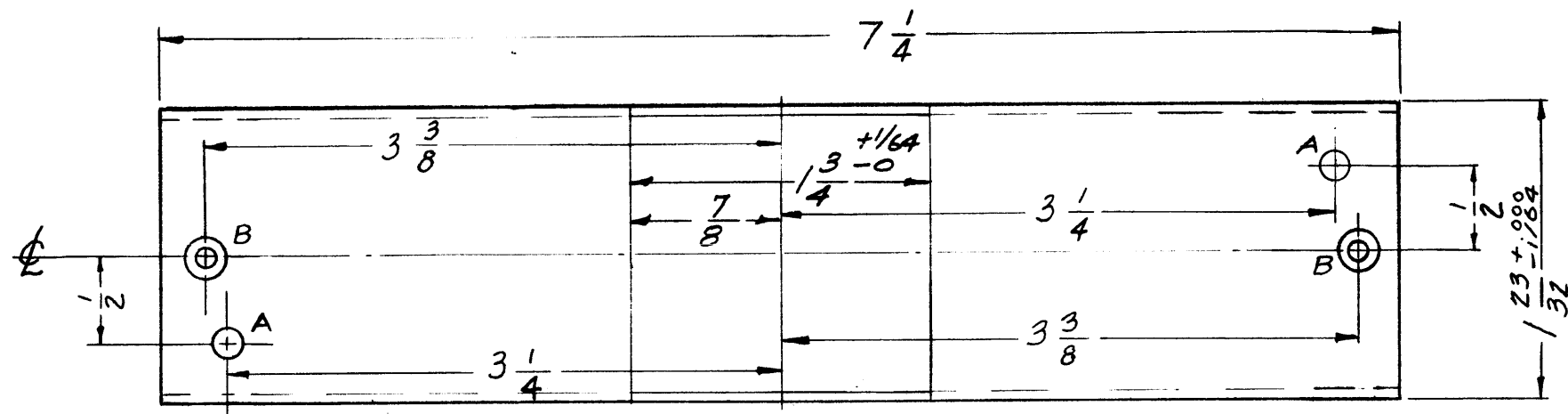
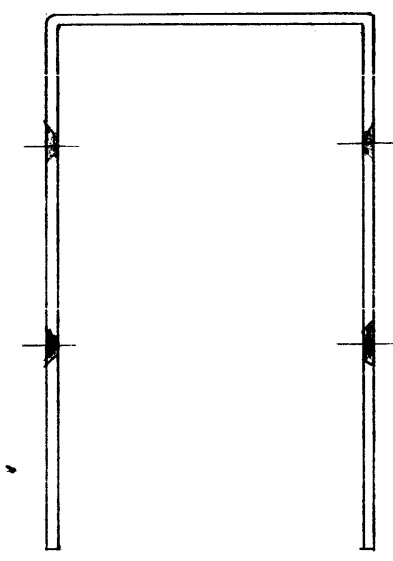


MS-1297 D



Same Drilling - Opposite side



NOTICE TO PERSONS RECEIVING THIS DRAWING
 THE TECHNICAL MATERIEL CORPORATION claims proprietary right in the material disclosed herein. This drawing is issued in confidence for engineering information only and may not be re-reduced or used to manufacture anything shown hereon without permission from THE TECHNICAL MATERIEL CORPORATION to the user. This drawing is loaned for mutual assistance and is subject to recall at any time.
 Property of:
 THE TECHNICAL MATERIEL CORPORATION
 MAMARONECK, NEW YORK.

D	2	1" DIM ADDED (LEFT SIDE)	7-12-62	6896	CP		
	1	1-1/16" DIM DELETED					
C	1	S-404 WAS S-101	12/14/59	1001	AB		EMN
B		B HOLES RELOCATED 7 1/4 WAS 7 3/16	10-15-58		J.C.B.		
A	2	DIMENS. 7 3/16 WAS 6 15/16	8/11/58	421			
	1	THICKNESS WAS .051					
ISSUE	ITEM	CHANGED FROM	DATE	CH. NO.	DRAFTS	CHECKER	ENG. APP.
TOLERANCES			SCALE: FULL				
DEC. DIM. ±			MAXIMUM ALLOWABLE TOLERANCES HAVE BEEN DETERMINED AND ANY DEVIATIONS WILL BE CAUSE FOR REJECTION. REMOVE ALL BURRS AND SHARP EDGES				
FRAC. DIM. ± 1/64							
AN ULAR DIM. ±							

1	A-1532/PVC			7-28-58
REQ. PER UNIT	MODEL	PROJECT NO.	ASS'Y. NO.	DATE
USED ON				

Ref: (1) LD-441

REQ. ITEM	PART NO.	DESCRIPTION	SYMBOL
	.040 THK.	THE TECHNICAL MATERIEL CORP. MAMARONECK, NEW YORK	
	STOCK SIZE		
	Aluminum	COVER	
	MATERIAL		
5052H32		16 7/28/58	
TYPE & TEMPER	HEAT TREAT. SPEC.	DRAWN	CHECKED
S-404 YELLOW IRIDITE		RPM	
FINISH & SPEC. NO.		ELEC. DES. APP.	MECH. DES. APP.
			MS-1297 D