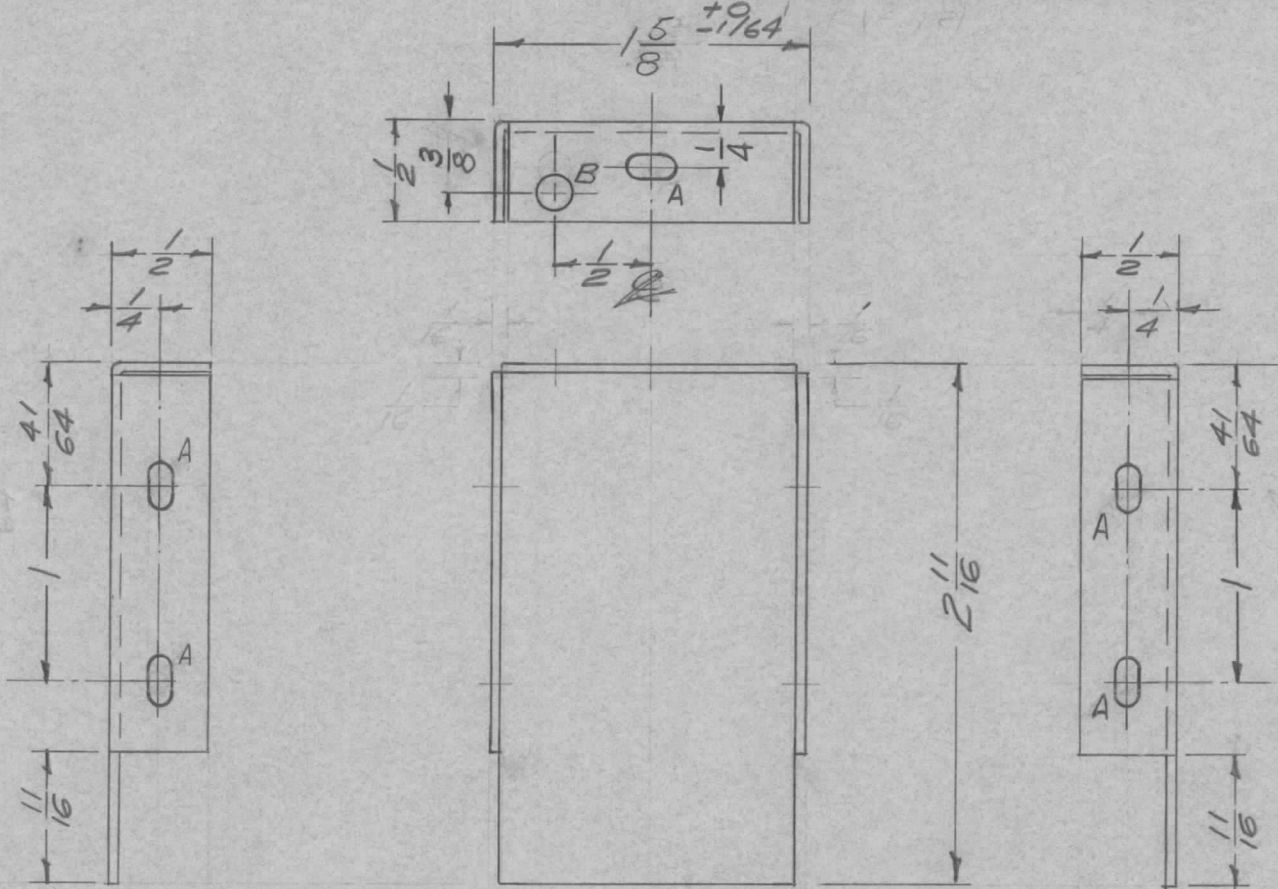


REQ. PER UNIT	USED ON			MS-1296	D
	MODEL	ASSY. NO.	DATE		
2	A-1532/PVC		7-28-58		



A -  $\frac{1}{8} \times \frac{1}{4}$  slots 5 Req.  
 B -  $\frac{11}{64}$  (.171) D. 1 Req.

USE MATERIAL THICKNESS FOR MAX. RADIUS ON ALL BENDS UNLESS OTHERWISE SPECIFIED

ISSUE	ITEM	CHANGED FROM	DATE	CH. NO.	DRAFTS	CHECKER	ENG. APP.	REQ. ITEM	PART NO.	DESCRIPTION	SYMBOL		
D	2	1-5/8" DIN WAS 1-19/32	7-12-62	6896	ef	<del>ef</del>	<del>ef</del>						
	1	1/16" NOTCHES DELETED											
C	1	5404-YEL-IRIDITE S/D CAUSTIC DIP	12-59	1001	P		EMN						
B	1	"A" holes were 7/64 DIA	2-19-59	794	J.C.B.	file	ah						
A	1	"B" HOLE RELOCATED	10-17-58		J.C.B.	file	ah						
TOLERANCES								SCALE: FULL					
DEC. DIM. ±								MAXIMUM ALLOWABLE TOLERANCES HAVE BEEN DETERMINED AND ANY DEVIATIONS WILL BE CAUSE FOR REJECTION.					
FRAC. DIM. ± 1/64								REMOVE ALL BURRS AND SHARP EDGES					
ANGULAR DIM. ±													
								5052-H32		16 7/28/58		file	
								5404 YEL-IRIDITE		RPM		ah	
								FINISH & SPEC. NO.		ELEC. DES. APP.		MECH. DES. APP.	
										MS-1296		D	

THE TECHNICAL MATERIEL CORP.  
 MAMARONECK, NEW YORK

PLATE, SIDE

MS-1296 D