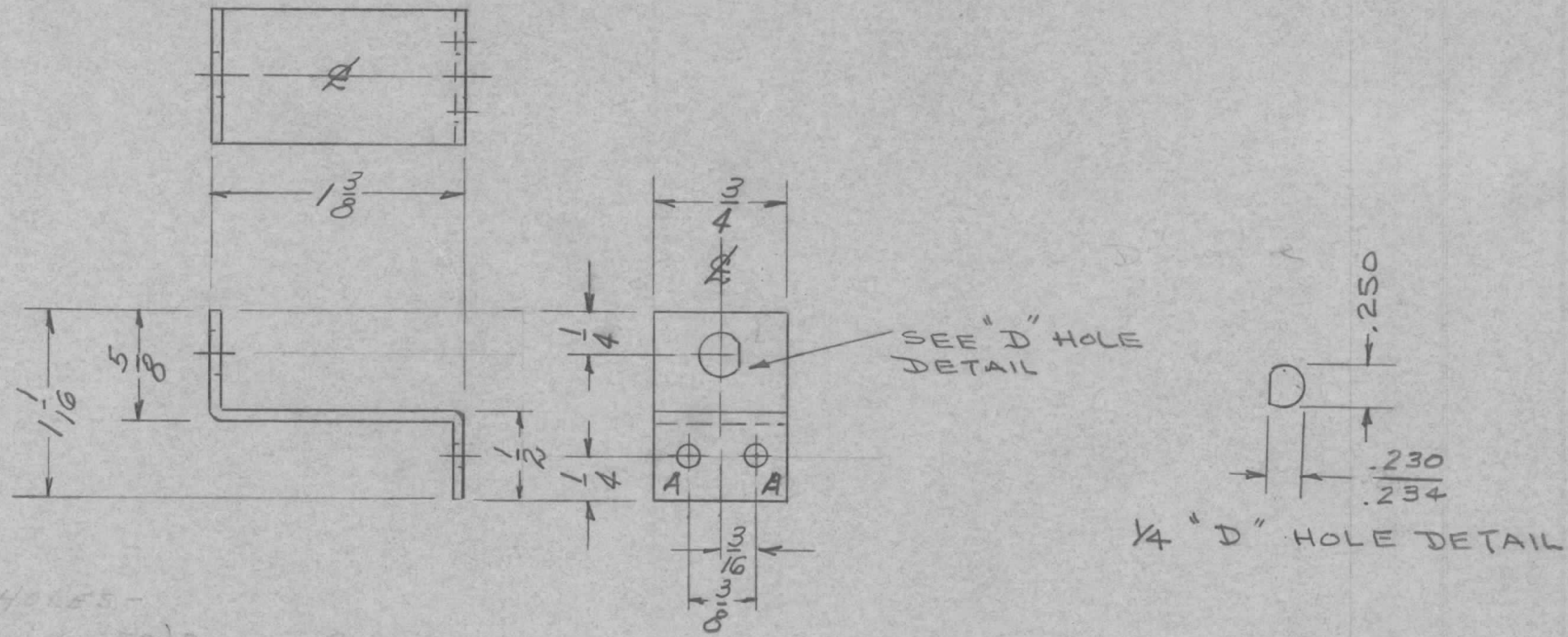


REQ. PER UNIT	USED ON			MS-1273	B
	MODEL	ASS'Y. NO.	DATE		
1	SWR-3000 _{CV}	A-1547	5/27/58		
1	SWR-3000 CV	A-1548			



HOLE 5 -
 A - $\frac{1}{8}$ (.125) DIA - 2 REQ.

REQ.	ITEM	PART NO.	DESCRIPTION				SYMBOL
		.064 THICK	THE TECHNICAL MATERIEL CORP.				
		STOCK SIZE	MAMARONECK, NEW YORK				
		ALUMINUM	BRACKET				
		MATERIAL					
B	1	.230/.234 WAS 210	11-30-65	15294	X.V.	JCB	EMN
A	1	S404-Y-IRIDITE WAS S101-CAUSTIC DIP	12-8-59	1001	P		
ISSUE	ITEM	CHANGED FROM	DATE	CH. NO.	DRAFTS	CHECKER	ENG. APP.
TOLERANCES			SCALE:				
DEC. DIM. \pm			MAXIMUM ALLOWABLE TOLERANCES HAVE BEEN DETERMINED AND ANY DEVIATIONS WILL BE CAUSE FOR REJECTION.				
FRAC. DIM. \pm 1/64			REMOVE ALL BURRS AND SHARP EDGES				
ANGULAR DIM. \pm							
5052-H32		CP	DATE	5/27/58	DRAWN	CHECKED	FINAL APPROVAL
S404-YEL IRIDITE			ELEC. DES. APP.		MECH. DES. APP.		MS-1273 B