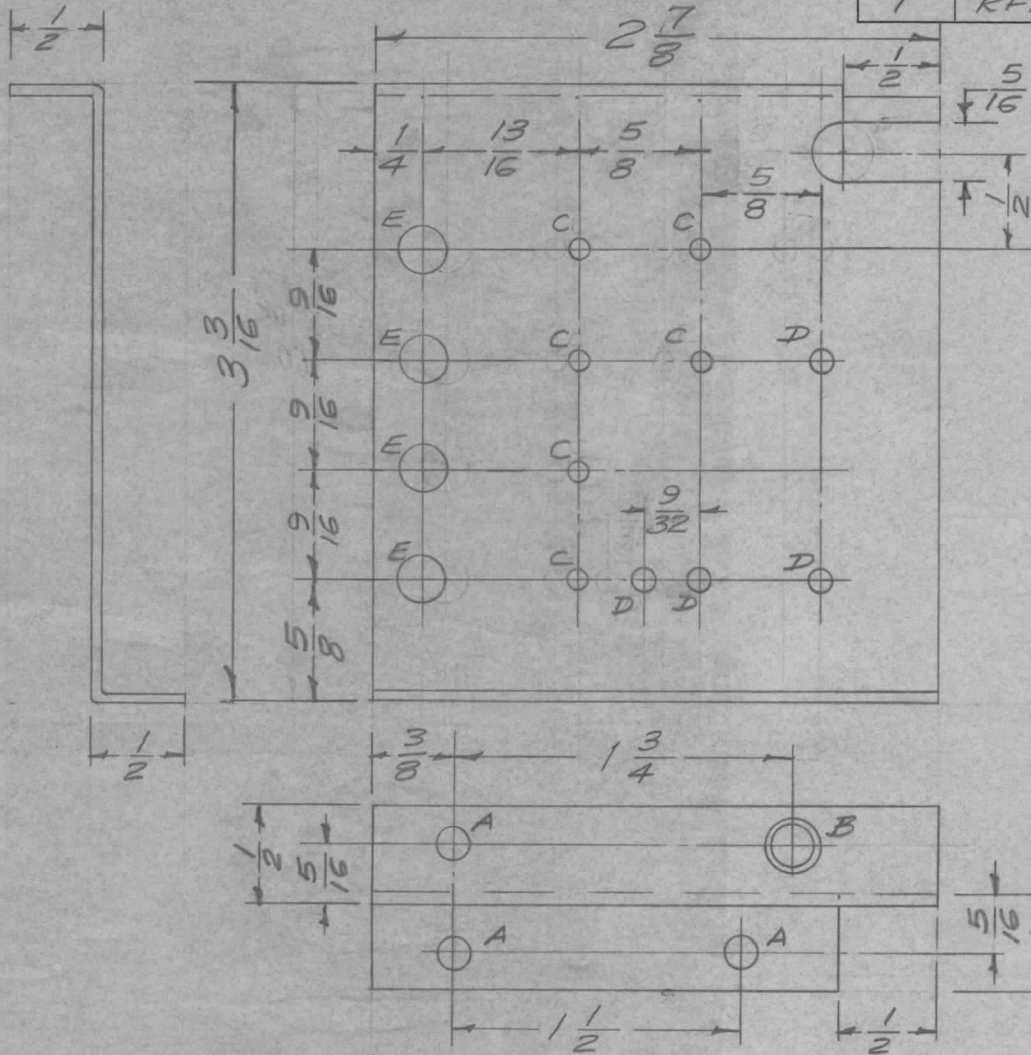
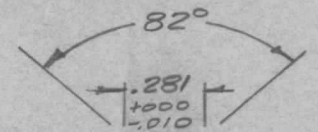


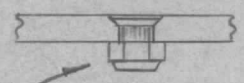
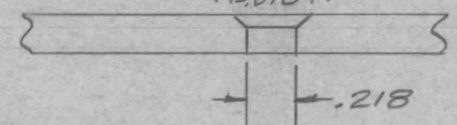
REQ. PER UNIT 1	USED ON			MS-1257	C
	MODEL RFA-1	ASS'Y. NO.	DATE 5-12-58		



A - 1/64 (.171) D. 3 Req.



B - 1 Req.



Mount SM-111-D-206 in "B" Hole as shown

C - 7/64 (.109) D. 6 Req.

D - 1/8 (.125) D. 4 Req.

E - 1/4 (.250) D. 4 Req.

F - 1/16 (.062) D. 4 Req.

Ref-2LD-430

REQ.	ITEM	PART NO.	DESCRIPTION				SYMBOL		
C	1	S-404 WAS S-101	12/15/59	1001	AB	EMN	<b>THE TECHNICAL MATERIEL CORP.</b> MAMARONECK, NEW YORK SHIELD, SIDE, FIL. TRANSFORMER		
B	1	DA 2-7/8 WAS 2-15/16 "D" Hole Moved 3/8 WAS "D" Hole Added 7/16	7/1/58	404	16	Hde			
A	1	"F" Hole Added.	6/6/58	1	16	Hde			
ISSUE	ITEM	CHANGED FROM	DATE	CH. NO.	DRAFTS	CHECKER	ENG. APP.		
TOLERANCES			SCALE: FULL						
DEC. DIM. ±			MAXIMUM ALLOWABLE TOLERANCES HAVE BEEN DETERMINED AND ANY DEVIATIONS WILL BE CAUSE FOR REJECTION. REMOVE ALL BURRS AND SHARP EDGES						
FRAC. DIM. ± 1/64									
ANGULAR DIM. ±									
5052-H32		HEAT TREAT. SPEC.		DRAWN		CHECKED		FINAL APPROVAL	
S-404 YELLOW IRIDITE				RFB		MS-1257		C	
FINISH & SPEC. NO.		ELEC. DES. APP.		MECH. DES. APP.					