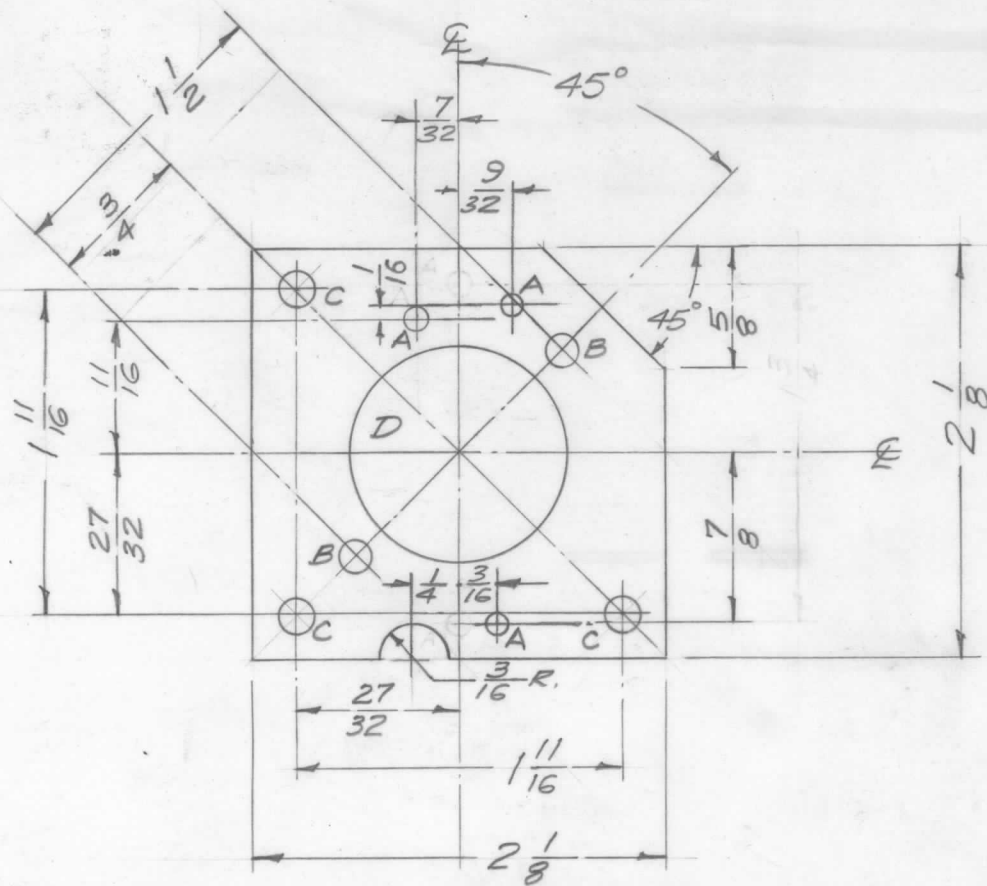


REQ. PER UNIT	USED ON			MS-1253	C
	MODEL	ASS'Y. NO.	DATE		
1	RFA-1		5-6-58		



- A - 1/8 (.125) D. 3 Req.
- B - 1/64 (.171) D. 2 Req.
- C - No. 12 Dr. (.189 D) 3 Req.
- D - 1-1/8 (1.125) D. 1 Req.

Mount TE-108-18 in "C" Holes as shown (Three Req.)

Ref-1 LD-427

ISSUE	ITEM	CHANGED FROM	DATE	CH. NO.	DRAFTS	CHECKER	ENG. APP.	REQ. ITEM	PART NO.	DESCRIPTION	SYMBOL						
C	1	5404 Y-IRIDITE WAS S101-CAUSTIC DIP	12-8 59	1001	P		EMN	.064 THK.		THE TECHNICAL MATERIEL CORP. MAMARONECK, NEW YORK	PLATE, DRIVER TUBE MTG.						
B	1	"A" Hole Added, "A" Hole Moved, 3/8 D. Notch Added	7/1/58	404	16			STOCK SIZE									
A	1	"A" Hole moved (was on G-7/8 from Hor. CL)	5/24/58	1	16			ALUMINUM									
TOLERANCES								MATERIAL									
DEC. DIM. ±			SCALE: FULL					5052-H32		16 5/6/58							
FRAC. DIM. ± 1/64			MAXIMUM ALLOWABLE TOLERANCES HAVE BEEN DETERMINED AND ANY DEVIATIONS WILL BE CAUSE FOR REJECTION. REMOVE ALL BURRS AND SHARP EDGES					TYPE & TEMPER		HEAT TREAT. SPEC.		DRAWN		CHECKED		FINAL APPROVAL	
ANGULAR DIM. ±								S404-Y2-IRIDITE								RFB	
								FINISH & SPEC. NO.		ELEC. DES. APP.		MECH. DES. APP.					