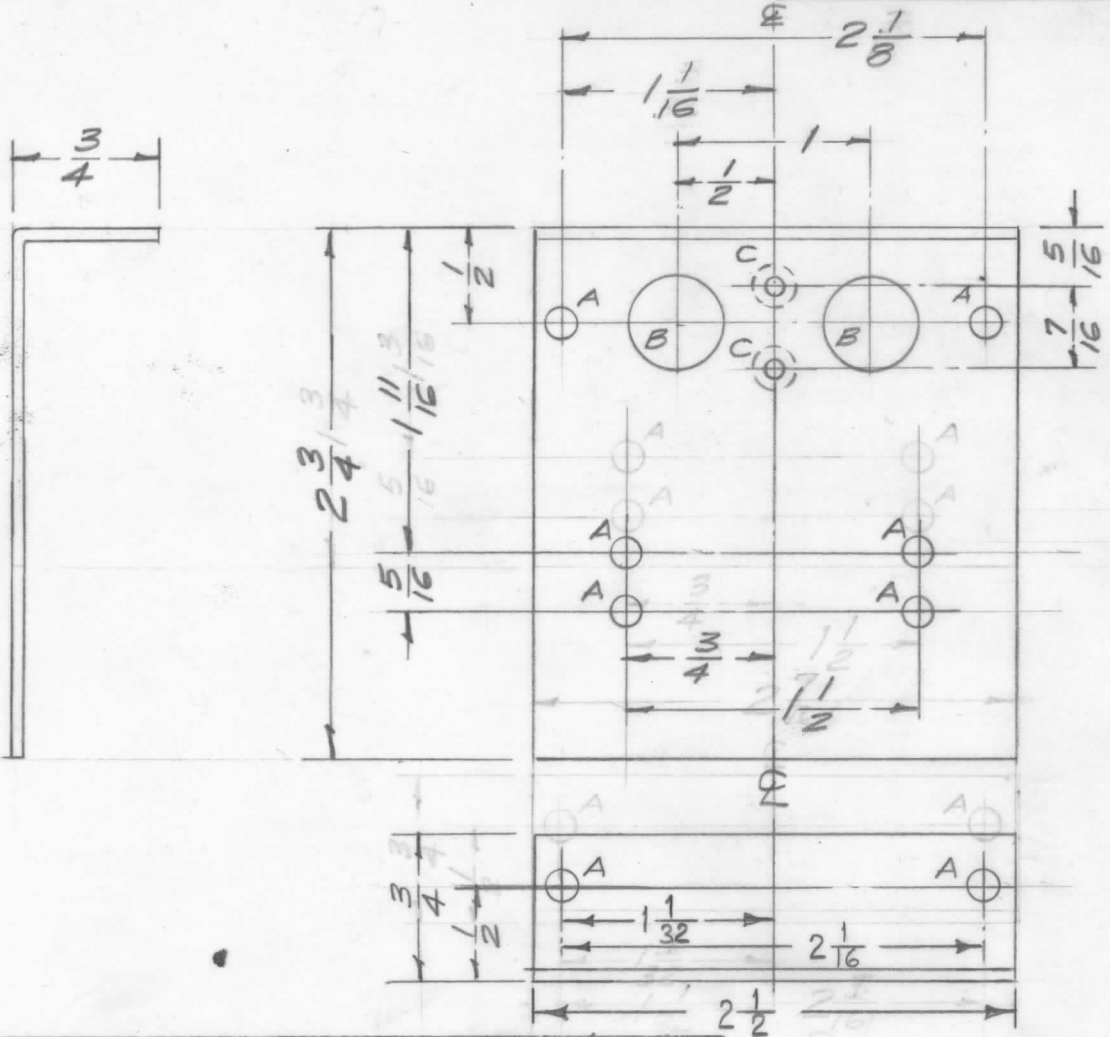


REQ. PER UNIT	USED ON			MS-1246	E
	MODEL	ASS'Y. NO.	DATE		
1	RFA-1		5-13-58		



A- 1/4 (.171) D. .8 Req.
 B- 1/2 (.500) D. 2 Req.
 C- Drill & C'sink for 3-48 FHS 2 Req.

Ref: 1 LD-425

E	1	0/A DIM. 2 1/2 ADDED	2-7-61	4082	RAF	90%	RK
D	1	S404-YEL-IRIDITE 5/01-CAUSTIC DIP	12-8	1001			EMN
C	1	2-3/4 OA WAS 1-3/4 1-11/16 WAS 1-3/16 "C" HOLES ADDED	7/1/58	404	16		
B	1	2 1/16 WAS 2 3/16 2 1/8 WAS 2 3/16	6/4/58	2	16		
A	1	2 7/16 (OA) WAS 2-1/2	5/16/58	1	16		
ISSUE	ITEM	CHANGED FROM	DATE	CH. NO.	DRAFTS	CHECKER	ENG. APP.
TOLERANCES			SCALE: $\frac{1}{4}$				
DEC. DIM. \pm			MAXIMUM ALLOWABLE TOLERANCES HAVE BEEN DETERMINED AND ANY DEVIATIONS WILL BE CAUSE FOR REJECTION. REMOVE ALL BURRS AND SHARP EDGES				
FRAC. DIM. \pm 1/64							
ANGULAR DIM. \pm							

REQ. ITEM	PART NO.	DESCRIPTION	SYMBOL
		.064 THK.	
		STOCK SIZE	
		ALUMINUM	
		MATERIAL	
5052-H32	—H—	16 5/13/58	
TYPE & TEMPER	HEAT TREAT. SPEC.	DRAWN	CHECKED
S404 YEL. IRIDITE		RFB	
FINISH & SPEC. NO.	ELEC. DES. APP.	MECH. DES. APP.	
			MS-1246 E

THE TECHNICAL MATERIEL CORP.
 MAMARONECK, NEW YORK
 BRACKET, TERMINAL STRIP
 MOUNTING