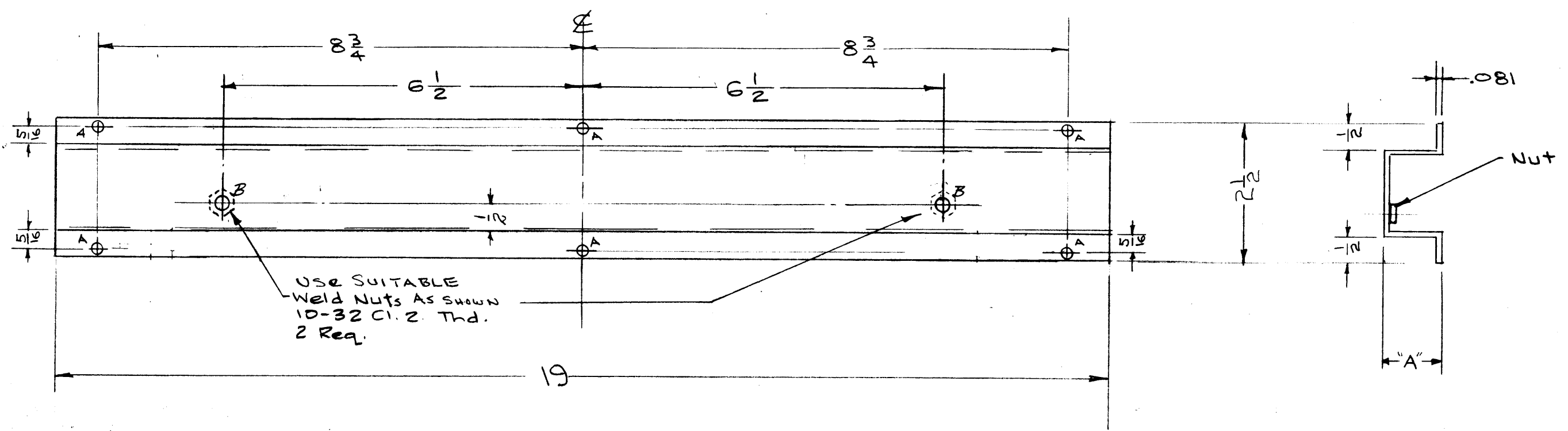


MS-1215-1 E



T.M.C. PART NO.	DIMENSION A	USED ON MODEL	QUAN.
MS-1215-1	1 1/32	RAK-4 CY-2416/U	1
MS-1215-2	7/8	RAK-4A	1

HOLE LEGEND  
 A = 13/64 DIA. 6 HOLES  
 B = 1/4 DIA. 2 HOLES

NOTICE TO PERSONS RECEIVING THIS DRAWING

THE TECHNICAL MATERIEL CORPORATION claims proprietary right in the material disclosed hereon. This drawing is issued in confidence for engineering information only and may not be reproduced or used to manufacture anything shown hereon without permission from THE TECHNICAL MATERIEL CORPORATION to the user. This drawing is loaned for mutual assistance and is subject to recall at any time.

Property of:  
 THE TECHNICAL MATERIEL CORPORATION  
 MAMARONECK, NEW YORK

FINISH:  
 S-371 DEGREASING, STEEL  
 S-114 ZINC CHROMATE PRIMER  
 S-115 SMOOTH GRAY ENAMEL

ISSUE	ITEM	CHANGED FROM	DATE	CH. NO.	DRAFTS	CHECKER	ENG. APP.
E	2	ON FINISH (S-404 DELETED) S-371 ADD.	1.28.65	13376	AKB	AKB	AKB
D	1	CHART ADDED MS-1215-1 WAS MS-1215	5/11/60	2248	AKB	AKB	AKB
C	1	S-404 WAS S-101	12/14/59	1001	AKB	AKB	EMN
B	1	MATL. WAS .081 ALUM. "B" HOLE WAS SLOT - NUTS ADDED	9/2/58	440	AKB	AKB	AKB
A	1	TWO "A" HOLES DELETED	6/24/57	1	AKB	AKB	AKB

TOLERANCES		SCALE:
DEC. DIM. ±		MAXIMUM ALLOWABLE TOLERANCES HAVE BEEN DETERMINED AND ANY DEVIATIONS WILL BE CAUSE FOR REJECTION. REMOVE ALL BURRS AND SHARP ED ES
FRAC. DIM. ±	1/64	
ANGULAR DIM. ±		

REQ. PER UNIT	MODEL	PROJECT NO.	ASS'Y. NO.	DATE
See Chart	RAK-4A RAK-4		A-1524	5-11-60

REQ. ITEM	PART NO.	DESCRIPTION	SYMBOL
12 GA.		THE TECHNICAL MATERIEL CORP. MAMARONECK, NEW YORK	
STOCK SIZE		CHASSIS SUPPORT	
MATERIAL			
TYPE & TEMPER			
HEAT TREAT. SPEC.			
FINI H & SPEC. NO.			
ELEC. DES. APP.			
MECH. DES. APP.			