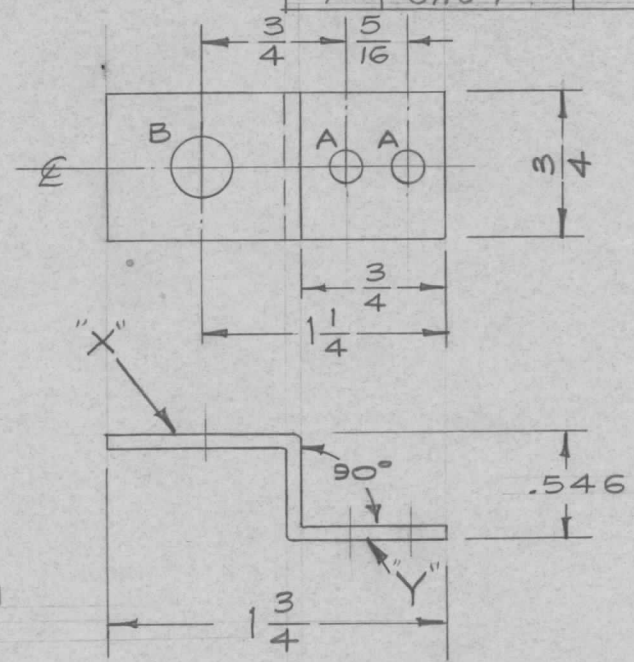


REQ. PER UNIT	USED ON		
	MODEL	ASS'Y. NO.	DATE
1	SBE-2	A-1517	3-17-58
1	SBE-3	AP-100	11-30-58
1	CHG-1		5-10-60

MS-1210 A



Note - Surface "X" will be parallel with surface "Y" within .005

- A -  $\frac{11}{64}$  (.171) Diam. 2 Req.
- B -  $\frac{5}{16}$  (.312) Diam. 1 Req.

ISSUE	ITEM	CHANGED FROM	DATE	CH. NO.	DRAFTS	CHECKER	ENG. APP.	REQ. ITEM	PART NO.	DESCRIPTION	SYMBOL	
										THE TECHNICAL MATERIEL CORP. MAMARONECK, NEW YORK	A	
										BRACKET, GEAR MTG.		
A	1	5404- IRIDITE WAS S101 CAUSTIC DIP	12-8 59	1001	P		EMV			(REF: (A-1456))		
TOLERANCES								SCALE: FULL				
DEC. DIM. $\pm .001$								MAXIMUM ALLOWABLE TOLERANCES HAVE BEEN DETERMINED AND ANY DEVIATIONS WILL BE CAUSE FOR REJECTION.				
FRAC. DIM. $\pm 1/64$								REMOVE ALL BURRS AND SHARP EDGES				
ANGULAR DIM. $\pm 1^\circ$												
								5052-H32	16 <sup>3/17/58</sup>			
								S404-IRIDITE				
								FINISH & SPEC. NO.	ELEC. DES. APP.	MECH. DES. APP.	MS-1210	A