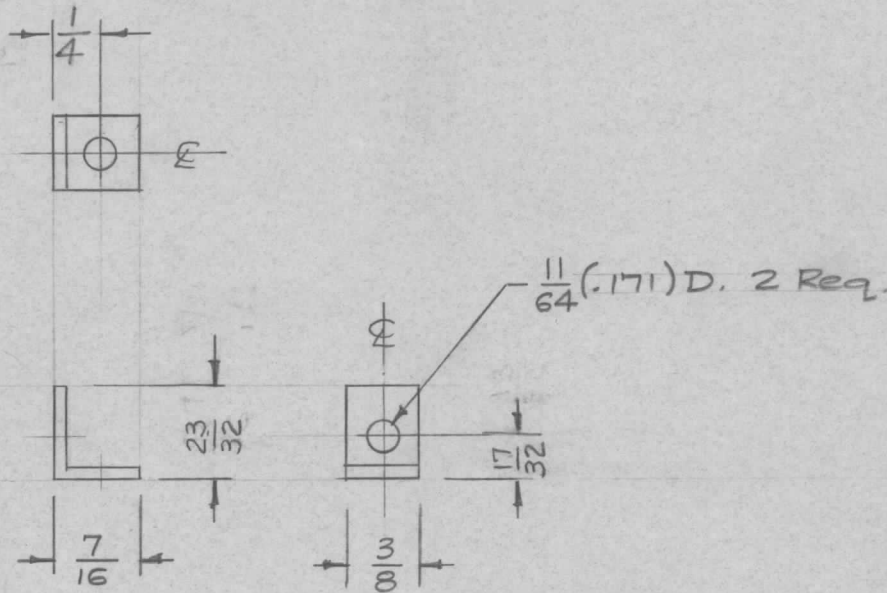


REQ. PER UNIT	USED ON			MS-1207	C
	MODEL	ASS'Y. NO.	DATE		
1	SBE-1#2	A 1514	3-17-58		



ISSUE	ITEM	CHANGED FROM	DATE	CH. NO.	DRAFTS	CHECKER	ENG. APP.	REQ. ITEM	PART NO.	DESCRIPTION	SYMBOL		
C	1	$\frac{23}{32}$ WAS $\frac{9}{16}$ & $\frac{17}{32}$ WAS $\frac{13}{32}$	11/10/63	10492	<i>PH</i>	<i>HDE</i>	<i>WJTS</i>	.064 THK.		THE TECHNICAL MATERIEL CORP. MAMARONECK, NEW YORK			
B	1	5404-IRIDITE WAS SIDE CAUSTIC DIP	12-8-59	1001	<i>P</i>		<i>EMN</i>	STOCK SIZE		BRACKET, RELAY			
A	1	516 WAS $\frac{1}{2}$ $\frac{13}{32}$ WAS $\frac{11}{32}$	9/21/59		<i>PH</i>	<i>HDE</i>	<i>AND</i>	ALUMINUM		RETAINING			
TOLERANCES								5052-H 32		16 <sup>3</sup> /17/58	<i>WJTS</i>	<i>AND</i>	
SCALE: FULL								TYPE & TEMPER		HEAT TREAT. SPEC.	DRAWN	CHECKED	FINAL APPROVAL
DEC. DIM. $\pm$ FRAC. DIM. $\pm$ 1/64 ANGULAR DIM. $\pm$								S404-IRIDITE			<i>WJTS</i>		MS-1207 C
MAXIMUM ALLOWABLE TOLERANCES HAVE BEEN DETERMINED AND ANY DEVIATIONS WILL BE CAUSE FOR REJECTION. REMOVE ALL BURRS AND SHARP EDGES								FINISH & SPEC. NO.		ELEC. DES. APP.	MECH. DES. APP.		