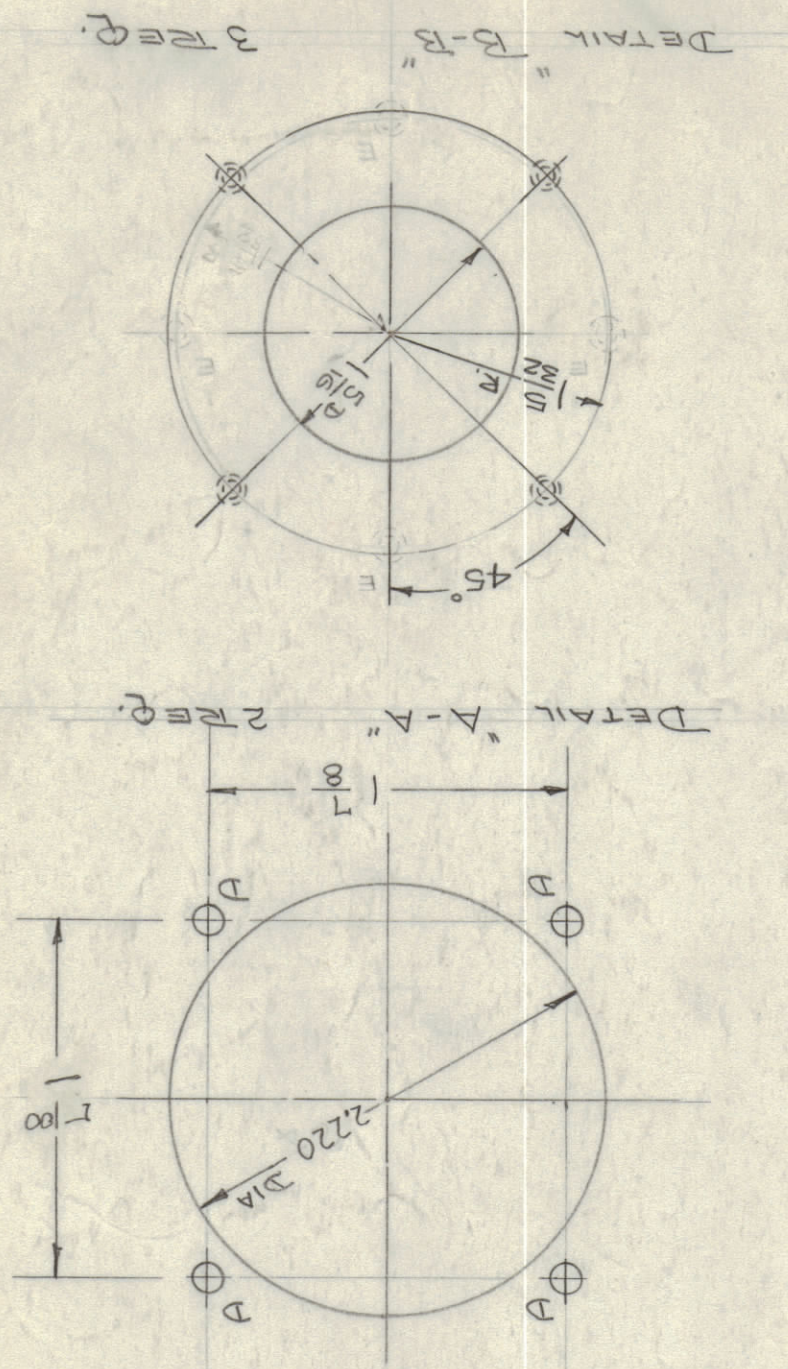
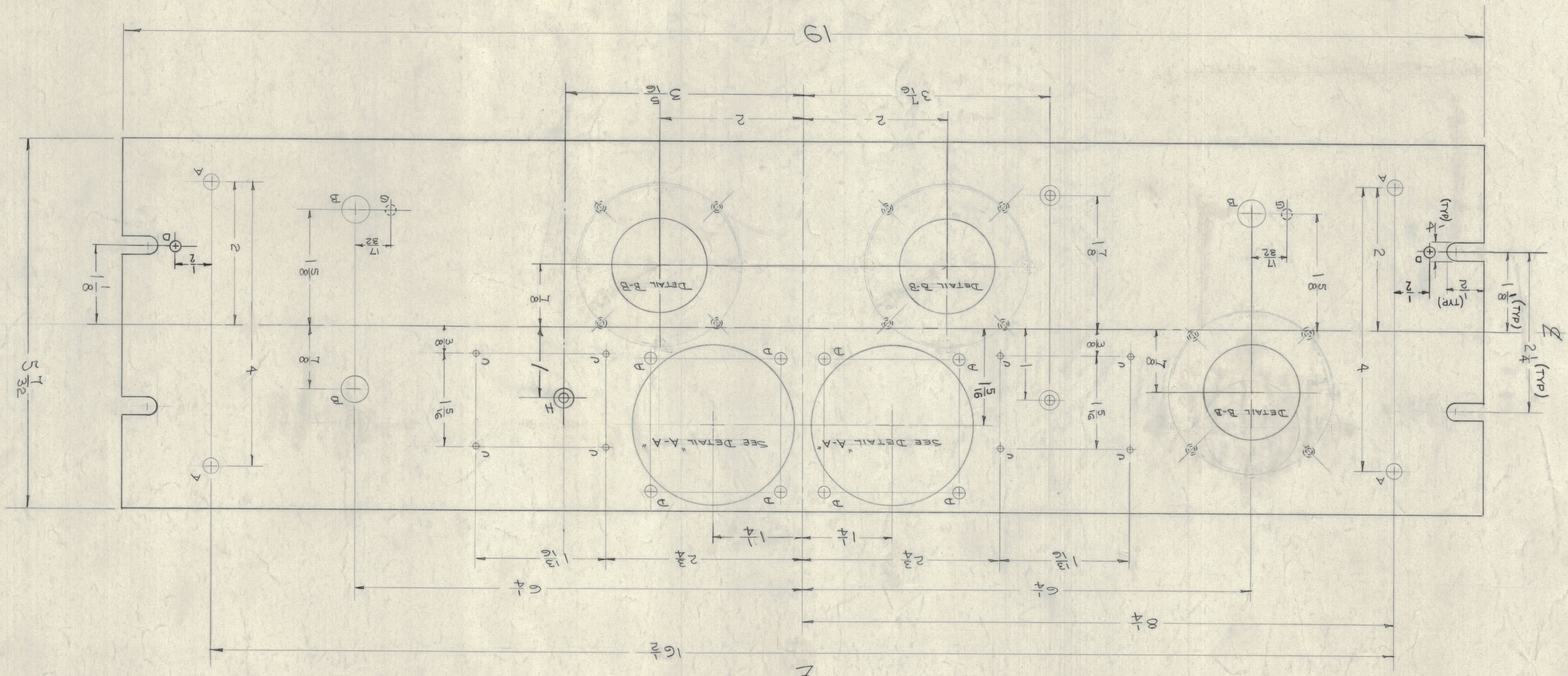


ALL OTHERS	DEC. DIM. ±	ANGULAR DIM. ±	TOLERANCES ARE NOT INCLUDED.		
F	2.16-65	13483	0.001	0.001	0.001
E	2.14-61	4126	0.001	0.001	0.001
D	1.5-64	1001	0.001	0.001	0.001
C	0.001	0.001	0.001	0.001	0.001
B	0.001	0.001	0.001	0.001	0.001
A	0.001	0.001	0.001	0.001	0.001

REQ. ITEM	PART NO.	DESCRIPTION	SYMBOL
1	3/16 THICK	THE TECHNICAL MATERIEL CORP.	
		MAMARONECK NEW YORK	
		ALUMINUM	
		STOCK SIZE	
		MACHINING, FRONT PANEL	
		TYPE & TEMPER	
		2024-T3	
		HEAT TREAT SPEC.	
		SEE NOTE	
		FINISH & SPEC. NO.	

- NOTES
- Lateral Bow of Panel must be kept to .031 TOL.
 - Holes must be drilled.
 - MILL ALL EDGES.
 - ALL THREADED HOLES & HOLE DIA. MUST BE HELD AFTER FINISHING.
- FINISH
- 9-404 YELLOW IRIDITE
 - 9-114 ZINC CHROMATE PRIMER
 - 9-115 SMOOTH GRAY ENAMEL



- HOLE LEGEND
- A = 13/64 DIA 4 HOLES
 - B = 25/64 DIA 3 "
 - C = #47 DRILL 8 "
 - D = 5/32 DIA 10 "
 - E = DRILL & TAP FOR G-32 1/8 DEEP FROM REAR 12 "
 - F = DRILL & CHAM FOR G-32 FHS 2 "
 - G = 3/4 DIA X 1/8 DR. FROM REAR 2 "
 - H = DRILL & CHAM FOR B-32 FHS 1 "

THE PURCHASER PROPRIETY
 MINOR ALIQUANT TOLERANCES HAVE BEEN OBTAIN
 REMOVE ALL BURRS AND SHARP EDGES

NOTICE TO PERSONS RECEIVING THIS DRAWING

THE TECHNICAL MATERIEL CORPORATION'S
 PROPERTY RIGHT IN THE MATERIAL DISCLOSED HEREON.
 This drawing is issued in confidence for engineering
 information only and may not be re-produced or otherwise
 to manufacture and may not be used for any other purpose
 without the written consent of THE TECHNICAL MATERIEL CORPORATION
 or its user. This drawing is loaned for mutual
 assistance and is subject to recall at any time.

Property of:
 THE TECHNICAL MATERIEL CORPORATION
 MAMARONECK, NEW YORK

MS-1201 F