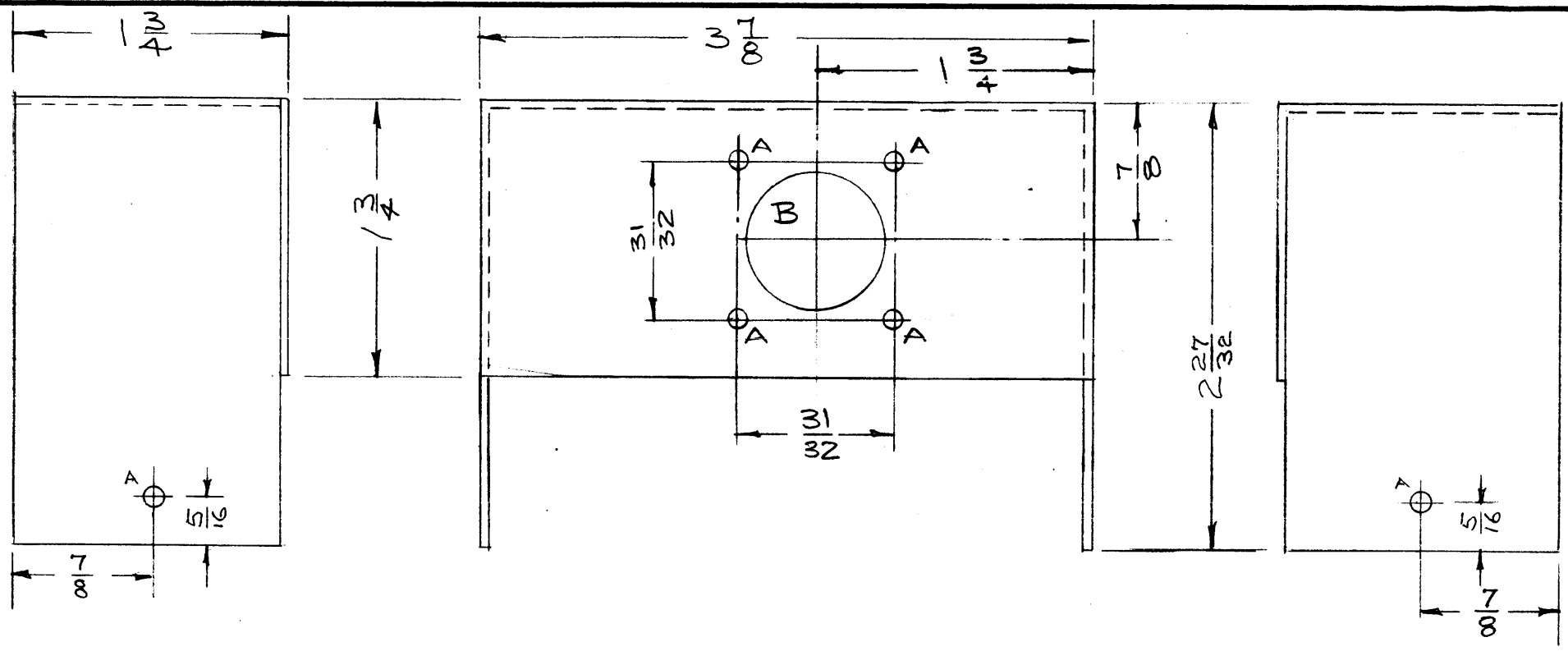


MS-1200 B



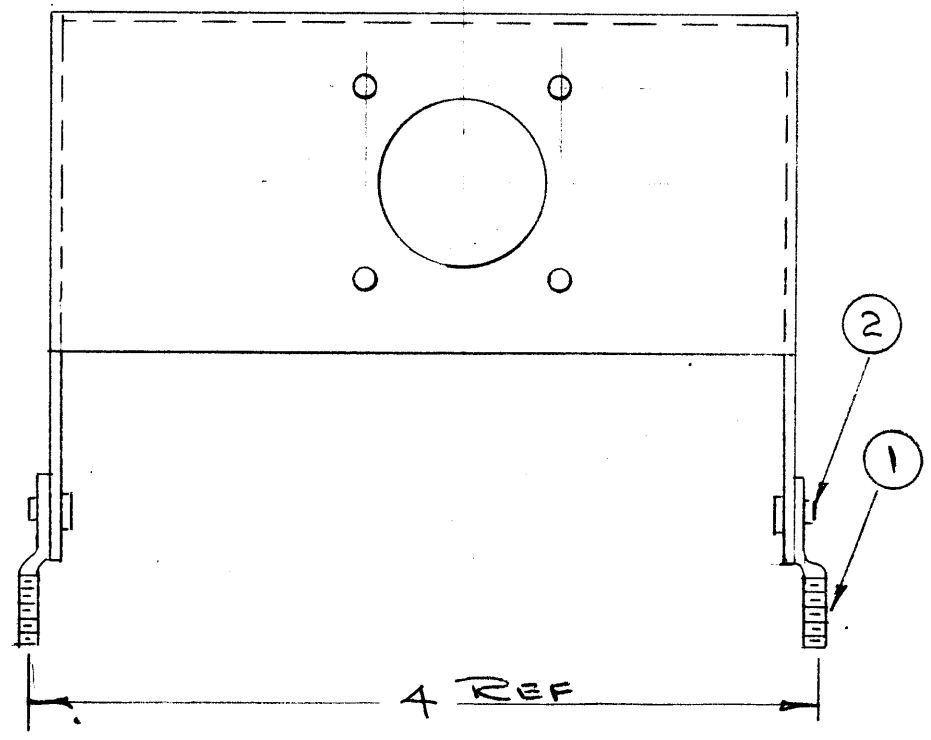
STAGE 1 METAL STAMPING
 A = 1/8 DIA. 6 HOLES REQ.
 B = 1" DIA. 1 HOLE REQ.

NOTICE TO PERSONS RECEIVING THIS DRAWING

THE TECHNICAL MATERIEL CORPORATION claims proprietary right in the material disclosed hereon. This drawing is issued in confidence for engineering information only and may not be reproduced or used to manufacture anything shown hereon without permission from THE TECHNICAL MATERIEL CORPORATION to the user. This drawing is loaned for mutual assistance and is subject to recall at any time.

Property of:
 THE TECHNICAL MATERIEL CORPORATION
 MAMARONECK, NEW YORK

FINISH:
 S-404 YELLOW IRIDITE



STAGE 2 SPADE LUG ASSEMBLY

REF: LD-383(2) STAMPING

ISSUE	ITEM	CHANGED FROM	DATE	CH. NO.	DRAFTS	CHECKER	ENG. APP.
B	1	S-404 WAS S-101	12/14/59	1001	AK		EMN
A	1	"B" Hole was 7/8"	3/28/58	1	AK	VB	AK

TOLERANCES		SCALE:
DEC. DIM. ±		MAXIMUM ALLOWABLE TOLERANCES HAVE BEEN DETERMINED AND ANY DEVIATIONS WILL BE CAUSE FOR REJECTION. REMOVE ALL BURRS AND SHARP EDGES
FRAC. DIM. ±		
ANGULAR DIM. ±		

REQ. PER UNIT	MODEL	PROJECT NO.	ASS'Y. NO.	DATE
1	A-1279-1			3-3-58

REQ. ITEM	PART NO.	DESCRIPTION	SYMBOL
2	2	EY-100-2	EYELET, FLAT FLANGE
2	1	SC-107-1	SPADE LUG
.051		STOCK SIZE	
ALUMINUM		MATERIAL	
5052-H32		TYPE & TEMPER	
SEE NOTE		HEAT TREAT. SPEC.	
FINISH & SPEC. NO.		DRAWN	
		CHECKED	
		FINAL APPROVAL	
		ELEC. DES. APP.	
		MECH. DES. APP.	

THE TECHNICAL MATERIEL CORP.
 MAMARONECK, NEW YORK
 COVER,
 CONNECTOR CHASSIS

MS-1200 B