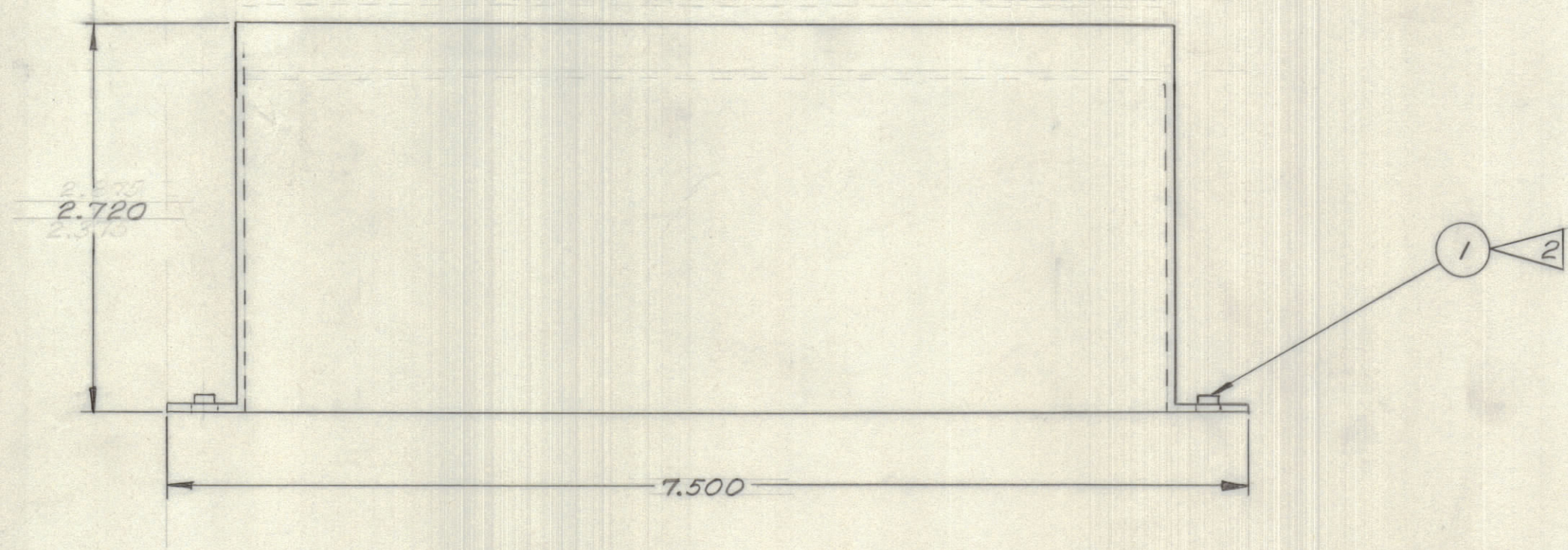
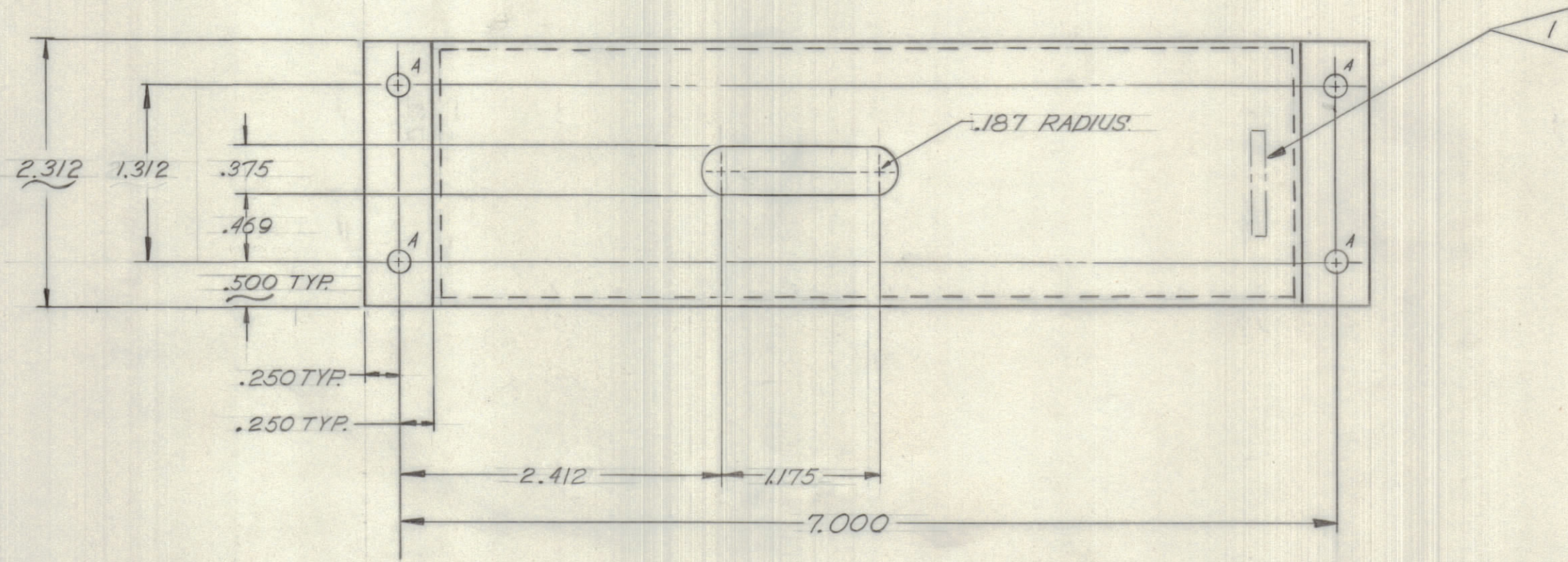


IF IT IS FOUND DESIRABLE TO CHANGE ANY TOLERANCE OR OTHER DETAIL SPECIFIED ON THIS DRAWING NOTIFY THE PURCHASER PROMPTLY.		DIMENSIONS IN INCHES UNLESS OTHERWISE SPECIFIED					
MAXIMUM ALLOWABLE TOLERANCES HAVE BEEN DETERMINED AND DEVIATIONS WILL BE CAUSE FOR REJECTION. REMOVE ALL BURRS AND SHARP EDGES.							
ISSUE	ITEM	CHANGED FROM	DATE	CN. NO.	DRAFTS	CHECKER	ENG. APP.
X		ENG RELEASE	19 AUG 72			C.C.	H.C.S.

REQ	ITEM	PART NO.	DESCRIPTION	USED ON	REMARKS
4	1	NT10002-1	MINIATURE FASTENER	AX10085	



MS11450 X

HOLE	DESCRIPTION	QTY
A	.171 DIA.	4

2. INSTALL AFTER FINISHING
 1. METAL STAMP TMC PART NO 1/8
 HIGH GOTHIC IN APPROX POSITION SHOWN
 NOTES:

TOLERANCES		SCALE: 1/1
ALL OTHERS	DEC. DIM. ± .05 FRAC. DIM. ± 1/64 ANGULAR DIM. ± 0° 30'	DRILL, PUNCH, COMMERCIAL STOCK SIZES AND MANUFACTURERS TOLERANCES ARE NOT INCLUDED.

AX 10084			14 AUG 72
MODEL	PROJECT NO.	ASSY. NO.	DATE

.064 THK		TMC (Canada) LIMITED	
STOCK SIZE		OTTAWA ONTARIO	
AL ALY		SWITCH BOX COVER	
MATERIAL	WEIGHT PER PC.		
TYPE & TEMPER		C. CHARLES	HCSCHAFER
		DRAWN	ELEC. DES. APP. MECH. DES. APP.
HEAT TREAT. SPEC.		CHECKED	FINAL APPROVAL
S404 IRIDITE			
FINISH & SPEC. NO.			

MS11450 X