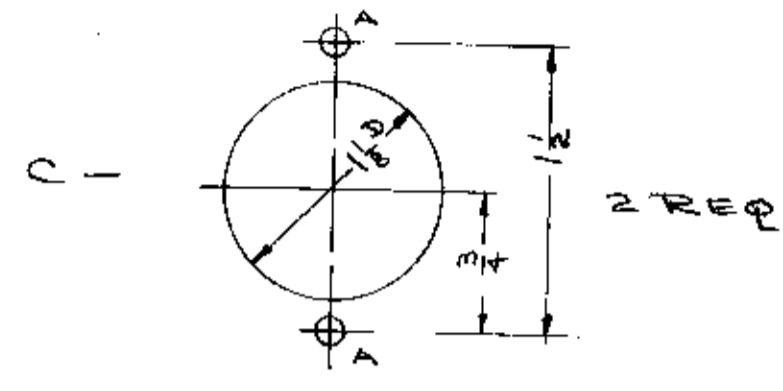
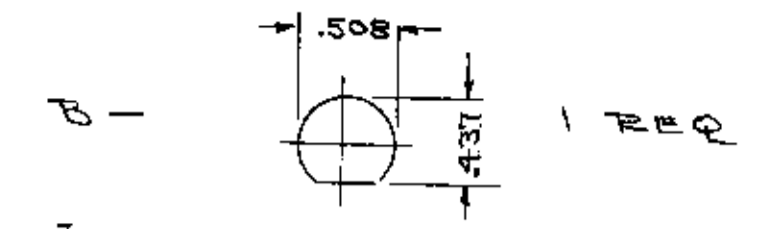
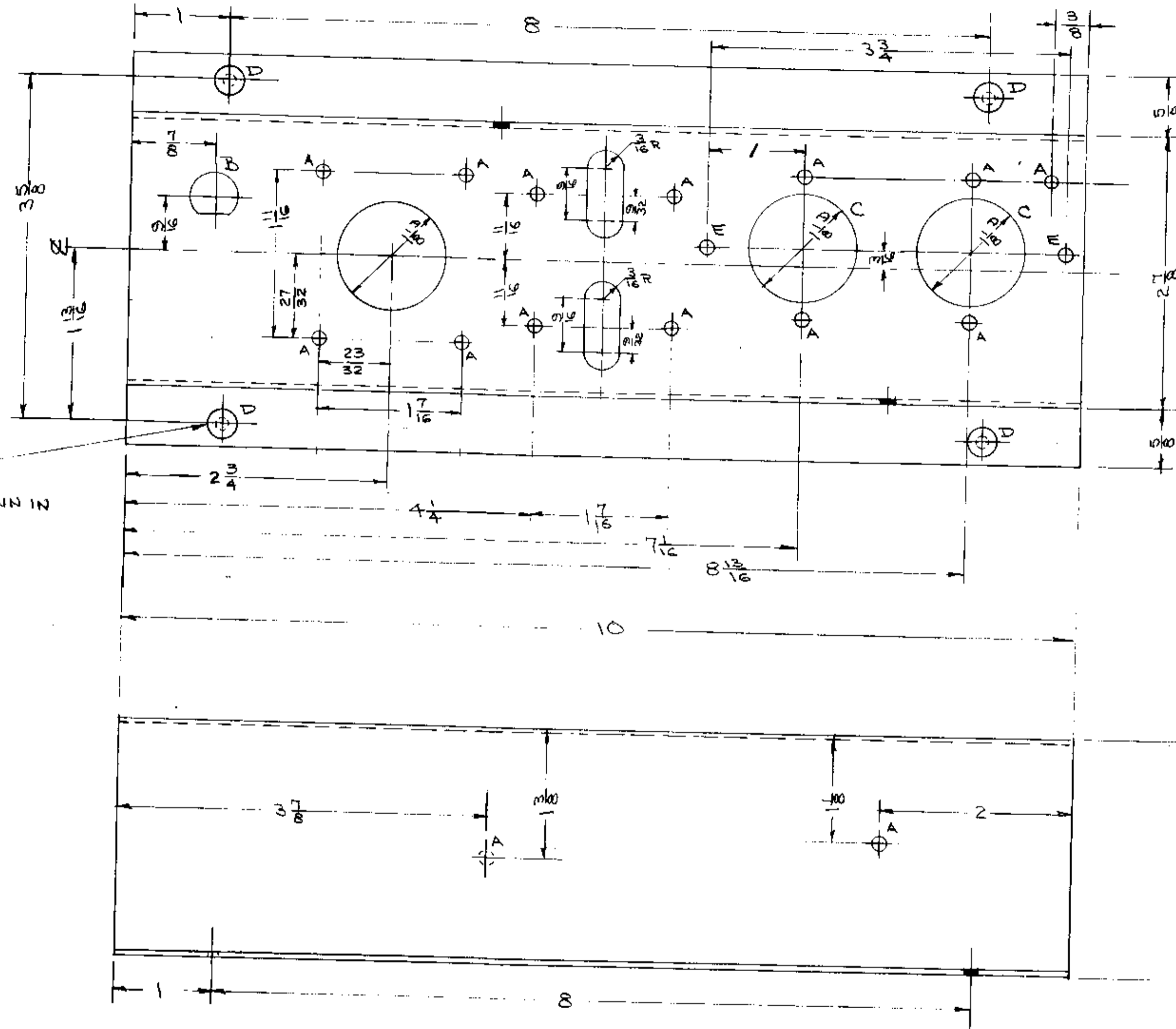


IF IT IS FOUND DESIRABLE TO CHANGE ANY TOLERANCE OR OTHER DETAIL SPECIFIED ON THIS DRAWING NOTIFY THE PURCHASER PROMPTLY.
 MAXIMUM ALLOWABLE TOLERANCES HAVE BEEN DETERMINED AND DEVIATIONS WILL BE CAUSE FOR REJECTION. REMOVE ALL BURRS AND SHARP EDGES

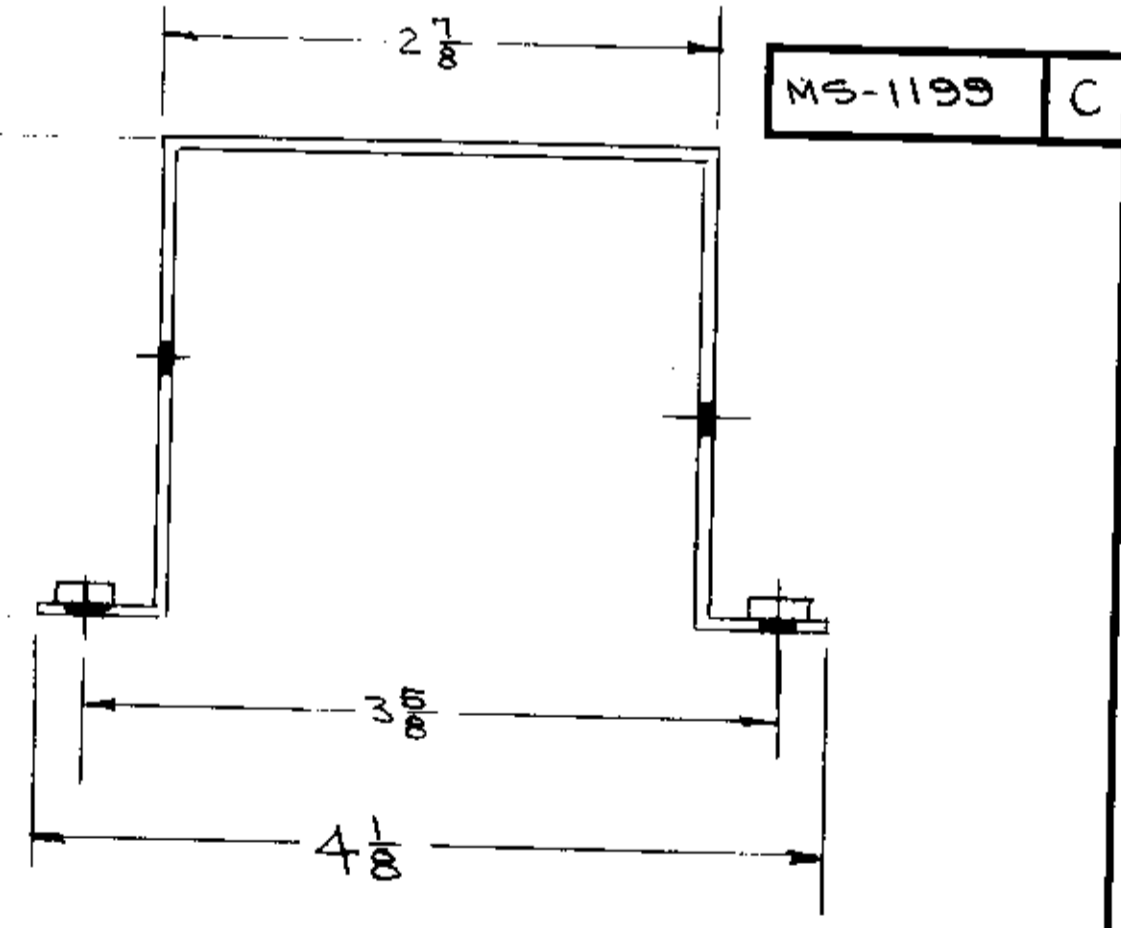
A = 9/64 D 15 HOLES



D - .191-.194 DIA 4 REQ

E - 11/64 D. 2 HOLES

① MOUNT AS SHOWN IN ALL 'D' HOLES



NOTICE TO PERSONS RECEIVING THIS DRAWING
 THE TECHNICAL MATERIEL CORPORATION claims proprietary right in the material disclosed hereon. This drawing is issued in confidence for engineering information only and may not be reproduced or used to manufacture anything shown hereon without permission from THE TECHNICAL MATERIEL CORPORATION to the user. This drawing is loaned for mutual assistance and is subject to recall at any time.

Property of:
 THE TECHNICAL MATERIEL CORPORATION
 MAMARONECK, NEW YORK

REV. ITEM	CHANGED FROM	DATE	EN. NO.	DRAFTS	CHECKER	ENG. APP.
C 1	DWG UPDATED	10/17/55	10175	EMH	EMH	EMH
B 1	5404-1RIBITE WKS S19-CAUSTIC DIP	12-9-55	1001	J	J	EMH
A 1	17116 WAS 1 1/2 (REF. 1-1/16 WAS 1-3/4 (TF-179))	1/14/55	1	16	J	EMH

Ref-LD-384 (4) Stamping

4	1	NT-129-632-4	NUT, SWAGE	
REQ. ITEM	PART NO.	DESCRIPTION	SYMBOL	
.064		THE TECHNICAL MATERIEL CORP. MAMARONECK, NEW YORK		
Aluminum		CHASSIS, BATTERY		
5052-H32		SUPPLY		
10/27/55	16 3/27/55	DRAWN	CHK. DES. APP.	SECH. DES. APP.
5404-1EL-1RIBITE		CHECKED	FINAL APPROVAL	
			MS-1199 C	

1	A-1504	PROJECT NO.	2-27-55	DATE
REQ PER UNIT	MODEL	ASSY. NO.	USED ON	