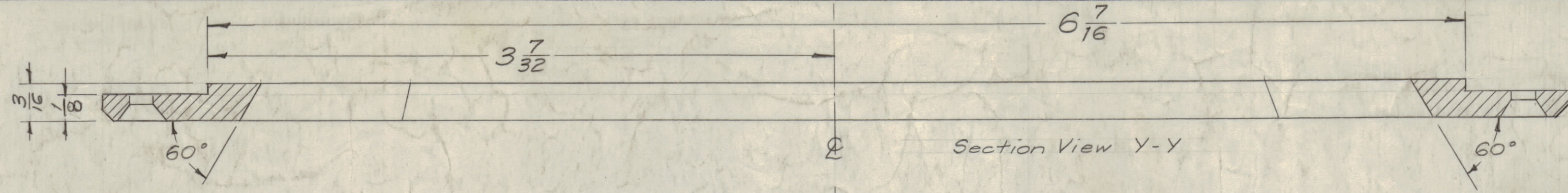
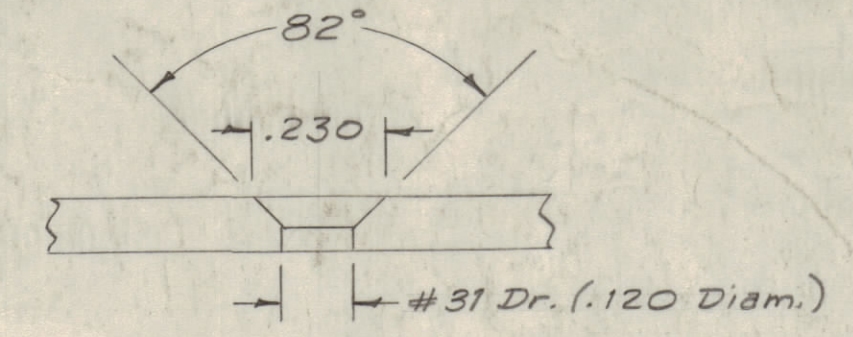


IF IT IS FOUND DESIRABLE TO CHANGE ANY TOLERANCE OR OTHER DETAIL SPECIFIED ON THIS DRAWING NOTIFY THE PURCHASER PROMPTLY.  
 MAXIMUM ALLOWABLE TOLERANCES HAVE BEEN DETERMINED AND DEVIATIONS WILL BE CAUSE FOR REJECTION. REMOVE ALL BURRS AND SHARP EDGES

PROPERTY OF:  
 THE TECHNICAL MATERIEL CORPORATION  
 MAMARONECK, NEW YORK



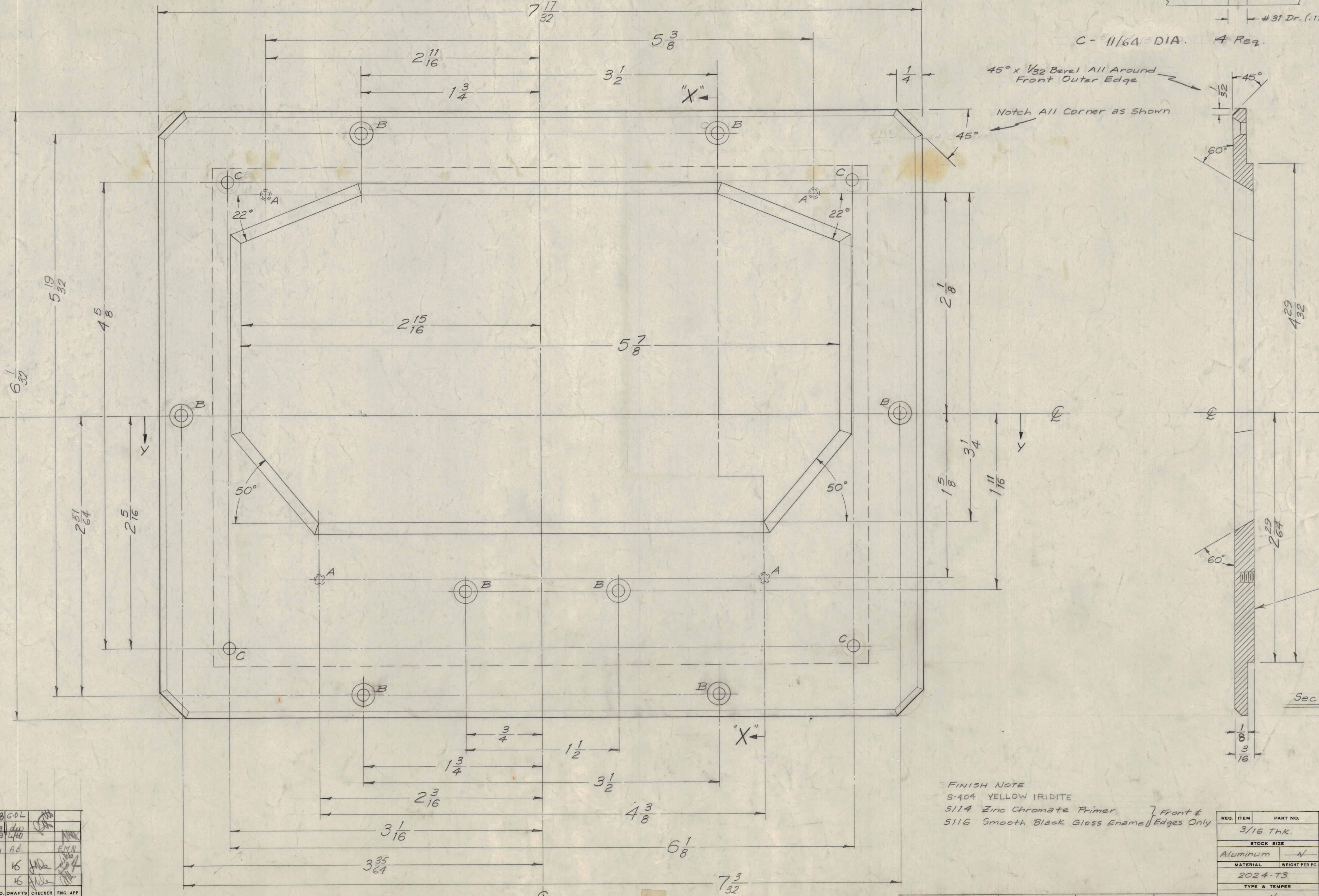
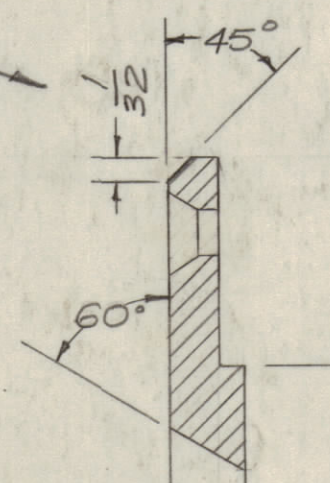
A - Blind Drill & Tap 2-56 NC, Class 1 - 1/8 Deep from Rear. 4 Req.  
 B - Drill & C'sink for 4-40 FHS. (See Detail) 8 Req.



C - 11/64 DIA. 4 Req.

45° x 1/32 Borel All Around Front Outer Edge

Notch All Corner as Shown



MARK TMC PART NO. 1/8 HIGH GOTHIC, W/LATEST REVISION LETTER ON REAR.

Section View X-X

FINISH NOTE  
 S-404 YELLOW IRIDITE  
 S-114 Zinc Chromate Primer } Front &  
 S-116 Smooth Black Gloss Enamel } Edges Only

F	1/2" HOLE WAS 5/32 DIA	7-17-57	ZM88	GOL	
E	DIM 1/16 CHANGED TO 1/8	7-18-57	21713	du	
D	DIM REV. ADD TMC PT. NO	2-13-58	17803	440	
C	S-404 YEL IRIDITE WAS	12/16/59	1001	AB	EXN
B	S-101 CAUSTIC DID	3/11/58	2	16	
A	6 OUTSIDE 'B' HOLES WERE 'C' HOLES	3/25/58	1	16	
	1 'A' HOLE WAS 2-48 TAP				
	NO. 1-2-56				
	ALL 60° ANGLES WERE 50°				
	(ERROR)				

ISSUE	ITEM	CHANGED FROM	DATE	CN. NO.	DRAFTS	CHECKER	ENG. APP.
TOLERANCES		SCALE:					
ALL	OTHERS	DEC. DIM. ± 1/64	FRAC. DIM. ± 1/64				
		DRILL PUNCH, COMMERCIAL STOCK SIZES AND MANUFACTURERS TOLERANCES ARE NOT INCLUDED.					

1	MR-113	SWR-3000		5-21-58
1	MR-112	ATS-MCU-2A		2-12-58
REQ PER UNIT	MODEL	PROJECT NO.	ASSY. NO.	DATE
USED ON				

REQ. ITEM	PART NO.	DESCRIPTION	SYMBOL
	3/16 THK.	THE TECHNICAL MATERIEL CORP. MAMARONECK, NEW YORK	
	Aluminum	PLATE, FRONT, METER	
	2024-T3		
	TYPE & TEMPER	62-12-58	
	HEAT TREAT SPEC.		
	FINISH & SPEC. NO.		

MS 1191 F